

New capacity for Statewide Programs enabled by 2015 Legislature

The Statewide Programs have expanded service to Oregon's urban communities with the addition of these new positions and initiatives



Chris Curtin
Oregon-wide
Fermentation science
research & development



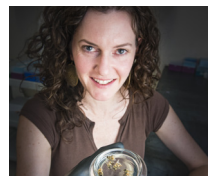
Nadia Streletskaia
Oregon-wide
Consumer food
preferences



Andony Melathopoulos
Oregon-wide
Honey-bee and pollinator
health



Jared Jorgensen
Oregon-wide
Field diagnostics to
support honey-bee and
pollinator health



Hannah Lucas
Oregon-wide
Lab diagnostics to support
honey-bee and pollinator
health



Len Coop
Oregon-wide
Decision support tools
for sustainable pest
management



Mary Halbleib
Oregon-wide
Decision support tools
for sustainable pest
management



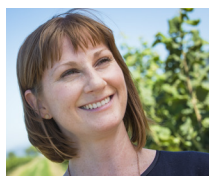
Rory McDonnell
Oregon-wide
Sustainable management
of invertebrate crop pests



Lauren Gwin
Oregon-wide
Small-scale farming and
community food systems



Francesca Belart
Oregon-wide
Sustainable timber
harvest



Katie Gaebel
Oregon-wide
Promoting college and
career opportunities



Jonathan Dinkins
Oregon-wide
Rangeland ecology and
sage-grouse conservation



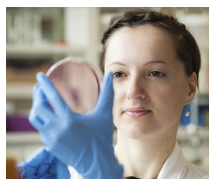
Maziar Kandelous
Oregon-wide
Ag water quality,
stormwater, nutrient
management



Si Hong Park
Oregon-wide
Food safety biology



Gerrad Jones
Oregon-wide
Water engineering and
management

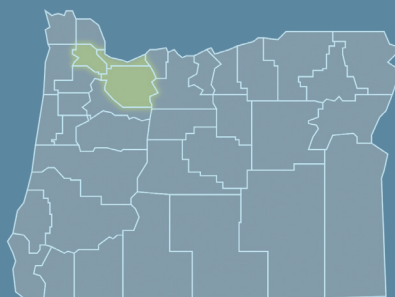


Jovana Kovacevic
Portland
Food safety

Marcelo Moretti
Oregon-wide
Sustainable weed
management

Oregon's urban communities

More local programs focused on healthy living and nutrition education; expanded support for small-scale farming and community food systems; and increased research and development in fermentation sciences and food safety.



Oregon State
UNIVERSITY