



## Shop Tool Rack & Shelf

### Materials Needed:

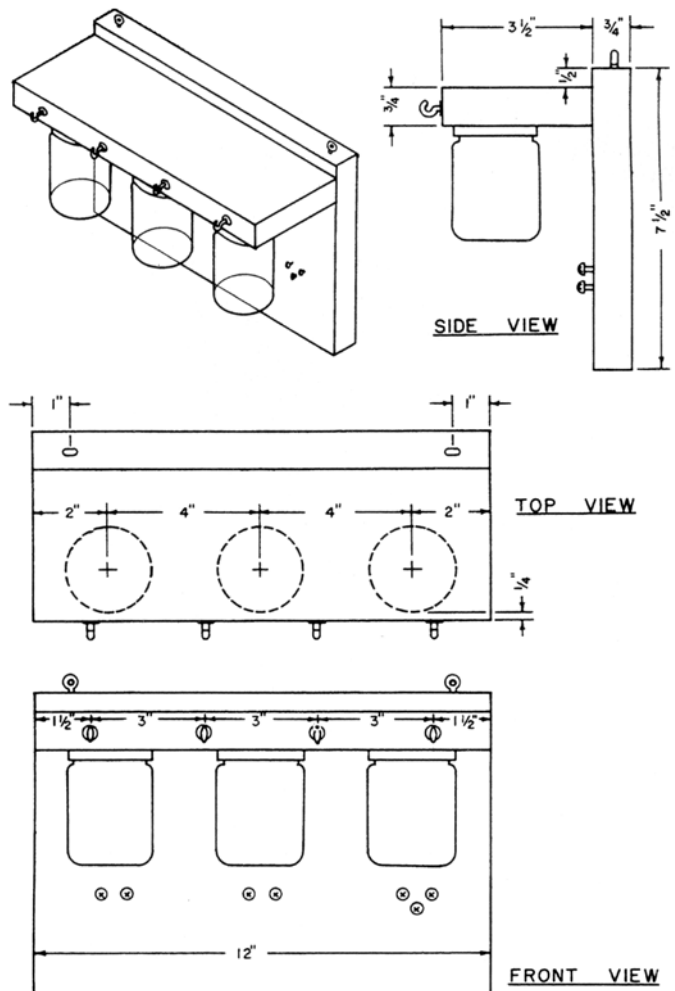
- 1 piece of lumber 1×8 (actual size  $\frac{3}{4}$ " ×  $7\frac{1}{2}$ " ) × 12" for back
- 1 piece of lumber 1×4 (actual size  $\frac{3}{4}$ " ×  $3\frac{1}{2}$ " ) × 12" for shelf
- 3 baby food (or similar) jars with screw type lids
- No. 6,  $1\frac{1}{4}$ " round head wood screws
- 3 Round head wood screws  $\frac{1}{2}$  inch long
- 4 small cup hooks
- 2 screw eyes
- 3 No. 6 finishing nails
- Glue

### Tools needed

- Screwdriver
- Hammer
- Sandpaper
- Shellac

### Instructions

1. Cut pieces to size, sand, and finish before assembly.
2. Punch a hole in each jar lid (center) and fasten the 3 lids to one side of shelf.
3. Glue shelf to back and nail.
4. Locate screws in front to hold tools desired.
5. Put screw hooks on front edge of shelf.
6. Put screw eyes in top edge of back.
7. Fasten to wall with nails or screws through eyes.



## Shadow Box

### Materials needed

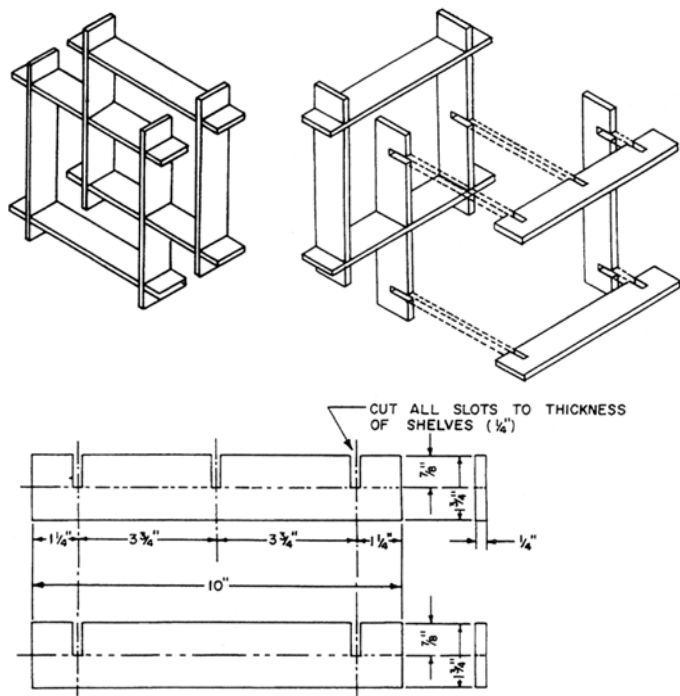
- 8 pieces of interior plywood,  $\frac{1}{4}$ " ×  $1\frac{3}{4}$ " × 10" each
- 2 screw eyes for hanging

### Tools needed

- Table saw, bench saw, or fine hand saw
- Square
- Wood file
- Sandpaper

### Instructions

1. Cut 4 boards to width and length.
2. Lay out slots to be cut, using small square.
3. Use miter saw, bench saw, or fine hand saw. Be sure to make cuts very accurate. Note: Half of the boards have 3 seats. Others have 2.
4. Sand all surfaces smooth.
5. Try fitting pieces together.
6. Finish boards with stain and clear varnish or, enamel before final fitting.
7. Use two screw eyes to mount shadow box on wall.





## Picnic Table with Bench

### Materials needed

#### Table

- 3 pieces lumber  $2 \times 4$  (actual size  $1\frac{1}{2}'' \times 3\frac{1}{2}''$ )  $\times 3'6''$
- 4 pieces lumber  $2 \times 4 \times 2'6''$
- 2 pieces lumber  $2 \times 4 \times 4'$
- 11 pieces lumber  $2 \times 4 \times 7'$
- 2 pieces lumber  $2 \times 4 \times 6'4''$

#### Bench

- 3 pieces lumber  $2 \times 4 \times 3'$
- 4 pieces lumber  $2 \times 4 \times 1'5''$
- 2 pieces lumber  $2 \times 4 \times 1'$
- 2 pieces lumber  $2 \times 4 \times 1'3''$
- 2 pieces lumber  $2 \times 4 \times 1'4''$
- 12d galvanized nails for frame or  $\frac{3}{8}'' \times 4\frac{1}{2}''$  carriage bolts
- 20d spikes

### Tools needed

- Saw
- Wood file
- Hammer
- Sandpaper
- Exterior paint or stain and varnish

### Instructions:

1. Cut pieces to size.
2. Make 2 table leg frames as shown in drawing. Fasten together using 12d nails.
3. Lay the twelve top pieces flat on the floor. Nail a piece of scrap across them at each end to hold them temporarily; this is removed after table is assembled.
4. Set the leg frames upside down on the top, 10" from either end, and toenail cross members of frames to each top board using 12d nails.
5. Toenail center cross member in place. Mark off diagonal braces and nail them in place with 12d nails.
6. Set table right side up and nail each top board to the cross members of the leg frames using 20d spikes.
7. Use wood file to round rough edges and corners.
8. Bench is made in the same fashion as the table except that the top cross member of each leg frame doesn't extend past legs (i.e., it isn't tapered out).
9. Sand and finish bench and table.

Note: For maximum durability, especially if the table and bench are to remain outdoors, use preservative-treated, decay-resistant lumber.

