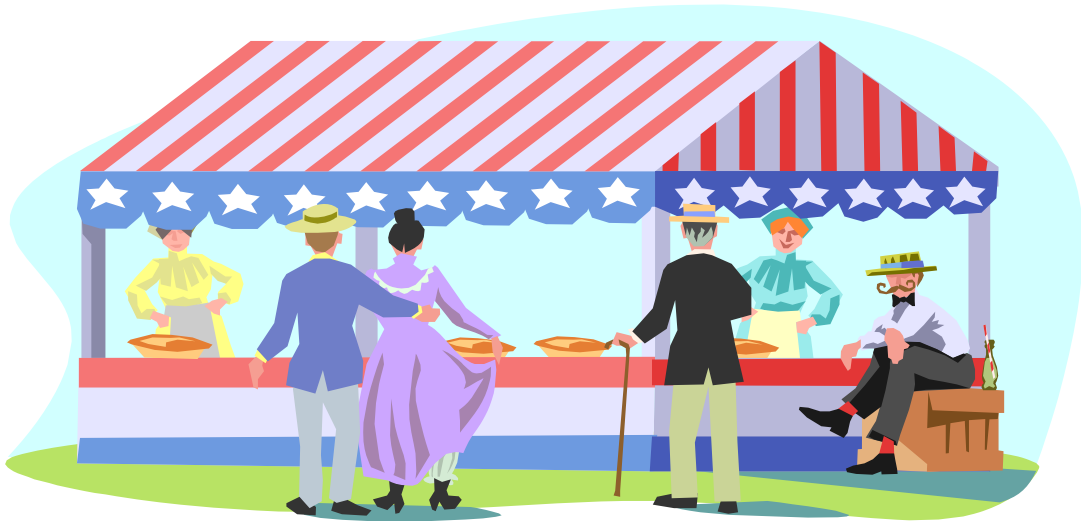


2009 Clackamas County Fair



CELEBRATE THE TRADITION!

August 18-23, 2009

*Entry Forms Are Due:
Thursday, July 9, 2009*

4-H Leader's Orientation Packet

*Distributed June 9, 2009 at the
4-H All Leaders' County Fair Orientation*

All Leader Meeting for County Fair Orientation

June 9, 2009, 7:00 pm

BE SURE TO SIGN IN AT THE REGISTRATION TABLE!!

Agenda

- Welcome** Kris Vavrosky, 4-H Fair Management Committee
- Introductions**..... Kris Vavrosky, Superintendents, Other Fair Management Committee Members, OSU Extension Staff, Clackamas County Fair Staff
- Let's Go To The Fair!** Wendy Hein, 4-H Extension Agent
- A Message from the Fairgrounds** Rayven Davis and Gerri Pottratz, Fair Manager
- Animal Care and Housing** Greg Burke and Mike Corless, Overall Livestock Superintendents
- Fundraisers at Fair**..... Paul Hardzinski, Clackamas County 4-H Leaders Assn.
- Walt Burke Memorial Award** Linda Burns, 4-H Livestock Advisory
- Announcements**Kris Vavrosky
- Instructions for Picking up Materials** Wendy Hein
- Pick up your CLUB PACKET and FAIR BOOKS, and visit with Superintendents**



TABLE OF CONTENTS

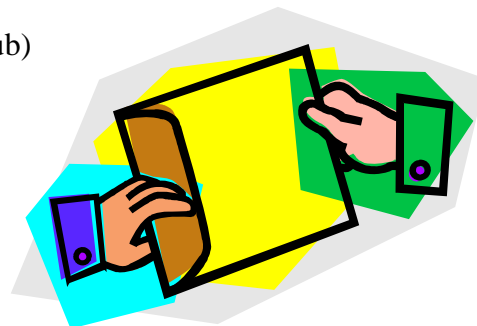


	Page
Club Packet Contents	3
New & Noteworthy Information	3
Important Dates to Remember and Share with Parents and Leaders	4
General Information	5
4-H Member Exhibitor Admission	
4-H Leader and Parent Discount Season Passes	
Health and Code of Conduct Forms Required	
To Obtain Additional Exhibitor Handbooks	
Exhibit Tags Required	
Entry Form Information	6
Eligibility, Premiums and Ribbons	7
Fair Activities That Are Open to ALL 4-H Members.....	7
Animal and Human Disease Are Everyone's Concern	8
County Fair Help Needed.....	8
Thank You Letters.....	8
CC4-HLA Fundraiser Events	8
2009 4-H County Fair Superintendents.....	9-10

CLUB PACKET CONTENTS

All club packets contain:

- Club/Independent Roster (1 per club)
- 4-H Code of Conduct/Health Emergency Information Form (1 per member)
- Clackamas County 4-H Fair Entry Form (1 per member)
- Clackamas County Contest Scheduling Form (1 or more per club)
- County Fair Help Needed Form (1 or more per club)
- Sportsmanship Expectations and Showing Etiquette (1 of each per club)
- Short-term Volunteer Agreement (1 or more per club)
- Fundraiser flier (1 per member)
- Walt Burke Award Nomination



Clubs with static exhibits also receive:

- Static Exhibit Requirements for 2009 (1 per club)

Clubs exhibiting livestock also receive:

- Letter to Livestock Leaders (1 per club)
- Livestock Club Fair Entry (pen/stall reservation) (1 per project area)
- Animal Welfare Policy Form (1 per member)
- Camping Reservation Form (1-2 per club)

Clubs exhibiting small animals also receive:

- Additional Information for Small Animals (1 per club)
- Rabbit & Cavies Club Fair Entry (cage reservation) (1 per rabbit/cavy club)
- Rabbit & Cavy Supplemental Entry Form (1 per rabbit/cavy member)
- Coop Tag Information Sheet (coop reservation) (1 per poultry/pigeon member)
- Animal Welfare Policy Form (1 per member)

Looking for extra copies of any of these forms?

Print them from our website <http://extension.oregonstate.edu/clackamas/4h/Fair> or pick them up at the Extension office.

Looking for Exhibit Tags?

Pick them up at the Extension office during regular office hours, available June 12 through August 11, or at the 4-H Fairgrounds office August 15 & 17.

Looking for Explanation Cards?

Print them from the state website <http://oregon.4h.oregonstate.edu/fair-exhibit-and-contest-materials> or pick them up at the Extension office.

NEW & NOTEWORTHY INFORMATION

- The **Fashion Revue** public show will be Saturday, August 22, at 5:00 pm.
- The new **Oregon 4-H Animal Science Agreement** replaces the Animal Welfare Form used in past years.
- The **Impromptu Speaking** class for Juniors was left out of the fairbook. The class number is 211 603 011.

Please share this information with your members!



Important Dates to Remember and Share With Parents and Leaders



County Fair Entries DUE at the Extension Office - Thursday, July 9 - use the drop box after 4:30 pm!
Leaders need to sign up members and independent members need to sign up in all exhibits and contests **including livestock and small animals** in which they plan to participate during fair week. No classes may be added once the entry deadline has passed. **No exceptions will be made!**

Livestock Entry Meeting - Thursday, July 9, 7:00 pm, Extension Office
Leaders may bring entries to the meeting. All Livestock entries are still DUE on July 9.

EXHIBIT HALL ENTRY DATES

STATIC EXHIBITS – Saturday, August 15 - 9:00 am to 12:00 noon & 1:00 to 5:00 pm

Clover Buds*	Crocheting	Fashion Revue	Recycling Waste Reduction
Child Development	Educational Displays	Home Environment	Clothing Judging Contest Day
Clothing	Engineering	Natural Science	
Computers	Expressive Arts	Recycle Reuse	

STATIC EXHIBITS – Monday, August 17 - 10:00 am to 1:00 pm & 1:30 to 5:00 pm

Clover Buds*	Food Preservation	Photography	Foods Judging Contest Day
Foods and Nutrition	Horticulture		Horticulture Judging Contest Day

CLOVER BUDS* - Poultry, Rabbits & Cavies – Tuesday, August 18 – 10:00 to 11:00 am check in

* Classes can be found in the 4-H Clover Buds section of the Fair Exhibitor Handbook. **These are the only classes that K-3rd grade youth may enter in the fair.** Participant ribbons will be awarded to each exhibitor

STATIC EXHIBIT RELEASE – Sunday, August 23 - 8:00 pm

Static exhibits are released from the 4-H Exhibit Hall Building starting at 8:00 pm. Exhibit building will close at 7:30 pm to prepare for checking exhibits out and will re-open at 8:00 pm. All exhibits need to be picked up at that time.

LIVESTOCK ENTRY DATES

ALL 4-H LIVESTOCK, POULTRY, RABBITS & CAVIES MUST BE ON THE GROUNDS & IN THE BARN NO LATER THAN 8:00 PM, MONDAY, AUGUST 17.

FINAL LIVESTOCK WEIGH-INS – Monday, August 17

Market swine – 2:00-9:00 pm	Market sheep, goats & beef – 6:00-9:00 pm
Market chickens – 3:00-9:00 pm	Market rabbits – 6:00-8:00 pm

MARK YOUR CALENDARS!

4-H FAIR DATES

4-H Horse Fair – July 11-17, Clackamas County Fairgrounds (entry deadline June 1)

4-H Dog Fair – July 10-11, Clackamas County Fairgrounds (entry deadline June 22)

Clackamas County Fair – August 18-23 – Clackamas County Fairgrounds (entry deadline July 9)

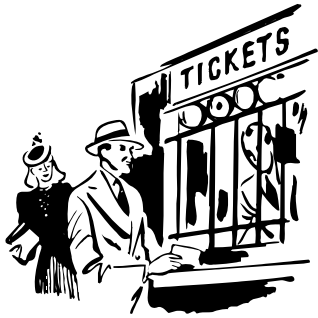
State Horse Fair – August 21-25 – State Fairgrounds, Salem

State Fair – August 28–September 7 – State Fairgrounds, Salem

General Information

4-H Member Exhibitor Admission

4-H members who are exhibiting during County Fair as well as those who participated in Dog Fair and Horse Fair will pick up Admission bracelets at the 4-H Exhibit building. There is no charge for the bracelets, which allow members free daily admission to the fair. Rodeo admission is \$1.00 with a bracelet (4-H / FFA bleacher section) on Tuesday, Wednesday, and Thursday only.



Member bracelets will be issued:

Saturday, August 15	9:00 am-12:00 noon	and	1:00-5:00 pm
Monday, August 17	11:00 am-5:00 pm	and	6:00-9:00 pm

- ◆ **BRACELETS WILL BE PLACED ON THE ARM OF THE ELIGIBLE 4-H MEMBER.**
- ◆ **NO BRACELETS FOR 4-H MEMBERS WILL BE GIVEN TO LEADERS OR PARENTS.**
- ◆ **4-H MEMBERS MUST BE WEARING THE 4-H BRACELET IN ORDER TO GAIN ADMISSION TO THE FAIRGROUNDS. THOSE NOT WEARING BRACELETS MAY BE CHARGED REGULAR ADMISSION PRICE. IF YOU LOSE YOUR BRACELET, ENTER THROUGH THE WILL-CALL WINDOW.**

Broken Bracelet Policy:

\$1 replacement cost for the first time **with** the broken bracelet.

\$10 replacement cost for each additional bracelet **with** the broken bracelets.

\$10 for any replacement when the broken bracelet is **not** turned in.

4-H Leader and Parent Discount Season Passes

Adult Season passes (in the form of a bracelet) will be offered to 4-H leaders and parents for \$25.00, which is less than the price of the regular adult season ticket. **TWO PASSES PER 4-H FAMILY.** These passes are for the sole use of 4-H Leaders and 4-H Parents, **not other family or friends.** Season passes do not include rodeo admission. They are not transferable and **MUST BE WORN BY THE PERSON TO WHOM THEY ARE ISSUED.** Season Parking Passes for 4-H leaders and parents are \$25.00. Passes will be available Saturday, August 15 – 9:00 am-noon & 1:00-5:00 pm and Monday, August 17 – 11:00 am-5:00 pm & 6:00-9:00 pm.

Health and Code of Conduct Forms Required

Both sides of a current Official 4-H Health Form and Code of Conduct form must be completed (regardless of age of participant), **signed by member and parent,** and turned in to club leader **in order for members to receive a fair admission bracelet at fair time.** Don't forget doctor's name, phone and tetanus vaccination date. **In addition, ANIMAL EXHIBITORS MUST complete the "Oregon 4-H Animal Science Agreement" form.** Leaders will turn in both forms with fair registrations. The forms must be signed in order to be valid.

Exhibitors Handbook

Available online at http://www.clackamascountyeventcenter.com/fair_home.html.

Exhibit Tags Required

All static exhibits must have a completed exhibit tag prior to being turned in at Fair. Exhibit tags are available at the Extension office.

2009 Entry Form



To complete the Entry Forms:

All Main Club Contacts will receive a packet of entry forms – one for each member. The Fair Exhibitor's Handbook (also called the Fair Premium Book) contains all the information you and your members will need to complete the fair entry forms. Refer to the 4-H Section. Following is the process you need to follow to get your members properly entered in County Fair.

1. Each member planning to participate in County Fair will need to complete an entry form with your help. Each entry form needs to be checked by the leader for accuracy and signed by both the leader and parent.
2. Fill out the top of the entry form with the member's name, phone number, grade completed, years in 4-H, leader name and club name. On the Health/Conduct Form, list any special needs the member may have that the Extension office should be aware of regarding exhibition at fair.
3. List all of the 4-H classes in the spaces provided that the member will participate in at County Fair.

Project: Write in the project area as indicated in capital letters in the Fair Exhibitor's Handbook.

Class Number: In this space, put the specific class # as listed in the Fair Exhibitor's Handbook. (This needs to be nine digits.)

Class Names: Write the narrative description of the class # as written in the Fair Exhibitor's Handbook.

Description of Entry: In this space, write a description of the actual project that the member is exhibiting or contest that the member is entering.

EXAMPLES:

PROJECT	CLASS NO.	CLASS NAME	DESCRIPTION OF ENTRY
Beef	721106030	Sr. Heifer Calf	Polled Hereford heifer born 9/23/08
Original Art	231100152	Wearable Clothing	T-shirt with beading and painting

4. If additional space is needed for entries, attach a second form.
5. Review all entry forms for accuracy and signatures. Leaders are encouraged to work closely with the **PARENTS** as well as members to ensure members are entered in the desired classes. Correct fair entries are the joint responsibility of the leader, member and parents.
6. Clackamas County 2009 4-H Contest Fair Scheduling Form (ivory form). Complete this form for all contests that have individually scheduled times (these contests are listed on the back of the form). Submit with other entry form and contests deposits. **Contests must be listed on both forms.**
7. Each member **MUST** submit a completed and **SIGNED** Code of Conduct/Health Emergency Form with his/her entry form.
8. Return original copy of the entry forms, the Code of Conduct/Health forms and the pink contest form to the Extension office on or before the July 9, 2009 **DEADLINE**. It is recommended that leaders make copies of the entry forms for their own records.
9. **NOTE:** 4-H Livestock members must **ALSO** submit a completed and signed Oregon 4-H Animal Science Exhibitor Agreement form and their livestock stall/pen deposits with their class entry forms. (Checks, cash, or money order only. Checks preferred; make payable to Clackamas County Fair.) Market Animal Health Forms and COOL affidavits should be brought to fair, **not** turned in to the Extension Office.
10. **NOTE:** Small Animal members must **ALSO** submit a completed and signed Oregon 4-H Animal Science Exhibitor Agreement form and their cage or coop reservations and deposits with their class entry form (except Clover Buds). Rabbit and cavy exhibitors must **ALSO** submit a Supplemental Entry Form.

Exhibiting at Fair

Eligibility: 4-H members must meet two deadline dates to be eligible to show in County Fair. They must be officially enrolled as members in the project(s) in which they wish to exhibit by May 1. With the help of their 4-H leaders, 4-H members must also submit entries for exhibits and contests. Fair entries are due on Thursday, July 9.

Interview Judging: Interview judging relates to static exhibits and is an opportunity for 4-H members to visit with the judge while the exhibit is being judged. This method of judging enhances the learning experience by providing immediate feedback, suggestions for improvement and encouragement to 4-Hers by the expert, the judge. **Please understand, leaders and parents are not allowed to enter the judging area because of space and noise.**

Premiums: All 4-H members, with the exception of Clover Buds, earn money for most entries based on ribbon placement of the exhibit. No premiums will be paid for market animal classes. Premium money is distributed through a voucher system. The vouchers may then be taken to the 4-H Exhibit Building during posted hours to be exchanged for cash. Cash premiums will be paid by the 4-H cashier in the 4-H Exhibit Building during entry times on Saturday, August 15 and Monday, August 17, from 5:00 - 6:00 pm each day of fair, and from 1:00 - 4:00 pm and 8:00 - 10:00 pm on Sunday when exhibits are released. **No premiums will be paid after Fair.**

Ribbons: All exhibits are awarded a ribbon indicating quality of the entry judged in relationship to a standard of excellence. Clover Bud exhibits are evaluated on a non-competitive basis and will be awarded non-premium participation ribbons.

Ribbon placings are: Blue - "Excellent to Superior"
Red - "Good to Excellent"
White - "Acceptable but needs Improvement"
Participation - Non-competitive



In addition, Champion and Reserve Champion ribbons may be awarded in each category. **No additional premiums are awarded for Champion and Reserve Champion placing.**

Fair Activities That Are Open To All 4-H Members



The following exhibits and contests are **not project specific**. They are open to **any** 4-H member in grades 4-12. They **do not** have to be enrolled in the project to be eligible to participate. Some of the Fair activities are also open to **clubs or teams**. Please refer to your **EXHIBITOR'S HANDBOOK** for details in all categories. **Pre-registration** is still necessary for these exhibits and contests just as it is required for the project-specific exhibits and contests.

Open 4-H Exhibit/Contest Categories

Communications: Educational Displays	Conservation
Communications: Presentations	Learn and Earn
Communications: Videography	Recycle Reuse
Computers	Recycling Waste Reduction

Animal and Human Disease Are Everyone's Concern

Anytime that large number of humans, animals, or both get together, the potential for a disease outbreak is high. Not only do animals and humans spread diseases among each other, but the most serious illnesses arise when a disease crosses from one species to another. Last year, several cattle died at a Washington fair from a disease that is common in sheep, and we have all heard about the H1N1 Flu which mutated from a swine virus to a human one. Here are a few precautions that ALL FAIRGOERS should take.

- Wash hands after visiting the barns and when moving from one barn to the other. Also, wipe your feet.
 - Do not pet lots of different animals without washing your hands in between.
- No food is allowed in the barns.
- If you've been out of the country recently, don't visit the barns.

County Fair Help Needed

It takes many volunteers to organize and put on a fair. This is a chance for you and your 4-H members to give something back to the community. 4-H members count this towards community service. The fair is run by volunteers. Please keep this great Fair opportunity available for our youth. Contact the appropriate superintendent for more information. Volunteer today!

Thank You Letters



Thank you letters are a must. 4-H members should thank their leaders for all the help and guidance they've given with projects. Leaders volunteer their time because they want to help youth learn and grow and a thank you letter is appropriate.

Who else needs to be thanked?

The Fair Board
694 NE 4th Avenue
Canby OR 97013

Donors and Sponsors of Awards
Superintendents Who Helped You at the Fair
Parents

CC4-HLA Fundraiser Events



Pancake breakfasts are coming to Horse Fair! Bright and early (7:00 - 9:30 am) on Monday, July 13 and Thursday, July 16, you can enjoy a great breakfast for a modest price and get your busy day started right. Your Clackamas County 4-H Leaders Association sponsors this fundraiser. Volunteers are needed. Please contact Jan Williams at 503-266-8535 if you would like to help out with this fun event!

Quilt & Basket Raffle The CC4-HLA is again planning to have a Basket Raffle as a fundraiser at the 2009 Horse Fair and the 2009 Clackamas County Fair. This is a great opportunity for clubs or individuals to support your leaders' association by donating a basket, buying raffle tickets, or both! Examples of basket themes are car care, gardening, coffee, movie night, candy, scrap booking, art supplies, back to school, sewing, and let's not forget animal care. **All items should be non-alcoholic and non-perishable.** Size and weight should be considered so it is convenient for carrying. We'd appreciate your baskets by July 9 for Horse Fair and by August 15 for County Fair. The baskets will be on display in the 4-H Building during the fair, along a beautiful quilt that is also being raffled. Tickets for the quilt and baskets are \$1 each, 6 for \$5, or 15 for \$10 and will be available only during fair. If you have any questions please contact Paul Hardzinski at 503-631-3927.



Donations to the CC4-HLA are always welcome and very much appreciated. They help fund important programs for Clackamas County 4-H leaders and members, including scholarships, awards, and Program Dollars. Thank you for your support of the Clackamas County 4-H Leaders Association!

2009 4-H County Fair Superintendents (Fair Management Committee)

Officers: Kris Vavrosky, Chair 503-631-8043
 Rhonda Dimick, Vice Chair 503-682-3660
 Beverly Davis, Secretary 503-634-2540

Extension Agent Advisor:
 Wendy Hein 503-650-3122

Livestock Auction Committee

Kathy Mayfield, President 503-998-6302
 Matt Bunch, Manager 503-969-9368

Fair Office - 503-266-1136

Division	Superintendents	Assistant Superintendents	Junior Superintendents
EXHIBIT HALL DIVISIONS			
Head Exhibit Hall Superintendent	Mel Jeffrey 503-657-9353	Susan Simpson 503-656-2291	Heidi Axmaker
Clothing Judging Contest, Cloverbuds (formerly Adventures), Foods Judging Contest	Loyal Hjelmervik 503-651-3390		
Clothing & Textiles, Crocheting, Knitting	Laurie Jarmer 503-691-9409	Callie Jarmer	
Computers, Conservation, Educational Displays, Natural Science, Recycling, Videography	Karey Gibson 503-632-1454		
Expressive Arts, Child Development, Fiber Arts, Home Environment, Learn & Earn, Presentations, Science Engineering & Technology, Rocketry	Jan Williams 503-266-8535	Alexa Brandt	
Fashion Revue	Karen Jeffrey-Markowski 503-329-5021	Anna Balcom	
Food Contests	Susan Simpson 503-656-2291		
Horticulture	Kirsten Vollan 503-268-2226		Olivia Vollan
Creative Writing, Photography	Laura Jeffrey 503-657-9353		
Food Preparation, Food Preservation, Table Setting	Denise Greger 503-654-9133		
ANIMAL DIVISIONS			
Dogs	Kay Deines 503-659-0312	Kelli Pallister 503-663-0119	Maggie Means
Horses	Janice Searls 503-637-3776	Cindy Carlson 503-580-1214 Tom McFarland 503-631-3866	Ashley Gribble Nathan McCarty Michelle Micallef Brooklyn Nelson
Division	Superintendents	Assistant	Junior

		Superintendents	Superintendents
Beef	Allison Weedman 503-752-0218	Linda Burns 503-663-0270	Shelbie Carmony
Dairy Cattle	Lloyd Hansen 503-266-5914		
Sheep	Chris Nichols 503-263-2002 Judy Borgen 503-266-2454		Stephanie Borgen Katie Nichols
Swine	Rhonda Dimick 503-682-3660	Michael Bruck 503-659-8195	Kendall Bruck Chance Kylo
Meat Goats	Diana Thacker 503-632-7494	John West 503-632-2088	Danna Lauer Kara Truax
Dairy Goats	Sandi Lauer 503-682-0789		Danna Lauer
Fiber Goats	Renee Elting 503-632-5587		
Pygmy Goats	Jackie Stonehouse 503-632-8271	Kris Vavrosky 503-631-8043	
Llamas	Adrienne Lulay 541-908-0619	Lissa Hettervig 503-631-8187	
Rabbits, Cavies	Vanessa Borquez 503-756-8854	Terri Weatherly 503-682-8806	Maggie Means
Poultry, Pigeons	Beverly Davis 503-634-2540	Cynthia Christensen 503-524-7033	
OTHER AREAS			
Ribbon Coordinator	Loyal Hjelmervik 503-651-3390		
Campground	Don & Pam Keeney 503-632-7689		
Overall Livestock Co-Superintendents	Greg Burke 503-351-0265 Mike Corless 503-314-6196		

OSU Extension Office

503-655-8635

Fax: 503-655-8636

Before July 1: Mondays – Thursdays, 8:00 am - 11:30 am & 12:30 pm - 4:30 pm

After July 1: Mondays – Fridays, 8:00 am - 5:00 pm

Wendy Hein	4-H Agent	503-650-3122	wendy.hein@oregonstate.edu
Janet Nagele	4-H Agent	503-650-3125	janet.nagele@oregonstate.edu
Tiffany SeLegue	4-H Program Assistant	503-650-3132	tiffany.selegue@oregonstate.edu
Kelly Redwine	4-H Secretary	503-655-8635	kelly.redwine@oregonstate.edu
Roxie Applebee	Extension Office Manager	503-557-5832	roxie.applebee@oregonstate.edu