



4-H Youth Development
Over the Clover

VOLUME 16
 ISSUE 9

OCTOBER, 2008

A monthly publication for the 4-H members, leaders & families of Deschutes County

Congratulations to Medallion Winner—Brandice Durfee

Brandice brought home state fair medallions in key race and figure 8. Medallions are handed out very conservatively at the state horse fair. Up to the top 5% in any single class may win medals. Brandice brought home the only medal given in intermediate key race with the fastest time of 9.252 AND the only medal given out in her age division in Figure 8 also with the fastest time of 10.695. Wow! Good work and congratulations Brandice!



Other members of the Deschutes County team were a part of the top 10% in their various events and participated in the medallion class. While they didn't

receive medal-

INSIDE THIS ISSUE:

<i>Congratulations</i>	<i>1</i>
<i>Calendar of Events</i>	<i>2</i>
<i>What's Up</i>	<i>3-15</i>
<i>County Fair Results</i>	<i>16-23</i>
<i>Character Counts</i>	<i>24</i>
<i>New Leader</i>	<i>25</i>
<i>Lee Side</i>	<i>26</i>
<i>Teen Staff</i>	<i>26-27</i>
<i>Noodles, Needles, &</i>	<i>28-31</i>
<i>Small Animal</i>	<i>32</i>
<i>High Desert</i>	<i>32</i>
<i>BIT</i>	<i>32</i>
<i>Dog House</i>	<i>33</i>
<i>Catch Pen</i>	<i>34-37</i>
<i>Horse'n Around</i>	<i>38-39</i>

lions, they did receive medallion class ribbons for their participation, which is also a terrific honor. This means they're in the top 10% of riders/handlers in their age division in their class.

Congratulations also to the following medallion class participants: Michelle Gant and Jessica Dillin in showmanship, Michael Hopp in Western, Anna Shoffner in Trail and Ransom Hayden in dressage. Congratulations to all, keep up the good work! Additional state fair results will be posted in the newsletter in the future, following all the county fair results. ccb



DESCHUTES COUNTY 4-H CALENDAR

(Can't find it here? Be sure to check the individual project calendars.)

2008

Oct	1	Enrollment for 2008/2009 begins	
	3	Record and Scrap Books due for judging contest by 5 pm	
	11	4-H Leaders' Forum	
	14	Project Advisory Meeting, 6:00 pm North Sister Building	
	18	Speakeasy Workshop 9 am-2 pm	
25-27	Serving @ Central Oregon Symphony Bend High		
	31	Teen Staff applications due!	
Nov	1	Leaders & Members Recognition Night; 6:30 pm-NS	
	3	Executive Committee Mtg, Youth Officers, 6:00 pm; Adult Officers 7 pm	
Jan	4	Teen Staff Meeting, 6:00 pm	
	5	Executive Committee Mtg, Youth Officers, 6:00 pm; Adult Officers 7 pm	
	8	Teen Staff Meeting, 6:00 pm	
	13	Project Advisory Meeting, 6:00 pm North Sister Building	
	16-19	High Desert Leadership Retreat	
22	New Leader Training , 6:30 pm		
	31	Idea Fair	
	Feb	5	Mentor Leader Training, 6:30 pm
		13	State Resumes and Scholarship apps. due
14	Cookie Camp, 9 am-6 pm , N. Sister		
21-23	Serving @ Central Oregon Symphony Bend High		
	Mar	2	Executive Committee Mtg, Youth Officers, 6:00 pm; Adult Officers 7 pm
5-7		Know Your Government, Salem OR	
9		Teen Staff Meeting	
10		Project Advisory Meeting, 6:00 pm North Sister Building	
12	New Leader Training, 6:30 pm		
	Apr	9	New Leader Training, 6:30 pm
18		Presentations Contest, N. Sister Bldg.	
May	1	Home Ec. Skills Contest, Redmond High	
	2	Home Ec. Skills Contest, LaPine	
	4	Executive Committee Mtg, Youth Officers, 6:00 pm; Adult Officers 7 pm	
	5	Teen Staff Meeting, 6:00 pm	
	12	Project Advisory Meeting, 6:00 pm North Sister Building	
June	5	Larkspur Festival; Larkspur Park, Bend	
	6	Redmond Chamber Coffee Clatter	
	25-27	OSU Summer Conference, OSU Campus	

***Changed Date.**

All meetings are at the Extension office unless otherwise noted. Project committee meetings are open to all leaders, members, and parents. This is where decisions are made regarding your project area. Your attendance is encouraged and most welcome.

Thank You

To Our 4-H Family,

Thank you, tow small words that mean so much. Karla and I can not Thank everybody enough for all of the hugs, thoughts, and prayer that everyone has given us during this time since Steve passed away. We appreciate all that has been done for us.

A special Thanks to the Pork Tenders, Jay and Dawn, Baconators, Karla's judging buddies, and their families, Candi, Dave, Tina, and the rest of the 4-H staff, and to everyone else who has been there for us.

Thank You !!!

Donna and Karla Grudt

Teen Staff Applications Due October 31st!!!

Access 4-H

A one-stop internet home for information, instruction, and interaction about 4-H is being created at:

<http://4-h.com/access4-H/>

Your feedback and input in making it happen are welcome. Check it out!



New Parents to Receive a Welcome Letter

We are currently drafting a welcome letter for new parents to 4-H. This is a letter that will outline basic expectations as well as welcome them to the organization. We'll also encourage them to be participatory by volunteering whenever possible.

What's Up?

Members' and Leaders' Recognition Dinner Saturday, November 1st, 2008!

Theme: 4-H: Something to Crow About!

Join us November 1st at 6:00 pm in the North Sister Building. It is a way to say thank you to our wonderful volunteers, celebrate the end of a successful year and usher in a new one by electing our new 4-H Jr. officers and our new adult secretary. This night is for *everyone* involved with 4-H! See additional articles on information regarding this event further back in this edition of the *Over the Clover*.

Members' and Leaders' Recognition Dinner Registration

Saturday, November 1st, 2008 ~ 6:00 PM

Deschutes County Fair and Expo Center ~ North Sisters Building

The _____ 4-H Club will be attending the Dinner. Total number of people attending: _____ Number of tables requested: _____

Please return on or before Friday, October 24th, 2008 to: **Members' and Leaders' Recognition Dinner, 3893 SW Airport Way, Redmond, OR 97756.** Or, email Reaza.mansur@oregon.state.edu with your RSVP.

State 4-H Resumes & Scholarship Applications

There are many 4-H scholarships available at the state level to 12th grade applicants. Last year our own Eric Steensen was awarded the \$4500 4-H OSU Scholarship. Also, there are opportunities for all Sr. level (10-12 gr.) 4-H members through 4-H National Congress. Deschutes County 4-H'r, Cody Smith, will be traveling to Atlanta, Georgia to attend this year's National Congress! Please contact me (Tina) if you have interest in applying for a scholarship or for National Congress! I will be happy to help you get your 4-H resume or scholarship application up and running!

Applications are due to the Extension office by Friday, February 13, 2009, so don't wait!!

Tina

Record Book Training

Who: Leaders, Members, Parents

Why: To make your 4-H experience easier!

When: Oct. 16th, from 6-8 pm

Where: OSU Extension Office

Start the year out right! This class will show new members, leaders and parents how to keep accurate permanent records, and it will give seasoned 4-H'rs a good refresher. This workshop meets some of the additional education requirements for new leaders as well. Invest two hours this fall and your spring will be much more relaxed because you will know what to expect and how to prepare for pre-fair record book checks!

Please RSVP with Reaza: 548-6088 or Reaza.Mansur@oregonstate.edu



What's Up?

What is 4-H?

4-H is an experiential positive youth development education program for boys, girls, young men and young women in grades K-12. The program is designed to meet the developmental characteristics of youth through cooperative learning environments.

The 4-H program is conducted by the Oregon State University Extension Service as authorized by federal and state statutes. The local program is administered by Extension and county staff in accordance with University and Extension policy.

The Deschutes County 4-H program is guided by an adult/youth governance structure that assures the program meets county needs.

Youth typically belong to project clubs and choose from a variety of short and long term activities designed to engage their minds, bodies, and spirits. Projects are broadly related to natural resources, citizenship, livestock, small animal, dog, horse, home economics, and expressive arts. More than 2000 Deschutes County youth participate in some aspect of 4-H programming.

Project clubs are led by trained 4-H volunteers who have enrolled as off campus volunteer faculty with the Extension Service. These volunteers possess vocational expertise or avocational interest in the projects they lead. They present information and curriculum provided by Extension, Oregon State University, or other Land Grant Universities. There are more than 225 volunteer leaders in the Deschutes County 4-H program. Together, they contribute 45,000 hours of service. This time is valued at nearly \$743,000.

Most important, 4-H is not about the individual project. 4-H is about facilitating a process of learning where youth: feel a sense of belonging to something that is safe, secure, develop much needed independence, achieve mastery over new and interesting challenges, and understand generosity is the greatest of all gifts. (Revised from 4-H 0271L)

Serving at COSA

(Central Oregon Symphony)

Here are the dates for the Symphony this year. This is a great activity for your whole club. Call now to reserve your spot to serve at the symphony. The only requirements are black pants/skirt, a white shirt, and a smile

Sat, Oct. 25th 7:00 pm

Sun, Oct. 26th 1:30 pm—FULL!

Mon, Oct. 27th 7:00 pm

For more information, or to reserve a spot for COSA, contact Tina: 548-6088, ext. 7952

Tina.hohman@oregonstate.edu



New Art Class!

Club members will create an art or visual journal and explore many different types of media as they incorporate the elements and principles of design, some art history, lots of exploration and even some field trips! First meeting: **Wed. Oct. 22nd, from 1:30-4:30 pm at 3036 Yellow Ribbon Dr. Bend.**

Questions? Call Kelley Salber at 971-570-6811

4-H and the Family

Upon joining, your family, yes, your family, will become part of one of the largest positive youth development organizations in the United States. While the educational experience is designed for K through 12th grade youth, adult involvement is a key to their success. Family support keeps children interested, enthusiastic, and active in the 4-H program.

It is difficult to balance family, home life, and work. Much of the time is consumed by driving children from one activity to another with little time spent together. 4-H solves this problem by offering numerous projects and activities where youth and their families can learn and grow together. Imagine the fun in developing interests and hobbies as a family.

Welcome to the world of 4-H – we're glad to have you. (Revised from 4-H 0279L) djw

What's Up?



HAM Radio Club Starting!

Deschutes County Amateur Radio Emergency Services (ARES) and 4-H are teaming up to "Give Youth a Call"! Communication is a huge part of our lives, and in this club, youth will be given the opportunity to earn their ham radio licenses and even help with emergency communications in Oregon. An Amateur Radio License will allow you to communicate with people even in an emergency when all other forms of communication are useless. It can also be a foot in the door for many career paths such as Armed Forces, FEMA, Forestry, ER Services, Aviation, 911 & ODOT Dispatch, and much more!

The first meeting will be Oct. 16th at Marshal School from 6:00-7:30pm. For more information, contact the 4-H office at 548-6088, or go to <http://www.deschutescountyares.com/>.

Memorial and Sportsmanship Awards to be Given at Leaders' Recognition Dinner

Each year 4-H'ers apply for and receive memorial or sportsmanship awards for specific achievements in personal growth, 4-H projects, and 4-H club work. These awards have been presented during fair. This year a change is being made. The following awards will be presented during the annual Members' and Leaders' Recognition Dinner:

Chris and David Lawrence Sportsmanship
Zierlein Family Small Animal Sportsmanship
Bonnie Holtby Memorial
Wendy Sheerer Memorial
Kathy Bishop Memorial
John Ayres Memorial
Merv & Sally Fleming Scholarship

The 4-H staff is concerned that the meaning behind the establishment of these special awards is being lost as new generations of 4-H'ers enroll in the program. Therefore, a greater emphasis is going to be placed on the significance of the award. Applicants will need to become more familiar with the people, past and present, whose names, accomplishment, and beliefs are forever remembered as a result of the award.

Please refer to this year's premium book for changes in application processes. djw

Merv & Sally Fleming Start NEW Educational Scholarship

Merv & Sally have sponsored a very special horse award, recognizing a 4-Her who was committed to work with a young horse. Since giving youth a young untrained horse isn't garnering as much interest as we would like, they are putting their contribution into college/trade school scholarships.

Eligible 4-Hers are graduating seniors, who are exemplary 4-Hers and youth in our community. **These may be 2008 or 2009 graduates.** Applications are available at the office. The award winner will be announced at the 4-H Leaders & Members Recognition Dinner. The scholarship winner, will receive a **\$1,000** scholarship during their second term in college or trade school.

For details and more information, stop by the office and pick up an application. Applications will be due **Wednesday, October 15.**

Know Your Government Dates Set For 2009

The dates for the 2009 Know Your Government (KYG) program are: Thursday (2 p.m.), March 5 – Saturday (noon), March 7. The conference site will be the Salem Conference Center and Phoenix Grand Hotel. Mark your calendars!

2008/2009 Advisory Committee Schedule

ALL AREAS: Horse, Dog, Small Animal, Livestock, Natural Resources, & Home Ec/Expressive Arts

All meetings are Tuesday and begin at 6 pm with a short educational topic, followed by a general session, followed by project area meetings.

Tue, Oct 14, 2008	Tue, May 12, 2009
Tue, Jan 13, 2009	Tue, Jul 14, 2009
Tue, Mar 10, 2009	Tue, Sep 8, 2009
	Tue, Oct 13, 2009

All clubs are expected to have a representative at their related meeting. Thanks for your participation. ccb

What's Up?

Deschutes County 4-H Volunteers Have the Right Stuff

4-H relies heavily on a model of learning called Experiential Education. In short, 4-H leaders present members with an experience, allow members time to reflect on the experience, assist members in developing thoughts or ideas about the experience, and finally experiment with new thoughts and ideas. (David Kolb, et al, Organizational psychology: an experiential approach, Prentice-Hall, New Jersey, 1971).

In essence, volunteer leaders enable the learning process by telling, showing, and involving (TSI) members in a project. This is a tried and true, systematic method of helping 4-H'ers gain new life skills enabling them to become productive and contributing members of society.

It is not enough, however, to assume this method of teaching works in isolation. At least three learning styles are employed by members in every learning opportunity. Preferred learning styles fall into three categories: auditory (hearing), visual (seeing), and kinesthetic (touching). These styles align easily with telling, showing, and involving learning process.

On average, members learn 45% from what they are told, 45% from what they see, and 10% from what they manipulate. If all children were created equal, this would make a one hour project meeting very productive. Twenty seven minutes would be devoted to lecture. Twenty seven minutes would be allotted to demonstration. The remaining six minutes would be consigned to hands-on activities. This is not a perfect world.

Perception is everything. Of the five senses, three are primary to the learner's perception of the world and how he communicates: seeing, hearing, and touching. Although, smelling and tasting play lesser roles, they cannot be ignored in the learning process.

Positive communication among individuals and groups is best achieved when all involved perceive, store and retrieve information either through seeing, hearing, or touching. Again, the world isn't perfect. For leaders, it is important to understand and acknowledge a personal preference. Then, develop a teaching strategy that combines the other two. The final step is to recognize and acknowledge the preference of members. Do they prefer learning through hearing, seeing, or touching?

Eye accessing cues are good predictors of learner preference. The positions of a learner's pupils provide clues to understanding, storage, and information retrieval.

When right handed youth or adult eyes are positioned up to the left, up to the right, or unfocused and straight ahead tend to be visual learners. When eyes are level right, level left, or down and to the left, students prefer learning through hearing. Those whose eyes are positioned down and to the right are inclined to be touching learners. It is important to remember hand dominance plays a role too. Left handed people will look down to the right if hearing is a preferred learning style and down to the left if touching works best.

What does this mean? If you know a learner is more visual try communicating with words such as: see, look, focus, watch, clear, etc. If he is more hearing oriented use words like: listen, talk, said, speak, hear, etc. For the touch learners try these words: feel, hold, grab, handle, action words, etc. (Robbins Research Institute)

For leaders, communication is destined to be better if you know your personal preferences and those of your members. Moving from telling, to showing, to involving will be less a challenge. Each new club experience will enable youth to reflect on new concepts, develop thoughts and ideas, and experiment with new knowledge or skills. djw

What's Up?

Don't Forget...

September 30, 2008 closed out the 2007-2008 4-H year. The 2008-2009 year began October 1, 2008. Certain forms and reports are due. If your club has a checking or savings account you will need to submit a financial report to the Extension office. These financial forms are used by the Deschutes County 4-H Leaders' Association as it reports to the IRS and state. Remember, your 4-H club's assets are actually assets of the Leaders' Association. As such, the Association needs to account for all dollars raised and held in the name of Deschutes County 4-H. Call the office if you have questions.

Also, don't forget to re-enroll yourself and club members ASAP in October. Technically, in order to hold any type of club function, all the necessary forms need to pass across Reaza's desk. Don't jeopardize the medical and liability coverage provided by the state 4-H program and the Deschutes County 4-H program to members and leaders by failing to re-enroll prior to the first club meeting. djw

More Online Fillable Project Records Now Available

The follow project records are now available as fillable word documents!

- Photography project record (4-H 770R)
- Foods Preservation project record (4-H 933R)
- Generic project record (4-H 038R)
- Sewing/Clothing project record (4-H 9200R)
- Knitting project record (4-H 960R)
- Crochet project record (4-H 962R)
- Animal Science Jr and Int/Sr. records (4-H 1001R and 1002R)

Go to:

<http://extension.oregonstate.edu/catalog/4h/>

Check out the website, several project records already exist!

Serving for Redmond Concert Association



Sun. Oct 26th, 2:00 & 6:30

This event will be held at **Redmond High School**. I will need 4 or 5 members to serve at each concert (Much like COSA). The only requirements are black pants/skirt, a white shirt, and a smile. For more information, or to reserve a spot, contact Tina: 548-6088, ext. 7952

Health Forms Must be Filled Out

A completely filled out health form is worth the health and safety of every member and leader in our program. When re-enrolling in the program, double check to make sure every applicable line is filled out with the necessary information. Parental/guardian consent is needed by the medical community to perform services for youth in the absence of parents/guardians. Leaders, in the absence of a spouse or legal representative, the medical community is unable to perform its duties too. djw

OTC Labeling Schedule Help Needed

We need for clubs to sign up to Label the *Over the Clover*. We ask clubs to donate their efforts to label the newsletter. Contact Reaza

Month of Issue	Dates to Label	Club Responsible
Oct'08	10/1 or 10/2	Sew in Style
Nov '08	11/3	Bend Rabbit Raisers
Jan '09	1/6	VIP
Feb '09	2/3	Gigi Cramer
Mar '09	3/3	Hog Wash
Apr '09	3/31	
May '09	5/4	High Desert Livestock
Jun '09	6/2	Boots & Buckles
Jul '09	7/6	

What's Up?

New Leathercraft Club



A new Leathercraft club is forming. New leaders with over 18 years of experience working with leather are excited to share their knowledge with the 4-H community.

The club will likely meet in Redmond. Contact Sheryl or Tom Katzke at 504-0324 for more information.

Teen Staff Applications
Due October 31st!!!

Check Out the Website, It has a NEW look!

For one thing, our website has a new look! Check it out at <http://extension.oregonstate.edu/deschutes>. On the right rail (right side of the page) are the “Upcoming Events” for the week. 4-H events will be listed as well as the other program areas in Deschutes Co Extension. This is much more visible than going to a calendar page and serves as a handy reminder of what is coming up. The 4-H page has not changed very much. You will still have issues of *Over the Clover* available at the click of the mouse. The 4-H Forms page has been revamped and now includes the Fair Premium Book and State 4-H Forms (advancements, records, etc.) If there is anything else you would like to see on the 4-H page, email me at gay.demmer@oregonstate.edu and I will do my best to accommodate you. After all, this site is for YOUR use and I'd like to make it as user-friendly as possible so all suggestions will be welcome!

Check out the 4-H SET page of the web. BIT (Business & Technology) is now called SET (Science, Engineering & Technology) and covers lego robotics, gis, computers, etc. For more information on this program, contact Sarah Cofer at 771-1411 or sarah.cofer@oregonstate.edu. Gay

New Club Requirements

The leaders' association is working to implement some new guidelines for leaders. This is an effort to be sure all clubs are meeting regularly.

- Clubs need to meet a minimum of 8 times per year
- Clubs need to submit their calendar to the office, at least, quarterly.

Candi is going to try and visit several club meetings, so we need to know when those opportunities are. Remember, this is a minimum requirement, most clubs are meeting significantly more often. One of the important benefits of 4-H is the feeling of belonging; it's impossible to feel that if the group never has meetings. These meetings can be community service, bowling, camping, doing record books, working with your project, doing public speaking, or making cookies—just get the group together—it will make your whole year go easier.

I know everyone is very busy—this is important. If you can't make it happen, call me, let's help get you a co-leader or some junior leaders to step up so the opportunity for club members is there. ccb



Email Facing Some Challenges

Evidently someone hacked into OSU and sent out emails that weren't appropriate. Servers such as Hotmail, MSN, Yahoo, and several others will not let anything from OSU go through to those inboxes. This is very frustrating for us since we are trying to get everyone on-board with using email as a quick and efficient way of communicating. OSU is working on this problem, but until it is solved, be sure to check out the website for updates or give us a call. Gay

What's Up?

Fairgrounds Service

As most of you know, the fairgrounds continues to allow us meeting space at no charge. Instead, we try to provide volunteer labor at different times throughout the year to “payback” the use they allow us. I would like to continue our volunteer service this year. I would like to schedule clubs to come and spend 2-4 hours just doing whatever they need done. It could be a weekend or a day off of school. Members may pull weeds, pick up trash, wash off chairs, sweep, or any number of other tasks. I would very much appreciate every club who participates in events at the fairgrounds to take the time to contribute at the fairgrounds. You pick the day and I'll work it out with operations. All clubs must come with at least 1 adult and I prefer 1 adult to every 6 youth, more if they're all junior level members. So, if you've done fair, fashion revue, livestock show, a meeting or a horse show, please schedule and fill out the following form and turn it into Candi at your earliest convenience.

Fairgrounds Service Sign Up

Name of Club _____ Name of Leader or Contact Person _____
Phone _____ Email _____
How many youth are coming? _____ How many adults? _____
What are the ages of the youth who are participating? _____
When would you like to come and help out? _____ Times _____
Send this form or Email this information to Candi at 3893 SW Airport Way, Redmond, OR 97756 or Email at Candi.Bothum@oregonstate.edu

Deschutes County 4-H is Looking for Alumni

Every year the 4-H program says good bye to graduating seniors. It even says good bye to volunteer leaders who have invested several hours in making the program strong and 4-H'ers even stronger. It is a shame to lose contact with these people that have contributed to the value and history of Deschutes County 4-H.

In the interest of creating a Deschutes County 4-H Alumni Association, this is where we can use your help. Many of you have participated in Deschutes County 4-H as a parent, member, leader, or program supporter. Can you help us locate our long lost alums? You can help by forwarding this form to someone you know. Or, simply fill out what you already know and send it back to the 4-H office. We appreciate your efforts.

Where are You Now?
Name: _____
Address: _____
City: _____ State: _____ Zip: _____
Phone: _____
Email: _____
Do you have contact information for other Deschutes County 4-H Alumni?
Return to: DC4HALum, 3893 SW Airport Way, Redmond, OR 97756

What's Up?

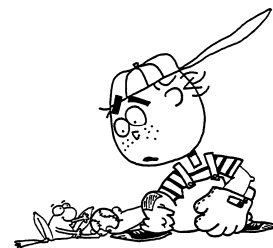
Let's go to:



Speakeasy

**Saturday, October 18th
Deschutes Co. Fair Grounds
9am -2 pm
\$3 per person
Bring a sack lunch!**

Join Cindy Osterlund, Gilliam County 4-H Agent, to learn how to give a better presentation! Speaking in public is one of the most feared, yet most needed skills for success in so many areas of life. While it may strike fear in the hearts of many of us, the more often we speak in front of a crowd, the easier it becomes. Join other beginning and novice 4-H presenters for this fun and interactive workshop!



What will we do?

- ◆ Play speaking games
- ◆ Learn how to give great presentations
- ◆ Make posters
- ◆ Use fun kits
- ◆ Laugh!



**OK, I'll be there!
And I'll bring a friend!**

Registration for *Speakeasy*

Name(s): _____

Phone #: _____ Amount due: \$3 per person = _____

Make checks payable to DCLA
Mail to:
PO Box 1251
Redmond OR, 97756

For more information contact Tina:
548-6088, ext. 7952
tina.hohman@oregonstate.edu

What's Up?

Advisory Committee Meetings CHANGING! READ THIS, It affects YOU!

As most of you are aware, we are going to change the format of our project committee meetings. These are the horse, livestock, home ec., small animal, dog, and natural resource meetings that we encourage someone from every club to attend. Parents, members, leaders and co-leaders are ALL invited! In the 2008-09 4-H year, we are going to meet with all the committees on the same night.

If you are interested in multiple project areas, you will need to get a parent, co-leader or older member to help, so your club can be represented at all related project areas.

The TENTATIVE schedule is:

6 pm - 6:30 pm ~ an educational component

6:30 - 7:00 pm ~ a general meeting, all areas together

7:00 - 8:00 pm ~ specific project areas meet. (This could go as late as 8:30 pm)

Candi will rotate between horse, small animal and livestock. Dave will rotate between dog and natural resources and Tina will handle the home economics meeting.

In advance of each meeting, a facilitator and recorder will be assigned. Depending on the project area, these folks may change or remain the same throughout the year. These are important jobs; doing a good job at both of these will keep meetings running smoothly and the 4-H staff informed of the needs of the group.

This will significantly lesson night meetings allowing for other educational opportunities and some much needed evening time.

In the event that we can't accomplish all we need to, we may find it necessary to schedule an additional project area meeting.

All meetings will be held at the North Sister building on the fairgrounds.

The **very tentative** schedule is:

Tuesday, Oct 14th, '08	Tuesday, May 12th, '09,
Tuesday, Jan 13th, '09	Tuesday, Jul 14th, '09
Tuesday, Mar 10th, '09,	Tuesday, Sep 8th, '09,
Tuesday, Oct 13th, '09.	

No meetings in Nov or Dec. This should avoid major holiday conflicts and allow timely enrollment, pre-fair and post-fair meetings.

We'll give this a try for at least one year and then re-visit in October 2009, to determine if we should continue. Please share your thoughts! Thanks for your flexibility. ccb

What's Up?

Four 4-H Educational Leader Forums – Fall 2008 An OSU Extension 4-H Youth Development Program



All 4-H volunteers, resource leaders, teen volunteers, parents, and staff are invited to attend any location, on any Saturday.

Each educational track (#1, 2, 3) will provide six (6) hours of education, interactive learning, time to ask questions, share ideas, discover resources, and apply learning.

<p>September 27, Beaverton Washington County Extension Office 18640 NW. Walker Rd. #1400 South side of Capitol Center Complex (Entrance D1) 1. Focus on Food & Nutrition 2. Get SET for Learning Technology 3. 4-H: Business, Fun, Learning & Leadership!</p>	<p>October 11, Redmond Deschutes County Fairgrounds 3893 SW. Airport Way Bldg: High Dessert Activity Center (Sign=HDAC) 1. Focus on Food & Nutrition 2. Get SET for Learning Technology 3. 4-H: Business, Fun, Learning & Leadership!</p>
<p>October 4, Roseburg, Douglas County Umpqua Community College Bldg: Campus Center, 1140 Umpqua College Rd 1. Focus on Food & Nutrition 2. Get SET for Learning Technology 3. Dog Clinic: Obedience & Showmanship</p>	<p>October 25, La Grande, Union County County Extension Office Bldg: Ag Service Center, 10507 N. McAlister Rd 1. Focus on Food & Nutrition 2. Get SET for Learning Technology 3. Dog Clinic: Obedience & Showmanship</p>

Focus on Food & Nutrition has been cancelled in all locations

Objectives for the 4-H Volunteer Forums are to:

1. Reach volunteers of every age and interest in all counties.
2. Prepare participants to teach others in local programs.
3. Help 4-H volunteers enhance skills for their unique roles.
4. Acknowledge Oregon 4-H volunteer contributions.
5. Provide resources and promote volunteer networks.
6. Prepare volunteers to provide opportunities for 4-H youth to belong to a group, master skills, be generous, and independent.

PARTNERS in Education and Funding Annual 4-H Leader Forums are planned with Oregon 4-H Leaders' Association, state 4-H Youth Development Program, and local county hosts. Monsanto and the Oregon 4-H Foundation continue to be funding partners for 2008-09 4-H Leader Forums. Their generosity helps to keep fees low.



the

***A pre-registration count is needed to have adequate materials and snacks/lunch available.**

Pre-Registration Form for Fall 2008 Regional 4-H Volunteer Forums

The \$10 fee with grant funds from Monsanto and 4-H Foundation will cover cost of program materials.

Lunch - Bring your own, or purchase at each Forum location for \$5.

NAME: _____ **COUNTY:** _____
Please print. Submit info for additional name(s) on separate sheet.

ADDRESS: _____
House / Apt. / Str. City Zip

PHONE for Emergencies: Home _____ **Work or Cell** _____

E-MAIL for Pre-Forum Communication: _____

The **LOCATION** I will attend is: **Sept. 27 at Beaverton** **Oct. 11 at Redmond**
 Oct. 4 at Roseburg **Oct. 25 at LaGrande**

The **ONE (6-hour) EDUCATIONAL TRACK** I plan to attend is:
 Food & Nutrition **Get SET** **4-H: Business...Leadership** **Dog Clinic**

For **LUNCH**, I plan to: **Bring my own Lunch** **Purchase Lunch at the Forum Location for \$5**

RETURN 1/2 page Pre-Registration Form with \$10 fee:

BY: FRIDAY, SEPT 19 - if planning to attend Sept. 27, or Oct. 4 Forums.

BY: FRIDAY, OCT. 3 - if attending Oct. 11 or Oct. 25 Forums.

TO: 2008 4-H Leader Forum, Attn: Mona
105 Ballard Hall, OSU
Corvallis, Oregon 97331-3608

Focus on Food & Nutrition has been cancelled in all locations

If special physical or learning accommodations are needed, please contact Marilyn, at: 541-737-2794

The OSU Extension 4-H program offers its programs and materials equally to all people.

What's Up?

Powerful Words for a Powerful Program

Kellie Eldridge, a leader of High Desert Dogs, provides these important words to her club members. You may want to know and memorize them. Judges have been known to ask questions about the pledge, emblem, motto, creed, and colors. Thanks, Kellie. djw

THE 4-H PLEDGE

I pledge my head to clearer thinking,
My heart to greater loyalty,
My hands to larger service, and
My health to better living,
for my club, my community, my country, and my world.

HEAD- knowledge is useful throughout life

HEART- strong personal values, positive self concept, and a concern for others

HANDS- workforce preparedness, useful skills, science, and technological literacy

HEALTH- healthy lifestyles

THE 4-H EMBLEM

The first 4-H emblem was a three-leaf clover, introduced sometime between 1907 and 1908. The three "H"s represented head, heart, and hands. A fourth "H" representing health was added in 1911. The clover, the official 4-H emblem, is protected by the U.S. Congress.

THE 4-H MOTTO

"To Make the Best Better"

THE 4-H COLORS

GREEN- nature's most common color is emblematic of springtime, life and youth

WHITE- symbolizes purity and high ideals

THE 4-H CREED

I believe in 4-H club work for the opportunity it gives me to become a useful citizen.

I believe in the training of my Head for the power it will give me to think, plan and reason.

I believe in the training of my Heart for the nobleness it will give me to be kind, sympathetic, and true.

I believe in the training of my Hands for the ability it will give me to be helpful, skillful, and useful.

I believe in my country, my state, my community, and in my responsibility for their development.

In all these things I believe and I am willing to dedicate my efforts to their fulfillment.

Who Needs Wood? We Need Wood!

If you or someone you know has some good hardwood (pear, apple, cherry) of which they are willing to part with, the 4-H program will be more than happy to pick it up. Each year the Buyers' Barbecue and the Recognition Dinner require a lot of wood to make the coals. Call 548-6088 or email reaza.mansur@oregonstate.edu if you can help out.

Volunteers Needed for State Executive Council

The state is looking for volunteers to serve on the Leader's Association Executive Council. There are positions for both adults and teens. The state association is active in planning and sponsoring state and regional educational programs. Application forms are available at the extension office.

What's Up?

4-H Night with the Portland Trailblazers



Mark your calendars; we have again scheduled a 4-H night with the Portland Trailblazers. This year will be March 26, 2009 for an evening game against the Phoenix Suns (who now have Shaq). A large block of the higher level (\$10 seats) have been reserved for us although the more expensive seats are also available at a discounted price. We really had a lot of fun last year so encourage your 4-H families to attend, this is a great way to spend a spring break night. Couple of details for this year:

We again are doing the courtside kids which means 20 lucky kids get to high five the blazers as they come on to the court. This year, in order to qualify kids need to be 13 or under and must email me with their name, age, and county before March 1st. We then randomly draw who gets the opportunity and notify them.

At the end of the game we will have access to the basketball court to shoot around and take photos, this is open to everyone who goes and should be pretty fun so make sure your members know.

More information including official ticket prices and the code to buy tickets online should follow in coming weeks. Sara

Leaders Meeting General Session

Agenda Items Will Include:

- ⇒ Educational Piece on the Danish Merit System. This is the award system we use that recognizes youth with Blue, Red or White ribbons.
- ⇒ How advisory meetings will go
- ⇒ Need an adult secretary
- ⇒ Youth Officers
- ⇒ Recognition Night
- ⇒ Friends of 4-H
- ⇒ Idea Fair

Several Clubs Working Together to Plant Flowers at the Fairgrounds



These guys were helping out too!

All photos courtesy of Meg Shanahan

What's Up?

Recognition Dinner Theme Selected

“4-H *Something to Crow About*” is this year’s theme. Clubs won’t have to look too hard to find table decorations. Use whatever is left over from fair décor. This is a night honoring members, leaders and parents. It is a way to celebrate the end of a successful year and usher in a new one. You don’t have to receive a medal or award to be able to attend. **This night is for everyone.** We will recognize special friends of 4-H and honor our members and leaders for their accomplishments.

Please plan to sit at individual tables though. When tables are pushed together several seats are lost. Please, take the time to fill out the RSVP and return it to the office by Friday, October 24, 2008. We sure don’t want to run out of food for this special event.

Canned/Boxed Food Drive

We will be having a food drive this year at the Leaders’ & Members’ Recognition Night dinner. Bring can foods, boxed foods, and/or other non-perishable food items with you to the dinner.

This year there are bound to be families in need all winter throughout the county. All the non-perishable food collected will be distributed to various food banks throughout the county. If you can help, please take this opportunity to share—and get your other club members helping out too!



Things to Know about this Year’s Recognition Dinner

Reserve your club table at this year’s dinner. To reserve a table you should contact Reaza Mansur at 548-6088 ext. 7966 or reaza.mansur@oregonstate.edu. Remember, each table seats eight. A reserved tag, with your club’s name, will be placed on its table. Once the club has been assigned a table, there will be NO switching since change would impact other reserved tables. Tables will be assigned on a first-come first-served basis. The front tables will be first, then the sides, and finally the back. Every effort will be made to see that every club wanting a table has one. If clubs arrive without reserving a table, they are welcome to choose any table that does not have a reserved sign.

Set up time: If clubs wish to have their table judged, please have it decorated between 12:00 p.m. and 3:30 p.m., Saturday, November 1. No exceptions, if you want your table judged. Waiting to decorate tables later in the day throws off the schedule for the banquet start time.

Table coverings will NOT be provided. Club will be responsible for their own decorating needs.

Drawings: The Junior Officers encourage all of the leaders to make sure they are re-enrolled as a leader for the 2007-2008 4-H year. Once again, items have been donated to be given away throughout the evening. So, get to the Extension office and re-enroll, you could win a prize! (You must be present to win!)

Theme: “4-H *Something to Crow about*”

Ushers: These ladies and gentlemen will have a list of club table locations and will be glad to show you to your spot. Leaders will also need to check in with ushers upon arrival to receive a ticket for the drawings.

Desserts: Every family attending please bring a dessert of your choice.

FAIR RESULTS 2008

BEEF

Class 721101010 Angus (Red) Junior Calf (Bull or Steer) (Beef)

AVERY, RACHELLE E GC, CH, B

Class 721101050 Angus (Red) Junior Yearling Heifer (Beef)

CASTROW, CHELSEA A CH, B

Class 721102010 Angus (Black) Junior Calf (Bull or Steer) (Beef)

RENNER, RANDI M B

Class 721102020 Angus (Black) Junior Calf (Heifer) (Beef)

BLOMQUIST, RACHEL A B

Class 721102050 Angus (Black) Junior Yearling Heifer (Beef)

ALBERS, MEGAN F B
BLOMQUIST, RACHEL A B
SIMPSON, CODY A B
MC INTOSH, JACOB D B
WOOD, JESSICA J B

Class 721106010 Hereford Junior Calf (Bull or Steer) (Beef)

ALEXANDER, COOPER D CH, B

Class 721106020 Hereford Junior Calf (Heifer) (Beef)

HARTZELL, ZACK D B

Class 721106050 Hereford Junior Yearling Heifer (Beef)

SIMPSON, CODY A CH, B
BRANT, LEVI J B
STUBBLEFIELD, BAILIE J B

Class 721106070 Hereford Junior Cow (Beef)

HARTZELL, ZACK D RC, B
ALEXANDER, COOPER D B

Class 721112040 Shorthorn Summer Yearling Heifer (Beef)

PICK, SHELBY T CH, B

Class 721112050 Shorthorn Junior Yearling Heifer (Beef)

AUSMAN, BETSY L RC, B

Class 721114020 Crossbred Junior

Calf (Heifer) (Beef)

LYTLE, CLINTON A RC, B

Class 721114070 Crossbred Junior Cow (Beef)

LYTLE, CLINTON A CH, B

Class 721115010 Other Breeds Junior Calf (Bull or Steer) (Beef)

PICK, SHELBY T RG, CH, B

Class 721115050 Other Breeds Junior Yearling Heifer (Beef)

RENNER, RANDI M GC, CH, B
BRANT, LACIE J RC, B
HANKS, DAULTON E B

Class 721115080 Other Breeds Senior Cow (Beef)

PICK, SHELBY T B

Class 721200040 Beef, Club Herd (Beef)

HIGH DESERT HOOVES, CH

Class 721202010 Angus (Black), Producing Cow with 4-H Production R (Beef)

RENNER, RANDI M B

Class 721202020 Angus (Black), Dam and Produce (Beef)

RENNER, RANDI M B

Class 721206020 Hereford, Dam and Produce (Beef)

HARTZELL, ZACK D CH, B
ALEXANDER, COOPER D RC, B

Class 721214020 Crossbred, Dam and Produce (Beef)

LYTLE, CLINTON A B

Class 721215010 Other Breeds, Producing Cow with 4-H Production Re (Beef)

PICK, SHELBY T B

Class 721215020 Other Breeds, Dam and Produce (Beef)

PICK, SHELBY T B

Class 721300000 Market Steer (Beef)

BRANT, LEVI J CH, B
RENNER, RANDI M RC, B
BLOMQUIST, RACHEL A B
SIMPSON, CODY A B
RENNER, J R B
WILSON, DALLAS D B
MATTER, KURIN D B
ALEXANDER, COOPER D B
AVERY, RACHELLE E B
BOEHMER, ZACH A B
BRANT, LACIE J B
CASTROW, CHELSEA A B
HARTZELL, ZACK D B
MC INTOSH, JACOB D B
MC INTOSH, JANELLE D B
MITCHELL, TEFNA R B
NANCE, CODY W B
PENHOLLOW, BROCK C B
PICK, SHELBY T B
ROY, CLAYTON M B
STROUP, ROBIN A B
YORK, JUSTIN L B
JONES, JESSE A B
STOTT, RHEANNA K B
STUBBLEFIELD, BAILIE J B
WOOD, JESSICA J B
RUSSELL, KRISTEN J R
JOHNSON, MONICA A R
STROUP, RANDI K R
STROUP, REID H R

Class 721400110 Bred & Owned, Jr Bull or Steer Calf (Beef)

AVERY, RACHELLE E B
PICK, SHELBY T B

Class 721400120 Bred & Owned, Jr Heifer Calf (Beef)

LYTLE, CLINTON A B
HARTZELL, ZACK D B

Class 721400170 Bred & Owned, Junior Cow (Beef)

LYTLE, CLINTON A B

Class 721700000 Carcass Contest, Beef (Beef)

STOTT, RHEANNA K B

Class 721700101 Beef, Obstacle Course Contest, Junior (Beef)

CASTROW, CHELSEA A CH, B
BLOMQUIST, RACHEL A RC, B
SIMPSON, CODY A B
ROY, CLAYTON M B
STROUP, REID H B
STUBBLEFIELD, BAILIE J B
AUSMAN, BETSY L R
BRANT, LACIE J R

FAIR RESULTS 2008

Class 721700102) Beef, Obstacle Course Contest, Intermediate (Beef)

BOEHMER, ZACH A CH, B
 PICK, SHELBY T RC, B
 ALEXANDER, COOPER D B
 BRANT, LEVI J B
 MITCHELL, TEFNA R B
 JONES, JESSE A B

Class 721700103) Beef, Obstacle Course Contest, Senior (Beef)

RENNER, RANDI M CH, B
 RENNER, J R RC, B
 RUSSELL, KRISTEN J B

Class 721700201) Beef, Team Fitting Contest, Junior (Beef)

SIMPSON, CODY A CH, B
 CASTROW, CHELSEA A RC, B
 BLOMQUIST, RACHEL A B
 AUSMAN, BETSY L B
 STUBBLEFIELD, BAILIE J B

Class 721700202) Beef, Team Fitting Contest, Intermediate (Beef)

HARTZELL, ZACK D CH, B
 PICK, SHELBY T RC, B
 WILSON, DALLAS D B
 MITCHELL, TEFNA R B

Class 721700203) Beef, Team Fitting Contest, Senior (Beef)

RENNER, RANDI M CH, B

SHEEP

Class 771103010) Columbia, Spring Ewe Lamb (Sheep)

CYRUS, MICKAELA L RC, B

Class 771103040) Columbia, Producing Ewe (Sheep)

CYRUS, MICKAELA L CH, B

Class 771103050) Columbia, Spring Ram Lamb (Sheep)

WHIPPLE, ABBIE M GC,
 CH, B
 CYRUS, MICKAELA L RC, B

Class 771106010) Hampshire, Spring Ewe Lamb (Sheep)

SMITH, KAITLIN N RC, B

Class 771106040) Hampshire, Producing Ewe (Sheep)

CYRUS, ALEXANDER B RG, CH, B

Class 771106050) Hampshire, Spring Ram Lamb (Sheep)

CYRUS, ALEXANDER B CH, B

Class 771110010) Romney, White, Spring Ewe Lamb (Sheep)

BRANT, BILLY L B
 BRANT, BILLY L B
 MURRAY, ABAGAIL D B
 MURRAY, ABAGAIL D B

Class 771110040) Romney, White, Producing Ewe (Sheep)

MURRAY, ABAGAIL D CH, B

Class 771110050) Romney, Spring Ram Lamb (Sheep)

MURRAY, ABAGAIL D CH, B

Class 771111040) Romney, Natural Color, Producing Ewe (Sheep)

MURRAY, ABAGAIL D CH, B

Class 771115010) Other Breeds, Spring Ewe Lamb (Sheep)

DENHAM, RACHEL M RC, B

Class 771115030) Other Breeds, Yearling Ewe (Sheep)

DENHAM, RACHEL M B

Class 771115040) Other Breeds, Producing Ewe (Sheep)

DENHAM, RACHEL M CH, B

Class 771115050) Other Breeds, Spring Ram Lamb (Sheep)

DENHAM, RACHEL M CH, B

Class 771116010) Crossbred Meat Breeds color incl., Spring Ewe Lamb (Sheep)

PAYNE, JORDAN C CH, B
 HAKALA, KATIE S B
 SCOTT, KAYLYN S B
 MYERS, COLTER X B
 MC COY, SARAH L B
 MC COY, SARAH L B
 MC COY, TRYSTAN M B
 BERGUM, SHELBY L B

BERGUM, SHELBY L B
 NEWTON, CHANDRA S R

Class 771116030) Crossbred Meat Breeds color incl., Yearling Ewe (Sheep)

BERGUM, SHELBY L B
 POWELL, JANEL J B

Class 771116040) Crossbred Meat Breeds color incl., Producing Ewe (Sheep)

POWELL, JANEL J RC, B
 MC COY, SARAH L B
 PAYNE, JORDAN C B
 CYRUS, AWBREY M B
 BERGUM, SHELBY L B

Class 771116050) Crossbred Meat Breeds, Spring Ram Lamb (Sheep)

BERGUM, SHELBY L RG, CH, B

Class 771118010) Natural Colored Wool, Wool Breeds, Spring Ewe Lamb (Sheep)

LEE, KATIE N B

Class 771118050) Natural Colored Wool Class, Spring Ram Lamb (Sheep)

DENHAM, RACHEL M R
 DENHAM, RACHEL M R

Class 771119010) Wether Dam, Spring Ewe Lamb (Sheep)

MOSS, ELIZABETH B GC, CH, B
 KRUSE, HALEY A B
 MC ELWEE, JORDAN T B
 MOSS, ALLISON M B
 GRIFFITHS, MICHELE N B
 JENSEN, ASHLEIGH N B
 JENSEN, JESSICA N B
 LUTHER, CHARLES L B
 PAYNE, JORDAN C B
 SMITH, KAITLIN N B
 VALLIE, MARISSA R B

Class 771119020) Wether Dam, Fall Ewe Lamb (Sheep)

DIXON, KELSEY M RC, B
 GRIFFITHS, MICHELE N B

Class 771119030) Wether Dam, Yearling Ewe (Sheep)

DIXON, KELSEY M B
 BERGUM, SHELBY L B

Class 771119040) Wether Dam, Producing Ewe (Sheep)

FAIR RESULTS 2008

DIXON, KELSEY M B
 GRIFFITHS, MICHELE N B
 LUTHER, CHARLES L B
 VALLIE, MARISSA R B
 BERGUM, SHELBY L B
 FULLER, DANIELLE C B

Class 771119050) Wether Dam, Spring Ram Lamb (Sheep)

MC COY, SARAH L
 CH, B

Class 771200040) Sheep, Club Flock (Sheep)

CLOVERDALE LIVESTOCK, GC, B
 HIGH DESERT LIVESTOCK, RC, B

Class 771203020) Columbia, Ewe and One Produce (Sheep)

CYRUS, MICKAELA L B

Class 771203050) Columbia, Born & Bred in Oregon (Sheep)

CYRUS, MICKAELA L B

Class 771206020) Hampshire, Ewe and One Produce (Sheep)

CYRUS, ALEXANDER B B

Class 771206050) Hampshire, Born & Bred (Sheep)

CYRUS, ALEXANDER B B

Class 771210020) Romney, White, Ewe and One Produce (Sheep)

MURRAY, ABAGAIL D B

Class 771210050) Romney, white, Born & Bred (Sheep)

MURRAY, ABAGAIL D B

Class 771211020) Romney, Natural Colored, Ewe and One Produce (Sheep)

MURRAY, ABAGAIL D B

Class 771215020) Other Breeds, Ewe and One Produce (Sheep)

DENHAM, RACHEL M B

Class 771215030) Other Breeds, 4-H Member's Flock (Sheep)

DENHAM, RACHEL M B
Class 771215050) Other Breeds, Born & Bred (Sheep)

DENHAM, RACHEL M B

Class 771216020) Crossbred Meat Breeds, Ewe and One Produce (Sheep)

MC COY, SARAH L B
 MC COY, SARAH L B
 PAYNE, JORDAN C B
 CYRUS, AWBREY M B
 BERGUM, SHELBY L B
 POWELL, JANEL J B

Class 771216030) Crossbred Meat Breeds, 4-H Member's Flock (Sheep)

MC COY, SARAH L B
 BERGUM, SHELBY L B

Class 771216050) Crossbred Meat Breeds, Born & Bred (Sheep)

MC COY, SARAH L B
 CYRUS, AWBREY M B
 BERGUM, SHELBY L B

Class 771219020) Wether Dam, Producing Ewe & One Produce (Sheep)

GRIFFITHS, MICHELE N B
 VALLIE, MARISSA R B

Class 771219030) Wether Dam, 4-H Member's Flock (Sheep)

DIXON, KELSEY M GC, B
 GRIFFITHS, MICHELE N RG, B

Class 771219050) Wether Dam, Born & Bred (Sheep)

GRIFFITHS, MICHELE N GC, B
 PAYNE, JORDAN C RC, B

Class 771300000) Market Lamb (Sheep)

HUNT, LESLIE C CH, B
 DIXON, KELSEY M RC, B
 ALBERS, MEGAN F B
 BRANT, BILLY L B
 BRATTON, CALEB R B
 DEMEYER, MORGAN E B
 DENHAM, RACHEL M B
 HUNT, NATHAN S B
 KRUSE, HALEY A B
 LANGELIERS, CHASE R B
 LANGELIERS, JORDYN L B
 MARICLE, MIRANDA L B

MC ELWEE, JORDAN T B
 MOSS, ALLISON M B
 MOSS, ELIZABETH B B
 MOSS, GRANT W B
 SCOTT, KAYLYN S B
 WHITT, KATY B
 WHITT, KELLY A B
 WILLIAMS, KATY J B
 KOOKER, PAIGE A B
 AAMODT, MALLORY J B
 AAMODT, RILEY J B
 CHAVEZ, JADE L B
 LONGBOTHAM, SYDNEY D B
 MAYA, TRENTON M B
 MYERS, COLTER X B
 PLESS, LARISSA A B
 SAZAMA, CHLOEE E B
 SEALEY, JESSIE R B
 WYSE, TAYLOR A B
 YOUNG, MARK W B
 YOUNG, MICHELLE L B
 YOUNG, SCOTT M B
 YOUNG, SEAN C B
 ROBERTS, CALEB D B
 ROBERTS, MICAH J B
 ALLEN, MADISON B
 BAKER, BAILEIGH P B
 BAKER, RILEIGH M B
 BERNARD, TAYLOR S B
 CYRUS, GATLIN B B
 CYRUS, MICKAELA L B
 CYRUS, MORGAN J B
 EELLS, BRYSON L B
 EELLS, CORWIN D B
 GRIFFITHS, MICHELE N B
 HATCHELL, ZAKARY T B
 JENSEN, ASHLEIGH N B
 JENSEN, JESSICA N B
 LUTHER, CHARLES L B
 MACKENZIE, CATHERINE C B
 MACKENZIE, DAVID T B
 MC COY, SARAH L B
 PAYNE, GABE D B
 SMITH, KAITLIN N B
 VALLIE, MARISSA R B
 WHIPPLE, ABBIE M B
 WILSON, BRENT J B
 CYRUS, ALEXANDER B B
 CYRUS, AWBREY M B
 BERGUM, SHELBY L B
 CASE, LUKE A B
 FULLER, DANIELLE C B
 MYERS, JESSICA L B
 POWELL, JANEL J B
 POWELL, TAYLOR M B
 DAVIS, KATLIN A R
 GOODWIN, CHLOE A R
 NEWTON, CHANDRA S R
 NEWTON, MITCHELL L R
 ROTHBALLER, HALEY N R
 ROTHBALLER, HAYDEN R R
 CYRUS, WILLIAM M R
 JOHNSON, QUINTEN D R
 JOHNSON, STEPHEN G R

Class 771402000) Columbia Wool (Sheep)

CYRUS, MICKAELA L GC, CH, B
 CYRUS, MORGAN J RC, B

Class 771405000) Hampshire

FAIR RESULTS 2008

Wool (Sheep)

BERGUM, SHELBY L CH, B

Class 771407000) Romney Wool (Sheep)

MURRAY, ABAGAIL D RG, CH, B

Class 771410000) Suffolk Wool (Sheep)

BERGUM, SHELBY L CH, B
MC COY, SARAH L RC, B

Class 771412000) Crossbred (White Face) Wool (Sheep)

DENHAM, RACHEL M CH, B

Class 771413000) Crossbred (Black Face) Wool (Sheep)

MC COY, SARAH L CH, B
SMITH, KAITLIN N RC, B

Class 771414000) Colored Fleece (any breed or cross) (Sheep)

DENHAM, RACHEL M CH, B
MURRAY, ABAGAIL D RC, B

Class 771500000) Sheep, Showmanship, Novice (Sheep)

ALBERS, MEGAN F CH, B
SAZAMA, CHLOEE E RC, B
HAKALA, KATIE S B
PLESS, LARISSA A B
BERNARD, TAYLOR S B
GOODWIN, CHLOE A B
HATCHELL, ZAKARY T B
LEE, KATIE N B
NEWTON, CHANDRA S B
NEWTON, MITCHELL L B
JOHNSON, STEPHEN G B
POWELL, TAYLOR M B

Class 771500001) Sheep, Showmanship, Junior (Sheep)

MOSS, ELIZABETH B RG, CH, B
WHIPPLE, ABBIE M RC, B
BRANT, BILLY L B
DEMEYER, MORGAN E B
HUNT, NATHAN S B
KRUSE, HALEY A B
LANGELIERS, CHASE R B
LANGELIERS, JORDYN L B
MARICLE, MIRANDA L B
MC ELWEE, JORDAN T B
WHITT, KATY B
AAMODT, MALLORY J B
LONGBOTHAM, SYDNEY D B
YOUNG, MARK W B
YOUNG, SEAN C B
ROBERTS, CALEB D B
BAKER, RILEIGH M B
CYRUS, GATLIN B B

EELLS, BRYSON L B
LUTHER, CHARLES L B
MC COY, TRYSTAN M B
MURRAY, ABAGAIL D B
PAYNE, GABE D B
ROTHBALLER, HALEY N B
CYRUS, ALEXANDER B B
BERGUM, SHELBY L B
CASE, LUKE A B
JOHNSON, QUINTEN D B

Class 771500002) Sheep Showmanship, Intermediate (Sheep)

YOUNG, MICHELLE L CH, B
JENSEN, JESSICA N RC, B
BRATTON, CALEB R B
MOSS, ALLISON M B
MOSS, GRANT W B
SCOTT, KAYLYN S B
WHITT, KELLY A B
WILLIAMS, KATY J B
KOOKER, PAIGE A B
AAMODT, RILEY J B
MYERS, COLTER X B
SEALEY, JESSIE R B
WYSE, TAYLOR A B
ALLEN, MADISON B
BAKER, BAILEIGH P B
CYRUS, MICKAELA L B
CYRUS, MORGAN J B
EELLS, CORWIN D B
GRIFFITHS, MICHELE N B
JENSEN, ASHLEIGH N B
MACKENZIE, CATHERINE C B
MACKENZIE, DAVID T B
MC COY, SARAH L B
ROTHBALLER, HAYDEN R B
SMITH, KAITLIN N B
VALLIE, MARISSA R B
WILSON, BRENT J B
CYRUS, WILLIAM M B
FULLER, DANIELLE C B
POWELL, JANEL J B

Class 771500003) Sheep Showmanship, Senior (Sheep)

HUNT, LESLIE C GC, CH, B
PAYNE, JORDAN C RC, B
DENHAM, RACHEL M B
CHAVEZ, JADE L B
DAVIS, KATLIN A B
MAYA, TRENTON M B
YOUNG, SCOTT M B
DIXON, KELSEY M B
CYRUS, AWBREY M B
MYERS, JESSICA L B

SWINE

Class 781106010) Crossbred, March / May Gilt (Swine)

CRAIG, CHAWNDR A F B

Class 781106020) Crossbred, February Gilt (Swine)

GRUDT, KARLA I CH, B
TITTLE, WADE A RC, B
BELL, MCKENZIE A B

PAGE, KASSI J B
KRATZ, AMANDA M B
MC COY, TRYSTAN M B
SEVERSON, JESSICA M B
CRAIG, CHAWNDR A F R
CRAIG, COLE L R
MYERS, TYLER J R
ORR, CASSY L R

Class 781200020) Production Record Class (sow at home), Gilt shown (Swine)

GRUDT, KARLA I CH, B
SEVERSON, JESSICA M RC, B

Class 781300000) Market Hog (Swine)

BACHMAN, KADE J RC, B
BARBER, ABBY R B
BUEHNER, RACHEL A B
CANT, MIKAYLA M B
CANT, SAMANTHA K B
CRABTREE, MORGAN N B
CRANSTON, ABBY D B
CRANSTON, CLINTON W B
DE ALICANTE, HANNAH L B
DURFEE, BRANDICE W B
FALCO, LOGAN J B
FRIESNER, MARISA L P B
GOETZ, HAILEY K B
GOETZ, JESSIE L B
GOETZ, TAYLOR J B
GRUDT, KARLA I B
HOOD, MADISON J B
KELLY, JAMIE A B
KING, GARRET M B
LAIDLAW, BRITTANY A B
LARSEN, SERRON L B
LAUGHLIN, ALEXA J B
LOVISON, BRETT J B
LUNDQUIST, KEELAN R B
MACWHORTER, LAURIE M B
MARTIN, MACIE L B
MARTIN, MADISON L B
MC CADDEN, BILLY R B
MC GRATH, MATTHEW F B
MC PEAKE, LINDSEY T B
NIPPER, MORGAN E B
OSBORN, BRITTNEY K B
PALACIO, MARI T B
PENINGTON, BRETT R B
POBOISK, JADE D B
ROBERTSON, TYLER L B
SAPPINGTON, KATIE E B
SCHUMACHER, CODY R B
SELL, KIANA S B
SELL, KYIA S B
SLOTER, HENNESSEY M B
SPENCER, SALLY N B
WARREN, J D B
WELLS, KYLE K B
WOLFE, BREANNE R B
WRIGHT, KEVIN H B
DENNIS, SYDNI L B
ANDERSON, ZALE H B
GARRETT, ANDREW S B
HARRISON, BEN B
PICKERING, EMILY A B
AABY, CASEY L B
ABBAS, J D B

FAIR RESULTS 2008

ABBAS, SHELBY R	B	BATES, CHARISA C	R	Class 781400100) Swine, Born & Bred (Swine)	
BUETTNER, JORDAN A	B	BATES, CHRYSYAL K	R	GRUDT, KARLA I	CH, B
CARRELL, MATT P	B	HARRISON, TRAVIS W	R	SEVERSON, JESSICA M	RC, B
CARTER, ALEC R	B	HOLLINGER, SAMANTHA L	R	FORMAN, ELI C	B
CARTER, BRADLEY P	B	MARSH, SAMANTHA J	R	TITTLE, WADE A	B
DIXON, BRENDAN K	B	MASSINGALE, SAMANTHA A	R	Class 781500000) Swine Showmanship, Novice (Swine)	
DUNLAP, MATT D	B	WILSON, THORIN S	R	BELL, BRADEN A	B
FARRUGGIA, JOEY M	B	WILSON, TRISTAN F	R	BRECKEL, EMYLIA R	B
FISHER, CASSIDY L	B	WOLF, BRENDEN L	R	CANT, MIKAYLA M	B
FISHER, SAMANTHA L	B	MARTIN, ZANE R	R	CANT, SAMANTHA K	B
GARR, JAMIE L	B	BATES, HALIE E	R	FRIESNER, MARISA L P	B
GORMAN, TIM H	B	EVANS, MICHAELA D	R	GARCIA, AERIANNA R	B
HAMMACK, HANNAH M	B	FARRUGGIA, BENJAMIN D	R	LAIDLAW, BRITTANY A	B
HENDRICKS, JUSTINE D	B	FORMAN, ELI C	R	LARSEN, SERRON L	B
HUNTER, JOSH D	B	GRIFFITHS, ANDREA E	R	LAUGHLIN, CALVIN J	B
INGLIS, KRISTEN A	B	HENDRICKS, EMMA J	R	LEAHY, TYE	B
KEYTE, KIRSTIN M	B	HENRY, CHANCE G	R	LEE, OLEN T	B
KROSKE, AUSTIN L	B	HENRY, NASH J	R	MC PEAKE, LINDSEY T	B
MC GHEHEY, CODY R	B	HERSCHBACH, ALEXANDER R	R	MUNROE, ERIN M	B
MC GHEHEY, ROSLYNN A	B	HERSCHBACH, ROD D	R	OSBORN, BRITTNEY K	B
SIMPSON, CODY H	B	HUNTER, JERAMY W	R	SHERFIELD, STEPHANIE L	B
SIMPSON, TRAVIS J	B	KENNY, BRIGITTE D	R	SHERFIELD, WILLIAM(DANNY) D	B
THOMAS, KATHERYN G	B	KEYTE, ALYSSA P	R	TILLER, SAM R	B
THOMAS, KELSEY M	B	KING, GARRETT M	R	DENNIS, SYDNI L	B
TITTLE, WADE A	B	KRATZ, AMANDA M	R	BATES, CHARISA C	B
DUMMITT, KYLIE M	B	KRATZ, KYLE L	R	MASSINGALE, SYDNEY J	B
ERICKSON, RYLEA L	B	LASH, BRENNAN	R	WILSON, TRISTAN F	B
GIBBS, SIERRA A	B	LASH, BROCK A	R	HERSCHBACH, ALEXANDER R	B
HAIGH, HALEIGH M	B	LASH, ZOE M	R	KEYTE, ALYSSA P	B
JACKSON, KELSEY J	B	MARCUM, CRAIG T	R	KEYTE, KIRSTIN M	B
ORR, CASSY L	B	MARTIN, ELLIOTT C	R	MARTIN, ELLIOTT C	B
SIMPSON, NAUTIQUE D	B	MC COY, TRYSTAN M	R	MC GARRY, LUCIN E	B
SIMPSON, RHETT L	B	ROLLINS, REECE L	R	ROLLINS, JADE R	B
BELL, BRADEN A	R	SEVERSON, JESSICA M	R	WELLMAN, LAUREN E	B
BELL, MCKENZIE A	R	STILES, THAD H	R	WELLMAN, LAUREN E	B
BRECKEL, EMYLIA R	R	TITTLE, WYATTE J	R	CROCKETT, BRITNEY E	B
BRECKEL, MONTANA	R	WELLETTE, KOURTNEY C	R	GIBBS, SIERRA A	B
BUEHNER, JACOB K	R	WELLMAN, LAUREN E	R	JOHNSON, BAYLEA M	B
CRAIG, CHAWNDR A F	R	WILLIAMS, KODY T	R	JOHNSON, HALEA S	B
CRAIG, COLE L	R	GREENE, MADDIE R	R	WILLIAMS, REMINGTON L	B
FORD, EMILY E	R	HERMANN, BRENT A	R		
FORD, PARLEY R	R	HUEBNER, DAN A	R	Class 781500001) Swine Showmanship, Junior (Swine)	
FORD, PORTER M	R	ARNETT, DANYELE I	R	LASH, ZOE M	CH, B
FOSTER, JESSICA M	R	CROCKETT, BRITNEY E	R	ABBAS, SHELBY R	RC, B
FRONABARGER, KADY B	R	DUNN, BRITTNEY R	R	BACHMAN, KADE J	B
GARCIA, AERIANNA R	R	DUNN, MAKINAH L	R	BARBER, ABBY R	B
GARCIA, BREANNA L	R	JACKSON, JEREMY M	R	BRECKEL, MONTANA	B
HALSTEAD, JESSICA	R	JOURNAGAN, JUSTIN W E	R	BUEHNER, JACOB K	B
HEIMULLER, NICOLE M	R	HANSEN, HUNTER D	W	CRAIG, CHAWNDR A F	B
HOOD, DELANEY J	R	MC CADDEN, MEGAN E	W	DE ALICANTE, HANNAH L	B
HUBLER, DEREK	R	NELSON, TRAVIS M	W	FALCO, LOGAN J	B
LAUGHLIN, CALVIN J	R	PAGE, KASSI J	W	FORD, EMILY E	B
LAUGHLIN, SKYLER J	R	POTTER, JACOB L	W	FORD, PORTER M	B
LEAHY, FINN C	R	SHERFIELD, STEPHANIE L	W	FRONABARGER, KADY B	B
LEAHY, TYE	R	SHERFIELD, WILLIAM(DANNY)	W	GARCIA, AERIANNA R	B
LEE, OLEN T	R	MASSINGALE, SYDNEY J	W	GOETZ, HAILEY K	B
MC KINNEY, MADISON J	R	BECHARD, JUSTIN T	W	GOETZ, JESSIE L	B
MOORE, CAMERON G	R	HELIKSON, TAYLOR P	W	HANSEN, HUNTER D	B
MUNROE, ELIZABETH K	R	HERLOCKER, PAIGE A	W	HEIMULLER, NICOLE M	B
MUNROE, ERIN M	R	MC GARRY, LUCIN E	W	HOOD, DELANEY J	B
MURPHY, KATIE M	R	MORRISON, JAYCEE R	W	KELLY, JAMIE A	B
NELSON, RYAN M	R	ROLLINS, JADE R	W	KING, GARRET M	B
O'NEAL, NATHAN J	R	WILLIAMS, KASEY P	W	MARTIN, MADISON L	B
SHELTON, MIKAYLA A	R	GREENE, SPENCER A	W	MC KINNEY, MADISON J	B
SHELTON, RILEY W	R	JOHNSON, BAYLEA M	W	MURPHY, KATIE M	B
STEVENS, KAILEY M	R	JOHNSON, HALEA S	W	NELSON, RYAN M	B
SYLVESTER, CLINT N	R	SPEAS, MCKAYLEE R	W	PENNINGTON, BRETT R	B
SYLVESTER, LISA N	R	WILLIAMS, REMINGTON L	W		
TILLER, SAM R	R				
TILLER, SHELBY M	R				
WARREN, NATALIE T	R				
ANDERSON, ZANE M	R				
BATES, ALEC B	R				
		Class 781300010) Feeder Hog, Lightweight (Swine)			
		BARTHOLOMEW, STEVEN R	B		

FAIR RESULTS 2008

POBOISK, JADE D B
 SCHUMACHER, CODY R B
 SHELTON, MIKAYLA A B
 SHELTON, RILEY W B
 SYLVESTER, LISA N B
 TILLER, SHELBY M B
 WARREN, NATALIE T B
 WOLFE, BREANNE R B
 WRIGHT, KEVIN H B
 BATES, ALEC B B
 HARRISON, BEN B
 MASSINGALE, SAMANTHA A B
 WILSON, THORIN S B
 WOLF, BRENDEN L B
 UMBARGER, NICK J B
 BATES, HALIE E B
 CARTER, ALEC R B
 DIXON, BRENDAN K B
 EVANS, MICHAELA D B
 FARRUGGIA, BENJAMIN D B
 GORMAN, TIM H B
 GRIFFITHS, ANDREA E B
 HENDRICKS, EMMA J B
 HENRY, NASH J B
 KENNY, BRIGITTE D B
 KRATZ, KYLE L B
 MC COY, TRYSTAN M B
 MC GHEHEY, ROSLYNN A B
 ROLLINS, REECE L B
 SIMPSON, CODY H B
 STILES, THAD H B
 TITTLE, WYATTE J B
 WELLETTE, KOURTNEY C B
 ARNETT, DANYELE I B
 DUMMITT, KYLIE M B
 DUNN, MAKINAH L B
 HAIGH, HALEIGH M B
 JOURNAGAN, JUSTIN W E B
 SIMPSON, RHETT L B

Class 781500002) Swine Showmanship, Intermediate (Swine)

CRABTREE, MORGAN N CH, B
 WELLS, KYLE K RC, B
 BARTHOLOMEW, STEVEN R B
 BELL, MCKENZIE A B
 BUEHNER, RACHEL A B
 CRAIG, COLE L B
 CRANSTON, ABBY D B
 DURFEE, BRANDICE W B
 FORD, PARLEY R B
 FOSTER, JESSICA M B
 GARCIA, BREANNA L B
 GOETZ, TAYLOR J B
 HALSTEAD, JESSICA B
 HOOD, MADISON J B
 HUBLER, DEREK B
 LAUGHLIN, ALEXA J B
 LAUGHLIN, SKYLER J B
 LEAHY, FINN C B
 LOVISON, BRETT J B
 MACWHORTER, LAURIE M B
 MARTIN, MACIE L B
 MC CADDEN, BILLY R B
 MC CADDEN, MEGAN E B
 MC GRATH, MATTHEW F B
 MUNROE, ELIZABETH K B
 NELSON, TRAVIS M B
 O'NEAL, NATHAN J B
 PAGE, KASSI J B
 PALACIO, MARI T B
 POTTER, JACOB L B

ROBERTSON, TYLER L B
 SAPPINGTON, KATIE E B
 SELL, KIANA S B
 SPENCER, SALLY N B
 SYLVESTER, CLINT N B
 WARREN, J D B
 ANDERSON, ZALE H B
 ANDERSON, ZANE M B
 GARRETT, ANDREW S B
 HARRISON, TRAVIS W B
 HOLLINGER, SAMANTHA L B
 MARTIN, ZANE R B
 AABY, CASEY L B
 ABBAS, J D B
 CARRELL, MATT P B
 CARTER, BRADLEY P B
 FISHER, CASSIDY L B
 FORMAN, ELI C B
 GARR, JAMIE L B
 HAMMACK, HANNAH M B
 HELIKSON, TAYLOR P B
 HENDRICKS, JUSTINE D B
 HENRY, CHANCE G B
 HERLOCKER, PAIGE A B
 HUNTER, JOSH D B
 INGLIS, KRISTEN A B
 KING, GARRETT M B
 KROSKE, AUSTIN L B
 LASH, BRENNAN B
 LASH, BROCK A B
 MARCUM, CRAIG T B
 MC GHEHEY, CODY R B
 MORRISON, JAYCEE R B
 SIMPSON, TRAVIS J B
 THOMAS, KATHERYN G B
 THOMAS, KELSEY M B
 TITTLE, WADE A B
 WILLIAMS, KODY T B
 GREENE, SPENCER A B
 HUEBNER, DAN A B
 DUNN, BRITNEY R B
 ERICKSON, RYLEA L B
 JACKSON, KELSEY J B
 MYERS, TYLER J B
 ORR, CASSY L B
 SIMPSON, NAUTIQUE D B

Class 781500003) Swine Showmanship, Senior (Swine)

CRANSTON, CLINTON W CH, B
 LUNDQUIST, KEELAN R RC, B
 GRUDT, KARLA I B
 MOORE, CAMERON G B
 NIPPER, MORGAN E B
 SELL, KYIA S B
 SLOTER, HENNESSEY M B
 STEVENS, KAILEY M B
 BATES, CHRYSYAL K B
 MARSH, SAMANTHA J B
 PICKERING, EMILY A B
 BECHARD, JUSTIN T B
 BUETTNER, JORDAN A B
 DUNLAP, MATT D B
 FARRUGGIA, JOEY M B
 FISHER, SAMANTHA L B
 HERSCHBACH, ROD D B
 HUNTER, JERAMY W B
 KRATZ, AMANDA M B
 SEVERSON, JESSICA M B
 WILLIAMS, KASEY P B
 GREENE, MADDIE R B
 HERMANN, BRENT A B

JACKSON, JEREMY M B
 SPEAS, MCKAYLEE R B

DAIRY GOAT
Class 791101070) Alpine, Mature Doe - 3 yrs and under 5 yrs (Goats - Dairy)

REEVES, NAOMI D CH, B

Class 791102010) La Mancha, Junior Doe Kid (Goats - Dairy)

SCHINKEL, ANNIKA T.C. B
 HACKETT, RILEY T B

Class 791102030) La Mancha, Senior Doe Kid (Goats - Dairy)

HACKETT, RILEY T CH, B
 SCHINKEL, ANNIKA T.C. B

Class 791102040) La Mancha, Dry Yearling Doe (Goats - Dairy)

SCHINKEL, ANNIKA T.C. RC, B

Class 791102050) La Mancha, Milking Yearling Doe (Goats - Dairy)

HACKETT, RILEY T B

Class 791102060) La Mancha, Mature Two Year Old Doe (Goats - Dairy)

SCHINKEL, ANNIKA T.C. B

Class 791102070) La Mancha, Mature Doe - 3 yrs and under 5 yrs (Goats - Dairy)

HACKETT, RILEY T RG, RC, B
 HACKETT, RILEY T CH, B

Class 791102080) La Mancha, Mature Doe - 5 yrs and under 7 yrs (Goats - Dairy)

HACKETT, RILEY T B

Class 791103030) Nubian, Senior Doe Kid (Goats - Dairy)

HACKETT, RILEY T RG, CH, B

Class 791103060) Nubian, Mature Two Year Old Doe (Goats - Dairy)

HACKETT, RILEY T GC, CH, B

Class 791104040) Oberhasli,

FAIR RESULTS 2008

Dry Yearling Doe (Goats - Dairy)

BARSS, PASHA L GC, CH, B

Class 791105050) Saanen, Milk- ing Yearling Doe (Goats - Dairy)

GUERIN, ELIZA L RG, RC, B

Class 791105070) Saanen, Ma- ture Doe - 3 yrs and under 5 yrs (Goats - Dairy)

GUERIN, LUKE P GC, CH, B

Class 791109010) Other Breeds, Junior Doe Kid (Goats - Dairy)

HOPP, MICHAEL J CH, B
HOPP, MICHAEL J B

Class 791109030) Other Breeds, Senior Doe Kid (Goats - Dairy)

KELLER, ADRIAN J B
KELLER, ADRIAN J B

Class 791109070) Other Breeds, Mature Doe - 3 yrs and under 5 yrs (Goats - Dairy)

HOPP, MICHAEL J B

Class 791109080) Other Breeds, Mature Doe - 5 yrs and under 7 yrs (Goats - Dairy)

HOPP, MICHAEL J RC, B

Class 791109090) Other Breeds, Aged Doe - 7 yrs and older (Goats - Dairy)

HOPP, MICHAEL J GC, CH, B

Class 791110010) Dairy Goat, Unregistered, Jr Doe Kid (Goats - Dairy)

REEVES, NAOMI D CH, B

Class 791110040) Dairy Goat, Unregistered, Dry Yearling Doe (Goats - Dairy)

WILSON, DAJA M RC, B

Class 791200040) Dairy Goats, Club Herd (Goats - Dairy)

GOATS GALORE, CH, B

Class 791200050) Dairy Goats, Bred & Born (Goats - Dairy)

GUERIN, ELIZA L B
HOPP, MICHAEL J B
HOPP, MICHAEL J B
SCHINKEL, ANNIKA T.C. B
SCHINKEL, ANNIKA T.C. B
HACKETT, RILEY T B
HACKETT, RILEY T B

Class 791202020) LaMancha, Dam and Daughter (Goats - Dairy)

HACKETT, RILEY T CH, B
SCHINKEL, ANNIKA T.C. B
HACKETT, RILEY T B

Class 791202030) LaMancha, 4-H Member's Dairy Goat Herd (Goats - Dairy)

SCHINKEL, ANNIKA T.C. B
HACKETT, RILEY T B

Class 791203020) Nubian, Dam and Daughter (Goats - Dairy)

HACKETT, RILEY T B

Class 791209020) Dairy Goat, Unregistered, Dam & Daughter (Goats - Dairy)

HOPP, MICHAEL J B
HOPP, MICHAEL J B

Class 791209030) Dairy Goat, Unregistered, Member's Herd (Goats - Dairy)

HOPP, MICHAEL J CH, B

Class 791500001) Dairy Goats, Showmanship, Junior (Goats - Dairy)

SCHINKEL, ANNIKA T.C. CH, B
WILSON, DAJA M RC, B
CAMPBELL, KAITLIN M B
GUERIN, ELIZA L B
REEVES, NAOMI D B
KELLER, ADRIAN J B

Class 791500002) Dairy Goats, Showmanship, Intermediate (Goats - Dairy)

HACKETT, RILEY T RG, CH, B
BARSS, PASHA L RC, B
GUERIN, LUKE P B

Class 791500003) Dairy Goats, Showmanship, Senior (Goats - Dairy)

HOPP, MICHAEL J GC, CH, B

Class 791700000) Carcass Con- test, Goats (Goats - Dairy)

HACKETT, RILEY T B

Class 791700101) Dairy Goats, Obstacle Course, Junior (Goats - Dairy)

CAMPBELL, KAITLIN M CH, B
WILSON, DAJA M RC, B

MEAT GOAT

Class 795100010) Meat Goats, Doe Kid, Born April 1 - June 30 (Meat Goats - SF)

REEVES, NAOMI D B

Class 795100050) Meat Goats, Yearling Doe, Born Jan. 1 - April 30 (Meat Goats - SF)

HACKETT, RILEY T RC, B
MASSINGALE, SYDNEY J B

Class 795100060) Meat Goats, Mature Doe, born in 2005 (Meat Goats - SF)

HACKETT, RILEY T CH, B

Class 795300000) Market Goat (Meat Goats - SF)

HUBLER, MELISSA A GC, CH, B
SCHINKEL, ANNIKA T.C. RG, RC, B
KRUSE, RYAN J B
FOSTER, MEGAN S B
REEVES, NAOMI D B
HACKETT, RILEY T B
MAZUR, CALEB B B
MAZUR, NATHAN B
PETERS, AARON D B

Class 795500001) Meat Goats, Showmanship, Junior (Goats - Market)

SCHINKEL, ANNIKA T.C. CH, B
FOSTER, MEGAN S RC, B
MASSINGALE, SAMANTHA A B
MASSINGALE, SYDNEY J B
REEVES, NAOMI D B
KRUSE, RYAN J B

Class 795500002) Meat Goats, Showmanship, Intermediate (Meat Goats - SF)

HACKETT, RILEY T RG, CH, B
HUBLER, MELISSA A RC, B

Class 795500003) Meat Goats, Showmanship, Senior (Meat

FAIR RESULTS 2008

Goats - SF)

MAZUR, CALEB B
PETERS, AARON D

GC, CH, B
RC, B

PYGMY GOAT

Class 793200010) Pygmy Goats, Dam and Produce (Goats - Pygmy)

HOPP, MICHAEL J
WALKER, KRAELYN

B
B

Class 793500001) Pygmy Goats, Showmanship, Junior (Goats - Pygmy)

WALKER, KALEB S

B

Class 793500002) Pygmy Goats, Showmanship, Intermediate (Goats - Pygmy)

WALKER, KRAELYN

B

Class 793500003) Pygmy Goats, Showmanship, Senior (Goats - Pygmy)

HOPP, MICHAEL J

GC, CH, B

FIBRE GOAT

Class 792200010) Fiber Goats, Doe Kid (Goats - Angora)

BROWN, MONICA E

B

Class 792200020) Fiber Goats, Doe, 1 & 2 Yrs (Goats - Angora)

BROWN, MONICA E
BROWN, MONICA E

CH, B
B

Class 792200040) Fiber Goats, Wether, 2 yrs & under (Goats - Angora)

BROWN, MONICA E

RC, B

Class 792210010) Fiber Goats, Dam & Produce (Goats - Angora)

BROWN, MONICA E

B

Class 792210020) Fiber Goats, Members Herd (Goats - Angora)

BROWN, MONICA E

B

Class 792420110) Fleeces, Colored Mohair, Kid (Goats - Angora)

BROWN, MONICA E

CH, B

Class 792420130) Fleeces, Colored Mohair, Wether (Goats - Angora)

BROWN, MONICA E

R

Class 792500013) Fiber Goats, Showmanship, Senior (Goats - Angora)

BROWN, MONICA E

GC, CH, B

LLAMAS

Class 799300001) Llamas/ Alpacas, Jr Handler, Jr (Llama)

CURTIS, JED M

B

Class 799300002) Llamas/ Alpacas, Jr Handler, Int (Llama)

STURDY, JENNIFER A
CURTIS, CARLEIGH M
STREETER, KAYLEE J

RC, B
B
R

Class 799300003) Llamas/ Alpacas, Jr Handler, Sr (Llama)

PETERS, AARON D
BROWN, MONICA E

CH, B
B

Class 799300310) Llamas/ Alpacas, Obstacle Course (Llama)

PETERS, AARON D
STREETER, KAYLEE J
CURTIS, CARLEIGH M
BROWN, MONICA E
CURTIS, JED M
STURDY, JENNIFER A

CH, B
RC, B
B
R
R
R

Class 799300410) Llamas/ Alpaca, Public Relations (Llama)

BROWN, MONICA E
PETERS, AARON D
CURTIS, JED M
STURDY, JENNIFER A
STREETER, KAYLEE J
CURTIS, CARLEIGH M

CH, B
RC, B
B
B
R
R

Class 799300510) Llama/Alpaca, Pack Obstacle Course (Llama)

STURDY, JENNIFER A
PETERS, AARON D
BROWN, MONICA E
CURTIS, CARLEIGH M
CURTIS, JED M

CH, B
RC, B
B
R
R

Class 799300610) Llamas/ Alpaca, Costume (Llama)

STREETER, KAYLEE J
CURTIS, JED M

B
B

Class 799401000) Llamas/ Alpaca, Fiber (Llama)

STURDY, JENNIFER A
CURTIS, JED M

CH, B
RC, B

Class 799500001) Llamas/ Alpaca, Showmanship, Junior (Llama)

CURTIS, JED M

CH, B

Class 799500002) Llamas/ Alpaca, Showmanship, Intermediate (Llama)

STREETER, KAYLEE J
STURDY, JENNIFER A
CURTIS, CARLEIGH M

GC, CH, B
RC, B
B

Class 799500003) Llamas/ Alpaca, Showmanship, Senior (Llama)

BROWN, MONICA E
PETERS, AARON D

RG, CH, B
RC, B

CHARACTER COUNTS!

Reporting Isn't "Tattling"

If you see something that is inappropriate, against the rules, or unsafe, you need to tell someone. As a leader or a parent, it may be something you can just correct with a quick "hey crew, don't do that." There's no need to let anyone else know you fixed the problem. However, if the behavior continues or the response you get is inappropriate, let someone else know—Candi, Dave or a superintendent.

If someone is cheating or not playing by the rules, let a superintendent know. Dave, Candi and the superintendents will work hard to keep your tip or information anonymous. We can't always stop folks from surmising who the information came from—but if we don't have to, we won't tell them who we heard from.

Our program will be at its best if everyone is playing by the same rules. Please respect our program and the youth we are here to help teach, enough, to let us know if someone needs a bit of extra help to understand what the expectations are. It's important, really! ccb

Lessons From a Carrot, Egg, and Coffee Bean

Let's face it. Personal trauma and tragedy – like illness or injury, death of a loved one, loss of a job, or an unexpected breakup of a relationship – are unavoidable. The question is: Will these private calamities erode our capacity to be happy or help us become stronger and better able to live a meaningful and fulfilling life?

Consider how differently carrots, eggs, and coffee beans are affected by the extreme adversity of being boiled.

Like the carrot, adversity can soften us. We can emerge more flexible, understanding, compassionate, and grateful or we can let our life spirit turn into a soft mush. Like the egg, the boiling water can make us harder, stronger, tougher, and wiser or we can become more cynical, pessimistic, callous, and inaccessible. And like the coffee bean, we can willingly transform our lives into something better or simply lose ourselves completely.

We can't control what happens to us, but we have a lot to say about how we react and, therefore, what happens in us. The first step to turning adversity into advantage is to get out of the hot water as quickly as possible. Don't dwell on catastrophe. Grieve, but move on. Don't define your life by misfortune.

Second, force yourself to move forward. Draw on inner strengths, the people who love you, and your faith to help you transform your life into something better. Formulate a vision of a more purposeful life filled with people and experiences that will help you become more fulfilled.

This is Michael Josephson reminding you that character counts.

New Leader Training

New leader applicants will be required to attend new leader training and an orientation with a mentor to reach 'provisional' status. A follow up of 3 hours additional educational clinics/classes/programs (not advisory meetings) in the following 12 months are required in order to reach official 'leader' status.

Here are some minimum expectations of a 4-H leader.

- ⇒ Demonstrate good character, sportsmanship, and integrity.
- ⇒ Enjoy the youth.
- ⇒ Know and follow the rules.
- ⇒ **Participate!**
 - Attend or be represented at advisory committee meetings specific to your project area. (This responsibility can be delegated – but it's in your best interest and your club's to attend)
 - Hold a minimum of 8 meetings a year. (Belonging is an important part of the 4-H program)
 - Plan on being at the fair as much as possible. (We know you have a job, family, etc. AND we know your presence at the fair is an important part of your club's success. This responsibility can be delegated, but it's important.
- ⇒ Educate yourself and/or other leaders (youth/adult) in your club so you have information about record books, presentations, or other events that may or may not be specific to your project area. Attend offered trainings.
- ⇒ Ask questions! Never hesitate to contact your mentor leader, a superintendent, or the office to help answer any questions or to work with you to problem solve, no matter what the issue.
- ⇒ Submit a quarterly calendar.
- ⇒ Meet appropriate deadlines.

New Leader Trainings:

- 1/22/09
- 3/12/09
- 4/9/09

Mentor Leader Trainings:

- 2/5/09

2008/2009 Advisory Committee Schedule

ALL AREAS: Horse, Dog, Small Animal, Livestock, Natural Resources, & Home Ec/ Expressive Arts

All meetings are Tuesday and begin at 6 pm with a short educational topic, followed by a general session, followed by project area meetings.

Tue, Oct 14, 2008	Tue, May 12, 2009
Tue, Jan 13, 2009	Tue, Jul 14, 2009
Tue, Mar 10, 2009	Tue, Sep 8, 2009
	Tue, Oct 13, 2009

All clubs are expected to have a representative at their related meeting. Thanks for your participation. ccb

What Can WE Do For You?

You're a new leader; now what kind of training do you want and need? Record Books, conflict resolution, running club meetings? We want to set up some fall and winter trainings, and we want them well-attended, worthwhile and to meet your needs.

Whether you are a new leader or an experienced leader, we want to provide training that will benefit you in your club and your life.

Help me, help you—call or Email with your ideas and suggestions, PLEASE!

Candi at 548-6088 or
Candi.Bothum@oreognstate.edu

Lee Side

(including ATV & Dirt Bike Info)

ATV and Dirt Bike Safety First Campaign

The first ATV safety awareness workshops for the middle schools were a tremendous success. More than 1,200 students participated in 45 minute lessons consisting of Power Point presentations and tour through the Oregon Parks and Recreation Department's ATV and Dirt Bike mobile education trailer.

Students participating in the program interact with presenters from 4-H, OPRD and the Central Oregon Motorcycle and ATV club. Students learned the least the needed to know to be safe while riding the ATV's and dirt bikes on public lands.

The program is being offered throughout the school year. Call Dave at 541-548-6088 if you would like to help deliver this very important program to youth in your community. djw



Top Gun—The 4-H Shotgun Club



Teen Staff News!!

New Teen Staff Applications

This year our applications for new Teen Staff members will be due **OCTOBER 31st!!** This is much sooner than they have been due in the past, so please spread the word!! Also new applicants must have a letter of recommendation from a 4-H leader, teacher, employer or other adult mentor. This is also a new and important part of the Teen Staff application process.

Tina

Tentative Teen Staff Meeting Schedule

Tuesday, November 4th, 2008

Thursday, January 8th, 2009

Monday, March 9th, 2009

Tuesday, May 5th, 2009

Keep your eyes on the newsletter or your e-mail for further details.

Tina

Teen Staff—Thank You!

Words can not express the appreciation I feel for the teen staff who helped at fair this year. Whether we needed an errand run, an extra pair of hands, supervision, or whatever—not far away was a young person willing and excited to do whatever they could to help. In case we forget to say so, you are all awesome—as a group and individually, really we appreciate you. You'll never know how much easier it makes our jobs knowing there's always someone to help with whatever needs to be done. In behalf of all the 4-H staff, to each of you along with the many adult volunteers, thank you for all your hard work and many helping hands at this year's fair. You all make it a success and you are truly appreciated.

"I learned that a great leader is a man who has the ability to get other people to do what they don't want to do and like it."

Harry Truman

Teen Staff News!!

DESCHUTES COUNTY 2008-09 VOLUNTEER TEEN STAFF APPLICATION

There are many aspects to being on the Teen Staff.

Please consider these requirements & expectations before filling out this application:

*You are in 7th – 12th grade.

NEW You have a letter of recommendation from a 4-H leader. A letter of recommendation will be required for all new Teen Staff members. If they are not a current 4-H member, a letter from a teacher, employer or other adult mentor will be accepted. May be e-mailed to: tina.hohman@oregonstate.edu

*You will be a leader to other 4-H members. Teen Staff members are expected to be examples of what 4-H strives for; to make the best better. It is your job to encourage other 4-H members to be the best they can be by your words and actions, as well as through teaching specific project skills to younger members.

*Planning and working at 4-H events. You are an important part of what makes Deschutes County 4-H successful. I want to have 4-H Teen Staff members take on the responsibility for planning and executing many of our public events, such as Gala, Larkspur Festival, Redmond Coffee Clatter, serving at the Central Oregon Symphony, and other events where you will be 4-H ambassadors while learning leadership skills!

*You will be a part of the Teen Staff “Family”. One of the definitions of family is “*People who share goals and values, have long-term commitments to one another, and reside usually in the same dwelling place.*” I want those who apply to Teen Staff to share the goals and values of 4-H, and to be committed to one another. And while we don’t actually live together, once you’ve spent a week at fair, you’ll feel like we all live “in the same dwelling place”!

*You will be a part of a 4-H Leadership project. This simply means keeping track of what you will learn and experience for your record book. (***There will be no project fee.***)

*You are willing to attend Teen Staff meetings and work at least two 4-H events between now and Sept. 30, 2008.

Name _____ Birth date: _____ Grade _____

Address _____ City/Zip _____

Home Phone: _____ Cell Phone: _____ Other: _____

E-Mail (**print carefully**) _____

4-H Project(s) _____ Years in 4-H _____

Parent/Guardian name(s)? _____

Parent/Guardian e-mail address? _____

T-shirt size: Adult - Sm _____ Med _____ Large _____ XL _____

Please remove the bottom part of this form and return it to:

Tina Hohman
Deschutes County Extension
3893 SW Airport Way
Redmond, OR 97756

Registration Deadline:
****October 31st, 2008****

Time is running out!

Noodles, Needles & Stuff

2008-09 Home Ec./Expressive Arts Dates to Add to Your Calendar!!

Oct	3	Fri	Record and scrap books due for record book competition in Extension office by 5 pm
	11	Sat	4-H Leader's Forum.
	14	Tue	Project Advisory Meeting (Formerly the Home Ec/Ex Arts Committee Meeting)
	25-27		COSA!
Nov	1	Sat	Leaders & Members Recognition Night! 6:30 pm, North Sister Building
Jan	13	Tue	Project Advisory Meeting (Formerly the Home Ec/Ex Arts Committee Meeting)
	22	Thur	New Leader Training, 6:30, Extension Office
	31	Sat	IDEA FAIR!
Feb	5	Thur	Mentor Training (Invitation only)
	14	Sat	COOKIE CAMP! North Sister, 9-6
	21-23		COSA!
Mar	10	Tue	Project Advisory Meeting
	12	Thur	New Leader Training, 6:30 , Extension Office
Apr	9	Thur	New Leader Training, 6:30 , Extension Office
	18	Sat	Presentations Contest, N. Sisters Building
May	1	Fri	Skills Contest, Redmond High
	2	Sat	Skills Contest, La Pine
	12	Tue	Project Advisory Meeting
June	6	Fri	Redmond Coffee Clatter
	24	Wed	Record Book check
	29	Mon	Record Book Check
July	2	Thur	Record Book Check
	7	Tues	Fashion Review, N. Sister Bldg. Final Record Book Check
	14	Tue	Project Advisory Meeting
	25	Sat	North Sister set up day!
	27	Mon	Fair Static Exhibit judging day
July 29-Aug 2			Deschutes County Fair!

Sew Cool in School!

You can still get
Butterick & McCall's
patterns for only .95c each!
But the process has changed!



Go to:

http://www.mccallpattern.com/list/sew_cool_in_school/page-1

This is where you can view all the patterns available at the sale price. Browse the collection of patterns and products, and make a note of what you would like to purchase. Then come to a committee meeting and give me your order, along with cash or check (made payable to DCLA) for the total amount of your order. Or you can mail me the information and the check. (3893 SW Airport Way, Redmond, OR 97756)

The order will be placed November 14th.

No late orders will be accepted.

I hope you will take advantage of this great deal!

New Art Class!

This new club for upper elementary through high school age 4-H'rs will give members the chance to create an art or visual journal and explore many different types of media. The lessons will incorporate elements and principles of design; art history; lots of exploration and even some field trips!



When's the first meeting?

Wed. Oct. 22nd, from 1:30-4:30 pm

Where?

3036 Yellow Ribbon Dr . Bend

If you are interested in this club or have Questions, call Kelley Salber at 971-570-6811.

Noodles, Needles & Stuff

What was the \$7 taken out of my Silent Auction Check?

Each auction item, silent or live, had a buyer's gift fee deducted from the total. This money goes to purchase the gifts that each buyer receives at the auction. I'm sorry that this information was not given to you ahead of time, it is my fault. I was unaware that this fee would be deducted from your check. Tina



New Leather Crafting Club!

Tom & Sheryl Katzke will be starting a new leather craft club this fall! If you are interested, please call the Extension office for more information.



Make it Yourself With Wool Contest

Join the fun, fashion and history of the 61st Oregon Make It With Wool Contest to be held Saturday, Dec. 6, 2008 at the Agate Beach Inn in Newport, OR.

The contest is open to all ages, pre-teen to adult. To enter, contestants must construct a wool garment made of 100% wool or a wool blend, with a minimum of 60% wool, sometime after January 1, 2008. Participants in 4-H are reminded that 2008 fair entries are eligible for the contest.

Contestants model their outfit for a panel of judges, and then present their garment for construction judging. Awards are presented following a Fashion Show held on Saturday evening, Dec. 6th. Prizes are awarded in all categories.

Winners of the Junior (age 13-16) and Senior (age 17-24) divisions receive an expense paid trip to compete in the National Make It with Wool

Finals sponsored by the American Sheep Industry Women, to be held January 21-25, 2009, in San Diego, CA, at the Marriott Mission Valley.

Entry forms and contest rules are available from Oregon Director, Maureen Krebs at (541) 422-7548 or eatlamb@wildblue.net, the office of Oregon Sheep Growers Association (503) 364-5462, or online: www.oregonmiww.com



Serving at COSA (Central Oregon Symphony)

Here are the dates for the Symphony this year. This is a great activity for your whole club. Call now to reserve your spot to serve at the symphony. The only requirements are black pants/skirt, a white shirt, and a smile

Sat, Oct. 25th 7:00 pm

Sun, Oct. 26th 1:30 pm (Full)

Mon, Oct. 27th 7:00 pm

But wait... We will also be serving for two concerts in Redmond on Sunday!

Redmond Community Concert Association

Sun. Oct 26th, 2:00 & 6:30

This event will be held at Redmond High School. I will need 4 or 5 4-H members for each concert. Dress requirements are the same as above.

For more information, or to reserve a spot for COSA or RCCA, contact Tina:

548-6088, ext. 7952

Tina.hohman@oregonstate.edu



New Online Publications

The **4-H Fiber Arts Project Guide** (4-H 7601) is now available online at the EESC 4-H publications website (<http://extension.oregonstate.edu/catalog/4h/4-h7601.html>)

Foods with an International Flavor Member Manual (4-H 9316) is now available only online at the EESC 4-H web page

(<http://extension.oregonstate.edu/catalog/4h/4-h9316.pdf>)

~ Helen Pease

Noodles, Needles & Stuff

Warm Up America!

If you've started working on your 7" x 9" squares for this year's Warm Up America afghans, keep making them! If you haven't started yet - it's a great way to practice your new knitting and crocheting skills. Make a couple squares to practice new stitches you will be learning this year and you'll be helping with a good cause too!! Maybe your club would like to complete an entire afghan this year? Be sure to get your finished squares and afghans to Tina before January 2nd! (Questions? 548-6088)

Go to the Warm up America! Web site for more patterns:

<http://www.warmupamerica.com/patterns.html>



Warm up America Afghans will again be donated to a local homeless shelter this year.

Join us January 2nd in Bend (location TBD) from noon to 5 pm to piece these finished squares

Three Basic Knitting Patterns

Worsted-weight acrylic yarns

Gauge: 5 stitches = 1 inch

Finished size: 7" by 9"

Needle size: 7 needles or size necessary to obtain gauge

GARTER STITCH

Cast on 35 stitches.

Knit every row until piece measures 9".

Bind off.

STOCKINETTE STITCH

Cast on 35 stitches.

Row 1: Knit all stitches.

Row 2: Purl all stitches.

Repeat these 2 rows until piece measures 9".

Bind off.

SEED STITCH

Cast on 35 stitches.

Row 1: Knit 1 stitch, purl the next stitch, knit the next. Continue alternating stitches across the row. Repeat this row until piece measures 9".

Bind off.

Bind off in pattern.

Three Basic Crocheting Patterns

Worsted-weight acrylic yarns

Gauge: 9 stitches = 2 inches

Finished size: 7" by 9"

Hook: Size G crochet hook or size necessary to obtain gauge

BASIC SINGLE CROCHET

Chain 30 for the foundation chain.

Row 1: Single crochet in 2nd chain from hook, and in every chain in the foundation row. Chain 1 and turn your work. Row 2: Working under the 2 top loops of each stitch in the previous row, single crochet across the row. Chain 1 and turn. Repeat Row 2 until piece measures 9". Fasten off.

BASIC DOUBLE CROCHET

Chain 27 for the foundation chain.

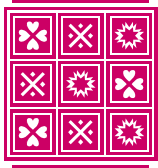
Row 1: Double crochet in 3rd chain from hook and in each chain of the foundation row. Chain 2 and turn your work. Row 2: Double crochet in each stitch across the row. Chain 2 and turn. Repeat Row 2 until piece measures 9". Fasten off.

SHELL STITCH

Chain 31 for the foundation chain. (This stitch requires multiples of 6 chains plus 1.)

Row 1: Work 3 double crochets in the 4th chain from the hook. *Skip 2 chains. Single crochet in the next chain. Skip 2 chains, then work 5 double crochets in the next chain.* (You've created your first shell.) Repeat the sequence of stitches between the asterisks (*) across the row, ending with skipping 2 chains and 1 single crochet in the last chain. Chain 3 and turn your work.

Row 2: Work 3 double crochets in the 1st single crochet. *Work 1 single crochet in the center double crochet of the next shell, work 1 shell of 5 double crochets in the next single crochet.* Repeat the sequence of stitches between the asterisks (*). End with 1 single crochet on top of the turning chain. Chain 3 and turn your work. Repeat Row 2 until piece measures 9". Fasten off.



Lap Quilts for Harmony House!

We will again be making lap quilts for the folks at Harmony House! The dates the quilts will be given has not yet been decided, but we would like to do it around Christmas if possible. The activities coordinator at Harmony House, Pam Hiatt, passed away recently and will be sorely missed. Until they have a new coordinator, we will wait to make final plans, However, don't wait to get those quilts completed! Be ready ahead of time!

There is no set pattern for the finished quilts, but I would like the finished products to measure 36" x 36", or close to it. In the past many of us have made rag-top lap quilts, which are simple, warm and relatively quick to put together, but you may use any quilt pattern you or your club would like! This community service really puts a smile on the faces of the people who receive the quilts!! Please consider making one or more quilts to donate! We will be visiting Harmony House in Dec. (Date TBD) to present our Christmas gifts! If you have questions, contact Tina! Thanks!



Ragtop Lap Quilt Pattern

You will need 20 squares for the top and 20 squares for the bottom of your quilt. You will also need 20 flannel (or heavier fabric) pieces for the batting in your quilt. (Squares are 8" x 8" square.)

Put the squares together with the bottom square wrong side up, a flannel piece for the center, then a top square right side up on top of that. You should have three squares stacked with the right sides showing on the top and bottom of the stack. Do this with all 60 squares. (1)

When you have your squares sandwiched, place them in 6 rows of 6 squares in a design you like. Place two bottom squares together, right sides facing. Sew along one side making a 1/2" seam. Add another square with the bottom right sides facing. When you have 6 squares connected, make another row. (2)

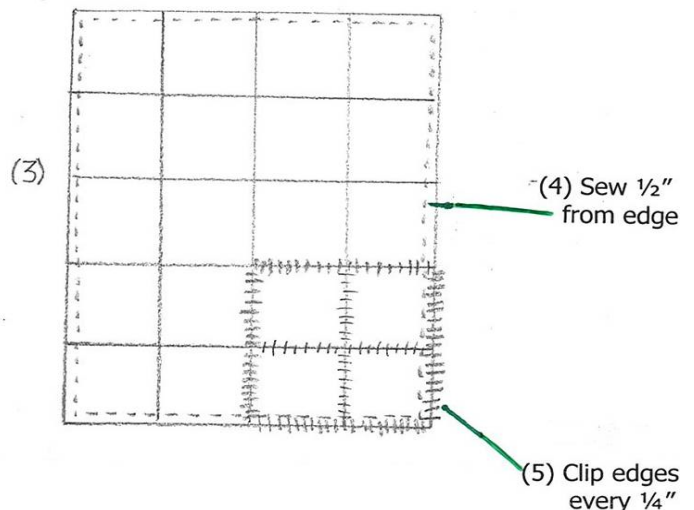
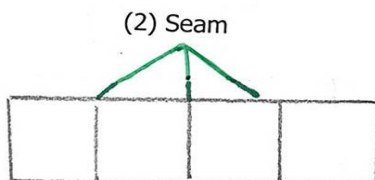
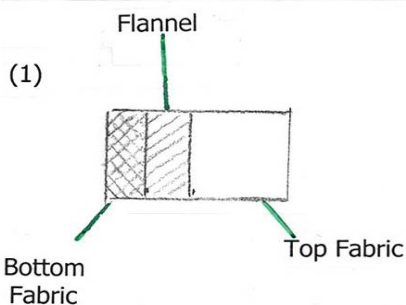
When you have completed all 6 rows, sew these together making your quilt 6 rows wide and 6 rows long. (3)

Press the seams open on the outside edges; stitch 1/2" from the edge all the way around the quilt. (4)

Clip all seams every 1/4". Be sure to keep from clipping the thread in your seam. (5)

Wash you finished quilt to fray edges. This can be messy, so you may want to use a commercial washer and dryer.

This is the visual pattern we use for skills contest, and it is smaller than the 6x6 pattern we use for Harmony House Quilts. The written instructions above are correct.



Small Animal

Important Small Animal Dates to Remember

2008

Oct 14 Tue Small Animal Committee Meeting; 6 pm

2009

Jan 13 Tue Small Animal Meeting, North Sister Bldng, 6 PM

Mar 10 Tue Small Animal Meeting, North Sister Bldng, 6 PM

May 12 Tue Small Animal Meeting, North Sister Bldng, 6 PM

Jul 14 Tue Small Animal Meeting, North Sister Bldng, 6 PM

Sep 8 Tue Small Animal Meeting, North Sister Bldng, 6 PM

Oct 13 Tue Small Animal Meeting, North Sister Bldng, 6 PM

A Few of the Agenda Items for Tuesday, October 14, 2008

- ⇒ Show & Judging Contest Date
- ⇒ Fair Debrief
- ⇒ Fair Judges
- ⇒ Requiring advancements
- ⇒ Hauling Market Animals to Boring



High Desert Challenge Course Open to 4-H Clubs

Many of you have probably noticed the poles located across from the Extension office. They are strung with wires, boards, poles, and ropes. Just a short 30 feet off the ground, the cat walk, Burma Bridge, Multivine, Two Line Bridge, Charlie Chaplin, Railroad, and Zip Line await the next participant to strap on a harness and safety lines in an attempt to conquer their challenges.

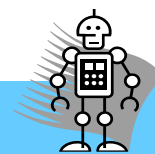
The spring and summer hours bring later sunsets which means 4-H clubs in Deschutes County can start calling to book times to get up on the course. It takes approximately 4 hours for 12 youth and adults to traverse all the elements. I can start taking reservations now. Call 541-548-6088, visit www.hdcchome.com or email me at david.white@oregonstate.edu if your club wants to get up on the course. There is no charge to participate. A release must be signed in order to discover all the HDCC has to offer. Djw

Fun Opportunity! And, Community Minded Too!

The Central Oregon Humane Society is putting together the Central Oregon Pet Expo.

The event is held at the fairgrounds on October 17 & 18, all proceeds benefit the Central Oregon Humane Societies.

They need our help. Please contact Amy at 815-3406 or Amy@OregonPetexpo.com



4-H BIT

(Business, Information & Technology)

Lego Robotics Clubs

The First Lego League competitive season is over. Central Oregon 4-H Technology has kits (RCX) to loan out to 4-H clubs wanting to participate in Lego club activities, and build projects for the county or state fairs.

Please contact Sarah Cofer at sarah.cofer@oregonstate.edu or 541 771-1411 for more information.

The proper time to influence the character of a child is about a hundred years before he is born.

*William Ralph Inge
Cleric*



Dog House



Dog Project Committee Meeting Highlights September 3, 2008



- Candi will take over managing the dog project area. The superintendents will have more control and ownership of their respective project areas
- **Dog Fair went very well, timing was good, and we could probably start earlier next year**
 - We do need less people for set-up and more for clean-up, possibly have clubs sign up for jobs.
- Have parents sign-up for volunteer jobs during fair: maintenance, mat rollers, gate set-up, 2 scribes, 2 ring stewards, clerk, award helper, photo helper, chair set-up organizer, - give them a description of their role prior to fair
- We would like some kind of white boards showing the class that is currently showing in each ring and which armband #s are in
- Anne suggested having better communication between the superintendents and the judges
- Anne will check premium book verbiage on unsafe dogs and that will be discussed with the judges prior to classes starting
- We would like all 3 judges back (obed, show, rally) for 2009 Fair
- **Curriculum—Love the Ohio curriculum**
- We need to decide what other handouts or curriculum the 4-H members will need to be responsible for knowing
- **Future Stuff**
 - Deb is looking into a MBKC show for Winter to possibly take place in the Expo Center – a bigger fun match type of event
 - Deschutes Desert Dogs would like to put on their fun match in March again – Kellie will e-mail Candi with date requests
- Next Dog Project Committee Meeting:
Tuesday, October 14th at 6:00 in the North Sisters

Schedule of Events

⇒ All committee meetings will be at the North Sister building on the fairgrounds.

2008

Tue Oct 14 Dog Committee Meeting, 6:pm

2009

Tue Jan 13 Dog Committee Meeting, 6: pm

Tue Mar 10 Dog Committee Meeting, 6: pm

Sat Mar 14 Deschutes Desert Dogs Fun Match

Tue May 12 Dog Committee Meeting, 6: pm

Tue Jul 14 Dog Committee Meeting, 6: pm

Tue Sep 8 Dog Committee Meeting, 6: pm

Tue Oct 13 Dog Committee Meeting, 6: pm

A Few of the Agenda Items for Tuesday, October 14, 2008

- ⇒ Judging Contest & date
- ⇒ Fair date & time
- ⇒ Advancements required?
- ⇒ Fun Match dates & schedule
- ⇒ New curriculum materials



Vocabulary Words

How many do you know?

Gestation—The length of pregnancy, from conception to whelping.

Belton—A mix of colored and white hair, as orange belton or blue belton in English Setters.

Brindle—An even mixture of black hair with hairs of a lighter color.

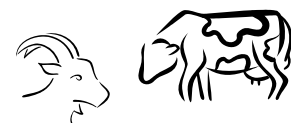
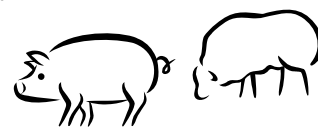
Leptospirosis—a bacterial disease that infects both animals and humans that is caused by one of four common strains of *Leptospira interrogans sensu lato*. Leptospirosis is preventable by vaccination and treatable with antibiotics.

Sable—Hair a lighter shade at the base with darker tips.

Catch Pen

Important Livestock Dates to Remember

<u>2008</u>		
Tue	Oct 14	Livestock Committee Mtg, 6: pm; North Sister Bldng
<u>2009</u>		
Tue	Jan 13	Livestock Committee Mtg, 6: pm; North Sister Bldng
Sat	Feb 7	Steer Weigh In; 10 AM—12 PM; Sagebrush Arena
Tue	Mar 10	Livestock Committee Mtg, 6: pm; North Sister Bldng
Tue	May 12	Livestock Committee Mtg, 6: pm; North Sister Bldng
Mon	May 18	Sheep, Swine, Goat Weigh In; 4 pm—8 pm; Behind the Barns
Sat	Jun 6	Juniper Jackpot; DCFE, Beef or Sheep barn
Sat	Jun 27	Goat Judging Contest, 10 AM—place TBD
Tue	Jul 14	Livestock Committee Mtg, 6: pm; North Sister Bldng
Tue	Jul 28	Livestock Arrives for Fair, 7 am—12 pm
Wed-Sun	Jul 29-Aug 2	DESCHUTES COUNTY FAIR
Tue	Sep 8	Livestock Committee Mtg, 6: pm; North Sister Bldng
Tue	Oct 13	Livestock Committee Mtg, 6: pm; North Sister Bldng



**red denotes changed dates*

Thank You

To Our 4-H Family,

Thank you, two small words that mean so much. Karla and I can not Thank everybody enough for all of the hugs, thoughts, and prayers that everyone has given us during this time since Steve passed away. We appreciate all that has been done for us.

A special Thanks to the Pork Tenders, Jay and Dawn, Baconators, Karla's judging buddies, and their families, Candi, Dave, Tina, and the rest of the 4-H staff, and to everyone else who has been there for us.

Thank You !!!
Donna and Karla Grudt



A Few of the Agenda Items for Tuesday, October 14, 2008

- Mastershowmanship commitment
- Premium book schedule & sticking to it
- Rule & class review for 2009
- Other ways to teach the importance of Rate of Gain

Livestock Advisory Meeting

Sept 25, 2008



Here are some highlights from the recent livestock meeting:

- Group voted to retain all of last year's judges if OK with FFA, except swine judge.
 - In all fair seemed to be a good experience
 - Agreed to institute minimum rate of gain as a criteria in addition to weight ranges and blue/red ribbon, as criteria for sale. (This has to meet FFA approval too) [.5 lbs/day for lambs; 1 lb/day for hogs; and 1.5 lb per day for steers]
 - Group wants to do a mastershowmanship clinic – Judy Hackett's group agreed to host
 - Agreed to have work in the food booth meet a pre-fair requirement for the following year
 - Advancements will be required with pre-fair record books. This year everyone will be required to complete step 1
 - Need teachers for idea fair
 - A reminder about using things like "pig calm," "calf calm" etc....they are not allowed!
 - Discussion about trying to get more folks to state fair
 - The group asked superintendents to schedule the additional barn needs for various clubs – XX club will clean wash racks on Thu and XXO club will clean out the show ring on Thu, etc.
- Next Meeting: October 14, 2008 – 6 pm

Catch Pen

Auction Committee Meeting Highlights



Sept 29, 2008

- Review of 2008 sale. Generally, well organized, things went very well.
- Need ring men – 4-H will be sure these positions are filled in the future
- Some discussion about trucking and communication between truckers and the plants.
- Some discussion about funds and what might be supported this year. 4-H is asking for support for HDLR, Juniper Jackpot, some powder coating and FFA is asking for some help with their leadership training. Additionally, \$5,000 toward new goat panels and money for steel for more pig pens will be spent.
- Auction time was changed from 3 pm start to a 2 pm start for 2009
- Sale order will change in 2009 – Champions followed by blues, followed by reds will be the new order.
- Discussion about adding short bios to kids with champion animals
- Some discussion about being sure the BBQ gets started on time
- Some discussion about the silent auction and being sure this group follows the written procedures already outlined.
- Need a non-participating club to help be runners
- Lots of discussion regarding the cover pages of the catalog...this was tabled with folks asked to submit proposed changes to Chuck and Kiwanis will do some more research on specific statements that some felt may not be appropriate.
- Next Meeting: Monday, January 26, 2009; 6:30 pm

In nature there are neither rewards nor punishments—there are consequences.

Robert G. Ingersoll

Do These Products Look Familiar?



The catalog advertisement reads like this:

“Show Cattle Paste™ - Great Show Day Product!

Allows exhibitor to handle show animals more professionally. Provides a calming effect during stressful times such as shows. One tube works for animals up to 1000 pounds. Administer two to three hours before time of showing. Absolutely a must for show cattle.”

The hog and sheep paste reads very similar. These products are NOT allowed. Animals are to be shown to demonstrate the work the 4-Her has done. These products are not created to help you “show more professionally,” only practice and instruction can do that. These products are created to cover up your lack of effort or practice. This is not acceptable. If you have an animal that’s “high strung,” no matter how hard your work it, that’s the luck of the draw. Do your best!

Using these products, other drugs or “natural products” to alter animal behavior is against the rules and getting caught will likely mean losing the year’s opportunity to exhibit, sell, or win any special awards.

Any questions, ask Candi—541-548-6088

Advancements Required!

All 4-H livestock exhibitors will now be required to include a completed *step 1* advancement with their pre-fair record books. (if advancements are available.) In the case of market projects, there is a meat animal advancement. Any questions, give Candi a call.

Catch Pen

Rate of Gain Winners

Rate of gain is the average daily gain between pre-fair weigh in and fair weigh in. Congratulations to this year's contest winners:

Beef

1. Tefna Mitchell with a 4.20 lbs/day ROG
2. Zach Boehmes with a 3.76 lbs/day ROG
3. Kristen Russell with a 3.70 lbs/day ROG
4. Rheanna Stott with a 3.40 lbs/day ROG
5. Jesse Jones with a 3.32 lbs/day ROG

⇒ Average Beef ROG for 2008: 2.74 lbs/day
⇒ Members should strive for a minimum of 1.5—2.0 lbs/day rate of gain for steers.

Sheep

1. Chloe Goodwin with a 1.07 lbs/day ROG
2. Luke Case with a .97 lbs/day ROG
3. Miranda Maricle with a .95 lbs/day ROG
4. Caleb Bratton with a .90 lbs/day ROG
5. Mickaela Cyrus with a .88 lbs/day ROG

⇒ Average lamb ROG for 2008: .64 lbs/day
⇒ Members should strive for a minimum of .5 lbs/day rate of gain for lambs.

Swine

1. Danyele Arnett with a 2.32 lbs/day ROG
2. Roslynn McGhehey with a 2.19 lbs/day ROG
3. Ben Farruggia with a 2.19 lbs/day ROG
4. Brigitte Kenny with a 2.15 lbs/day ROG
5. Cassidy Fisher with a 2.12 lbs/day ROG

⇒ Average Hog ROG for 2008: 1.69 lbs/day
⇒ Members should strive for a minimum of 1.0—1.5 lbs/day rate of gain for market hogs.

Goat

1. Annika Schinkel with a .56 lbs/day ROG
2. Ryan Kruse with a .41 lbs/day ROG
3. Megan Foster with a .41 lbs/day ROG
4. Riley Hackett with a .38 lbs/day ROG
5. Melissa Hubler with a .37 lbs/day ROG

⇒ Average Goat ROG for 2008: .36 lbs/day.
⇒ Members should strive for a minimum of .25 lbs/day rate of gain for goats.

Classy Camelids & Caprines 4-H Scholarship Program

Classy Camelid & Caprines 4-H group: Scholarship awards Program annually provides \$500, \$400, \$300, \$200, \$100, and \$50 etc., for points accumulated by youth in this 4-H group working with their llamas and alpacas. Call Betty Moe (541-548-4158) or Lesley Hanson (541-548-1670) for more information.

Fun Opportunity! And, Community Minded Too!

The Central Oregon Humane Society is putting together the Central Oregon Pet Expo.

The event is held at the fairgrounds on October 17 & 18, all proceeds benefit the Central Oregon Humane Societies.

They need our help. Please contact Amy at 815-3406 or Amy@OregonPetexpo.com

Awards Available

Check out the premium book, you may be eligible for the small animal sportsmanship award.

Your club may be eligible for the David & Chris Lawrence Sportsmanship Award.

Look for other special award opportunities in the 4-H Premium Book.



To calculate your animal's daily rate of gain, subtract your pre-fair weight from your fair weight and divide that result by the number of days between weigh-ins. (171 days for steers and 69 days for sheep, swine and goats) *Example for a hog:*

Weigh-in weight:	262 pounds
Pre-fair weigh-in :	104 pounds
262 minus 104 =	158 pounds
158 divided by 69 days =	2.29 lbs/day ROG

Catch Pen

Master Showmanship Results REVISITED

As some of you may already be aware. There was a bit of a challenge with the Master Showmanship calculations at this year's fair. So, in order to accommodate that we've ordered some additional awards, so all winners can be recognized. Congratulations to all!

Master Showmanship Champions

Clinton Cranston
Michael Hopp

Master Showmanship Reserve Champions

Keelan Lundquist
Riley Hackett

If you want to review your results, they are available in the office. ccb

Important Noxious Weed Information

Noxious weeds infest millions of acres in Oregon and continue to spread into healthy agricultural, timber, and rangeland, causing major economic impact. Noxious weeds also invade watersheds, negatively impacting wildlife and native plants. Our first line of defense to protect both our economy and ecosystem from weed invasion is "prevention". The use of weed-free hay and straw is one very important prevention strategy for protection of natural resources.

Many cooperators in Oregon request certified weed-free straw to be used in restoration projects and for all hay brought onto federal lands. Cooperators include the U.S. Forest Service (USFS), Bureau of Land Management (BLM), and Oregon Department of Transportation (ODOT). The USFS suggests that certified hay be available to equestrians using the "back county" in an effort to prevent weed introductions via contaminated hay. The USFS Invasive Plant Environmental Impact Statement (EIS) includes a major emphasis on prevention. As of January 1, 2007, all Region 6 USFS wilderness areas require exclusive

Ralph McNulty Scholarship Sponsors

As you may be aware, Ralph works to get several production animal and other project area scholarships for deserving youth throughout our program. The following is a list of his sponsors—Much Thanks to Ralph, Dee and Nancy for making this possible for the youth in our program—and thanks to the many sponsors!

Terry Burgess---Sno Cap Drive-in Sisters
Countryside Equine Clinic
Cowboyz Feed Co....Tami Leonard
Hoyt's Hardware & Building Supply
Nan & Henry Lewis
Funnel Cakes West (\$1000.00)
"Ralphs Angels" (\$1000.00)
Keeton-King Construction Inc.
Hap & Roxanne Taylor
Walmart Photo Lab....Bend
Carroll & Sharon Penhollow
Ralph & Dee McNulty
Central Oregon Dairy Goat Association
Bob & Carolyn Schmidt
Clyde W. Purcell
The Stitchin Post
Dr. Douglas Zirker, Olin & Liam Rogers
Murtaugh Dental Corporation
Aspen Lakes

Also: They Yvonne Light Memorial Scholarship for Photography.

use of weed-free forage and mulch for outfitter guide use, recreational use, and fire rehabilitation. Effective January 1, 2009 all Region 6 administered lands will require weed-free forage, mulch, and rehabilitation products. To implement these initiatives, a certified products program needs to be available. Additionally, many counties and cities are requiring certified straw for ODOT roadside restoration projects.

Straw to be used as mulch for construction and fire re-habilitation is in the greatest demand. Wildfire potential is highest during periods of low rainfall and reduced snow pack, thereby increasing the demand for certified straw.

Horse'n Around

Horse Calendar ~ 2008



Oct 14	Tue	Horse Project Meeting, North Sister Bldng, 6 PM
	2009	
Jan 13	Tue	Horse Project Meeting, North Sister Bldng, 6 PM
Mar 10	Tue	Horse Project Meeting, North Sister Bldng, 6 PM
May 12	Tue	Horse Project Meeting, North Sister Bldng, 6 PM
Jul 14	Tue	Horse Project Meeting, North Sister Bldng, 6 PM
Jul 16-19	Thu-Sun	Deschutes County Horse Fair
Jul 20	Mon	DCF Horse Awards; 6:30 pm
Sep 8	Tue	Horse Project Meeting, North Sister Bldng, 6 PM
Oct 13	Tue	Horse Project Meeting, North Sister Bldng, 6 PM

Need a Volunteer or Two

We need to paste award winner photos on placards and get them sent off to our fair sponsors. Candi sort of forgot to make this happen earlier—now I need your help. ccb

A Few of the Agenda Items for Tuesday, October 14, 2008

- Mastershowmanship
- Club Requirements
- Judging & Horse Bowl Dates
- Turning in club calendars
- Fall Clinic possibilities?
- Gaming, top 5 or top 10

I believe in people and think they are more effective when given principles rather than procedures, strategies rather than tactics, whys rather than wants.

Harvey Golub

People are asking about

OHSET dates 2009

- ⇒ Meet #1: Fri, Feb 13—Sun, Feb 15
- ⇒ Meet #2: Fri, Mar 27—Sun, Mar 29
- ⇒ Meet #3: Thu, Apr 16—Sat, Apr 18
(awards 4/19)
- ⇒ State: May 14-17, 2009, Central Point

Horse Committee

Meeting Highlights

September 11, 2008



- ⇒ **Fair.** Overall went well. Like the event center and want to continue using it. Would like to add a bareback class.
- ⇒ **Volunteers at fair.** Need more volunteer help. We need to instill this at the club level; the show only happens if everyone helps.
- ⇒ **Fair Judges.** Would like to have Ellen and Dixie for performance. It was suggested we try to move away from such local ranch horse judges, except maybe Bobbi or Dick Elliott. Other suggestions included: JoAnn Oswald, Diana VanOrman, and Heather Loveall.
- ⇒ **Dressage.** Members will now only ride **one** test. Members who ride a training level test and receive a 68 or higher, must move on to the next test. Those who ride a First level test and receive a 64 or higher must move on to the next test—this is in addition to the state criteria of a 62 or higher at state moves on. The exception would be a test change year or a new horse.
- ⇒ **Top 5** for gaming. Want to revisit and determine if it's time for top 10 gaming.
- ⇒ **Fair Schedule.** Add page numbers, headers and footers, print one side—add what judges are doing what
- ⇒ **Clinics.** Need roping and cow working. Dad Potter and the regulars.
- ⇒ **Fair Schedule.** Maybe move jumping following dressage, since riders will only be riding one test.

Horse'n Around



State Horse Development

Meeting Notes, Sept 27, 2008

Here's some of the highlights from your state horse committee...THESE ARE NOT FINAL DECISIONS, counties have 60 days to respond before the state staff along with the advisory committee makes a final decision.

- Numbers were up slightly at state horse fair, 267 performance exhibitors and 92 gaming exhibitors.
- Spring Horse Classic, 2010 will return to Deschutes County
- The contest guide has changes, for Oregon they are fairly minor, but the order of pages is much different – go to the Oregon 4-H website to print off a new copy.
- The ranch horse publication is progressing – it won't go statewide officially until after the judges training in fall of 2009
- The gaming judges training was canceled because of a lack of registrations. More gaming will be added to the 2009 training.
- There were some challenges with the trail pattern at state – more detail on the pattern is necessary; asked for Deschutes County to continue this responsibility.
- It was decided that next year at state fair, those who qualify may show a second seat if they received a blue in both.
- Also decided, that gaming participants will show in showmanship at state fair. It will only be required once, so if they show in performance, they won't have to do it with their gaming horse.
- Next year, counties will be assigned volunteer responsibilities at state horse fair.
- A new score sheet for ground training and a new scoring basis was approved.

EXTENSION news

Oregon State University
Extension Service • Deschutes County

Non 4-H Extension Staff

Staff Chair

Dana Martin
541/548-6088 x 7957 or
Dana.martin@oregonstate.edu

Other Staff

Stephen Fitzgerald, Silviculture & Wildfire Specialist
Amy Jo Detweiler, Horticulture Faculty
Steve Edwards, Horticulture Program Assistant
Glenda Hyde, FCD Faculty & OFNP Program Mgr
Dana Martin, Central Oregon Small Acreage Faculty
Gay Demmer, Extension Secretary

Administrative Secretary

Darlene Belden, Administrative
541/548-6088 x 7956 or
Darlene.Belden@oregonstate.edu

- Making the most of your Small Farm/Small Acreage Workshops—Contact Dana Martin, 548-6088
July 25 ~ Fruit Trees
- Pie Fillings, July 8—Glenda Hyde, 548-6088
- Pickles, Aug 19—Glenda Hyde, 548-6088
- Pressure Canning & Smoked Fish, Sep 25—
Glenda Hyde, 548-6088
Flavored Oils/Vinegars/Gift Baskets, Oct 23—
Glenda Hyde, 548-6088

Food Safety/Food Preservation Hotline

1-800-354-7310

July 14-Oct 17 • 9 am-4pm • Mon-Thurs

**Deschutes County
Extension Staff**

3893 SW Airport Way, Redmond, OR 97756
541/548-6088 or Fax: 541/548-8919
<http://extension.oregonstate.edu/deschutes/>

4-H Staff

Dave White, 4-H/Youth Development Faculty
541/548-6088 x 7953 or
David.White@oregonstate.edu

Candi Bothum, 4-H Program Coordinator
541/548-6088 x 7954 or
Candi.Bothum@oregonstate.edu

Tina Hohman, 4-H Program Assistant
541/548-6088 x 7952 or
Tina.Hohman@oregonstate.edu

Houston Chatham, 4-H Program Assistant
541/548-6088 x 7965 or
Houston.Chatham@oregonstate.edu

Sarah Cofer, Central Oregon 4-H BIT
541/548-6088 x 7958 or Sarah.Cofer@oregonstate.edu

Secretarial Staff

Reaza Mansur
541/548-6088 x 7966 or
Reaza.Mansur@oregonstate.edu

Deschutes County 4-H
Leaders Assoc
3893 SW Airport Way
Redmond, OR 97756

NONPROFIT
U.S. POSTAGE
PAID
PERMIT NO. 170
REDMOND OR

Deliver to the family of:

MOVING?

Don't miss a single issue of *Over the Clover*. Fill out the form below and return it to OSU Extension Service, P O Box 1251, Redmond OR 97756 now! If you are a new subscriber, please enclose \$10 payable to DCLA (Deschutes County 4-H Leaders Association).

Name _____

Email _____

Street _____

Phone _____

City _____

State _____ Zip _____



For the Record...

Extension Service, Oregon State University, Corvallis, Scott Reed, Dean & Director. This publication was produced and distributed in furtherance of the Acts of Congress of May 8 and June 30, 1914. Extension work is a cooperative program of Oregon State University, the U.S. Department of Agriculture, and Oregon Counties.

Oregon State University Extension Service offers educational programs, activities, and materials without regard to race, color, religion, sex, sexual orientation, national origin, age, marital status, disability, and disabled veteran or Vietnam era veteran status as required by Title VI of the Civil Rights Act of 1964, Title IX of the Education Amendments of 1972 and Section 504 of the Rehabilitation Act of 1973. Oregon State University Extension Service is an Equal Opportunity Employer.