



A monthly publication for the 4-H, leaders & families of Deschutes County

A partnership between Oregon State University Extension, Deschutes County 4-H Leaders & Tracy George Graphics

Vol. IV, Issue 1, November 2001

IN THIS ISSUE



Feature 4-H Makes The Worst Better Page 1

4-H Happenings Calendar Page 2

What's Up Page 3-9

The Lee Side Page 10

State & County Results Page 11-14

Inbox Page 15

The Catch Pen Page 16-17

Horse'n Around Page 18

Needles, Noodles & Stuff Home Ec Page 19

Did You Know? Page 20



4-H Makes the Worst Better

The tragic events of 9/11 shook the very foundations of buildings. It reduced them to ash and rubble. The effect of the collapse of concrete and steel at both the World Trade Center and the Pentagon was indiscriminate, unbiased, and without prejudice. The lives of many individuals, regardless of race, color, creed, or national origin, were taken. Those suffering the most are those who remained behind.

The articles you are about to read are a testimony to the human spirit and the realization, as a nation, what happens to one of us happens to all of us. They are as follows:

Rallied for a Cause

September 11, a day that usually just went by the wayside in America, until the year 2001 when America was severely shaken. A few people decided the way Americans lived their lives was the wrong way and America needed to change. So, with one deadly plan, they swooped in and destroyed one of our most recognized symbols and severely harmed the main nerve of our nation's defense. Coming to the rescue of the victims in New York were the heroic men and women of New York city and surrounding police and fire departments. Right on their heels were their valiant companions the trusty search dogs.

As America was struck with shock, a miraculous brotherhood emerge and groups rallied together to benefit the victims and those affected by the tragedy. One such group began with a few Deschutes County 4-Hers of the Bunny Brigade deciding they should do something. They rallied together and held a carwash to benefit the victims of New York. They began by gathering other 4-Hers. Their fire eventually ignited other youthful sparks in the community. They

went through the process of planning and finding locations. Finally, three car washes were held in Bend on September, 30th at S&S Auto Parts, South McDonald's, and North Albertson's (which also had a hotdog stand).

They discovered many of the people and businesses in central Oregon were more than willing to do their part, to help and do what they could from having their motorcycle washed, to donating supplies such as soap. The selfless actions of these 4-H members and other central Oregon youth leaves you proud to be an American and confident about the future of America.

The way these members of America's youth rallied together is reassurance our youth should be able to overcome anything that the world many throw at them. Nic Silbaugh

HOPING TO HELP

On September 11th, as we all know, America was attacked by terrorists. Along with many across our Nation, the Stitchin' Kitchen and Saddle Up and Go 4-H groups wanted to help the victims of New York. Yet, what could a group of girls do when we were so far away? We felt useless. We saw other communities pulling together, wanting to help, but what could we do? How could we help?

We put together a fund raiser. Within four days, we were in front of the Feed Barn, in Redmond, enlisting the help of our community.

I think I can speak for all of us girls. We felt proud as we arrived on the morning of September 22nd. We stood by our country's flag, as it fluttered in the breeze, and were able to offer the Feed Barn's patrons a chance to give to the cause in New York. They could purchase patriotic lapel pins and/or car antennae ribbons. They could also sign a large red scrap book that made our community pride swell.

The lapel pins were a true labor of love. With people scurrying to buy anything red, white and blue, there was no such ribbon to be found. We were finally able to offer these for a donation, along with curly-ribbon antennae toppers.

We had decided to donate all of the raised funds to the "Widow and Child Fund," specifically for the NYC Firefighters, Squad 18. This squad had eight men and a brand new fire truck respond to the Twin Towers explosion. They lost seven of the eight men, as well as the truck.

People signed or wrote a note of appreciation in a wonderful scrapbook. People did sign with concern and feeling. It made me aware and proud to see the response

from the people of Central Oregon.

The blank red book was graciously donated by Thelicia Tomlinson, of Creative Memories. Mrs. Perry, our leader, and her husband graced each page with inspiring photos capturing the many signs around our community that spoke of support for our Nation.

It was a great morning and our two 4-H clubs offer much thanks to the Feed Barn for allowing us to use their store-front. Also a "thank you" to Gay at the 4-H office for her speedy help in completing necessary paperwork and to the other clubs that made a special trip to give us support and donate to the Firefighters.

We raised \$252.00 — thank you all who donated. We send with this money and the signed scrapbook many thoughts and prayers for our fellow citizens. Sarah Wheaton



Front Row: Charmaine Thomlinson, Becca Wheaton, Shay Dodd-Perry, Lindy Dodd-Perry, Jennifer Grimm; Back Row: Sarah Wheaton, Sara Santee

NONPROFIT U.S. POSTAGE PAID PERMIT NO. 170

Over The Clover c/o Deschutes County 4-H Leaders Association 1421 S. Hwy 97 Redmond, Oregon 97756





# 4-H HAPPENINGS

## 2001

- 3 Horse Bowl #3, DCF ~ Juniors 8:30 a.m., Int/Sr 1 p.m.  
3 Horse Judging Contest, DCF Event Center, 2 p.m.  
7 Small Animal Project Meeting, 6:30 p.m., OSU Central Oregon  
9 Board of Trustees 7-9 pm, Warm Springs  
10 DCLA Dog Show, DCF, HDAC  
10 Small Animal 4-H Leaders' Regional Training, Linn Co office  
12 Veteran's Day, Office Closed  
12 Executive Committee Meeting, 7 p.m.  
13 Ranch Horse, 6:30 p.m.; Horse Project Meeting, 7 p.m., DCF  
13 Dog Program Members, Leaders, and Parents Round Table, 6:30 p.m.  
14 New Leader Training, 6:30 p.m., Redmond Library  
15 Awards Committee Meeting, 5:30 p.m.  
15 Horse Bowl #4a, OSU Central Oregon ~ Juniors ONLY, 6pm  
17 4-H Member/Leader Recognition Night, N Sister, DCFE, 6 p.m.  
17-18 Horse Judges Training – Driving & Equitation Over Fences, Albany  
19 Horse Bowl #4b, OSU Central Oregon ~ Int/Sr ONLY, 6:30 p.m.  
22-23 Happy Thanksgiving!  
26 Jackpot Meeting

Dec 25 Happy Holidays!

## 2002

Jan 1 Happy New Year!

- 2 Small Animal Project Meeting, 6:30 p.m.  
3 Club Officer Training, 6:30 p.m.  
8 Ranch Horse, 6:30 p.m.; Horse Project Meeting, 7 p.m.; N Sisters DCF  
9 Horse Bowl, Crook County, Ext 6:30 p.m.  
10 Gala Committee Meeting 7 p.m. DC Extension Office.  
17 Auction Meeting, 7 p.m.  
18-21 Junior Leaders Retreat  
21 Martin Luther King Day, Office Closed  
24 New Leader Training, 6:30 p.m.

- Feb 2 Steer Weigh-In 9-11 a.m.  
6-10 Western Regional Leaders Forum  
11 Natural Resources Committee Meeting, 6:30 p.m.  
16 Gala Fundraiser 7-9 p.m. DCF, North Sisters Bldg  
18 President's Day, Office Closed  
18 Livestock Meeting, 7 p.m., DCF  
21 Auction Meeting, 7 p.m.  
23 **IDEA FAIR ~ All Areas ~ Redmond High School**  
23 New Leader Training, Idea Fair  
26 Home Ec Meeting, 7 p.m.

- Mar 5-6 Small Animal Project Meeting, 6:30, OSU Central Oregon  
12 Ranch Horse, 6:30 p.m.; Horse Project Meeting, 7 p.m., DCF  
14 Awards Committee, 5:30 p.m.  
21 Auction Meeting, 7 p.m.

- Apr 4-5 Oregon 4-H Leaders Forum, Corvallis  
8 Natural Resources Committee Meeting, 6:30 p.m.  
9 New Leader Training, 6:30 p.m.  
13 4-H Community Service Day  
15 Livestock Meeting, 7 p.m., DCF  
18 Auction Meeting, 7 p.m.  
20 Presentations  
22-28 National Volunteer Week  
23 Home Ec Meeting, 7 p.m.  
27-28 Spring Horse Classic, Ontario  
May 1 Small Animal Project Meeting, 6:30 p.m.  
2-5 Know your State Government, Salem  
6 Oregon Leaders Forum, Corvallis  
11 Food & Clothing Skills Contests, Hugh Hartman Middle School  
14 Horse Project Meeting 6:30 p.m. DCF  
16 Knitting & Crocheting Skills Contest, Extension Office  
16 Ranch Horse, 6:30 p.m.; Horse Project Meeting, 7 p.m., DCF  
16 Auction Meeting, 7 p.m.  
18 FFA Horse Show, DCF  
23 New Leader Training, 6:30 p.m.  
25 DCLA Horse Show, DCF  
27 Memorial Day, Office Closed  
28 4-H Fair General Meeting, 7 p.m., DCF  
Jun 1 **Sheep Swine Goats wigh in 7-11 a.m.**  
3 **All 4-H enrollments and phase/skill level changes are due by 5 p.m.**  
8 Juniper Jackpot  
10 Natural Resources Committee Meeting, 6:30 p.m.  
13 Auction Meeting 7 p.m.  
15 Deschutes Diamond Riders Poker Ride  
17 Livestock Meeting, 7 p.m., DCF  
20 New Leader Fair Training: 6:30-7:15 non livestock; 7:15-8:00 general; 8:00-8:45 livestock/horse, DCF  
22 Winn'n Riders Horse Show, Diamond B  
25 Home Ec Meeting, 7 p.m.  
26-29 4-H Summer Conference, OSU  
27 Auction Meeting, 7 p.m.  
29 Deschutes Co Horse Leaders Ranch Horse Show, DCF  
July 1 **All Fair Entry forms are due by 5 p.m.**  
1 Record Book Checks 6-8 p.m. All Communities  
2 Record Book Checks 6-8 p.m. Redmond & Bend  
3 Small Animal Project Meeting, 6:30 p.m., OSU Central Oregon  
4 Holiday, Office Closed  
6 Ranch Horse Show, DCF, Juniper Arena  
8 Record Book Checks 6-8 p.m., Redmond  
8-12 4-H Camp  
9 Ranch Horse, 6:30 p.m.; Horse Project Meeting, 7 p.m., DCF  
11 Fashion Revue Judging  
15 Acution Committe Meeting, 7 p.m.  
26-28 Deschutes Co Horse Fair  
29 Deschutes Co Horse Fair Awards, 6 p.m.  
29 Deschutes Co Fair Entry Day  
30-8/4 **Deschutes County Fair**  
Aug 5 Office Closed  
12-20 Oregon State 4-H Horse Fair  
19 State Fair Static Exhibits delivered to Redmond Office, **7:30 - 10 a.m. ONLY**  
22-9/2 **State Fair, Salem**  
26 Natural Resources Committee Meeting, 6:30 p.m.  
Sep 2 Labor Day, Office Closed  
5 Small Animal Project Meeting, 6:30 p.m.  
10 Ranch Horse, 6:30 p.m.; Horse Project Meeting, 7 p.m., DCF  
16 Livestock Committee Meeting, 7 p.m., DCF  
19 Auction Meeting, 7 p.m.

*All meetings are at the Redmond Extension office unless otherwise noted.*

## The Over the Clover

Owned and Published By The Deschutes County  
4H Leaders Association. OSU Extention Phone# 548-6088

Layout & Design by Tracy George Graphics  
23024 McGrath Rd., ❖Bend, Oregon 97701  
Phone: 541-389-7815 ❖Fax: 503-423-8610

[tgeorge@cns-nw](mailto:tgeorge@cns-nw) ❖ [www.tgeorgegraphics.com](http://www.tgeorgegraphics.com)

The Over the CLOVER endeavors to accept only reliable advertising; however, we cannot be held responsible by the public for advertising claims. The 4H Leaders Association & Tracy George Graphics reserves the right to refuse or discontinue any advertisement.



# WHAT'S UP



## Quiz Bowl Day Planned

You've been asking for it, so we've planned a day of quiz bowl for members in the tri-county area. Bowl games are planned for livestock, horse, dog, small animal and citizenship. We need questions, questions, questions! Have your clubs type up some questions making sure you can find the answer in our materials. Get those questions and answers to me as soon as possible and we'll coordinate question packets for the day. Start preparing your teams, I've included questions to get you going in this month's newsletter. The date is still tentative, either March 2<sup>nd</sup> or March 9<sup>th</sup> at the Deschutes County Fairgrounds.

Questions should come to Candi either via Email, disk or as a last resort typed or hand written. Each question should include the answer, the 4-H manual the answer and question were derived from and the page number.

Teams should consist of beginner and advanced members. Beginner members are defined as two years or less in their project area. Teams can be of 4 or 5 members and can be combined clubs or even out of county folks.

We'll also need volunteers to be judges, question readers and score keepers for the day. Give Candi a call if you can help out.

This will **not** be part of the County Horse Bowl Contest but rather a fun day of learning, sharing, and fun recognition. Members or teams may participate in multiple subject areas if they choose. It should be a fun and educational event! Ccb

## Graduated Senior 4-Her Families

Remember that letter I mailed before fair. We're getting tight on time now. Please drop off or send those photos of your 2001 graduated senior. I'm putting together a presentation at the banquet in November and would love to include each of you. Ccb

## Ideas?

Idea fair; singular, there will only be one this year, it will be at the Redmond High School on February 23<sup>rd</sup>. There will be many classes to choose from, but we need to know what you want to learn or teach or who you know that might want to teach. Help us help you, by getting educators and giving us class ideas. Contact Candi or Paty with your information. Thanks for your help!  
Ccb



## Videos & Publications

Please be sure to return items borrowed from our office or me personally, promptly. Others wish to use them and that's tough to do if they're sitting at home on the coffee table. Ccb

## Pick up Fair Exhibits

If you have not picked up your state or county fair exhibits from our office, please stop by as soon as possible and pick them up! We have no storage for these items and need you to take them home. Thanks for your cooperation. Ccb

## Volunteers Needed

Community Theater of the Cascades is looking for older 4-H members or a club to help them build sets for the three plays they put on during the season. It is from October to May and you would be needed for a week or two before each play to build the sets. Anyone interested please contact Paty Jager 548-6088x13 or paty.jager@coinet.com.

## New Leader Training Schedule

November 14, 2001– 6:30pm at Remond Public Library  
January 24, 2002 – 6:30pm at the Redmond Extension Office  
February 23, 2002 at the Idea Fair, Redmond High School  
April 9, 2002 – 6:30 pm at the Redmond Extension Office  
May 23, 2002 – 6:30 pm at the Redmond Extension Office  
June 20, 2002 – 6:30 New Leader Fair Meeting at DCFG

## FYI

### Awards & Scholarships

Every newsletter I will be showcasing two or three awards or scholarships in the premium book. It is to help leaders, parents, and members know what opportunities there are in the program that enhance their projects.

#### Cyrus High Point 4-H Livestock Judging Award

This is a plaque given to the highest scoring livestock judge. The best three out of four contest scores will be used. The winner is determined on a percentage basis. (Novices are not eligible)

#### Wendy Sheerer Memorial Award

This is a scholarship to OSU Summer Days at OSU. It is given in memory of Wendy Sheerer a 4-Her for eight years in Deschutes County. The application is made through the scholarship process and must accompany the Summer Days registration form. Preference will be given to a 4-H member enrolled in the sheep project.

#### Worlein Rabbit Award

This is a \$25 scholarship provided to a rabbit club member to be used toward the purchase of a high quality, purebred rabbit of the winner's choice of breed. Animals must have a pedigree but do not need to be registered. Applicants must write a paragraph on why they would like to purchase more rabbits and what breed they are interested in.

To learn more about these and other scholarship and award opportunities read your premium book on pages 78 -83.pmj

## Club Activities

If your club is working on an unusual project or participating in a fun interesting community service project call Paty Jager. I would like to write a story about the experience for the local papers. The number is 548-6088 x13.

Jay Zwicker, GRI  
Sales Associate  
541-548-6111  
1-800-660-5485



**REDMOND REAL ESTATE & ASSOC.**  
*The Heart of Central Oregon Since 1976*

*Your Rural Real Estate Specialist!*

1550 W. Highland Avenue  
Redmond, Oregon 97756  
541-548-3953 Res.  
Fax: 541-548-7015  
Email: jay\_zwicker@yahoo.com





# Violence in Today's Movies, TV Shows and Video Games - What Can We Do About It?

Parents, educators and other concerned Americans are asking these questions with a new urgency in the wake of the Sept. 11 terrorist attacks in New York City and Washington, D.C. Some of the answers can be found in a four-part satellite series to be presented on October 8 and 22 and November 5 and 19 at Hitchcock Auditorium on the Central Oregon Community College campus. The series is being produced by Iowa State University Extension to Families and is being sponsored in Bend by Community Youth Connections in collaboration with **Deschutes County 4H**, the Chandler Center for Community Leadership, COCC, and the Samuel S. Johnson Foundation.

"The extensive coverage of the terrorist events of September 11 brings attention to the role that parents and care givers need to play in monitoring what youth are exposed to via entertainment media violence," said Kim Greder, Assistant Professor of Human Development and Family Studies at Iowa State. "Research shows that with repeated exposure to violent video games, television and movies, children become desensitized to real-world violence."

"As a society we are all searching for answers about the increase in violence among our children," she added. "The information provided in this series may hold some of the clues."

Each segment of the series will feature a different expert exploring a different aspect of the topic. Segments include:

- Brad Bushman, Ph.D., on the impact of violent television and movies;
- Craig A. Anderson, Ph.D., on the impact of violent video games;
- L. Rowell Huesmann, Ph.D., on the psychology of media violence and why it has a lasting impact on children; and
- Faith Rogow, Ph.D., on helping parents and children to become critical viewers.

"We want to increase awareness about this topic, debunk some of the myths, and give folks some tangible, practical methods for dealing with violence in the media," Greder said.

Each segment will be presented from 1:30 to 3 p.m. at Hitchcock Auditorium on the Central Oregon Community College campus. The first hour will be devoted to presenting the research and the last half-hour to questions from the nationwide audience.

The series is free and open to the general public. However, available seating is limited to 150, and persons interested in attending should reserve a seat as soon as possible by faxing their name and phone number to Gwenn Levine of the Chandler Center at (541) 383-8002.

For more information, phone Levine at (541) 388-8361 or e-mail [ChandlerCenter@orst.edu](mailto:ChandlerCenter@orst.edu). Or, call David White at 548-6088 x14, [david.white@orst.edu](mailto:david.white@orst.edu)

Founded in 1992, the Chandler Center for Community Leadership is a collaboration of COCC, OSU Extension Service, Portland State University and the Chandler Center. Its mission is to foster community-based leadership and encourage individuals and community groups to take part in governing.

## Lost & Found

Well, just found really

Many items have been left at the office. They'll be finding their way to a local charity soon, so if you've lost something, stop by and check out the pile between Candi & Paty's desks. Ccb

Items include:

- ❖ blue tin cup
- ❖ stuffed seal
- ❖ pepsi water bottle
- ❖ silver watch with blue face, NYNY
- ❖ swerve silver and purple digital watch
- ❖ rat catcher collar with gold pin
- ❖ camera filter Quantaray 58 mm
- ❖ cowboy hat earring
- ❖ purple silk jacket, xs
- ❖ yellow old navy pull over, size 12
- ❖ teal/black reversible LL Bean coat, med
- ❖ Gray hooded sweatshirt, zip up, XL
- ❖ gray, "2000 camp cleawox" sweatshirt, kids L
- ❖ green quilted button up jacket, L
- ❖ blue nylon, Gerry jacket, sm
- ❖ hunt seat saddle cover, black

---

## 2002 Western Region 4-H Leaders Forum

The registration packet for the Leaders Forum has arrived. This event will be held February 6-10 in Great Falls, Montana. Adult 4-H leaders and senior (10-12 grades) 4-H members functioning in the leadership roles will find the Forum an educational and fun event. The packet should have answers to most of your questions. Early-bird registration (\$200) deadline is November 26th, with regular registration (\$225) due December 11, and late registrations (\$275) will be taken until January 2nd.

## Print great digital photos

Managing digital photos for the best possible image quality depends directly on the type of output desired. If you plan to produce photographic-quality prints, image resolution must be much higher than if you're planning to place the photo on a Web page. Following are tips for managing digital photos to produce photo-quality prints.

First, a little background. Digital image resolution has to do with the number of pixels contained in the image file. Image compression is how digital cameras store image files on whatever storage media the camera uses. Digital cameras compress images by reducing the amount of data or pixels in the file.

It's tempting to try to save space on your digital camera's storage card by adjusting the picture quality settings to the lowest resolution and maximum compression. However, according to *Jock Edblom* of Hise Studio in Corvallis, this is a big mistake. For best results, says Edblom, follow these three rules.

1. If you want quality prints, don't shoot pictures at the lowest resolution and maximum compression. You'll be disappointed with the outcome. At least choose a medium resolution and compression rate - the bigger the better.

2. Check your pictures in the field. Although you can't see a lot of detail in the camera's LCD screen, you can tell whether the image is grossly overexposed or underexposed. However, don't be too quick to delete questionable photos. If your camera has enough storage space, keep them for editing when you get back to your computer.

3. If you manipulate the image size with photo-editing software, make sure the image and canvas size fit within your photo finisher's standard print size. The canvas size is the actual height and width, in inches, of the digital image. (Adobe Photoshop<sup>TM</sup> and PhotoDeluxe<sup>TM</sup> software use the term "canvas" to describe this characteristic of an image file; other brands of image manipulation software may use a different term.)

You can change the canvas size as needed to get the desired print output. For example, if you want a 3 x 5-inch print, make the canvas size at least 3 x 5. A smaller-size image can be floated inside a larger canvas size, but an image larger than the canvas size will be cropped. To be on the safe side, make the image size slightly smaller than the print output (canvas) size. This will help ensure that the entire image is printed without unintentional cropping.

CLynn Ketchum and Bob Rost. Oregon State University Extension and Experiment Station Communications. *Communicate!* September/October 2001, No. 184

## Thank You from the Bunny Brigade

The Bunny Brigade would like to THANK ALL those who helped and participated in our 4-H show held on September 15<sup>th</sup>. We had a great turn out from several parts of the state. Our judge Muriel Keyes did a wonderful job. We also want to thank those who supported our Silent Auction.

The Bunny Brigade would like to give THANKS to those who helped raise money for our country's disaster victims by working three carwashes held on September 30<sup>th</sup>. A special thank you to Diane and Brian representing 4-H Bunny Brigade, they were a great help at our S&S Auto carwash; and to the friends of Bunny Brigade members who made the South McDonald's and North Albertson's carwashes and hotdog stand happen. These kids did a lot of hard work and can stand proud as we send \$538 to help our country. Way to go kids!

November 2001 - **Over the Clover** - 5 

## Who's Who

As the new year begins, many leaders will have questions. It sometimes helps to know which person to call depending on your situation, particular question, or project area involved. It saves being bounced around the office. Remember our doors are always open. E-mail is a good way to communicate. And, most of the time you can reach us by phone. Our jobs do take us away from the office. If we aren't here, leave a message and we will get back to you as soon as possible.

David J. White, Deschutes County 4-H Youth Development Faculty, 548-6088 x14, [david.white@orst.edu](mailto:david.white@orst.edu). djw

Over-all Program Management

Natural Resources

Wildlife Stewards

Leadership

Small Animal

Marketing/Promotion

Community Collaborations

Training

Public Issues

Fair

Candi Bothum, Deschutes County 4-H Program Coordinator, 548-6088 x15, [candi.bothum@orst.edu](mailto:candi.bothum@orst.edu)

Horse

Large Animal

Auction

Public Issues

Fair

Editor, *Over the Clover* newsletter

Training

Paty Jager, Deschutes County 4-H Home Economics Program Assistant, 548-6088 x13, [paty.jager@orst.edu](mailto:paty.jager@orst.edu)

Foods

Textiles

Expressive Arts

Home Environment

Volunteer Service Applications

4-H Fair Building Manager

Fair

Training

Recruitment and Placement

Gay Demmer, Deschutes County 4-H Secretary,

548-6088 x11, [gay.demmer@orst.edu](mailto:gay.demmer@orst.edu)

General 4-H Questions

Enrollment

Awards Tracking

Fair Entries

Club Fees

Club Materials

Aimee Van Vleck, Deschutes County 4-H

Wildlife

Stewards Coordinator, 548-6088 x19,

[aimee.vanvleck@orst.edu](mailto:aimee.vanvleck@orst.edu)

School Recruitment

Training

Wildlife Steward Volunteer Placement and

Support

## It's Time to Vote for Friends of 4-H

Thank you to those who submitted nominations. Without a doubt all are deserving of recognition. You will see that some are not on the list. As noted in the October 2001 *OTC*, those eligible to be nominated were individuals outside the traditional volunteer role.

Some of the nominations came with a brief reason. Here they are.

Individual:

- Lori Nickeson - "Lori has volunteered countless hours to the 4-H Dog Program. She has supported the leaders, parents and most all the kids. For as long as I have been part of 4-H Dog, Lori has been volunteering and helping with this project. She is a great role model for parents and kids. She is encouraging to the kids, offers help to them and truly represents the meaning of the 4-H program. I think if you talked with other Dog project members and parents, they will agree that honoring Lori is long overdue."
- Clay Penhollow - "For all the extra stuff he does"
- Redmond Elks - "...what about the ELKS that worked in the 4-H Café at fair." "...they donated their time to run the food booth and 4-H profited from the proceeds."

Business:

- Tomco Electric
- Chapman Huffman - "They have a wall covered with past purchases and have just started a new wall. They don't seem like a huge business and this is a program they are very excited about."
- Awards and Engraving Unlimited - "She's fast, she donates extra above the cost of awards and comes through on short notice."
- Diamond B Tack and Trailer - "They have sponsored many awards and it is through their business that we have had such outstanding awards for our horse project members. In addition to all that they do for the horse program, they also always support members in market animal projects by purchasing market animals. They are, in short, always cheerfully supportive of all of our 4-H'ers and the 4-H program. Thanks Diamond B!"
- Feed Barn - "I vote the Feed Barn for business. He bought sooo many animals at fair and having the feed shop at fair was wonderful."
- Swift Steel - "Bob Swift and Swift Steel have for years been strong supporters of 4-H. They always support the 4-H and FFA Auction and buy several animals. Their sponsorship of our Jackpot and Fair awards is ongoing and put 4-H high on their list of organizations to support."
- Central Oregon Ranch Supply - "The Malotts work with the kids all year long to make their projects work, whether breeding or market animals. They support livestock as well as poultry and the jackpot show and sponsor many, many awards for fair as well as putting on seminars or classes. David never says no. They also buy many animals at the auction, all species."

Please vote for one individual and one business using the following form and return it to the Extension office on or before November 9, 2001.

<p>Individual (circle one):</p> <ul style="list-style-type: none"> <li>· Lori Nickeson</li> <li>· Clay Penhollow</li> <li>· Redmond Elks</li> </ul> <p>Business (circle one):</p> <ul style="list-style-type: none"> <li>· Tomco Electric</li> <li>· Chapman Huffman</li> <li>· Awards and Engraving Unlimited</li> <li>· Diamond B Tack and Trailer</li> <li>· Feed Barn</li> <li>· Swift Steel</li> <li>· Central Oregon Ranch Supply</li> </ul>	<p><b>Friends of 4-H Voting Form</b></p> <p><b>Return on or before November 9, 2001</b> to: Friends of 4-H, 1421 S. Hwy 97, Redmond, OR 97756 or e-mail your vote to: <a href="mailto:david.white@orst.edu">david.white@orst.edu</a>.</p>
--	---

## From the Mouth of a Wise Dog

If a dog were your teacher, you could learn stuff like:

1. When loved ones come home, always run to greet them
2. Never pass up the opportunity to go for a joyride
3. Allow the experience of fresh air and the wind in your face to be pure ecstasy
4. When it's in your best interest, practice obedience
5. Let others know when they've invaded your territory
6. Take naps and stretch before rising
7. Run, romp and play daily
8. Thrive on attention
9. Avoid biting when a simple growl will do
10. On warm days, stop to lie on your back on the grass
11. On hot days, drink lots of water and lay under a shady tree
12. When you're happy, dance around and wag your entire body
13. No matter how often you're scolded, don't buy into the guilt thing and pout - run right back and make friends
14. Delight in the simple joy of a long walk
15. Eat with gusto and enthusiasm. Stop when you've had enough
16. Be loyal
17. Never pretend to be something you're not
18. If what you want lies buried, dig until you find it And MOST of all:
19. When someone is having a bad day, be silent, sit close by and nuzzle them gently.



## County-wide Community Service Day Picked

Saturday, April 13, 2002 has been selected as the county-wide community service day. In previous years, I worked with state, county, city, and non-profit organizations who were looking for help during our day of service.

This year I am going to try something new. The only organized event will take place at the Deschutes County Fair and Expo Center. It will be scheduled for 9 AM to 12 Noon. The project has not been determined. A certain number of people will be necessary to complete the assigned task or tasks. Clubs will have an opportunity to sign up at a future date.

All other community service projects will be left to the individual clubs to plan and implement. I do have a list of contacts I can share if clubs are finding it hard to put something together.

Start thinking of projects you can do. If you need suggestions, don't hesitate to call David White at 548-6088 x14 or e-mail at david.white@orst.edu. djw

## America the Beautiful Fund Offers Free Seeds for Planting "Freedom Gardens"

The America the Beautiful Fund (<http://www.freeseeds.org/>) is a national nonprofit organization started in 1965 to encourage volunteer citizen efforts to protect the natural and historic beauty of America. Over 50,000 projects in all 50 states have been developed and assisted with ABF's help.

In response to the events of September 11th, ABF is providing \$1 million worth of flower, vegetable, and herb seeds to plant "Freedom Gardens" across America. Anyone who wants to sponsor or start a Freedom Garden in their community can receive a grant of 100 to 1,000 free seed packets.

For further information and an application form, visit the program's Web site or send a self-addressed stamped envelope to the Fund's offices.

Contact: America the Beautiful Fund, Dept. 911, 1730 K Street, NW, Suite 1002  
Washington, DC 20006

## 4-H Club Officer Training

Some of you attended a recent tri-county training in Madras. I am glad you were able to attend. I think we can plan on many more training opportunities to be conducted from a tri-county perspective. First, it is a good use of time and expertise from the other counties. Two, it provides an opportunity for members from neighboring counties to come together, make new acquaintances, a think outside the box.

Since was a successful training, one will be offered in Deschutes County on January 3, 2002. Most clubs will have re-registered by this time and will have elected new officers. This is a perfect chance to start out the new year with an outline of how to use elected roles and leadership skills to reach club goals.

The training will be held at the Extension office on Thursday, January 3, 2002 starting at 6:30. Please RSVP to David white at 548-6088 x14 or e-mail david.white@orst.edu. djw



## Don't Miss the 2001 Recognition Dinner

As parents, members, and leaders this night is all about you. It is a way to celebrate the end of a successful year and usher in a new one. You don't have to receive a medal or award to be able to attend. This night is for everyone.

Clay Penhollow will be on hand again to provide attendees with a wonderful pit roast dinner of ham and potatoes. The Deschutes County Leaders' and Parents' Association will provide the tableware, utensils, side dishes, and drinks. Please plan to bring a dessert to share with the others in attendance.

We will recognize special friends of 4-H and honor our members and leaders for their accomplishments. Anthony Jager, this year's Outward Bound member, will be there to share his adventures. Candi's annual slide show will close the evening.

This year's theme is United We Stand. Please plan to have your clubs decorate their tables in a red, white, and blue motif. This year we are asking clubs to decorate the tables they will need for their club **plus one additional table** so our honored guests will have a place to sit. In the past, clubs have pushed tables together so they could sit together. If this year's dinner is anything like last November, we are going to need all the seating space available. So please plan to sit at individual tables.

Speaking of last year, in order to get a grip on the number of people attending, please return the RSVP by Tuesday, November 13, 2001. djw



## Start Thinking About Scholarships

If you are a college-bound senior, now is the time to think about scholarships from the State 4-H Program. These scholarships are offered primarily through the Oregon 4-H Foundation which was founded in 1957 to support the Oregon 4-H program and senior 4-H members as they move from the 4-H program into the next stage of their personal development.

All graduating seniors are invited to apply. A state 4-H Resume is required. Selection is based on GPA and SAT scores, at least three years of 4-H project work, leadership, citizenship, personal 4-H experience, and personal development. For some scholarships additional criteria are needed such as: financial need, recommendations, and college choice. Application deadlines vary. Most are due to the Extension office by March 1, 2002.

Please give me a call for a packet of information. You can reach me at 548-6088 x14 or by using e-mail, david.white@orst.edu. djw

# Record Books, Scrapbooks, and County Medals

Congratulations to all who turned in their record books, scrapbooks and applied for county medals! You all are winners! The following are the champions:

## Record Books

Grand Champion Overall	Amy Mosier
Res Gr Champion Overall	Michelle Mosier
<u>Home Ec</u>	
Jr Ch	Christy Mosier
Jr Res Ch	Megan Larson
Int Ch	Amy Mosier
Int Res Ch	Natasha Luff
Sr Ch	Michelle Mosier
Sr Res Ch	Christalyn Grantier

## Other

Jr Ch	Adam Hunt
Int Ch	Stephanie Grantier
Int Res Ch	Michael Grantier

## Small Animal

Jr Ch	Jennifer Luoma
Res Jr Ch	Kimberly Wesseler
Int Ch	Melissa Shanahan
Int Res Ch	Alison Shanahan
Sr Ch	Kayla Haavisto
Sr Res Ch	Gretchen Peed

## Livestock

Jr Ch	Brandon Hasart
Jr Res Ch	Katelyn Hanf
Int Ch	Madeleine Hasart
Int Res Ch	Haley Hunt
Sr Ch	Kelsey Bailey
Sr Res Ch	Callie Koenig

## Horse

Jr Ch	Rachael Rees
Jr Res Ch	Skyler Strassman
Int Ch	Megan Barrett
Int Res Ch	Heather Moore

## Scrapbooks

Grand Champion	High Desert Horsemen
Res Grand Champion	Emily Stokes

## Individual

Jr Ch	Emily Stokes
Jr Res Ch	Rachael Rees

## Club

Ch	High Desert Horsemen
Res Ch	Lopin' Legends

## County Medals

Megan Barrett	Horse
Christalyn Grantier	Citizenship
Michael Grantier	Shooting Sports
Stephanie Grantier	Foods & Nutrition
Kayla Haavisto	Veterinary Science
Lydia Hoffman	Poultry
Caitlin Mazur	Horse
Amy Mosier	Citizenship
Michelle Mosier	Leadership
Candace Morse	Horse
Alison Shanahan	Citizenship
Melissa Shanahan	Rabbit

# Babe Coe Memorial Scholarship

Donor: Buck Coe Family  
Star Route Box 4  
Maupin, OR 97037

**Number of Scholarships:** One

**Scholarship Value:** \$1000.00

**Background:** This scholarship is presented in the memory of Beverly (Babe) Coe by her husband, Buck Coe, and her daughters, Cathie Lee Coe Moore, Babette Coe Larson and Amber Coe Taaffee. The scholarship is offered as a tribute to Babe Coe's contributions and interest in the 4-H youth of Oregon through an endowment established in the Oregon 4-H Foundation.

Mrs. Coe's greatest interest and contribution was in the development of animal science and homemaking skills in young people. She believed that the philosophy of the 4-H program made a significant contribution in building character, leadership, and citizenship.

## Purpose of Scholarship:

To provide incentive for further education to an exceptional Oregon 4-H member who has shown outstanding participation in 4-H.

To encourage the development of leadership skills, build character and citizenship responsibilities.

To apply 4-H training and experience in choosing a career.

To encourage the development of skills that will contribute to a more efficient, productive, and profitable life.

To provide for recognition of meritorious work and achievement in 4-H and furthering the education of worthy present 4-H members.

To provide assistance to youth with a financial need for post high school education.

## Eligibility:

Applicant must be a 4-H member enrolled during the current year in a 4-H project or activity and have completed a minimum of three years of 4-H including the current year.

Applicant must be a senior in high school and plan to attend a community college, vocational-technical school or a four year college or university which will lead to a college degree or license.

Applicant must use the scholarship in the fall of the year in which it is awarded, to pursue course work to enhance his/her career opportunities.

Applicant must demonstrate financial need.

Applicant must meet Oregon Admission Standards (3.0 GPA or a minimum of 2.75 GPA and a combined score of 850 or above on the SAT or 20 on the ACT).

## State Application Requirements:

1. Oregon 4-H Recognition Resume Form
2. 4-H Story (including how scholarship would be used)
3. Transcript of grades
4. Oregon 4-H Financial Need Form
6. Use a standard (Acco) prong-type fastener with slides in a stiff 8 1/2" X 11"

## 2001 Deschutes County 4-H Members' and Leaders' Recognition Dinner

November 17, 2001  
Deschutes County Fair and Expo Center  
North Sisters Building  
6:00 PM

The \_\_\_\_\_ 4-H Club will be attending the Dinner. Total number of people attending: \_\_\_\_\_

Please return on or before November 13, 2001 to: **Members' and Leaders' Recognition Dinner, 1421 S Hwy 97, Redmond, OR 97756.** Or, email [david.white@orst.edu](mailto:david.white@orst.edu) with your RSVP.

# Foot-and-Mouth Disease

March 2001  
Veterinary Services

Foot-and-mouth disease (FMD) is a severe, highly communicable viral disease of cattle and swine. It also affects sheep, goats, deer, and other cloven-hooved ruminants. FMD is not recognized as a zoonotic disease.

This country has been free of FMD since 1929, when the last of nine U.S. outbreaks was eradicated.

The disease is characterized by fever and blister-like lesions followed by erosions on the tongue and lips, in the mouth, on the teats, and between the hooves. Many affected animals recover, but the disease leaves them debilitated. It causes severe losses in the production of meat and milk.

Because it spreads widely and rapidly and because it has grave economic as well as clinical consequences, FMD is one of the animal diseases that livestock owners dread most.

## What Causes It

The disease is caused by a virus. The virus survives in lymph nodes and bone marrow at neutral pH, but destroyed in muscle when in pH<6.0 i.e. after rigor mortis. The virus can persist in contaminated fodder and the environment for up to one month, depending on the temperature and pH conditions.

There are at least seven separate types and many subtypes of the FMD virus. Immunity to one type does not protect an animal against other types.

## How It Spreads

FMD viruses can be spread by animals, people, or materials that bring the virus into physical contact with susceptible animals. An outbreak can occur when:

- People wearing contaminated clothes or footwear or using contaminated equipment pass the virus to

- susceptible animals.
- Animals carrying the virus are introduced into susceptible herds.
- Contaminated facilities are used to hold susceptible animals.
- Contaminated vehicles are used to move susceptible animals.
- Raw or improperly cooked garbage containing infected meat or animal products is fed to susceptible animals.
- Susceptible animals are exposed to materials such as hay, feedstuffs, hides, or biologics contaminated with the virus.
- Susceptible animals drink common source contaminated water.
- A susceptible cow is inseminated by semen from an infected bull.

## Signs

Vesicles (blisters) followed by erosions in the mouth or on the feet and the resulting excessive salivating or lameness are the best known signs of the disease. Often blisters may not be observed because they easily rupture, leading to erosions.

Some of these other signs may appear in affected animals during an FMD outbreak:

- Temperatures rise markedly, then usually fall in about 2 to 3 days.
- Ruptured vesicles discharge either clear or cloudy fluid and leave raw, eroded areas surrounded by ragged fragments of loose tissue.
- Sticky, foamy, stringy saliva is produced.
- Consumption of feed is reduced because of painful tongue and mouth lesions.
- Lameness with reluctance to move is often observed.
- Abortions often occur. Milk flow of infected cows drops abruptly.
- Conception rates may be low.

Meat animals do not normally regain lost weight for many months. Recovered cows seldom produce milk at their former rates. FMD can lead to myocarditis (inflammation of the muscular walls of the heart) and death, especially in newborn animals.

## Confusion With Other Diseases

FMD can be confused with several similar, but less harmful, diseases, such as vesicular stomatitis, bluetongue, bovine viral diarrhea, and foot rot in cattle, vesicular exanthema of swine, and swine vesicular disease. Whenever mouth or feet blisters or other typical signs are observed and reported, laboratory tests must be completed to determine whether the disease causing them is FMD.

## Where FMD Occurs

While the disease is widespread around the world, North America, Central America, Australia, New Zealand, Chile, and some countries in Europe are considered free of FMD. Various types of FMD virus have been identified in Africa, South America, Asia, and part of Europe.

## Prevention and Control

FMD is one of the most difficult animal infections to control. Because the disease occurs in many parts of the world, there is always a chance of its accidental introduction into the United States.

Animals and animal byproducts from areas known to be infected are prohibited entry into this country.

Livestock animals in this country are highly susceptible to FMD viruses. If an outbreak occurred in the United States, this disease could spread rapidly to all sections of the country by routine livestock movements unless it was detected early and eradicated immediately.

If FMD were to spread unchecked, the economic impact could reach billions of dollars in the first year. Deer and wildlife populations could become infected rapidly and could be a source for reinfection of livestock.

## What You Can Do

You can support U.S. efforts against FMD by:

- Watching for excessive salivating, lameness, and other signs of FMD in your herd; and
- Immediately reporting any unusual or suspicious signs of disease to your veterinarian, to State or Federal animal disease control officials, or to your county agricultural agent.

If FMD should appear in your animals, your report will set in motion an effective State and Federal eradication program.

Your participation is vital. Both the early recognition of disease signs and the prompt notification of veterinary officials are essential if eradication is to be carried out successfully. Your warning may prevent FMD from becoming established in the United States, or, if it does spread, reduce the time and money needed to wipe it out.

## Additional Information

For more information about FMD, contact USDA, APHIS, Veterinary Services Emergency Programs, 4700 River Road, Unit 41, Riverdale, MD 20737-1231 Telephone (301) 734-8073 Fax (301) 734-7817

The APHIS Emergency Operations Center (800) 940\_6524; e-mail: [emoc@aphis.usda.gov](mailto:emoc@aphis.usda.gov)

Current information on animal diseases and suspected outbreaks is also available on the Internet at <http://www.aphis.usda.gov>.

The U.S. Department of Agriculture (USDA) pro-

hibits discrimination in all its programs and activities on the basis of race, color, national origin, sex, religion, age, disability, political beliefs, sexual orientation, or marital or family status. (Not all prohibited bases apply to all programs.) Persons with disabilities who require alternative means for communication of program information (Braille, large print, audiotope, etc.) should contact USDA's TARGET Center at (202) 720-2600 (voice and TDD).

To file a complaint of discrimination, write USDA, Director, Office of Civil Rights, Room 326-W, Whitten Building, 1400 Independence Avenue, SW, Washington, DC 20250-9410 or call (202) 720-5964 (voice and TDD). USDA is an equal opportunity provider and employer.



We all have a choice in life: we may approach it as a creator or a critic, a lover or a hater, a giver or a taker.





# THE LEE SIDE

## It's about to Get "Wild" in Deschutes County

You may remember in the last issue of *Over the Clover* that a new 4-H program was coming to Deschutes County. Well, it's here, and the Wildlife Stewards are gearing up for an eventful pilot year.

The Wildlife Stewards program began in Portland over six years ago with the goal of promoting student-learning, community and parent involvement, native wildlife awareness and stewardship among youth. This was accomplished by creating wildlife habitats on school grounds, thus enabling students, teachers and community volunteers to experience hands-on learning in an interactive outdoor setting. With wide spread interest throughout Portland and the Willamette Valley, the Wildlife Stewards program has grown to include over 52 participating schools with over 180 trained Wildlife Steward Volunteers.

Today, with support from the National Science Foundation, the Wildlife Stewards program is expanding statewide. Deschutes County 4-H is only one of many areas within Oregon that will be implementing the Wildlife Stewards program for the first time. Within the first year of the project, four schools will begin the process of establishing an active habitat on site. An active habitat will include native plants, that will attract native wildlife, a place for on-going learning and experimentation, and a wildlife team consisting of at least one trained Wildlife Steward, parent and community volunteers, teachers and students.

Habitat planning, creation and maintenance are all coordinated by the Wildlife Steward Volunteer assigned to each school. In order to become a Wildlife Steward volunteer, qualified applicants must go through a 25 hour training, which will be held February 8,9, and 10 in Bend. Trained Volunteers are then asked to pay back 50 service hours to their community habitat in exchange for the training they receive. These volunteers serve as the primary resource for the school habitat team of volunteers.

Over the next three years, the Wildlife Stewards program hopes to expand to over twenty schools in Deschutes County, including alternative school programs and magnet schools. If you would like further information about the Wildlife Stewards program in general, or, are interested in learning how you can become a Wildlife Steward Volunteer, please contact Aimee Van Vleck at the OSU extension office in Redmond: 541-548-6088 ext. 19, [aimee.vanvleck@orst.edu](mailto:aimee.vanvleck@orst.edu). alv

## Discovery Passes to the High Desert Museum

### Offered to 4-H

The Discovery Pass program at The High Desert Museum began in 2001 with the help of generous donors. A Discovery Pass provides free admission for targeted groups, families, or individuals who may otherwise be unable to experience a visit to the Museum. Various Central Oregon organizations work in partnership with the Museum to distribute passes – providing their members or clients with a special opportunity. Last year, 2,000 Discovery Passes were circulated throughout the community.

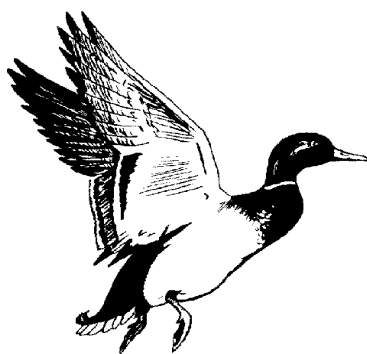
The same will hold true this year. Six passes will be available to the 4-H program for group use. The passes are a great way for clubs to take a trip with another clubs. Passes are good for up to 30 people. If you have any questions about the program, please contact The High Desert Museum at (541) 382-4754. You can also contact David White at 548-6088 x14.

These could go fast. So reserve your pass now. It is first come-first served. Djw



## A Brief Introduction

There is a new team member on the 4-H staff in Deschutes County. Aimee Van Vleck recently joined the team as the Deschutes County 4-H Wildlife Stewards Volunteer Coordinator, and has quickly adapted to her new role within the organization. With the new position, Aimee will help establish an exciting program in Central Oregon, implementing wildlife habitat sites on school properties. As the Volunteer Coordinator, Aimee will work closely with trained Wildlife Stewards, school administrators and faculty, community volunteers and other local resources to create a successful pilot program for Deschutes County.



**The Deschutes County 4-H Wildlife Stewards Volunteer Coordinator position was made possible by a grant from AmeriCorps and the Corporation for National Service, of which Aimee is a member. These service programs strive to strengthen communities by addressing critical environmental and educational needs through service, learning, collaboration, leadership development, stewardship and diversity.**

As a resident of Bend, Aimee has come to understand some of the specific needs within the Central Oregon community. Aimee is a graduate of Willamette University where she received a Bachelor of Arts degree in Rhetoric and Media Studies. With her background and knowledge of local issues, Aimee hopes that the Wildlife Stewards program will enhance community involvement and awareness in the school environment, while improving the educational experience for students and teachers alike. alv


**For Almost anything. . .**  
**Big R's Got It!**  
 Tack, Animal Health,  
 Sporting Goods, Clothing,  
 Footwear, Steel, Hardware,



**BIG R STORES**

Open 7 days a week  
 S. Hwy 97  
 Redmond

The best portion of a good person's life is the little, nameless, unremembered acts of kindness and of love. - *William Wordsworth*



# RESULTS FROM COUNTY AND STATE FAIR



## Results for Press Release Deschutes County Fair

Name	City	Ribbons
Class 771103010) Columbia, Spring Ewe Lamb (Sheep)		
GAMBOA, VERONICA P.	TERREBONNE	CH, B
Class 771103020) Columbia, Fall Ewe Lamb (Sheep)		
FINE, JACK T	BEND	RC, B
Class 77115010) Dorset, Fall Ewe Lamb (Sheep)		
GRAFTON, SARAH M	BEND	RC, B
GRAFTON, AIMEE L	BEND	B
Class 771105020) Dorset, Fall Ewe Lamb (Sheep)		
PAGANO, KRISTA	SISTERS	CH, B
Class 771106020) Hampshire, Yearling Ewe (Sheep)		
CAIN, CASSIE D	BEND	B
Class 771106030) Hampshire, Yearling Ewe (Sheep)		
SWIFT, ASHLIE M	REDMOND	CH, B
Class 771106040) Hampshire, Producing Ewe (Sheep)		
BREITENSTEIN, JACK W	BEND	RC, B
Class 771106050) Hampshire, Spring Ram Lamb (Sheep)		
BREITENSTEIN, JACK W.	BEND	CH, B
Class 771110010) Romney, Yearling Ewe (Sheep)		
MCGILLIVRAY, ERICA	BEND	RC, B
Class 771110030) Romney, Yearling Ewe (Sheep)		
SARGENT, STACEY M	REDMOND	GC, CH, B
Class 771110040) Romney Producing Ewe (Sheep)		
MCGILLIVRAY, ERICA	BEND	CH, B
Class 771111010) Shropshire, Yearling Ewe (Sheep)		
MILLER, HANNAH	BEND	B
Class 771111030) Shropshire, Yearling Ewe (Sheep)		
DAVIS, BECCA M	BEND	CH, B
Class 771111060) Sheep, Shropshire, Fall Ram (Sheep)		
MILLER, HANNAH	BEND	CH, B
MILLER, HANNAH,	BEND	RC, B
Class 771113010) Suffolk, Spring Ewe Lamb (Sheep)		
CAIN, CASSIE D	BEND	B
KITCHER, BRANDI M	BEND	B
DANIEL, JACK E	BEND	R
BURNETTE, KARISSA R	REDMOND	R
CLARK, SAMANTHA E	TERREBONNE	R
Class 771113020) Fall Ewe Lamb (Sheep)		
GAMBOA, ASHLIE M	REDMOND	RC, B
KENNEDY, MICHELLE P	BEND	B
Class 771113030) Suffolk, Yearling Ewe (Sheep)		
SWIFT, ASHLIE M	REDMOND	RC, B
CAIN, CASSIE D	BEND	B
BREITENSTEIN, JACK W	BEND	R
KEETON, BETH A	SISTERS	R
Class 771113040) Suffolk, Producing Ewe (Sheep)		
DANIEL, JACK E	BEND	B
FINE, JACK T	BEND	B
KENNEDY, MICHELLE P	BEND	B
CLARK, SAMANTHA E	TERREBONNE	B
PARLIN, STEPHANIE	REDMOND	R
CLARK, ALEXANDER R	TERREBONNE	R
Class 771113050) Suffok, Spring Ram Lamb (Sheep)		
KENNEDY, MICHELLE P	BEND	GC, CH, B
CLARK, ALEXANDER R	TERREBONE	RC, B
Class 771114050) Other Breeds, Spring Ram Lam (Sheep)		
WICKERSHAM, AMY L	REDMOND	B
WICKERSHAM, JENNIE M	REDMOND	B
Class 771115010) Crossbreds, Spring Ewe Lamb (Sheep)		
PUCETTI, JESSICA N	REDMOND	CH, B
PUCETTI, JESSICA N	REDMOND	RC, B
BOATMAN, CRAIG S	BEND	B

FINE, JACK T	BEND	B
GRAFTON AIMEE L	BEND	B
MASTRUDE, KAYLA L	BEND	B
PORTER, DAVID M	BEND	B
TUMA, EMILY N	BEND	B
KLEIN, JOSH Z	REDMOND	B
BONDSTEEL, HEATHER T	TERREBONNE	B
HOLLOWELL, BARON J	BEND	B
REGNIER, KIMBERLY A	BEND	R
COYNER, KATIE	REDMOND	R
Class 771115030) Crossbreds, Yearling Ewe (Sheep)		
DRAGT, NICHOLAS G	BEND	B
DUGGINS, TRAVIS M	BEND	B
HUNT, ADAM J	BEND	B
TUMA, EMILY N	BEND	B
MILLS, AMY N	REDMOND	B
WICKERSHAM, AMY L	REDMOND	R
GATES, PRESTON J	SISTERS	R
Class 771115040) Crossbreds, Producing Ewe (Sheep)		
HOLMES, AMBER D	BEND	GC, CH, B
HUNT, ADAM J	BEND	B
SWIFT, ASHLIE M	REDMOND	B
DUGGINS, TRAVIS M	BEND	R
MASTRUDE, KAYLA L	BEND	R
WICKERSHAM, JENNIE M	REDMOND	R
Class 771115050) Crossbreds, Spring Ram Lamb (Sheep)		
DANIEL, JACK E	BEND	CH, B
WICKERSHAM, JENNIE M	REDMOND	RC, B
WICKERSHAM, AMY L	REDMOND	B
Class 771115070) Crossbred, Yearling Ram (Sheep)		
MCGILLIVRAY, JONATHAN	BEND	CH, B
Class 77116010) Black Sheep (Natural Colored Wool Class), Spring E (Sheep)		
MCGILLIVRAY, CAMERON	BEND	B
GATES, PRESTON J	SISERS	B
Class 771200040) Sheep, Club Flock (Sheep)		
HIGH DESERT LIVESTOCK	REDMOND	CH, B
DESERT WIOOLIES	REDMOND	B
HIGH DESERT SHEEP	REDMOND	B
CLOVERDALE LIVESTOCK	SISTERS	B
Class 771200050) Sheep, Born & Bred in Oregon (Sheep)		
KENNEDY, MICHELLE P	BEND	CH, B
SWIFT, ASHLIE M	REDMOND	RC, B
CLARK, SAMANTHA E	TERREBONNE	B
Class 771211030) Shropshire, 4-H Member's Flock (Sheep)		
MILLER, HANNAH	BEND	CH, B
Class 771213020) Suffolk, Ewe and One Produce (Sheep)		
DANIELS, JACK E	BEND	B
FINE, JACK T	BEND	B
KENNEDY, MICHELLE P	BEND	B
CLARK, ALEXANDER R	TERREBONNE	B
PARLIN, STEPHANIE	REDMOND	R
CLARK, SAMANTHA E	TERREBONNE	R
Class 771213030) Soffolk, 4-H Member's Flock (Sheep)		
KENNEDY, MICHELLE P	BEND	B
PARLIN, STEPHANIE	REDMOND	R
Class 771215020) Crossbred, Ewe and One Produce (Sheep)		
DUGGINS, TRAVIS M	BEND	B
HOLMES, AMBER D	BEND	B
SWIFT, ASHLIE M	REDMOND	B
Class 771300000) Sheep, Market (Sheep)		
HOLMES, AMBER D	BEND	RG, CH, B
KENNEDY, EMILY E	BEND	RC, B
BALLENGER, KAYLA R	BEND	B
BOATMAN, CLOE O	BEND	B
BOATMAN, CRAIG S	BEND	B
BREITENSTEIN, JACK W.	BEND	B
CAIN, CASSIE D	BEND	B
CARLSON, CAITLINE E	BEND	B
CHATHAM, BRANDON	BEND	B
CHATHAM, HOUSTON	BEND	B



# RESULTS FROM COUNTY AND STATE FAIR



## Class 771300000) Sheep, Market (Sheep)

CHILDRESS, HAILIE C	BEND	B
DANIEL, JACK E	BEND	B
DRAGT, NICHOLAS G	BEND	B
DUGGINS, TRAVIS M	BEND	B
FINE, JACK T	BEND	B
HASART, BRANDON T	BEND	B
HENRY, ASHLEY E	BEND	B
HOLLOWELL, BARON J	BEND	B
HOLLOWELL, JORDAN D	BEND	B
HUNT, ADAM J	BEND	B
HUNT HALEY A	BEND	B
JAPPERT, CHARITY A	BEND	B
KENNEDY, MICHELLE P	BEND	B
KIRK-GREEN, JEREMY W	BEND	B
LATHAM, JUSTIN L	BEND	B
MARKHAM, MACY C	BEND	B
MILLER, HANNAH	BEND	B
O'NEAL, BOBBY D	BEND	B
O'NEAL, STEPHANIE A	BEND	B
PATTERSON, TYLER	BEND	B
PULZONE, ANNIE J	BEND	B
SHEELEY, ALEXIS	BEND	B
SHEELEY, COURTNEY	BEND	B
SHEELEY, HANNAH	BEND	B
TUMA, EMILY N	BEND	B
DIAZ, MANDY M	LAPINE	B
HASELIP, TRENTON G	LAPINE	B
LEWIS, JUSTIN M	LAPINE	B
RODERICK, LINDSEY N	LAPINE	B
TESTERMAN, JORDAN R	LAPINE	B
VOWELL, E LOUIS H	LAPINE	B
VOWELL, SARAH S	LAPINE	B
BURNETTE, KARISSA R	REDMOND	B
EVAN, JACOB M	REDMOND	B
LARSON, DARYLE R	REDMOND	B
MCBRIDE, KAYLEE K	REDMOND	B
MCBRIDE, KEEGAN K	REDMOND	B
NORDSTROM, SAMMY K	REDMOND	B
NORDSTROM, TYREL R	REDMOND	B
PARLIN, STEPHANIE	REDMOND	B
PEDERSEN, LINDSAY	REDMOND	B
PUC CETTI, JESSICA N	REDMOND	B
SWIFT, ASHLIE M	REDMOND	B
WEILACHER, ASHLEY E	REDMOND	B
WESTENDORF, LAUREL A	REDMOND	B
BOWEN, KYLE M	SISTERS	B
CUNNINGHAM, CARLY C	SISTERS	B
DOWNING, GARRETT L	SISTERS	B
KEETON, BETH A	SISTERS	B
LEASON, JOHN	SISTERS	B
LEASON, JOSH	SISTERS	B
LEASON, TORY	SISTERS	B
PAGANO, KRISTA	SISTERS	B
WEBSTER, TAYLOR B	SUNRIVER	B
BONDSTEEL, APRIL S	TERREBONNE	B
GAMGOA, SARA R	TERREBONNE	B
KOOMEN, CHRISTOPHER	TERREBONNE	B
TRAVIS, TONYA	TERREGONNE	B
CALIGURE, BRIGETTE N	BEND	R
COLVIN, JENNIFER L	BEND	R
DAVIS, BECCA M	BEND	R
DAVIS, JONATHAN D	BEND	R
DECKER, SARAH C	BEND	R
GRAFTON, AIMEE L	BEND	R
GRAFTON, SARAH M	BEND	R
GREEN, MALISSA R	BEND	R
HAGAN, CASEY J	BEND	R
HAGAN, SEAN E	BEND	R
HASART, MADDIE L	BEND	R
JOHNSTON, LEANNE E	BEND	R
MARICLE, HEIDI	BEND	R
MASTRUDE, KAYLA L	BEND	R
MCGILLIVRAY, CAMERON	BEND	R
MCGILLIVRAY, JONATHON	BEND	R
MULKEY, SYDNEY L	BEND	R
PERRINE, BRANDON M	BEND	R
PORTER, DAVID M	BEND	R
REGNIER, KIMBERLY A	BEND	R
SAUL, GARRET A	BEND	R
SAUL, JESSE A	BEND	R

VARDAMAN, ASHLYNN P	BEND	R
VARDAMAN, HAYDEN E	BEND	R
CAVENDER ADAM K	CROOK RIVER	R
HUMMER, ADAM R	LAPINE	R
HUMMER, AMBER	LAPINE	R
JAMES, DANIELLE F	LAPINE	R
RODERICK, JESSICA D	LAPINE	R
SHIRK, TRICIA D	LAPINE	R
VOWELL, EMILY R	LAPINE	R
WILLIAMS, KYLSE L	LAPINE	R
YOUNG, SCOTT M	LAPINE	R
WAGNER, KENDRA	POWELL BUTTE	R
WHITAKER, CASSY R	POWELL BUTTE	R
ANDYKE, TYLER J	REDMOND	R
BROWN, DUSTIN	REDMOND	R
CONROY-JOSEPH, BRENNAN	REDMOND	R
COYNER, KATIE	REDMOND	R
DUFFY, BEN W	REDMOND	R
EVAN, JEREMY M	REDMOND	R
JONES, KELLI	REDMOND	R
KLEIN, JORDAN M	REDMOND	R
KLIEN, JOSH Z	REDMOND	R
KOON, HEATHER R	REDMOND	R
LATENSER, KARA J	REDMOND	R
NEET, ABBY A	REDMOND	R
NEET, LAURA	REDMOND	R
PEDERSEN, CAMILLE	REDMOND	R
SARGENT, STACEY M	REDMOND	R
SEITZ, LACEY	REDMOND	R
SEITZ, MATT	REDMOND	R
WALKER, CHASSIE R	REDMOND	R
WEILACHER, LORIN III	REDMOND	R
WICKERSHAM, AMY L	REDMOND	R
WICKERSHAM, JENNIE M	REDMOND	R
GATES, PRESTON J	SISTERS	R
SMALL, MITCHELL D	SISTERS	R
BONDSTEEL, HEATHER T	TERREBONNE	R
CLARK, SAMANTHA E	TERREBONNE	R
DAVIS, JESSIC	TERREBONNE	R

## Class 771407000) Romney Wool (Sheep)

HAGAN, SEAN E	BEND	CH, B
---------------	------	-------

## Class 771410000) Suffolk Wool (Sheep)

DANIEL, JACK E	BEND	CH, B
KITCHER, BRANDI M	BEND	RC, B

## Class 771413000) Crossbred (black face) Wool (Sheep)

MCGILLIVRAY, CAMERON	BEND	GC, CH, B
MCGILLIVRAY JONATHAN	BEND	RC, B
WICKERSHAM, JENNIE M	REDMOND	R

## Class 771414000) Colored Fleece Wool (Sheep)

MCGILLIVRAY, ERICA	BEND	RG, CH B
HAGAN, CASEY J	BEND	RC, B

## Class 771500000) Sheep, Showmanship, Novice (Sheep)

BOATMAN, CLOE O	BEND	CH, B
MILLS, AMY N	REDMOND	RC, B
BALLENGER, KAYLA R	BEND	B
CARLSON, CAITLIN E	BEND	B
DAVIS, JONATHAN D	BEND	B
DECKER, SARAH C	BEND	B
HENRY, ASHLEY E	BEND	B
HOLLOWELL, BARON J	BEND	B
KITCHER, BRANDI M	BEND	B
MCGILLIVRAY, CAMERON	BEND	B
PERRIN, CAMILLE L	BEND	B
PORTER, DAVID M	BEND	B
REGNIER, WARREN T	BEND	B
CAVENDER, ADAM K	CROOKED RIVER	B
HASELIP, TRENTON G	LAPINE	B
SHIRK, TRICIA D	LAPINE	B
YOUNG, SCOTT M	LAPINE	B
ANDYKE, TYLER J	REDMOND	B
COYNER, KATIE	REDMOND	B
KLEIN, JORDAN M	REDMOND	B
KOON, HEATHER R	REDMOND	B
LARSON, DARYL R	REDMOND	B
LATHENSER, KARA J	REDMOND	B
NEET, ABBY A	REDMOND	B
PETERSON, TAYLOR J	REDMOND	B
WALKER, CHASSIE R	REDMOND	B



# RESULTS FROM COUNTY AND STATE FAIR



## Class 771500000) Sheep, Showmanship, Novice (Sheep)

WEILACHER, ASHLEY E	REDMOND	B
WEILACHER, LORIN III J	REDMOND	B
CUNNINGHAM, CARLY C	SISTERS	B
DOWNING, GARRETT L	SISTERS	B
LEASON, JOHN	SISTERS	B

PAGANO, KRISTA	SISTERS	B
WEBSTER, TAYLOR B	SUNRIVER	B
BONDSTEEL, HEATHER T	TERREBONNE	B
CLARK, ALEXANDER R	TERREBONNE	B
GAMBOA, VERONICA P	TERREBONNE	B
KOOMEN, CHRISTOPHER	TERREBONNE	B

## Class 771500001) Sheep, Showmanship, Junior (Sheep)

KENNEDY, EMILY E	BEND	CH, B
SWIFT, ASHLIE M	REDMOND	RC, B
CHILDRESS, HAILIE C	BEND	B
HAGAN, SEAN E	BEND	B
HASART, BBRANDON T	BEND	B
HOLLOWELL, JORDAN D	BEND	B
HUNT, ADAM J	BEND	B
MARICLE, HEIDI	BEND	B
MARKHAM, MACY C	BEND	B
MULKEY, SYDNEY L	BEND	B
PATTERSON, TYLER	BEND	B
PERRINE, BRANDON M	BEND	B
SHEELEY, HANNAH	BEND	B
TUMA, EMILY N	BEND	B
VARDAMAN, HAYDENE	BEND	B
HUMMER, ADAM R	LAPINE	B
VOWELL, LOUIS H	LAPINE	B
WAGNER KENDRA	POWELL BUTTE	B
BROWN, DUSTIN	REDMOND	B
CONROY-JOSEPH, BRENNAN M,	REDMOND	B
EVAN, JACOB M	REDMOND	B
EVAN, JEREMY M	REDMOND	B
NORDSTROM, TYREL R	REDMOND	B
PEDERSEN, CAMILLE	REDMOND	B
BOWEN, KYLE M	SISTERS	B
GATES, PRESTON J	SISTERS	B
KEETON, BETH A	SISTERS	B
KEETON, CASSIDY B	SISTERS	B
SMALL, MITCHELL D	SISTERS	B
BONDSTEEL, APRIL S	TERREBONNE	B
GAMOA, SARA R	TERREBONNE	B

## Class 771500003) Sheep Showmanship, Senior (Sheep)

HOLMES, AMBER D	BEND	CH, B
DANIEL, JACK W	BEND	RC, B
BREITENSTEIN, JACK W	BEND	B
CHATHAM, BRANDON	BEND	B
DRAGT, NICHOLAS G	BEND	B
GRAFTON, AIMEE L	BEND	B
GREEN, MALISSA R	BEND	B
JAPPERT, CHARITY A	BEND	B
KIRK-GREEN, JEREMY W	BEND	B
MCGILLIVRAY, ERICA	BEND	B
MILLER, HANNAH	BEND	B
O'NEAL, STEPHANIE A	BEND	B
PULZONE, ANNIE J	BEND	B
REGNIER, KIMBERLY A	BEND	B
SAUL, JESSE A	BEND	B
SHEELEY, ALEXIS	BEND	B
DIAZ, MANDY M	BEND	B
LEWIS, JOE M	LAPINE	B
LEWIS, JOE M	LAPINE	B
VOWELL, SARAH S	LAPINE	B
JONES, KELLI	REDMOND	B
MCBRIDE, KAYLEE K	REDMOND	B
SEITZ, MATT	REDMOND	B
LEASON, JOSH	SISTERS	B
LEASON, TORY	SISTERS	B
DAVIS, JESSICA	TERREBONNE	B
TRAVIS, TONYA	TERREBONNE	B

## Class 771500002) Sheep Showmanship, Intermediate (Sheep)

CAINE, CASSIE D	BEND	GC, CH, B
HUNT, HALEY A	BEND	RG, RC, B
BOATMAN, CRAIG S	BEND	B
CHATHAM, HOUSTON	BEND	B
COLVIN, JENNIFER L	BEND	B
DAVIS, BECCA M	BEND	B
DUGGINS, TRAVIS M	BEND	B
FINE, JACK T	BEND	B
GRAFTON, SARAH M	BEND	B
HAGAN, CASEY J	BEND	B
HASART, MADDIE L	BEND	B
JOHNSTON, LEANNE E	BEND	B
KENNEDY, MICHELLE P	BEND	B
LATHAM, JUSTIN L	BEND	B
MARKHAM, MATT D	BEND	B
MASTRUDE, KAYLA L	BEND	B
MCGILLIVRAY, JONATHAN	BEND	B
O'NEAL, BOBBY D	BEND	B
PERRINE, MEGAN E	BEND	B
SAUL, GARRET A	BEND	B
SHEELEY, COURTNEY	BEND	B
VARDAMAN, ASHLYNN	BEND	B
HUMMER, AMBER	LAPINE	B
JAMES, DANIELLE F	LAPINE	B
RODERICK, JESSICA D	LAPINE	B
TESTERMAN, JORDAN R	LAPINE	B
VOWELL, EMILY R	LAPINE	B
WILLIAMS, KYLE	LAPINE	B
WHITAKER, CASSY R	POWELL BUTTE	B
BURNETTE, KARISSA R	REDMOND	B
DUFFY, BEND W	REDMOND	B
MCBRIDE, KEEGAN K	REDMOND	B
NEET, LAURA	REDMOND	B
NORDSTROM, SAMMY K	REDMOND	B
PARLIN, STEPHANIE	REDMOND	B
PEDERSEN, LINDSAY	REDMOND	B
PUC CETTI, JESSICA N	REDMOND	B
SARGENT, STACEY M	REDMOND	B
SEITZ, LACEY	REDMOND	B
WESTENDORF, LAUREL A	REDMOND	B
WICKERSHAM, AMY L	REDMOND	B
WICHERSHAM, JENNIE M	REDMOND	B

## Class 771700105) Sheep, Team Fitting, Beginner (Sheep)

CAIN, CASSIE D	BEND	CH, B
BONDSTEEL, APRIL S	TERREBONNE	CH, B
DANIEL, JACK E	BEND	CH, B
DRAGT, NICHOLAS G	BEND	RC, B
JAPPERT, CHARITY A	BEND	RC, B
KITCHER, BRANDI M	BEND	RC, B
SAUL, GARRET A	BEND	RC, B
SAUL, JESSE A	BEND	RC, B

## Class 73102010) Pullet, APA and ABA Standard Bred - Bantam (Poultry)

GREEN, MALISSA R	BEND	RC, B
GREEN, MALISSA R	BEND	B
GREEN, MALISSA R	BEND	B

## Class 731102020) Cockerel, APA and ABA Standard Bred - Bantam (Poltry)

GREEN, MALISSA R	BEND	CH, B
GREEN, MALLISA R	BEND	B

## Class 731102030) Hen, APA and ABA Standard Bred - Bantam (Poultry)

O'NEAL, STEPHANIE A	BEND	GC, CH, B
Special Awards: ACHOO Paaso Award		
GREEN, MALLISA R	BEND	RC, B
O'NEAL, STEPHANIE A	BEND	B
O'NEAL, STEPHANIE	BEND	B
ERB, ALICA M	CROOKER RIVER	B

## Class 731401020) Chicken, Brown Eggs (Poultry)

PLEDGER, PAIGE L	BEND	CH, B
------------------	------	-------

## Class 731500002) Poultry Showmanship, Intermediate (Poultry)

ERB, ALICIA M	CROOKED RIVER	B
---------------	---------------	---

## Class 731500003) Poultry Showmanship, Senior (Poultry)

O'NEAL, STEPHANIE A	BEND	RC, B
GREEN, MALISSA R	BEND	B

## Class 732105020) Doves, Young Cock (Pigeons)

ERB, ALICIA M	CROOKED RIVER	CH, B
---------------	---------------	-------

## Class 761114080) Lop (English), Senior Buck (Rabbits)

SILBAUGH, NIC	BEND	R
---------------	------	---

## Class 76112110) American Fuzzy Lop, Junior Doe (Rabbits)

SILBAUGH, NICOLE K	BEND	CH, B
--------------------	------	-------



**Test Your Knowledge**

Class 761123110) Angora (French), Senior Doe (Rabbits) ECKES, KIM BEND	R	1.	How many breeds of cattle are available to beef producers in the U.S.? A. Over 30 B. Over 100 C. Over 60
Class 761128110) Dutch, Senior Doe (Rabbits) TONSFELDT, KAREN BEND TONSFELDT, KAREN BEND TONSFELDT, KAREN BEND	B B B	2.	The amount of marbling in the ribeye is divided into nine degrees? Name them, lowest to highest.
Class 761134110) Himalayan, Senior Doe (Rabbits) MCGILLIVRAY, ERICA BEND	B		<u>Degree of Marbling</u> <u>Quality Grade</u>
Class 761134130) Himalayan, Senior Buck (Rabbits) TONSFELDT, KAREN BEND	B		Practically devoid Traces _____
Class 761134110) Himalayan, Senior Doe (Rabbits) MCGILLIVRAY, ERICA BEND MCGILLIVRAY, ERICA BEND	RC, B B		Slight _____ Small _____
Class 761134130) Himalayan, Senior Buck (Rabbits) MCGILLIVRAY, ERICA BEND MCGILLIVRAY, ERICA BEND	B B	3.	Modest _____ Moderate _____ Slightly abundant _____ Moderately abundant _____ Abundant _____
Class 761135100) Jersey Wooley, Junior Doe (Rabbits) LUOMA, KAILEY R BEND	B	4.	What does the term "Eviscerate" mean?
Class 761135110) Jersey Wooley, Senior Doe (Rabbits) ECKES, KIM BEND	R	4.	What kinds of digestive systems do the following animals have? Ruminant or Monogastric?
Class 761135130) Jersey Wooley, Senior Buck (Rabbits) LUOMA, KAILEY R BEND	B		Bovine _____ Sheep _____ Swine _____ Chickens _____ Horses _____
Class 761136100) Lop (Holland), Junior Doe (Rabbits) RUBLE, LINDSAY M BEND	B	5.	Name two kinds of sheep in the following categories...
Class 761136110) Lop (Holland), Senior Doe (Rabbits) RUBLE, LINDSAY M BEND RUBLE, LINDSAY M BEND	B B		Fine Wool _____ Medium Wool _____ Long Wool _____
Class 761136120) Lop (Holland), Senior Buck (Rabbit) RUBLE, LINDSAY M BEND	B	6.	How long must the tail be on your sheep if it's born Jan 1, 2000 or later and you want to show it in 4-H at the Deschutes County fair?
Class 761137100) Lop (Mini), Junior Doe (Rabbits) SHANAHAHAN, MELISSA G BEND SHANAHAHAN, ALISON D BEND SHANAHAHAN, MILLISA G BEND SHANAHAHAN, MELISSA G BEND	RC, B B B B	7.	In a normal lamb birth presentation, what would you see first? 1. Head 2. Front feet 3. Rear feet
Class 761137130) (Mini), Senior Buck (Rabbit) DOVER, KATELYNE R BEND SHANAHAHAN, ALISON D BEND	B B	8.	What is the difference between a market animal and a production animal?
Class 76113810) Mini Rex, Senior Doe (Rabbits) REWICK, KATIE BEND	R	9.	What does the term "conformation" mean?
Class 761500002) Rabbit Showmanship, Intermediate (Rabbits) DOVER, KATELYNE R BEND LUOMA, KAILEY R BEND OSGOOD, ELISA E BEND RUBLE, LINDSAY M BEND SHANAHAHAN, ALISON DE BEND SHANAHAHAN, MELISSA G BEND SILBAUGH, NICOLE K BEND TONSFELDT, KAREN BEND ECKES, KIM BEND	B B B B B B B B R	10.	If you're preparing your lamb for fair and notice thick crusts of scabs on the lips and nostrils, what should you do?
Class 761500003) Rabbit Showmanship, Senior (Rabbits) MCGILLIVRAY, ERICA BEND REWICK, KATIE BEND SILBAUGH, NIC BEND	B B B	11.	What's the average "at rest temperature" for the following animals? Pulse rate?
Class 761114080) Lop (English, Senior Buck (Rabbits) SILBAUGH, NIC BEND	CH,B		<u>Temp</u> <u>Pulse</u>
Class 761115020) Lop (French), Junior Doe (Rabbits) MARGO, ERICA A BEND SMITH MARIAH J BEND	RC, B B		Horse _____ Cow _____ Pig _____ Sheep _____ Dog _____ Cat _____ Chicken _____
Class 761115040) Lop (French), Senior Doe (Rabbits) MARGO, WERICA A BEND SMITH, MARIAH J BEND SMITH, MARIAH J BEND BURK, KYLIE A REDMOND	CH,B B B B	12.	Define the terms "barrow" & "gilt."
Class 761115060) Lop (French), Junior Buck (Rabbits) SMITH, MARIAH J BEND	B	13.	What part of the pig supplies us with the majority of our ham? 1. Loin 2. Shoulder 3. Leg
		14.	What is the average gestation period of a swine?
		15.	Should you feed your market pig "uncooked leftovers?"
		16.	What does the term "progeny" mean?
		17.	When showing a dairy goat would you use a ... 1. Cane 2. Collar 3. Leash 4. Nothing
		18.	What animal does "mohair" come from?
		19.	What's the normal, average T.P.R. (temperature, pulse, respiration) of a goat?
		20.	What does the term "market value" mean?
		21.	What are the six species of animals sold at the Kiwanis 4-H/FFA livestock auction?

Check your answers in the next edition of the *Over the Clover*.



Thanks so much for the many reminders of my day off on Tuesday. Many of you who've seen me at the office on Tuesday have given friendly reminders. Thanks for reminding me and letting me know it's OK to do some other things. Your comments are appreciated. I'm enjoying the time and seem to be getting a bit more organized and prepared. The day out during the week has really helped. Thanks for understanding.



## THANK YOU!

The Bunny Brigade would like to THANK all those who helped and participated in our 4-H show held on September 15<sup>th</sup>. We had a great turn out from several parts of the state. Our judge Muriel Keyes did a wonderful job. We also want to THANK those who supported our Silent Auction.

The Bunny Brigade would like to give THANKS to those who helped raise money for our country's disaster victims by working three carwashes held on September 30<sup>th</sup>. A special thank you to Diane and Brian representing 4-H - they were a great help at our S&S Auto carwash; and to the friends of Bunny Brigade members who made the South McDonald's and North Albertson's carwashes and hotdog stand happen. These kids did a lot of hard work and can stand proud as we send \$538 to help our country. Way to go kids!

## What 4-H Means to Me

by: Rachael Rees

To me 4-H means people helping people. Some day I want to do something with horses as a career. I know that 4-H has and will continue to make a positive influence on myself and others.

4-H has taught me many things:

- Patience - With myself, others, and especially my horse.
- Humility - Working through some of my most embarrassing moments.
- Tolerance - Dealing with Barbie (my horse) and my mistakes, after all neither of us is perfect.
- Humbleness - When I've had a good day and others have not.
- Respect - For all those who have helped to make 4-H possible.
- Responsibility - For my actions and the care and training of my horse.
- Perseverance - Sticking to my goals and ethics, not letting anything keep up from succeeding.
- Horsemanship - Consistently striving to be a better, safer, and more informed rider.

I've also realized how much the community has put into 4-H. This has helped me to find happiness by volunteering my time and doing community service.

Fair is a big part of 4-H to me. Not only do I get to have fun, but I get the opportunity to demonstrate how all the hard work and time has improved both my horse and me, while being critiqued by judges to improve my horse and myself even more. To me "Fair is where the heart is" suits the 4-H program perfectly because without the hearts of all the participants 4-H would not be what it is today. Thank you 4-H staff, leaders, volunteers, junior leaders, and my parents. Whatever career I choose all of you will have helped mold the horse person I will become.

## What's Up? Let me tell you about my week!

By Gay

It all started on Thursday, October 11 when my computer booted up to "2 bad clusters". That means that the hard drive on the computer is about to roll over and play dead. For two days, I did disk scans and tried fixing the problem. I backed everything up and then backed up some more. By Monday, the Dell person came and installed a new hard drive. After he left, I tried retrieving some of my files only to find that some of the backed up files were somewhere out in cyber space. OSU's computer technician came to the rescue on Tuesday, October 16 and by Wednesday afternoon I was more or less back in business. Which brings us to this point in time.

The newsletter deadline is today and I'm trying to reconstruct what was missing and I need your help. *One of the really big things I am missing is your email address* and I know how much you appreciate all my e-mails. So.....if you would like to continue to receive 4-H e-mails, please email me ( [gay.demmer@orst.edu](mailto:gay.demmer@orst.edu) ) with your name, project areas (horse, dog, fiber arts) and your email address. Thanks for your help!!

**Central Oregon Ranch Supply, Inc.**  
**548-5195**  
P.O. Box 103 • 1726 S. Hwy. 97, Redmond, OR 97756

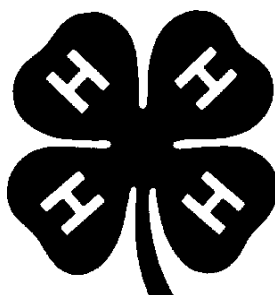
- Feed
- Vaccine
- Animal Health
- Show Supplies
- Salt & Protein Blocks
- Hay & Straw
- Pet Food & Supplies



**YOUR ANIMAL SUPPLY EXPERTS!**  
**Albers Full Line Feeds**

Pacific Northwest Milling

We learn the rope of life by untying its knots. -  
*Jean Toomer*



**Diamond B**  
*Tack and Feed*

We Gladly are Among the Many  
4-H Sponsors of 4-H Awards

*Specialized Friendly Service*

PRICES DESIGNED TO  
BE 4-H AFFORDABLE

7077 S. HWY 97, Redmond Oregon

923-7622



# CATCH PEN



## State Fair Livestock Judging

### Teams Successful

The intermediate team of Michelle Kennedy, Kelley Long, Jessica Puccetti, Rachel Foss & Sammie Clark placed 6<sup>th</sup> out of 21 teams. Eighty-nine intermediates participated in the contest and Michelle Kennedy (17<sup>th</sup>) & Kelley Long (20<sup>th</sup>) both had overall top 25 finishes. The senior team of Brandi Kitcher, Kayla Haavisto, Nick Dragt and Jack Daniel placed 5<sup>th</sup> out of 19 teams. There were 63 senior youth who participated; including an 8<sup>th</sup> place finish by Kayla Haavisto. This year's teams were coached by Lance Hill. Many thanks to Lance, the Foss family, Bob & Shari Marler, and others who helped prepare the team for this state competition. Congratulations to all! Ccb



## Does Your Steer Lead? It Better!

Since many of you are beginning to select and purchase next year's market beef project it's important and timely to remind everyone of the new guidelines set up by the livestock committee in 2001. **Weigh-In for all market steers is February 2, 2001 - 9 am - 11 am.**

If you do not weigh a back up steer, and your steer is too light/heavy or if your steer is unmanageable, you may elect to replace it within 10 days. Proof of purchase and a new "official weight" must be presented at the extension office before 5 pm on the 10<sup>th</sup> day. A new ear tag will be issued. This new animal will not participate in the rate of gain contest, but no other restrictions will exist. However, the 4-Her must weigh this animal at the "60-day weigh-in" on Saturday, April 6, 2001 at 8 am. There is a \$25 fee for weighing in on this day.

If a member's animal is determined unmanageable by the committee of folks present including the beef superintendent, the extension staff and FFA instructor, the animal must be re-weighed at the April 6 weigh-in day. Again, there will be a \$25 fee for this service. Animals declared unmanageable who do not participate in this weigh-in will NOT be allowed to exhibit at the fair. Parents/Guardians of 4-Hers who have steers who prove to still be unmanageable will be asked to sign a statement accepting complete responsibility and liability for the animal to be unloaded at fair. Not signing the document is agreement that this animal will not be exhibited at fair.

If the statement is signed and the animal is unloaded at fair and is determined not manageable by the committee in charge, it will go home *immediately* and not be allowed to exhibit. The committee will consist of the supervising organization staff member (4H/FFA), the fair director in charge of the area, a Kiwanian and the 4-H Beef Superintendent or the members present or quickly available. Ccb



## Deschutes County's First High Desert 4-H & Open Dog Show

Deschutes County Fairgrounds  
High Desert Activity Center

**Saturday, November 10, 2001**

Registration 8:30 am ~ Show starts at 9:30 am

\*\*\*\*Trophies to first, ribbons through 8th\*\*\*\*

- |                                |                      |
|--------------------------------|----------------------|
| 1. 4-H Showmanship - SR        | 7. Novice            |
| 2. 4-H Showmanship - INT       | 8. Grad Novice       |
| 3. 4-H Showmanship - JR        | 9. Utility           |
| 4. Non 4-Her YOUTH showmanship | 10. Open             |
| 5. 18 and over showmanship     | 11. Trick for Treats |
| 6. Sub Novice                  |                      |

Questions, Contact Candi, 541/548-6088 x 15

One entry per class, except where classes are run individually, ie: tricks, agility

Animals are expected to be in good health and must present current vaccination records upon arrival. Any animal suspected of having a contagious disease or illness will be required to submit to a health inspection by a veterinarian at their own expense.

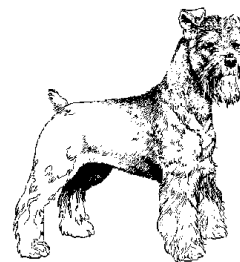
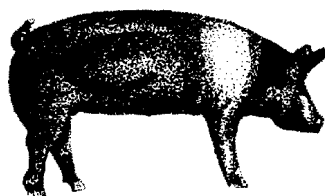
\$5 per class or \$20 for the day per dog, if entered and paid by November 2<sup>nd</sup>, 2001. After 11/2 and at the event, entries will be \$7 per class or \$25 for the day.

Classes you wish to enter: \_\_\_\_\_

Send Entry and fees to:  
Deschutes County 4-H Leaders Assoc., Dog Show, 1421 S. Hwy 97, Redmond, OR 97756

## Juniper Jackpot Meeting Scheduled

Anyone interested in helping out with the Juniper Jackpot, please try and attend a meeting discussing last year's event and the future of the Jackpot. If this event is to continue, we need a beef manager for the show. The meeting is at the Extension Office at 6:30 pm on Monday, November 26<sup>th</sup>, 2001. Ccb



## Small Animal 4-H Leaders' Regional Training

Attention all Small Animal Leaders ~ this is for you! On Saturday, November 10<sup>th</sup> from 8:45 to 3 p.m. at the Linn Co Extension Office, 4<sup>th</sup> & Lyons in Albany, workshops on sharing ideas, cats, dog showmanship and obedience, poultry, herpetology, pigeons and doves, rabbits, and various round table discussion will be held. Don't miss this wonderful opportunity!

## Calling all Dog Members, Leaders, and Parents to a Round Table

Please mark Tuesday, November 13, 2001 on your calendars. Youth and adults from the Dog Program are invited to a meeting to discuss generating contacts within the dog program, gathering ideas for fun and productive club meetings, sharing volunteer, community service, and fund raising ideas with each other. Instituting a Dog Bowl within the tri-county will also be tossed about to gauge participation and volunteer interest. Djw

# More on Lambs Tails

At the livestock meeting the other night, we agreed to continue on our path of requiring tails on our lambs; leaving the rule as it is and adding an appeals process. I would like everyone to take a look at the memorandum that our office received this week regarding this issue. ccb



## Quiz Bowl Day Planned

You've been asking for it, so we've planned a day of quiz bowl for members in the tri-county area. Bowl games are planned for livestock, horse, dog, small animal and citizenship. We need questions, questions, questions! Have your clubs type up some questions making sure you can find the answer in our materials. Get those questions and answers to me as soon as possible and we'll coordinate question packets for the day. Start preparing your teams, I've included questions to get you going in this month's newsletter. The date is still tentative, either March 2<sup>nd</sup> or March 9<sup>th</sup> at the Deschutes County Fairgrounds.

Questions should come to Candi either via Email, disk or as a last resort typed or hand written. Each questions should include the answer, the 4-H manual the answer and question were derived from and the page number. Teams should consist of beginner and advanced members. Beginner members are defined as two years or less in their project area. Teams can be of 4 or 5 members and can be combined clubs or even out of county folks.

We'll also need volunteers to be judges, question readers and score keepers for the day. Give Candi a call if you can help out.

This will **not** be part of the County Horse Bowl Contest but rather a fun day of learning, sharing, and fun recognition. Members or teams may participate in multiple subject areas if they choose. It should be a fun and educational event! Ccb



One reason your dog can help you so much when you're downcast is that he doesn't demand to know why.

COOPERATIVE EXTENSION SERVICE  
4-H Youth Development and Education - State Office



OREGON STATE UNIVERSITY  
105 Ballard Extension Hall, Corvallis, OR 97331-3608  
Voice: 541-737-1314 • Fax: 541-737-1332  
Email: Bradford.Jeffreys@orst.edu

October 12, 2001

TO: County Extension Faculty with 4-H Livestock Responsibility  
County Extension Faculty with Adult Livestock Responsibility

FROM: J. Bradford Jeffreys Extension Specialist, 4-H Animal Sciences  
Jim Thompson Extension Sheep Specialist

RE: **Market Lamb Tail Docking Recommendation for 2001-2002 and beyond**

Those in the Market Lamb business are familiar with the many issues that have surrounded the management practice of extreme tail docking in recent years. The practice of tail docking is a standard management practice. This husbandry skill helps prevent fecal and urinary contamination of the rear legs which can in turn, contaminate the carcass when slaughtered. Soiled or contaminated wool around the rear leg area attracts fly-strike and encourages flies to lay eggs; the result being maggots that then feed on the wool, skin and flesh of the animal.

The practice of extreme tail docking through the complete or almost complete removal of the tail increases the incidence of rectal prolapses. Genetics, diet, transportation, stress and conditions causing the lamb to cough such as dust or respiratory disease can also influence the likelihood of prolapses. The practice of extreme tail docking does not enhance the breeding quality or overall health or welfare of the animal. The incidence of extreme tail docking and its possible relationship to prolapses is also something we need *not* expose to the general public when they come to visit and observe our 4-H Youth Shows across Oregon. Therefore, our recommendation is as follows:

**To qualify for exhibition in Oregon 4-H Livestock Shows after January 1, 2002 Market Lambs must be docked in such a way that the tail (dock) can be lifted.**

Oregon counties that do not adopt this recommendation and have their lambs go to a commercial reseller or bought back through a commercial lamb buyer/feeder may potentially experience price docks or possible refusal to purchase the "buyback" lambs that go through your 4-H sale/auction. **If you contract with a lamb buyer at your auction, we strongly suggest that you (the County Agent or a designate from your Auction committee) contact them as to what you are communicating to local 4-H Farm Flock/Purebred Producers who provide project lambs in your county or surrounding area.**

cc: John McCaulley, Oregon Fairs Association  
Oregon Purebred Sheep Breeders Association  
Lee Babcock  
Cleve Dumdi  
Bill Braunworth  
Jim Rutledge

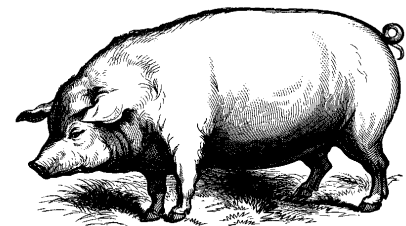
## Advisory Meetings Set

Don't forget it's important for ALL clubs to be represented at advisory committee meetings and all parents, members, leaders and assistant leaders are invited. ccb

**Livestock** at the Deschutes County Fairgrounds, North Sister at 7 pm

2002

- ❖ Monday, February 18
- ❖ Monday, April 15
- ❖ Monday, June 17
- ❖ Monday, September 16



**Small Animal** at 6:30 pm

2001

- ❖ Wednesday, November 7 at OSU Central Oregon in Bend

2002

- ❖ Wednesday, January 2 at Extension office
- ❖ Wednesday, March 6 at OSU Central Oregon in Bend
- ❖ Wednesday, May 1 at Extension office
- ❖ Wednesday, July 3 at OSU Central Oregon in Bend
- ❖ Thursday, September 5 at Extension office

# HORSE'N AROUND



## 4-H HORSE CALENDAR

### 2001

- Nov 3 SAT Horse Bowl #3, DCF, Event Center, Jrs 8:30 am, INT/SR 11 am
- Nov 3 SAT Horse Judging Contest, DCF, Event Center, 2 pm
- Nov 13 TUE Horse Project Meeting, DCF, North Sister 6:30 pm
- Nov 15 THU Horse Bowl #4a, OSU CO, Bend **Jrs Only**, 6 pm
- Nov 17 & 18 SAT/SUN 4-H Judges Clinic, Driving & Jumping, Linn Co Fairgrounds
- Nov 19 MON Horse Bowl #4b, OSU CO, Bend **INT/SR Only**, 6:30 pm

### 2002

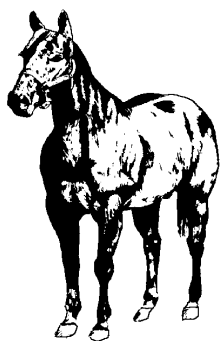
- Jan 8 TUE Horse Project Meeting, DCF, North Sister 6:30 PM
- Feb 23 SAT Horse Idea Fair, RHS, 9 am
- Mar 12 TUE Horse Project Meeting, **OSU Central Oregon, Bend** 6:30 PM
- Apr 13 SAT 4-H Community Service Day
- Apr 27 & 28 SAT/SUN Spring Horse Classic, Ontario
- May 14 TUE Horse Project Meeting, DCF, North Sister 6:30 PM
- May 18 SAT FFA Horse Show, DC Fairgrounds
- May 25 SAT DC Horse Leaders Horse Show, DC Fairgrounds, Juniper Arena
- May 28 TUE General Fair Meeting, DCF, North Sister, 7 pm
- Jun 15 SAT Deschutes Diamond Riders, Poker Ride, Skull Hollow
- Jun 22 SAT Winn'n Riders 4-H Horse Show, Diamond B
- Jul 6 SAT DC Horse Leaders RanchHorse Show, DC Fairgrounds, Juniper Arena
- Jul 9 TUE Horse Project Meeting, DCF, North Sister 6:30 PM
- Jul 26-28 FRI-SUN DC Horse Fair
- Jul 29 MON DC Horse Fair Awards, 6 pm, *bring a salad or dessert*
- Aug 12-20 OR State 4-H Horse Fair
- Sep 10 TUE Horse Project Meeting, DCF, North Sister 6:30 PM
- Sep 13-15 Fri-Sun 4-H Trail Ride
- Nov 12 TUE Horse Project Meeting, DCF, North Sister, 6:30 PM
- Revised: October 17, 2001*

## Horse Bowl Schedule

- ❖ Saturday, November 3<sup>rd</sup> at the Deschutes County Fairgrounds Event Center, 8:30 am for juniors and 11 am for intermediates and seniors. Study the contest guide and ground training manual.
- ❖ Thursday, November 15<sup>th</sup> at the OSU Central Oregon building on Empire and Hwy 97 in Bend. Juniors only at 6 pm. Study driving, dressage and records.
- ❖ Monday, November 19<sup>th</sup> at the OSU Central Oregon building on Empire and Hwy 97 in Bend. Intermediates and Seniors only at 6:30 pm. Study driving, dressage and records.

## Horse Judging

Bring your horse selection and rider recognition talents to this year's horse judging contest. This year's event will be at the Deschutes County Fairgrounds in the Expo Center **November 3rd at 2 pm**. Members who choose to participate will place 4 horses or riders best to worst in conformation and equitation or showmanship. Additionally, members will identify tack items, feed and grain and judge hay. Don't forget those enjoyable oral reasons. Intermediate and Senior members may qualify to attend the Spring Horse Classic in Ontario in April and judge as a county team against other teams from around the state. Classes are tentatively: Mules, Tennessee Walkers, Quarter Horses, Miniatures, Western Equitation & Showmanship. Ccb



## Three Step Certificate of Merit

### Awarded



Congratulations to Rachael Rees, a junior 4-H Horse member from Bend, who earned this prestigious award at county fair this year. It's been a few years since we had the honor of recognizing this feat. If you don't know what the 3 step is, check it out in your contest guide. It's the completion of 3 Dad Potter steps with no errors. Great job and congratulations! Ccb

## Horse Presentations & Public Speaking

Just a reminder, we do have the opportunity to send a 9<sup>th</sup> grade & a senior horse presenter and public speaker to Spring Horse Classic in Ontario. We do not currently hold a contest specific to these, but if someone is interested we will put you "through the paces" so those qualified may attend. Ccb

## Planning to qualify for state fair?

### Changes effective immediately.

The state horse development committee has made a significant change in the way horse members may be selected to participate in state fair. There is no longer a quota system. Any intermediate or senior who receives a total of 170 points in showmanship and either english equitation or western equitation, may participate in their qualifying classes at state fair. This means we could have no one qualify or 50 qualify. It also means our youth have only one person to compete with to attend state fair, themselves. This doesn't mean you must have a blue to qualify, it means if you get an 83 in showmanship, you need at least an 87 in an equitation class to participate at the state level. Remember, 85 and above is a blue, 70-84 is a red. Ccb

## Quiz Bowl Day Planned

You've been asking for it, so we've planned a day of quiz bowl for members in the tri-county area. Bowl games are planned for livestock, horse, dog, small animal and citizenship. We need questions, questions, questions! Have your clubs type up some questions making sure you can find the answer in our materials. Get those questions and answers to me as soon as possible and we'll coordinate question packets for the day. Start preparing your teams, I've included questions to get you going in this month's newsletter. The date is still tentative, either March 2<sup>nd</sup> or March 9<sup>th</sup> at the Deschutes County Fairgrounds.

Questions should come to Candi either via Email, disk or as a last resort typed or hand written. Each questions should include the answer, the 4-H manual the answer and question were derived from and the page number.

Teams should consist of beginner and advanced members. Beginner members are defined as two years or less in their project area. Teams can be of 4 or 5 members and can be combined clubs or even out of county folks.

We'll also need volunteers to be judges, question readers and score keepers for the day. Give Candi a call if you can help out.

This wil **not** be part of the County Horse Bowl Contest but rather a fun day of learning, sharing, and fun recognition. Members or teams may participate in multiple subject areas if they choose. It should be a fun and educational event! Ccb

## The Great Tack & Equipment Exchange

As in past years, the High Desert Horseman will be sponsoring a tack and equipment sale at the February 23, Idea Fair. The club makes a 10% commission from all items sold and would like to take on your consignments. Additionally, this is an outstanding opportunity to find good used clothing, tack and equipment items. The High Desert Horseman will be available to receive consignments on February 23rd an hour before Idea Fair begins. Please be sure to **price and mark all items before bringing on the morning of idea fair**. Also, don't forget, the Hog Wash swine club will also have lunch and morning concessions at Idea Fair. For more information, contact Robin Stokes at 548-6531 or [StokesDanE@aol.com](mailto:StokesDanE@aol.com) - Cathie Coe-Moore at 389-2690 or [ccm@bendnet.com](mailto:ccm@bendnet.com) - Debbie Strassman at 383-8194 or [strass@coinet.com](mailto:strass@coinet.com) Ccb





# NEEDLES, NOODLES & STUFF

The following is an activity found in "Kitchen Science For Kids" a curriculum put together by Cornell Cooperative Extension and available through our office.

## A Smelly Challenge

1. Select a food (seasonings, herbs, flavorings, foods) to sample.
2. Place a sample of the food in an empty film container. Put the lid on the container.
3. Repeat steps 1 and 2 to make each "smell bottle." If you use several foods, it may be helpful to label each with a code number and record the codes on a piece of paper.

## Triangle Test

Prepare two identical "smell bottles" and one that is different. Put participant's noses to the test. Can they identify the odd sample? Can they name the paired and odd samples? Challenge several more people. Are any odors easier to match or identify than others?

## Matching Pairs

Prepare an even number of samples. Put people's noses to the test. Can they sort the samples into matching pairs? Can they name the paired samples? Challenge several more people. Are the odors easier to match or identify than others?

## Exploring Together

- Can you smell anything?
- Can you do anything to make the odor stronger?
- What happens if you inhale rapidly several times?
- What happens if you block one nostril?
- Is this a familiar odor?
- What words can you use to describe the odor?
- Can you identify the odor?
- Are some odors more easily identified than others? Why?
- How does the odor get from the bottle to your nose?
- Do you see anything move to your nose?
- What would happen if you mixed samplers (odors)?
- How easy was it to identify foods by smell alone?
- Describe a food you enjoy because of the way it smells.
- Describe a food you like because of the way it smells.

## Notes about Supplies and Procedures

Choose foods with distinctive aromas. A combination that works well for young children is cocoa, honey, cinnamon, and peanut butter. Older children can be challenged to distinguish more subtle differences for less familiar odors. Consider a variety of seasonings (cinnamon, curry, onion powder, garlic powder, black pepper, and chili powder) flavorings (vanilla, almond extract, lemon extract) and herbs (mint leaves, oregano leaves, basil leaves).

Photo stores that recycle empty film containers are a source of quantities of these containers free or children could save them from home. Film containers work well for this activity because they are small and have tight-fitting lids, but other plastic containers such as those for margarine, cream cheese, cottage cheese, or yogurt also work.

## KNITTING & CROCHETING MEMBERS

Check out the website [www.craftyarnCouncil.com](http://www.craftyarnCouncil.com) for up to date quick and easy patterns and information about knitting and crocheting.

### ROSETTE PILLOW

Materials needed:

- round pillow form
- decorator fabric and matching lining
- matching thread
- heavy rubber band
- decorative cord
- trim (optional)



Directions:

1. Measure pillow form. Make a circle pattern 2 1/2 times the pillow form diameter.
2. Using the pattern, cut our decorator and lining fabric.
3. With right sides together, stitch the decorator fabric and lining together with a 1/2" seam allowance. Leave a 3" opening for turning. You can decorate the edge with trim, fringe, or cording if you wish.
4. Turn right side out, press, and stitch opening closed.
5. Center the pillow form on the fabric circle. Wrap fabric over the form and gather into a rosette. Secure with a heavy rubber band. Hide the rubber band by tying decorative cording or a cord covered by the pillow fabric around it.

This is a project out of the SEW QUICK! Booklet A 4-H Leader's guide. Quick and Easy Christmas gift!

## Oregon Make It Yourself With Wool

Entry forms for Oregon's 2001 Make It Yourself with Wool contest are now available from our extension office.

Oregon's Make It Yourself With Wool contest began in 1947. The very first National Make it Yourself with Wool contest was held January 15, 1948, with Oregon's state contest winners participating. This 54 year history makes Oregon's contest a unique promotional event.

Contestants are required to construct and model their handmade, wool garments. "Fabrics must contain at least 60% wool." Contest is divided into age categories: Preteen (12 & under), Junior (13-16), Senior (17-24) and Adult. Entries may also be submitted in two other divisions: *Made for Others* or *Wearable Accessories*.

Finalists in the Junior and Senior division win a trip to the National Make It Yourself with Wool contest to be held January 24-26, 2002 in San Antonio, Texas.

Sponsors for the 2001 Oregon competition are the Oregon Sheep Commission, Oregon Sheep Growers Association and Oregon Women for Ag. Additional support for the program is provided by private donations.

The Make It Yourself with Wool contest is designed to showcase the beauty and versatility of wool fabrics and yarns, as well as to encourage personal creativity in the design and construction of fashionable wool garments.

To make a donation or obtain more information, please contact Oregon Director Maureen Krebs, 69956 Hwy. 74-Cecil, Ione, OR 97843, phone: (541) 422-7548.

## McCalls

The new fall patterns for 95 cents from McCalls has arrived. I will have the posters at the Home Ec leaders meeting on October 23<sup>rd</sup>. If you would like to have members in your club order the patterns I need to know by December 1<sup>st</sup>. They have some nice skirt, pants, jumpers and fleece jacket patterns.

# DID YOU KNOW?



## Classified Ads

Buy, sell, trade, give away, want — list it here!  
Ads are \$3 each. To place an ad call Gay - 548-6088 x11  
or e-mail: [gay.demmer@orst.edu](mailto:gay.demmer@orst.edu)

**1994 Reg. APHA Breeding Stock Bay Mare.** 15 H, 1300 lbs. Cal Bar, Bally Hobo, Cajun Indio bred. Very well cared for. Fully vaccinated and wormed. Loads, trailers, clips, bathes, stands quietly for farrier. Very willing, gentle and loving mare. Would make a wonderful project horse. MOVING-MUST SELL. Price is negotiable but only loving homes will be considered. (541)382-5494 or (541)350-0261 or email: [Bobolaflem@aol.com](mailto:Bobolaflem@aol.com)

**Rabbits for sale:** Holland Lops and Netherland Dwarfs; show quality. Call Karen at 389-9197.

**Fainting Goats:** Looking for a good home! One male stud with great coloring, 1-1/2 yrs old; one female (papered) mostly black – excellent mother. \$75 for pair OBO. Will sell separately. Have two of their kids on site. Melisa or Todd 330-5706

**POA Filly:** 6 mos old, black bay. Great 4-H project – halter broke, leads, picks up feet, and ready to be worked with. Can be registered. \$500. Rhonda 504-0622.

**Have you moved or are you a member of the community who would like to receive the Over the Clover? If so, we need to know.**

Don't miss a single issue of *Over the Clover*. Fill out the form below and return it to **OSU Extension Service, 1421 S Hwy 97, Redmond OR 97756** now!

### Address Form

Name \_\_\_\_\_

Phone \_\_\_\_\_

Old Address \_\_\_\_\_

New Address \_\_\_\_\_

E-Mail Address \_\_\_\_\_

*New subscribers, please enclose \$5.*

*Thank you!*

## Enrollment/Re-Enrollment Hints Continued

The newsletter is not optional. All members must subscribe to it. We try very hard to get all pertinent 4-H information into the Over the Clover. This is the member's tool for keeping informed on what is happening in the 4-H and what the upcoming events are.

It is very helpful if you e-mail me ([gay.demmer@orst.edu](mailto:gay.demmer@orst.edu)) a materials list of what you need before bringing in your forms in. That way I can pull what you need and have it ready when you arrive. It also gives me a chance to order anything that we might be out of or need more of for your club.

As always, you are a great group to work with and I know the paperwork is a hassle but it is a necessity. Thanks for your cooperation. Give me a call if you have any questions.

## DESCHUTES COUNTY FAIR RESULTS CONTINUED

Name	City	Ribbons
Class 761115080) Lop (French), Senior Buck (Rabbits)		
MARGO, ERICA	BEND	B
SMITH, MARIAH J	BEND	B
SMITH, MARIAH J	BEND	B

Class 761116020) New Zealand, Senior Doe (Rabbit)		
BRADLEY, AMBER H	CROOKED RIVER	B

Class 761116060) New Zealand, Junior Buck (Rabbit)		
BRANDLEY, AMBER H	CROOKED RIVER	B
BURK, HAILEY A	REDMOND	B
BURK, KYLIE A	REDMOND	B

MORE IN THE NEXT ISSUE OF THE CLOVER!

## State 4-H Website

For everything you have always wanted to know about 4-H and were afraid to ask, check out <http://oregon.4h.orst.edu>

If you would like to continue to receive 4-H e-mails, please e-mail me [gay.demmer@orst.edu](mailto:gay.demmer@orst.edu) with your name, project areas (horse, dog, fiber arts) and your email address. Thanks for your help!!

Thanks!  
**What's Up?**

### Deschutes County 4-H Extension Staff

1421 S. Hwy 97, Redmond, OR 97756 548-6088 Fax 548-8919

Homepage - <http://extension.orst.edu/deschutes/4-H.htm>

Dave White----- 4-H/Youth Development Agent

548-6088 ext. 14 email address - [David.white@orst.edu](mailto:David.white@orst.edu)

Candi Bothum -----Program Coordinator

548-6088 ext.15 email address - [Candi.bothum@orst.edu](mailto:Candi.bothum@orst.edu)

Gay Demmer-----Secretary

548-6088 ext. 11 email address - [Gay.demmer@orst.edu](mailto:Gay.demmer@orst.edu)

Paty Jager-----Program Assistant

548-6088 Ext. 13 email address - [paty.jager@orst.edu](mailto:paty.jager@orst.edu)

Senator Bev Clarno, State Capitol Building S-210, Salem OR 97310

Representative Tim Knopp, State Capitol Building H-288, Salem OR 97310

Representative Ben Westlund, State Capitol Building H-281, Salem, OR 97310

Salutations: Dear Senator (Last Name), Dear Representative (Last Name)

Extension Service, Oregon State University, Corvallis, Lyla Houglaam, Director.

This publication was produced and distributed in furtherance of the Acts of Congress of May 8 and June 30, 1914. Extension work is a cooperative program of Oregon State University, the U.S. Department of Agriculture, and Oregon Counties.

Oregon State University Extension Service offers educational programs, activities, and materials without regard to race, color, religion, sex, sexual orientation, national origin, age, marital status, disability, and disabled veteran or Vietnam era veteran status as required by Title VI of the Civil Rights Act of 1964, Title IX of the Education Amendments of 1972 and Section 504 of the Rehabilitation Act of 1973. Oregon State University Extension Service is an Equal Opportunity Employer.

Those wishing to attend this event who have special needs resulting from a physical disability should contact their local Extension office at least three days in advance of the event.

