



4-H Youth Development Over the Clover

VOLUME 16

ISSUE 8

SEPTEMBER, 2008

A monthly publication for the 4-H members, leaders & families of Deschutes County

Call It What You Will

Tragic, adverse, unbelievable, call it what you will, daily life throws things at us that we don't expect. I suspect that a number of youth and families were feeling that way at some point during the hours and days of fair. What youth and adults expected was not delivered to their respective satisfaction.

I feel compelled to let the parents, members, and leaders within the Deschutes County 4-H program know about the promises made by 4-H. Four-H promises to offer youth the opportunities necessary to gain mastery over subjects within project areas, feel that they belong to an organization with safe and fun social learning environments, practical experiences to develop confidence as independent thinkers and citizens, and chances to understand what it truly means to be generous.

I am concerned that members, parents, and leaders were led to believe, through various channels, that 4-H promised members in the Deschutes County program monetary rewards or financial gain associated with the raising or showing of 4-H projects. Those promises have never been made nor will they ever be made.

INSIDE THIS ISSUE:

| | |
|-----------------------------------|--------------|
| <i>Call it What What You Will</i> | <i>1</i> |
| <i>Calendar of Events</i> | <i>2</i> |
| <i>What's Up</i> | <i>3-12</i> |
| <i>Horse Fair Results</i> | <i>13-19</i> |
| <i>Character Counts</i> | <i>20</i> |
| <i>High Desert Ropes</i> | <i>20</i> |
| <i>New Leader Training</i> | <i>21</i> |
| <i>Teen Staff</i> | <i>22-23</i> |
| <i>BIT</i> | <i>24</i> |
| <i>Noodles, Needles, &</i> | <i>25-26</i> |
| <i>Lee Side</i> | <i>27</i> |
| <i>Small Animal</i> | <i>28</i> |
| <i>Catch Pen</i> | <i>29-30</i> |
| <i>Horse'n Around</i> | <i>31-32</i> |
| <i>Dog House</i> | <i>33</i> |

Life is filled with joyous moments and certain risks. How we collectively choose to help our community's young people understand and cope with life's little mysteries is what 4-H is all about. If you, as a member, parent, or leader are having a difficult time reconciling certain events at fair or throughout the coming 4-H year; Candi, Tina, and I are at your service to help you understand the mission and vision of 4-H. Our doors are always open. Our phones are always on. Our emails rarely divert your messages to junk mail. The 4-H year comes to an end this month. A brand new one starts in October. Let's make the development of a 4-H member's confidence, competence, caring, connection, character, and contribution a priority for 2008-2009.

Dave



DESCHUTES COUNTY 4-H CALENDAR

(Can't find it here? Be sure to check the individual project calendars.)

2008

- Sep**
- 3 Dog Committee Meeting, 6:30 pm
 - 6 Teen Staff Picnic, McKay Park
 - 9 Mentor Training, 6:30 pm
 - 11 Horse Proj Com Mtg, 6:30 pm Extension Office
 - 18 New Leader Training, 6:30 pm
 - 15 Executive Committee Mtg, Youth Officers, 6:00 pm; Adult Officers 7 pm
 - 23 Ethics Workshop; 6:30 pm—NSister Bldng
 - 23 Home Ec./Ex. Arts Comm. Mtg; 6:00
 - 25 Livestock Com Mtg, 6:30 pm, NS
 - 27 Cookie Camp, 9 am-6 pm , N. Sister
 - 29 Auction Com Mtg, 6:30 pm
- Oct**
- 1 Enrollment for 2008/2009 begins
 - 3 Record and Scrap Books due for judging by 3 pm
 - 11 4-H Leaders' Forum
 - 14 Project Advisory Meeting, 6:00 pm North Sister Building
 - 16 Record Book Training 6-8 pm
 - 25-27 Serving @ Central Oregon Symphony Bend High
- Nov**
- 31 Teen Staff applications due!
 - 1 Leaders & Members Recognition Night; 6:30 pm-NS
 - 3 Executive Committee Mtg, Youth Officers, 6:00 pm; Adult Officers 7 pm
 - 4 Teen Staff Meeting, 6:00 pm
 - 15 Speakeasy Workshop 9 am-2 pm, S. Sister Bldg.
- Jan**
- 5 Executive Committee Mtg, Youth Officers, 6:00 pm; Adult Officers 7 pm
 - 8 Teen Staff Meeting, 6:00 pm
 - 13 Project Advisory Meeting, 6:00 pm North Sister Building
 - 16-19 High Desert Leadership Retreat
 - 22 New Leader Training , 6:30 pm
- Feb**
- 5 Mentor Leader Training, 6:30 pm
 - 14 Cookie Camp, 9 am-6 pm , N. Sister
 - 16 State Resumes and Scholarship Applications due to the Ext. office by 5:00
 - 21-23 Serving @ Central Oregon Symphony Bend High
- Mar**
- 2 Executive Committee Mtg, Youth Officers, 6:00 pm; Adult Officers 7 pm
 - 5-7 Know Your Government, Salem OR
 - 9 Teen Staff Meeting
 - 10 Project Advisory Meeting, 6:00 pm North Sister Building
 - 17 New Leader Training, 6:30 pm
- Apr**
- 9 New Leader Training, 6:30 pm
 - 11 Cookie Camp, 9 am-6 pm , N. Sister
- May**
- 1 Home Ec. Skills Contest, Redmond High
 - 2 Home Ec. Skills Contest, La Pine MS
 - 4 Executive Committee Mtg, Youth Officers, 6:00 pm; Adult Officers 7 pm
 - 5 Teen Staff Meeting, 6:00 pm

- 12 Project Advisory Meeting, 6:00 pm North Sister Building
- June** 5 Larkspur Festival; Larkspur Park, Bend
- 6 Redmond Chamber Coffee Clatter
- 25-27 OSU Summer Conference, OSU Campus

*Changed Date.

All meetings are at the Extension office unless otherwise noted. Project committee meetings are open to all leaders, members, and parents. This is where decisions are made regarding your project area. Your attendance is encouraged and most welcome.

Online Fillable Project Records

Now Available

The 4-H Animal Science Jr and Int/Sr. records (4-H 1001R and 1002R) are now available on the EESC 4-H web page (<http://extension.oregonstate.edu/catalog/4h/>) as fillable Word documents. More project records will be made for online fillable use in the months to come.

Check out the website, several fillable project records already exist!



Access 4-H

A one-stop internet home for information, instruction, and interaction about 4-H is being created at:

<http://4-h.com/access4-H/>

Your feedback and input in making it happen are welcome. Check it out!

New Parents to Receive a Welcome Letter

We are currently drafting a welcome letter for new parents to 4-H. This is a letter that will outline basic expectations as well as welcome them to the organization. We'll also encourage them to be participatory by volunteering whenever possible.

What's Up?

Members' and Leaders' Recognition Dinner Saturday, November 1st, 2008!

Join us November 1st at 6:00 pm in the North Sister Building. It is a way to say thank you to our wonderful volunteers, celebrate the end of a successful year and usher in a new one by electing our new 4-H Jr. officers and our new adult secretary. This night is for *everyone* involved with 4-H! Look for more details about the theme for this event, the table decorating contest and other specifics in next month's newsletter!

Tina

Members' and Leaders' Recognition Dinner Registration

Saturday, November 1st, 2008 ~ 6:00 PM
Deschutes County Fair and Expo Center ~ North Sisters Building

The _____ 4-H Club will be attending the Dinner. Total number of people attending: _____ Number of tables requested: _____

Please return on or before Friday, October 24th, 2008 to: **Members' and Leaders' Recognition Dinner, 3893 SW Airport Way, Redmond, OR 97756.** Or, email reaza.mansur@oregonstate.edu with your RSVP.

Attention all Award and Scholarship Recipients!



What a great honor to receive a 4-H award or scholarship! Please remember that these are provided by some great sponsors, and we need to be sure they are receiving thank you cards for their caring efforts! People like to feel appreciated, and if they feel you actually notice the nice things they do, they're more likely to continue to support the 4-H program.

Here's a couple things to remember about the Thanks You cards you send:

- #1 Send them promptly!
- #2 Be specific about what the gift was, and why you received it.
- #3 Check spelling and grammar! This is critical!! Have your 4-H leader or another adult check your card before you send it!
- #4 Always be gracious and thankful for the thought behind the donation, whether or not the award was exactly what you wanted or needed.

Tina

Let's go to:



Speakeasy

Saturday, November 15th
Deschutes Co. Fair Grounds
9am -2 pm
\$3 per person
Bring a sack lunch!

What will we do?

- ◆ Play speaking games
- ◆ Learn how to do a presentation
- ◆ Make posters
- ◆ Use fun kits
- ◆ Laugh!



Join Cindy Osterlund, Gilliam County 4-H Agent, to learn how to give a better presentation! Speaking in public is one of the most feared, yet most needed skills for success in so many areas of life. Join us for this fun and interactive workshop for Beginning and novice Presenters! Look for the registration form in this newsletter.



**I'll be there!
And I'll bring a friend!**

What's Up?

Memorial and Sportsmanship Awards to be Given at Leaders' Recognition Dinner

Each year 4-H'ers apply for and receive memorial or sportsmanship awards for specific achievements in personal growth, 4-H projects, and 4-H club work. These awards have been presented during fair. This year a change is being made. The following awards will be presented during the annual Members' and Leaders' Recognition Dinner:

Chris and David Lawrence Sportsmanship
Zierlein Family Small Animal Sportsmanship
Bonnie Holtby Memorial
Wendy Sheerer Memorial
Kathy Bishop Memorial
John Ayres Memorial

The 4-H staff is concerned that the meaning behind the establishment of these special awards is being lost as new generations of 4-H'ers enroll in the program. Therefore, a greater emphasis is going to be placed on the significance of the award. Applicants will need to become more familiar with the people, past and present, whose names, accomplishment, and beliefs are forever remembered as a result of the award.

Please refer to this year's premium book for changes in application processes. djw

Record Book Training

Who: Leaders, 4-H Members, Parents
Why: To make your 4-H experience easier!
When: Oct. 16th, from 6-8 pm
Where: OSU Extension Office

Start the year out right! This class will show new members, leaders and parents how to keep accurate permanent records, and it will give seasoned 4-H'ers a good refresher. This workshop meets some of the additional education requirements for new leaders as well. Invest 2 hours this fall and your spring will be much more relaxed because you will know to expect and how to prepare for pre-fair record book checks!

Merv & Sally Fleming Start NEW Educational Scholarship

Merv & Sally have sponsored a very special horse award, recognizing a 4-Her who was committed to work with a young horse. Since giving youth a young untrained horse isn't garnering as much interest as we would like, they are putting their contribution into college/trade school scholarships.

Eligible 4-Hers are graduating seniors, who are exemplary 4-Hers and youth in our community. **These may be 2008 or 2009 graduates.**

Applications are available at the office. The award winner will be announced at the 4-H Leaders & Members Recognition Dinner. The scholarship winner, will receive a **\$1,000** scholarship during their second term in college or trade school.

For details and more information, stop by the office after June 25th to pick up an application, or give Candi a call. Applications will be due Thursday of fair and interviews will be on Friday

2008/2009 Advisory Committee Schedule

ALL AREAS: Horse, Dog, Small Animal, Livestock, Natural Resources, & Home Ec/ Expressive Arts

All meetings are Tuesday and begin at 6 pm with a short educational topic, followed by a general session, followed by project area meetings.

| | |
|-------------------|-------------------|
| Tue, Oct 14, 2008 | Tue, May 12, 2009 |
| Tue, Jan 13, 2009 | Tue, Jul 14, 2009 |
| Tue, Mar 10, 2009 | Tue, Sep 8, 2009 |
| | Tue, Oct 13, 2009 |

All clubs are expected to have a representative at their related meeting. Thanks for your participation. ccb

What's Up?



Record Book, and Scrapbook Competition!

All record books, scrapbooks, and county medal applications are due in the Extension office by **Friday, October 3rd, no later than 3 p.m.** This is a good way to be sure your record books get closed out for the 07-08 4-H year... that means no surprises at pre-fair record book checks next year! Its also a good opportunity to sit down with the judge who can give you some helpful pointers on how to better keep your records.

Make an appointment to be interviewed with the judge when you drop off your record books. Remember, if you do not interview, you are not eligible for champion, reserve champion or any special awards. (Exception is graduated seniors who are away working, in the military or at college).

State Resumes & Scholarship Applications

There are many 4-H scholarships available at the state level to senior applicants. Last year our own Eric Steensen was awarded the \$4500 4-H OSU Scholarship. Cody Smith will be traveling to Atlanta, Georgia to attend this year's 4-H National Congress! Please contact Tina if you have interest in applying for either a scholarship or National Congress! Applications are due to the Extension office by Friday, February 13, 2009, so don't wait!!

Know Your Government Dates Set For 2009

The dates for the 2009 Know Your Government (KYG) program are: Thursday (2 p.m.), March 5 – Saturday (noon), March 7.

The conference site will be the Salem Conference Center and Phoenix Grand Hotel. Mark your calendars!



Apply for a County Medal!

County Medals recognize Intermediate and Senior 4-H members in project or activity areas who have demonstrated advanced accomplishments in a 4-H project, as well as in leadership and citizenship activities.

Applications for county medals can be made in two ways: 1) The 4-H leader nominates members and has him or her fill out a County Medal application form. The leader then writes a recommendation and signs the application form; or

2) A member initiates his or her own nomination by completing a County Medal application form and taking it to his or her leader for signature and leader recommendation. The applications are then turned into the Extension office with the 4-H member's record book Friday, Oct. 3rd by 3:00 pm. The applications will be reviewed by a county medal selection committee. The medals will be awarded at the Leaders' and Members' Banquet, Saturday, November 1st.

Members may apply for only one medal per year. Members may receive same medal once as an intermediate and once as a senior. The following categories are available for county medal Recognition:

- | | |
|-----------------------------|----------------------------|
| Achievement | Garden/Horticulture |
| Aerospace | Goats |
| Agriculture | Health |
| Beef | Horse |
| Bicycle | Leadership |
| Bread | Market Beef |
| Citizenship | Market Goat |
| Clothing/Sewing | Market Sheep |
| Commodity Mktg | Market Swine |
| Conservation | Poultry |
| Consumer Educ. | Public Speaking |
| Dairy | Rabbit |
| Dairy Foods | Safety |
| Electricity | Sheep |
| Entomology | Shooting Sports |
| Fashion Revue | Swine |
| Food & Nutrition | Vet Science |
| Food Preservation | Wildlife/Fisheries |

Applications are available in our office as well as on the "forms" page of our website. Or Contact Reaza: 548-6088

What's Up?

2009 Teen Staff Applications Due October 31st!

If you want to be a part of Teen Staff for the 2008-2009 4-H year, your applications, and a letter of recommendation should be turned in before 5 pm Friday, October 31st!

Don't Forget...

September 30, 2008 closes out the 2007-2008 4-H year. The 2008-2009 year begins October 1, 2008. Certain forms and reports are due. If your club has a checking or savings account you will need to submit a financial report to the Extension office. These financial forms are used by the Deschutes County 4-H Leaders' Association as it reports to the IRS and state. Remember, your 4-H club's assets are actually assets of the Leaders' Association. As such, the Association needs to account for all dollars raised and held in the name of Deschutes County 4-H. Call the office if you have questions.

Also, don't forget to re-enroll yourself and club members ASAP in October. Technically, in order to hold any type of club function, all the necessary forms need to pass across Reaza's desk. Don't jeopardize the medical and liability coverage provided by the state 4-H program and the Deschutes County 4-H program to members and leaders by failing to re-enroll prior to the first club meeting. djw

New Online Publications

The **4-H Fiber Arts Project Guide** (4-H 7601) is now available online at the EESC 4-H publications website (<http://extension.oregonstate.edu/catalog/4h/4-h7601.html>)

Foods with an International Flavor Member Manual (4-H 9316) is now available only online at the EESC 4-H web page (<http://extension.oregonstate.edu/catalog/4h/4-h9316.pdf>)

~ Helen Pease

OTC Labeling Schedule Help Needed

We need for clubs to sign up to Label the *Over the Clover*. We ask clubs to donate their efforts to label the newsletter. Contact Reaza to schedule your exact day. ccb

| Month of Issue | Dates to Label | Club Responsible |
|----------------|----------------|------------------|
| Sep '08 | 8/28 or 8/29 | Royal Ranchers |
| Oct '08 | 10/1 or 10/2 | |
| Nov '08 | 11/3 | |
| Jan '09 | 1/6 | |
| Feb '09 | 2/3 | |
| Mar '09 | 3/3 | |
| Apr '09 | 3/31 | |
| May '09 | 5/4 | |
| Jun '09 | 6/2 | |
| Jul '09 | 7/6 | |



Cookie Camp Dates

Reserve the following Saturdays for Cookie Camp! This is a great pre-fair requirement, and fun too! Cookie Camp will all be in the North Sister Building from 9 am to 6 pm on Saturday:

September 27th & February 14th

Serving at COSA

(Central Oregon Symphony)

Here are the dates for the Symphony . This is a great activity for your whole club. Call now to reserve your spot to serve at the symphony. The only requirements are black pants/skirt, a white shirt, and a smile

Sat, Oct. 25th 7:00 pm
Sun, Oct. 26th 1:30 pm
Mon, Oct. 27th 7:00 pm

Sat, Feb. 21st 7:00 pm
Sun, Feb. 22nd 1:30 pm
Mon, Feb. 23rd 7:00 pm

For more information, or to make reservations, contact Tina: 548-6088, ext. 7952 or Tina.hohman@oregonstate.edu

What's Up?

The Over the Clover Café Tops Last Year's Performance

The Deschutes County 4-H program operates on a slim budget. Funds used to drive the program come from three major sources. One is the annual Cook & Colleen Campout for Kids. Another is corporate and individual donations. The final source is the operation of the Over the Clover Cafe during fair.

During this short week a major portion of the 4-H budget is developed. It is managed by two volunteers, Gary and Karen Moss and a co-manager Deb White. They bring years of experience to the Café and have provided a menu of unique signature items that can only be found at the Café.

If you smelled cinnamon this year, then you smelled the ultimate in blue ribbon gastronomic delicacies. If your sweet tooth gave way to a heartier meal, then you tried the breakfast muffin or the Oregon Trail Burger. Gary added something new last year to the menu: the Carolina Pulled Pork Sandwich. It's was an east coast meets west coast thing.

Your fair dollar went much further at the Over the Clover Café since the prices are designed with the 4-H family in mind. And, you can feel good about buying a meal from the Café. It is staffed by 4-H members, volunteer leaders, and parents. All the proceeds, minus costs, go directly to the 4-H program. The funds are used to purchase curriculum, provide scholarships, and support program development.

If you or your club worked in the Café this year, you did a tremendous job. I hope more clubs will choose to fill shifts for 2009. djw

Awards & Scholarship Available

Volunteers Needed for State Executive Council

The state is looking for volunteers to serve on the Leader's Association Executive Council. There are positions for both adults and teens. The state association is active in planning and sponsoring state and regional educational programs. Applications are available at the extension office.

Check out the premium book, you may be eligible for the small animal sportsmanship award.

Your club may be eligible for the David & Chris Lawrence Sportsmanship Award.

Look for other special award opportunities in the 4-H Premium Book.

Leaders & Members Recognition Night DATE CHANGED

Recognition night will now be held on Saturday, November 1, 2008 NOT in December. We're hoping for a large turnout! Lots of fun and dinner too—you don't want to miss this event. ccb

AND, SENIORS, don't forget to sign up for the Merv & Sally Fleming Scholarship to be awarded at the Leaders' & Members' recognition night. This could be awarded to a senior who graduated in 2008 or who will graduate in 2009! Forms available in the office. ccb



What's Up?

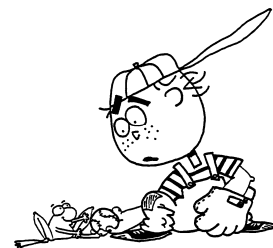
Let's go to:



Speakeasy

Saturday, November 15th
Deschutes County Fairgrounds
South Sister Bldg—Tumalo/Sparks Rm
9am -2 pm
\$3 per person
Bring a sack lunch!

Join other beginning and novice 4-H presenters for this fun and interactive workshop! Cindy Osterlund, Gilliam County 4-H Agent, will teach us how to give a better presentation! Public speaking is one of the most feared, yet necessary skills for success in so many areas of life. While it may strike fear in the hearts of many of us, the more often we speak in front of a crowd, the easier it becomes.



What will we do?

- ◆ Play speaking games
- ◆ Learn how to give great presentations
- ◆ Make posters
- ◆ Use fun kits
- ◆ Laugh!



OK, I'll be there! And I'll bring a friend!

Registration for *Speakeasy*

Name(s): _____

Phone #: _____ Amount due: \$3 per person = _____

Make checks payable to:
DCLA
PO Box 1251
Redmond OR, 97756

For more information contact Tina:
548-6088, ext. 7952
tina.hohman@oregonstate.edu

What's Up?

Advisory Committee Meetings CHANGING! READ THIS, It affects YOU!

As most of you are aware, we are going to change the format of our project committee meetings. These are the horse, livestock, home ec., small animal, dog, and natural resource meetings that we encourage someone from every club to attend. Parents, members, leaders and co-leaders are ALL invited! In the 2008-09 4-H year, we are going to meet with all the committees on the same night.

If you are interested in multiple project areas, you will need to get a parent, co-leader or older member to help, so your club can be represented at all related project areas.

The TENTATIVE schedule is:

6 pm - 6:30 pm ~ an educational component
6:30 - 7:00 pm ~ a general meeting, all areas together
7:00 - 8:00 pm ~ specific project areas meet.
(This could go as late as 8:30 pm)

Candi will rotate between horse, small animal and livestock. Dave will rotate between dog and natural resources and Tina will handle the home economics meeting.

In advance of each meeting, a facilitator and recorder will be assigned. Depending on the project area, these folks may change or remain the same throughout the year. These are important jobs; doing a good job at both of these will keep meetings running smoothly and the 4-H staff informed of the needs of the group.

This will significantly lessen night meetings allowing for other educational opportunities and some much needed evening time.

In the event that we can't accomplish all we need

Thank You Notes!

Did you win an award at fair? Sell an animal? Receive help from a 4-H leader, family member, or someone else who helped make your 4-H experience special? Then it is time to sit down and write thank you notes.

Not knowing someone's address is NOT an excuse, you can find addresses through our office. It's NOT too late—I don't have mine written either. Let's work on this together, a few each day AND letting someone know how much we appreciate their generosity is very important and it makes us feel good too! Get 'em done! ccb

Lego Robotics Clubs

The First Lego League competitive season is over. Central Oregon 4-H Technology has kits (RCX) to loan out to 4-H clubs wanting to participate in Lego club activities, and build projects for the county or state fairs.

Please contact Sarah Cofer at sarah.cofer@oregonstate.edu or 541 771-1411 for more information.

to, we may find it necessary to schedule an additional project area meeting.

All meetings will be held at the North Sister building on the fairgrounds.

The **very tentative** schedule is:

Tuesday, Oct 14th, '08 Tuesday, May 12th, '09,
Tuesday, Jan 13th, '09 Tuesday, Jul 14th, '09
Tuesday, Mar 10th, '09 Tuesday, Sep 8th, '09,

Tuesday, Oct 13th, '09.

No meetings in Nov or Dec. This should avoid major holiday conflicts and allow timely enrollment, pre-fair and post-fair meetings.

We'll give this a try for at least one year and then re-visit in October 2009, to determine if we should continue. Please share your thoughts! Thanks for your flexibility. ccb

What's Up?

Portland Trailblazer's Night

More details will follow, but so you can mark your calendars, we have again scheduled a 4-H night with the Portland Trailblazers. This year will be lots of spring break family fun as we are going March 26, 2009 for an evening game against the Phoenix Suns (who now have Shaq). A large block of the higher level (\$10 seats) have been reserved for us although the more expensive seats are also available at a discounted price. We really had a lot of fun last year so encourage your 4-H families to attend, this is a great way to spend a spring break night.

Couple of details for this year:

We again are doing the courtside kids, which means 20 lucky kids get to high five the blazers as they come on to the court. This year, in order to qualify kids need to be 13 or under and must email me with their name, age, and county before March 1st. We then randomly draw who gets the opportunity and notify them.

At the end of the game we will have access to the basketball court to shoot around and take photos, this is open to everyone who goes and should be pretty fun so make sure your members know.

More information, including official ticket prices and the code to buy tickets online, should follow in coming weeks. *(Sara Miller)*

Leaders & Members Recognition Night DATE CHANGED

Recognition night will now be held on Saturday, November 1, 2008 NOT in December. We're hoping for a large turnout! Lots of fun and dinner too—you don't want to miss this event. ccb

Deschutes County 4-H is Looking for Alumni

Every year the 4-H program says good bye to graduating seniors. It even says good bye to volunteer leaders who have invested several hours in making the program strong and 4-H'ers even stronger. It is a shame to lose contact with these people that have contributed to the value and history of Deschutes County 4-H.

In the interest of creating a Deschutes County 4-H Alumni Association, this is where we can use your help. Many of you have participated in Deschutes County 4-H as a parent, member, leader, or program supporter. Can you help us locate our long lost alums? You can help by forwarding this form to someone you know. Or, simply fill out what you already know and send it back to

Where Are You Now?

Name: _____

Address: _____

City: _____ State: _____

Zip: _____

Phone: _____

Email: _____

Do you have contact information for other Deschutes County 4-H Alumni?

Return to: DC4HALum, 3893 SW Airport Way,
Redmond, OR 97756



Four 4-H Educational Leader Forums – Fall 2008

An OSU Extension 4-H Youth Development Program



All 4-H volunteers, resource leaders, teen volunteers, parents, and staff are invited to attend any location, on any Saturday.

Each educational track (#1, 2, 3) will provide six (6) hours of education, interactive learning, time to ask questions, share ideas, discover resources, and apply learning.

| | |
|---|---|
| <p>September 27, Beaverton Washington County Extension Office 18640 NW. Walker Rd. #1400 South side of Capitol Center Complex (Entrance D1) 1. Focus on Food & Nutrition 2. Get SET for Learning Technology 3. 4-H: Business, Fun, Learning & Leadership!</p> | <p>October 11, Redmond Deschutes County Fairgrounds 3893 SW. Airport Way Bldg: High Dessert Activity Center (Sign=HDAC) 1. Focus on Food & Nutrition 2. Get SET for Learning Technology 3. 4-H: Business, Fun, Learning & Leadership!</p> |
| <p>October 4, Roseburg, Douglas County Umpqua Community College Bldg: Campus Center, 1140 Umpqua College Rd 1. Focus on Food & Nutrition 2. Get SET for Learning Technology 3. Dog Clinic: Obedience & Showmanship</p> | <p>October 25, La Grande, Union County County Extension Office Bldg: Ag Service Center, 10507 N. McAlister Rd 1. Focus on Food & Nutrition 2. Get SET for Learning Technology 3. Dog Clinic: Obedience & Showmanship</p> |

Objectives for the 4-H Volunteer Forums are to:

1. Reach volunteers of every age and interest in all counties.
2. Prepare participants to teach others in local programs.
3. Help 4-H volunteers enhance skills for their unique roles.
4. Acknowledge Oregon 4-H volunteer contributions.
5. Provide resources and promote volunteer networks.
6. Prepare volunteers to provide opportunities for 4-H youth to belong to a group, master skills, be generous, and independent.

PARTNERS in Education and Funding Annual 4-H Leader Forums are planned with Oregon 4-H Leaders' Association, state 4-H Youth Development Program, and local county hosts. Monsanto and the Oregon 4-H Foundation continue to be funding partners for 2008-09 4-H Leader Forums. Their generosity helps to keep fees low.



the

***A pre-registration count is needed to have adequate materials and snacks/lunch available.**

Pre-Registration Form for Fall 2008 Regional 4-H Volunteer Forums

The \$10 fee with grant funds from Monsanto and 4-H Foundation will cover cost of program materials.
 Lunch - Bring your own, or purchase at each Forum location for \$5.

NAME: _____ **COUNTY:** _____
 Please print. Submit info for additional name(s) on separate sheet.

ADDRESS: _____
 House / Apt. / Str. City Zip

PHONE for Emergencies: Home _____ Work or Cell _____

E-MAIL for Pre-Forum Communication: _____

The **LOCATION** I will attend is: _____ Sept. 27 at Beaverton _____ Oct. 11 at Redmond
 _____ Oct. 4 at Roseburg _____ Oct. 25 at LaGrande

The **ONE (6-hour) EDUCATIONAL TRACK** I plan to attend is:
 _____ Food & Nutrition _____ Get SET _____ 4-H: Business...Leadership _____ Dog Clinic

For **LUNCH**, I plan to: _____ Bring my own Lunch _____ Purchase Lunch at the Forum Location for \$5

RETURN ½ page Pre-Registration Form with \$10 fee:

BY: FRIDAY, SEPT 19 - if planning to attend Sept. 27, or Oct. 4 Forums.

BY: FRIDAY, OCT. 3 - if attending Oct. 11 or Oct. 25 Forums.

TO: 2008 4-H Leader Forum, Attn: Mona
105 Ballard Hall, OSU
Corvallis, Oregon 97331-3608

If special physical or learning accommodations are needed, please contact Marilyn, at: 541-737-2794

The OSU Extension 4-H program offers its programs and materials equally to all people.

Highlights from the South County 4-Hers

Sheep Thrills had a great week up at fair and took home the overall herdsmanship award in the sheep barn. Our group would like to especially thank Bob & Shari Marler, the sheep barn bosses, for their support and help while up at fair, as well as the 4-H staff in Redmond without them it would be difficult for our kids to participate.

Shear Delight highlights:

Chloe Sazama - Reserve Champion Sheep Showman - Novice

Michelle Young - Champion Sheep Showman - Intermediate

First Place Club Display

Blue Ribbon on Educational Display - on to State!

Carcass of Merits were awarded to the following Shear Delight members: Riley Aamodt, Larissa Pless, Chloe Sazama, Sean Young

Chloe Sazama- First Place Livestock Judging- Junior Level

Larissa Pless- First place Livestock Judging-Novice

Brownie Buccaneers highlights:

Educational Display - Champion and on to State!

9 of 12 baked goods entries are going on to State! (several champions and reserve champions were awarded at county fair to club members!)

Good luck at State Fair to: Skylar Miller, Kinsey Pinckney, Corinne Byrd, Cameron Byrd, Michelle Young, Mark Young, and Sean Young.

Shear Delight and Brownie Buccaneers had a great time donating their time to work in the 4-H Over the Clover Café (OTC). Members of Boots and Buckles and Silly Sewers/Kitchen Kings and Queens also joined forces with Brownie Buccaneers during the lunch shift. Boots and Buckles enjoyed it so much; they even came up to the fair again to donate their time during an evening shift! A few of us even helped with some late night cinnamon roll preparation!

Kitchen Kings & Queens food club was honored to have Veronica Schneider win the Leadership & Poise award and Rachel Schneider win the Bernice Lawson Memorial Award and the Secure Store High Point Foods and Nutrition award. These awards are quite an honor to receive. The girls were both interviewed and their 4-H records were reviewed. The club educational display on their field trip to the cranberry bogs received a blue.

La Pine Beef Club had a good fair. The kids did a good job in showmanship and the auction went well.

Chief Paulina Riders Horse 4-H club had an awesome fair time. Charisa Bates and Samantha Hollinger placed 9th and 10th in Intermediate Performance classes overall. Kristen Russell and Chrystal Bates placed 9th and 10th in senior performance classes overall. Chrystal qualified for state. Kristen received Champion senior cow working and Reserve Champion in Ranchmanship. Kristen placed 3rd in Senior Ranch Horse overall. Emily Pickering received Champion Senior Flags and receive Reserve Champion in Barrels and Poles earning a spot at state in all three and earned Senior High Point in Gaming. Charisa Bates qualified for state in the key race.

Chief Paulina Riders also worked in the OTC café Sunday morning splitting a shift with

Refined Swine. The 7 member club did a great job working together all weekend long and keeping the barn clean!! Emily Pickering won the Merv & Sally Fleming Scholarship Award for \$1000 toward college. Chrystal Bates was also on the state Horse judging team as well. PS Chrystal earned a red in showmanship at State with a high score and a great experience.

Boots and Buckles Horse 4-H Club put a lot of emphasis on practice this summer with a 6 week lesson series with Marj Bittner and it paid off at fair. Trinton Koch placed 3rd overall in the Junior Ranch Horse classes, Tristan Cox placed 6th overall in the Junior Ranch Horse classes, and Tucker Allen placed 9th overall in the Performance classes (includes Western Equitation, Showmanship & Trail). Tristan Cox received the Junior Reserve Champion for overall Horse Judging and in the Horse Bowl contest.

Refined Swine club was very pleased with their ribbons and also for the fact that all their pigs made weight and were able to sell them at the auction!

The Pork Tenders 4-H Club had 20 kids participate in the Deschutes County Fair. The club won the herdsmanship award for large club in the swine barn. Stephanie Sherfield won a Ralph McNulty Scholarship for a breeding gilt. Once again the kids participated in Fear Factor, and fear is not a factor for our returning intermediate champions. The final total the club raised for the Relay for Life was \$1,985.00. Plans are underway for their return trip to Mazatlan Mexico in the fall of 2009. The trip will be to work with one of the four orphanages in Mazatlan. Their first organizational meeting for 2009 will be in October, at the Sun Mountain Fun Center.

HORSE FAIR RESULTS 2008

HORSE

Class 751100111) Junior English Equitation (Saddle Seat) (Horse and Pony)

HAYDEN, REGION M R

Class 751100112) English Equitation (Saddle Seat), Int (Horse and Pony)

NIGG, NATALIE E B
SIMPSON, NAUTIQUE D W

Class 751100113) English Equitation (Saddle Seat), Sr (Horse and Pony)

HAYDEN, RANSOM M GC, CH, B

Class 751100121) Junior English Equitation (Hunt Seat) (Horse and Pony)

NORDBY, RACHEAL N RG, CH, B
AUSLAND, MIMI C RC, B
RAMSTHEL, AMELIA L B
BENSON, CAMMI J R
KELLY, JAMIE A R
MC CARTHY, KARLYNN G R
MORTON, ABBEY M R
VANDER HOEK, EDEN N R
COX, TRISTAN M R

Class 751100122) English Equitation (Hunt Seat), Int (Horse and Pony)

DILLIN, JESSICA D CH, B
PALACIO, MARI T RC, B
CRABTREE, MORGAN N B
CRAMER, KATIE J B
HOLEMAN, HILLARY M B
MACWHORTER, LAURIE M B
SHOFFNER, ANNA M B
BATES, CHARISA C B
CANT, MIKAYLA M R
COEHLO, MOLLY J R
COOPER, SAMANTHA J R
GRIPPIN, AMANDA R
OLIPHANT, BRIT R R
MITCHELL, TEFNA R R
AGUILAR, NICOLE R W
WRIGHT, KATIE L W
HOLLINGER, SAMANTHA L W

Class 751100123) English Equitation (Hunt Seat), Sr (Horse and Pony)

LINTON, KATIE A RC, B
GANT, MICHELLE L B
GEORGE, COURTNEY A B
HOPP, MICHAEL J B
LONG, CASEY L B
MILLS, MADISON N B
SLOTTER, HENNESSEY M R
SMALLENBERG, AMANDA M R
BATES, CHRYSYAL K R

Class 751100131) Junior Western Equitation (Horse and Pony)

NORDBY, RACHEAL N RC, B
AUSLAND, MIMI C B
BENSON, CAMMI J B
CREW, ASPEN H B
KOCH, TRINTON W B
DUGGAN, KELLEY L B
HAYDEN, REGION M B
KELLY, JAMIE A R
MC CARTHY, KARLYNN G R
MORTON, ABBEY M R
TAYLOR, REBEKAH J R
VANDER HOEK, EDEN N R
VANDER HOEK, ZOE K R
ALLEN, TUCKER W R

IRVIN, KELBI L R
ACHTERHOF, KRISTEN N R
DIAL, DEBORAH B W
RICHARDSON, BILLIE R W

Class 751100132) Western Equitation, Int (Horse and Pony)

MACWHORTER, LAURIE M RG, CH, B
CRABTREE, MORGAN N RC, B
COEHLO, MOLLY J B
DILLIN, JESSICA D B
OLIPHANT, BRIT R B
SKINNER, ROSIE J B
NIGG, NATALIE E B
BAER, ELIZABETH M R
CANT, MIKAYLA M R
CRAMER, KATIE J R
HOLEMAN, HILLARY M R
HOOD, MADISON J R
MOON, EMILY A R
PALACIO, MARI T R
SHOFFNER, ANNA M R
SMITH, MADISON L R
BATES, CHARISA C R
HOLLINGER, SAMANTHA L R
SCHNEIDER, DANIELLE C R
JOHNSON, ASHLEY N R
MITCHELL, TEFNA R R
COOPER, SAMANTHA J W
GRIPPIN, AMANDA W
GROSSMAN, JOY A W
STRAMIELLO, AARON A W
WRIGHT, KATIE L W
KOCH, TARAN S W
COOPER, HANA L W
CYRUS, MICKAELA L W
GARLITZ, CODIE M W
SIMPSON, NAUTIQUE D W

Class 751100160) Hunt Seat Over Fences, Novice (Horse and Pony)

BENSON, CAMMI J R

Class 751100133) Western Equitation, Sr (Horse and Pony)

GANT, MICHELLE L GC, RC, B
HOPP, MICHAEL J CH, B
GEORGE, COURTNEY A B
LINTON, KATIE A B
BATES, CHRYSYAL K B
LONG, CASEY L B
MILLS, MADISON N B
HAYDEN, RANSOM M B
SLOTTER, HENNESSEY M R
SMALLENBERG, AMANDA M R
PICKERING, EMILY A R
RUSSELL, KRISTEN J R
ROSS, SHELBY A R
MOON, ASHLEY M W
PILON, DANIELLE F W

Class 751100145) Horse, Walk/Trot Equitation (Horse and Pony)

DRISKELL, JULIE M B
HOOD, DELANEY J B
LARSEN, SERRON L B
LAUGHLIN, ALEXA J B
MC CLAY, JESSICA R R
MURPHY, JESSLYN P R
WHEELER, CASSIDY JO R
STINSON, JOSHUA G R
DUNCAN, RAINA N R

Class 751100161) Hunt Seat Over Fences, Junior (Horse and Pony)

HAYDEN, REGION M CH, B

Class 751100162) Hunt Seat Over Fences, Int (Horse and Pony)

HENRY, ABBY R CH, B
GRIPPIN, AMANDA R
SIMPSON, NAUTIQUE D R
AGUILAR, NICOLE R W
MITCHELL, TEFNA R W

Class 751100163) Hunt Seat Over Fences, Sr (Horse and Pony)

LINTON, KATIE A CH, B
HAYDEN, RANSOM M W

Class 751100242) Rider Trainer Equitation, Intermediate (Horse and Pony)

DURFEE, BRANDICE W B
SMITH, KAITLIN N B
COOPER, HANA L R
NEWTON, CHANDRA S R

HORSE FAIR RESULTS 2008

Class 751100243) Rider Trainer Equitation, Senior (Horse and Pony)

LINTON, KATIE A CH, B
BEEZLEY, CHRISTA C B

Class 751100311) Junior Trail Horse (Horse and Pony)

HAYDEN, REGION M CH, B
AUSLAND, MIMI C RC, B
KOCH, TRINTON W B
BENSON, CAMMI J R
CREW, ASPEN H R
KELLY, JAMIE A R
MURPHY, JESSLYN P R
DUGGAN, KELLEY L R
APPLEGARTH, COURTNEY R W
HOOD, DELANEY J W
LARSEN, SERRON L W
MC CARTHY, KARLYNN G W
TAYLOR, REBEKAH J W
ALLEN, TUCKER W W
IRVIN, KELBI L W
ROHRICH, CIARA R W
ACHTERHOF, KRISTEN N W
DIAL, DEBORAH B W
HERSCHBACH, SAMANTHA E W
TOBIN, KELSEY N W
RICHARDSON, BILLIE R W

Class 751100312) Trail Horse, Int (Horse and Pony)

CRABTREE, MORGAN N CH, B
SHOFFNER, ANNA M RC, B
DILLIN, JESSICA D B
HOLEMAN, HILLARY M B
MACWHORTER, LAURIE M B
OLIPHANT, BRIT R B
COEHLO, MOLLY J R
CRAMER, KATIE J R
PALACIO, MARI T R
KOCH, TARAN S R
BATES, CHARISA C R
HOLLINGER, SAMANTHA L R
MITCHELL, TEFNA R R
NEWTON, CHANDRA S R
SKINNER, ROSIE J R
NIGG, NATALIE E R
CANT, MIKAYLA M W
COOPER, SAMANTHA J W
GRIPPIN, AMANDA W
HOOD, MADISON J W
SMITH, MADISON L W
STRAMIELLO, AARON A W
TIMM, CIARA M W
COOPER, HANA L W
DIAL, NATE W
SMITH, KAITLIN N W
GARLITZ, CODIE M W

Class 751100411) Pony, Harness, Jr (Horse and Pony)

HAYDEN, REGION M B

Class 751100522) Horse Dressage, Int (Training Lev, Test 3 (Horse and Pony)

MACWHORTER, LAURIE M B
CANT, MIKAYLA M R

Class 751100313) Trail Horse, Sr (Horse and Pony)

HOPP, MICHAEL J CH, B
ROSS, SHELBY A RC, B
GANT, MICHELLE L B
GEORGE, COURTNEY A B
SLOTTER, HENNESSEY M B
RUSSELL, KRISTEN J B
LONG, CASEY L B
MILLS, MADISON N B
HAYDEN, RANSOM M B
BATES, CHRYSTAL K R
PILON, DANIELLE F R
MOON, ASHLEY M W
SMALLENBERG, AMANDA M W
PICKERING, EMILY A W
SITTEL, HEATHER B W
GATES, TARYN L W

Class 751100412) Pony, Driving, Int (Horse and Pony)

HENRY, ABBY R B

Class 751100413) Pony, Driving, Sr (Horse and Pony)

HAYDEN, RANSOM M CH, B

Class 751100501) Horse Dressage, Junior, TL 1 (Horse and Pony)

COX, TRISTAN M R

Class 751100502) Horse Dressage, Intermediate, TL 1 (Horse and Pony)

SHOFFNER, ANNA M B

Class 751100511) Horse Dressage, Junior, TL 2 (Horse and Pony)

BENSON, CAMMI J CH, B
HAYDEN, REGION M B
COX, TRISTAN M W

Class 751100512) Horse Dressage, Int (Training Lev, Test 2) (Horse and Pony)

SHOFFNER, ANNA M B
SIMPSON, NAUTIQUE D R

Class 751100513) Horse Dressage, Sr (Training Lev, Test 2) (Horse and Pony)

HAYDEN, RANSOM M CH, B

Class 751100523) Horse Dressage, Sr (Training Lev, Test 3) (Horse and Pony)

LINTON, KATIE A B
GANT, MICHELLE L R
GEORGE, COURTNEY A R
LONG, CASEY L R
PILON, DANIELLE F W

Class 751100531) Horse, Dressage, Jr, TL4 (Horse and Pony)

HAYDEN, REGION M R

Class 751100532) Horse Dressage, Int (Training Lev, Test 4) (Horse and Pony)

MACWHORTER, LAURIE M
CH, B
CANT, MIKAYLA M R

Class 751100533) Horse Dressage, Sr (Training Lev, Test 4) (Horse and Pony)

LINTON, KATIE A
RC, B
HAYDEN, RANSOM M B
GANT, MICHELLE L R
GEORGE, COURTNEY A R
LONG, CASEY L R
PILON, DANIELLE F R

Class 751100542) Horse Dressage, Int (First Level, Test 1) (Horse and Pony)

NIGG, NATALIE E R

Class 751100552) Horse Dressage, Int (First Level, Test 2) (Horse and Pony)

NIGG, NATALIE E R

Class 751500003) Horse, Showmanship, Senior (Horse and Pony)

ROSS, SHELBY A
GC, RC, B
HOPP, MICHAEL J
CH, B
GANT, MICHELLE L B
GEORGE, COURTNEY A B
SLOTTER, HENNESSEY M B
LINTON, KATIE A B
HAYDEN, RANSOM M B
DRISKELL, JULIE M R
SMALLENBERG, AMANDA M R
BATES, CHRYSTAL K R
PICKERING, EMILY A R
RUSSELL, KRISTEN J R
LONG, CASEY L R

HORSE FAIR RESULTS 2008

MILLS, MADISON N R
 PILON, DANIELLE F R
 JONES, BRADLEY D R
 MOON, ASHLEY M W
 SITTEL, HEATHER B W

Class 751500001) Horse Showmanship, Junior (Horse and Pony)

NORDBY, RACHEAL N CH, B
 AUSLAND, MIMI C B
 CREW, ASPEN H B
 MC CARTHY, KARLYNN G B
 ACHTERHOF, KRISTEN N B
 DUGGAN, KELLEY L B
 HAYDEN, REGION M B
 APPLGARTH, COURTNEY R R
 HOOD, DELANEY J R
 KELLY, JAMIE A R
 LARSEN, SERRON L R
 MURPHY, JESSLYN P R
 RAMSTHEL, AMELIA L R
 TAYLOR, REBEKAH J R
 VANDER HOEK, ZOE K R
 WHEELER, CASSIDY JO R
 COX, TRISTAN M R
 KOCH, TRINTON W R
 ALLEN, TUCKER W R
 DIAL, DEBORAH B R
 MC CLAY, JESSICA R W
 MORTON, ABBEY M W
 VANDER HOEK, EDEN N W
 STINSON, JOSHUA G W
 IRVIN, KELBI L W
 MASSINGALE, SAMANTHA A W
 MASSINGALE, SYDNEY J W
 ROHRICH, CIARA R W
 HARRANG, RACHAEL B W
 HERSCHBACH, SAMANTHA E W
 TOBIN, HALEY R W
 TOBIN, KELSEY N W
 RICHARDSON, BILLIE R W

Class 751500002) Horse, Showmanship, Intermediate (Horse and Pony)

SHOFFNER, ANNA M RG, CH, B
 NIGG, NATALIE E RC, B
 BAER, ELIZABETH M B
 COEHLO, MOLLY J B
 COOPER, SAMANTHA J B
 CRABTREE, MORGAN N B
 CRAMER, KATIE J B
 DILLIN, JESSICA D B
 HOLEMAN, HILLARY M B
 MACWHORTER, LAURIE M B
 PALACIO, MARI T B
 WRIGHT, KATIE L B
 HOLLINGER, SAMANTHA L B
 SCHNEIDER, DANIELLE C B
 COOPER, HANA L B
 JOHNSON, ASHLEY N B
 MITCHELL, TEFNA R B
 NEWTON, CHANDRA S B
 SKINNER, ROSIE J B
 CANT, MIKAYLA M R
 DURFEE, BRANDICE W R
 HOOD, MADISON J R
 LAUGHLIN, ALEXA J R
 MOON, EMILY A R
 SMITH, MADISON L R
 TIMM, CIARA M R

KOCH, TARAN S R
 BATES, CHARISA C R
 CYRUS, MICKAELA L R
 DUNCAN, RAINA N R
 HOPPER, MEGEN A R
 SMITH, KAITLIN N R
 SIMPSON, NAUTIQUE D R
 AGUILAR, NICOLE R W
 GRIPPIN, AMANDA W
 GROSSMAN, JOY A W
 HENRY, ABBY R W
 OLIPHANT, BRIT R W
 RAMSTHEL, ANNALISE D W
 STRAMIELLO, AARON A W
 NOBLE, AHNDREAH M W
 GARLITZ, CODIE M W

THOMAS, COURTNEY C W
 TIMM, CIARA M W
 BATES, CHARISA C W
 DIAL, NATE W
 MITCHELL, TEFNA R W
 SKINNER, ROSIE J W

Class 751700013) Ranch Horse, Ranchmanship, Senior (Horse and Pony)

LINTON, KATIE A CH, B
 RUSSELL, KRISTEN J RC, B
 GANT, MICHELLE L B
 GEORGE, COURTNEY A B
 MILLS, MADISON N B
 GISLER, JANA C R
 LOVISON, KYMALA M R
 MOON, ASHLEY M R
 PERRY, SHAY R
 SLOTER, HENNESSEY M R
 BATES, CHRYSYAL K R
 LONG, CASEY L R
 PILON, DANIELLE F R
 FRAKER, BRITNEY L R
 BEEZLEY, CHRISTA C W
 BIGBY, WHITNEY L W
 HARDING, SHELBY Q W
 PICKERING, EMILY A W
 BILYEU, LINLEY M W
 GATES, TARYN L W
 HAYDEN, RANSOM M W
 JONES, BRADLEY D W

Class 751700021) Ranch Horse, Western Riding, Junior (Horse and Pony)

NORDBY, RACHEAL N CH, B
 HAYDEN, REGION M RC, B
 CREW, ASPEN H B
 KELLY, JAMIE A B
 KOCH, TRINTON W B
 BENSON, CAMMI J R
 ACHTERHOF, KRISTEN N R
 DIAL, DEBORAH B R
 HERSCHBACH, SAMANTHA E R
 RICHARDSON, BILLIE R R
 COX, TRISTAN M W

Class 751700022) Ranch Horse, Western Riding, Intermediate (Horse and Pony)

DILLIN, JESSICA D CH, B
 MACWHORTER, LAURIE M RC, B
 BAER, ELIZABETH M B
 CRABTREE, MORGAN N B
 HOLEMAN, HILLARY M B
 SHOFFNER, ANNA M B
 HOLLINGER, SAMANTHA L B
 SKINNER, ROSIE J B
 DURFEE, BRANDICE W R
 HENRY, ABBY R R
 KOCH, TARAN S R
 BATES, CHARISA C R
 COOPER, HANA L R
 CANT, MIKAYLA M W
 STRAMIELLO, AARON A W
 DIAL, NATE W
 HOPPER, MEGEN A W
 MITCHELL, TEFNA R W

RANCH HORSE

Class 751700010) Horse, In Hand Trail (Horse and Pony)

CYRUS, MICKAELA L B
 VANDER HOEK, EDEN N R
 VANDER HOEK, ZOE K R
 ACHTERHOF, KRISTEN N R
 DUNCAN, RAINA N R
 TOBIN, HALEY R R
 HARRANG, RACHAEL B W

Class 751700011) Ranch Horse, Ranchmanship, Junior (Horse and Pony)

ACHTERHOF, KRISTEN N CH, B
 DIAL, DEBORAH B RC, B
 BENSON, CAMMI J R
 CREW, ASPEN H R
 KELLY, JAMIE A R
 WHEELER, CASSIDY JO R
 COX, TRISTAN M R
 RICHARDSON, BILLIE R R
 KOCH, TRINTON W W
 HAYDEN, REGION M W

Class 751700012) Ranch Horse, Ranchmanship, Intermediate (Horse and Pony)

PAGE, KASSI J CH, B
 SHOFFNER, ANNA M RC, B
 MARKHAM, KARLEE C B
 BAER, ELIZABETH M R
 CANT, MIKAYLA M R
 CRABTREE, MORGAN N R
 CRAMER, KATIE J R
 DILLIN, JESSICA D R
 DURFEE, BRANDICE W R
 PERRY, LINDY A R
 KOCH, TARAN S R
 HOLLINGER, SAMANTHA L R
 COOPER, HANA L R
 HOPPER, MEGEN A R
 SMITH, KAITLIN N R
 GARLITZ, CODIE M R
 SIMPSON, NAUTIQUE D R
 AGUILAR, NICOLE R W
 HENRY, ABBY R W
 HEYWOOD, JUSTINE W
 HOLEMAN, HILLARY M W
 MACWHORTER, LAURIE M W
 RAMSTHEL, ANNALISE D W
 STRAMIELLO, AARON A W

HORSE FAIR RESULTS 2008

Class 751700023) Ranch Horse, Western Riding, Senior (Horse and Pony)

| | |
|-----------------------|-------|
| LONG, CASEY L | CH, B |
| HAYDEN, RANSOM M | RC, B |
| BEEZLEY, CHRISTA C | B |
| GANT, MICHELLE L | B |
| GEORGE, COURTNEY A | B |
| HENRY, SHELBY S | B |
| LINTON, KATIE A | B |
| LOVISON, KYMALA M | R |
| SLOTTER, HENNESSEY M | R |
| SMALLENBERG, AMANDA M | R |
| BATES, CRYSTAL K | R |
| PICKERING, EMILY A | R |
| RUSSELL, KRISTEN J | R |
| MILLS, MADISON N | R |
| PILON, DANIELLE F | R |
| PERRY, SHAY | W |

Class 751700031) Ranch Horse, Cow Work, Junior (Horse and Pony)

| | |
|----------------------|-------|
| CREW, ASPEN H | CH, B |
| DIAL, DEBORAH B | RC, B |
| BENSON, CAMMI J | R |
| KELLY, JAMIE A | R |
| COX, TRISTAN M | R |
| KOCH, TRINTON W | R |
| ACHTERHOF, KRISTEN N | R |
| HAYDEN, REGION M | W |

Class 751700032) Ranch Horse, Cow Work, Intermediate (Horse and Pony)

| | |
|-----------------------|-------|
| DILLIN, JESSICA D | CH, B |
| MITCHELL, TEFNA R | RC, B |
| CRABTREE, MORGAN N | B |
| HEYWOOD, JUSTINE | B |
| SHOFFNER, ANNA M | B |
| HOLLINGER, SAMANTHA L | B |
| DURFEE, BRANDICE W | R |
| GRIPPIN, AMANDA | R |
| HENRY, ABBY R | R |
| MACWHORTER, LAURIE M | R |
| MARKHAM, KARLEE C | R |
| THOMAS, COURTNEY C | R |
| KOCH, TARAN S | R |
| BATES, CHARISA C | R |
| COOPER, HANA L | R |
| DIAL, NATE | R |
| DUNCAN, RAINA N | R |
| HOPPER, MEGAN A | R |
| GARLITZ, CODIE M | R |
| SIMPSON, NAUTIQUE D | R |

Class 751700033) Ranch Horse, Cow Work, Senior (Horse and Pony)

| | |
|--------------------|-------|
| RUSSELL, KRISTEN J | CH, B |
| HARDING, SHELBY Q | RC, B |
| HENRY, SHELBY S | B |
| PERRY, SHAY | B |
| LINTON, KATIE A | B |
| BEEZLEY, CHRISTA C | R |
| GANT, MICHELLE L | R |
| GEORGE, COURTNEY A | R |

| | |
|----------------------|---|
| SLOTTER, HENNESSEY M | R |
| PICKERING, EMILY A | R |
| BILYEU, LINLEY M | R |
| LONG, CASEY L | R |
| MILLS, MADISON N | R |
| PILON, DANIELLE F | R |
| FRAKER, BRITTNEY L | R |
| HAYDEN, RANSOM M | R |
| GISLER, JANA C | W |
| LOVISON, KYMALA M | W |
| BATES, CRYSTAL K | W |

Class 751700040) Ranch Horse, Roping, Beginner (Horse and Pony)

| | |
|------------------|---|
| KOCH, TARAN S | B |
| BIGBY, WHITNEY L | R |

Class 751700041) Ranch Horse, Roping, Junior (Horse and Pony)

| | |
|------------------------|-------|
| DIAL, DEBORAH B | CH, B |
| HAYDEN, REGION M | RC, B |
| KOCH, TRINTON W | B |
| CREW, ASPEN H | R |
| WHEELER, CASSIDY JO | R |
| COX, TRISTAN M | R |
| ACHTERHOF, KRISTEN N | R |
| BENSON, CAMMI J | W |
| NORDBY, RACHEAL N | W |
| HERSCHBACH, SAMANTHA E | W |
| RICHARDSON, BILLIE R | W |

Class 751700042) Ranch Horse, Roping, Intermediate (Horse and Pony)

| | |
|----------------------|---|
| CRABTREE, MORGAN N | R |
| DILLIN, JESSICA D | R |
| DURFEE, BRANDICE W | R |
| MACWHORTER, LAURIE M | R |
| SHOFFNER, ANNA M | R |
| STRAMIELLO, AARON A | R |
| COOPER, HANA L | R |
| DIAL, NATE | R |
| HOPPER, MEGAN A | R |
| MITCHELL, TEFNA R | R |

Class 751700043) Ranch Horse, Roping, Senior (Horse and Pony)

| | |
|----------------------|-------|
| LONG, CASEY L | CH, B |
| BEEZLEY, CHRISTA C | R |
| GEORGE, COURTNEY A | R |
| LOVISON, KYMALA M | R |
| SLOTTER, HENNESSEY M | R |
| RUSSELL, KRISTEN J | R |
| HAYDEN, RANSOM M | R |
| GANT, MICHELLE L | W |
| LINTON, KATIE A | W |

Class 751700051) Ranch Horse, Trail, Junior (Horse and Pony)

| | |
|------------------|-------|
| HAYDEN, REGION M | CH, B |
| CREW, ASPEN H | RC, B |
| BENSON, CAMMI J | B |
| KELLY, JAMIE A | B |
| KOCH, TRINTON W | B |
| DIAL, DEBORAH B | B |
| COX, TRISTAN M | R |

Class 751700052) Ranch Horse, Trail, Intermediate (Horse and Pony)

| | |
|-----------------------|-------|
| DILLIN, JESSICA D | CH, B |
| HOPPER, MEGAN A | RC, B |
| CRABTREE, MORGAN N | B |
| DURFEE, BRANDICE W | B |
| HENRY, ABBY R | B |
| MACWHORTER, LAURIE M | B |
| SHOFFNER, ANNA M | B |
| BATES, CHARISA C | R |
| HOLLINGER, SAMANTHA L | R |
| COOPER, HANA L | R |
| DIAL, NATE | R |
| MITCHELL, TEFNA R | R |
| AGUILAR, NICOLE R | W |
| CANT, MIKAYLA M | W |
| PAGE, KASSI J | W |
| PERRY, LINDY A | W |
| RAMSTHEL, ANNALISE D | W |
| STRAMIELLO, AARON A | W |
| KOCH, TARAN S | W |
| SMITH, KAITLIN N | W |

Class 751700053) Ranch Horse, Trail, Senior (Horse and Pony)

| | |
|----------------------|-------|
| LONG, CASEY L | CH, B |
| LINTON, KATIE A | RC, B |
| GANT, MICHELLE L | B |
| HENRY, SHELBY S | B |
| LOVISON, KYMALA M | B |
| SLOTTER, HENNESSEY M | B |
| RUSSELL, KRISTEN J | B |
| PILON, DANIELLE F | B |
| HAYDEN, RANSOM M | B |
| BEEZLEY, CHRISTA C | R |
| GEORGE, COURTNEY A | R |
| PERRY, SHAY | R |
| BATES, CRYSTAL K | R |
| PICKERING, EMILY A | R |
| MILLS, MADISON N | R |

GYMKHANA

Class 751800011) Gaming, Figure 8, Junior (Horse and Pony)

| | |
|----------------------|---|
| BENSON, CAMMI J | B |
| CREW, ASPEN H | B |
| HOOD, DELANEY J | B |
| KELLY, JAMIE A | B |
| LARSEN, SERRON L | B |
| MC CARTHY, KARLYNN G | B |
| MORTON, ABBEY M | B |
| MURPHY, JESSLYN P | B |
| NORDBY, RACHEAL N | B |
| TAYLOR, REBEKAH J | B |
| VANDER HOEK, EDEN N | B |
| VANDER HOEK, ZOE K | B |
| COX, TRISTAN M | B |
| KOCH, TRINTON W | B |
| ALLEN, TUCKER W | B |
| ACHTERHOF, KRISTEN N | B |
| DIAL, DEBORAH B | B |
| DUGGAN, KELLEY L | B |
| TOBIN, KELSEY N | B |
| HAYDEN, REGION M | B |
| RICHARDSON, BILLIE R | B |
| APPLEGARTH, COURTNEY | W |
| ROHRICH, CIARA R | W |

HORSE FAIR RESULTS 2008

Class 751800012) Gaming, Figure 8, Intermediate (Horse and Pony)

| | |
|-----------------------|---|
| BAER, ELIZABETH M | B |
| CANT, MIKAYLA M | B |
| COEHLO, MOLLY J | B |
| COOPER, SAMANTHA J | B |
| CRABTREE, MORGAN N | B |
| CRAMER, KATIE J | B |
| DILLIN, JESSICA D | B |
| DURFEE, BRANDICE W | B |
| GRIPPIN, AMANDA | B |
| GROSSMAN, JOY A | B |
| HENRY, ABBY R | B |
| HEYWOOD, JUSTINE | B |
| HOLEMAN, HILLARY M | B |
| HOOD, MADISON J | B |
| MACWHORTER, LAURIE M | B |
| MARKHAM, KARLEE C | B |
| OLIPHANT, BRIT R | B |
| PAGE, KASSI J | B |
| PALACIO, MARI T | B |
| PERRY, LINDY A | B |
| SHOFFNER, ANNA M | B |
| SMITH, MADISON L | B |
| STRAMIELLO, AARON A | B |
| THOMAS, COURTNEY C | B |
| TIMM, CIARA M | B |
| WRIGHT, KATIE L | B |
| KOCH, TARAN S | B |
| BATES, CHARISA C | B |
| HOLLINGER, SAMANTHA L | B |
| SCHNEIDER, DANIELLE C | B |
| COOPER, HANA L | B |
| DIAL, NATE | B |
| JOHNSON, ASHLEY N | B |
| MITCHELL, TEFNA R | B |
| SMITH, KAITLIN N | B |
| SIMPSON, NAUTIQUE D | B |
| MOON, EMILY A | W |
| HOPPER, MEGEN A | W |

Class 751800013) Gaming, Figure 8, Senior (Horse and Pony)

| | |
|----------------------|---|
| GANT, MICHELLE L | B |
| GEORGE, COURTNEY A | B |
| HARDING, SHELBY Q | B |
| HENRY, SHELBY S | B |
| LOVISON, KYMALA M | B |
| MOON, ASHLEY M | B |
| NIPPER, MORGAN E | B |
| PERRY, SHAY | B |
| SLOTTER, HENNESSEY M | B |
| SMALLENBERG, AMANDA | B |
| BATES, CHRYSAL K | B |
| PICKERING, EMILY A | B |
| RUSSELL, KRISTEN J | B |
| SITTEL, HEATHER B | B |
| LONG, CASEY L | B |
| PILON, DANIELLE F | B |
| GATES, TARYN L | B |
| FRAKER, BRITTNEY L | B |
| JONES, BRADLEY D | B |
| DRISKELL, JULIE M | W |

Class 751800021) Gaming, Barrels, Junior (Horse and Pony)

| | |
|----------------------|---|
| APPLEGARTH, COURTNEY | B |
| CREW, ASPEN H | B |
| LARSEN, SERRON L | B |

| | |
|------------------------|---|
| MC CARTHY, KARLYNN G | B |
| MORTON, ABBEY M | B |
| MURPHY, JESSLYN P | B |
| NORDBY, RACHEAL N | B |
| TAYLOR, REBEKAH J | B |
| VANDER HOEK, EDEN N | B |
| VANDER HOEK, ZOE K | B |
| COX, TRISTAN M | B |
| KOCH, TRINTON W | B |
| STINSON, JOSHUA G | B |
| ALLEN, TUCKER W | B |
| IRVIN, KELBI L | B |
| ROHRICH, CIARA R | B |
| ACHERTERHOF, KRISTEN N | B |
| DIAL, DEBORAH B | B |
| DUGGAN, KELLEY L | B |
| TOBIN, KELSEY N | B |
| HAYDEN, REGION M | B |
| RICHARDSON, BILLIE R | B |
| BENSON, CAMMI J | W |
| HOOD, DELANEY J | W |
| KELLY, JAMIE A | W |

Class 751800022) Gaming, Barrels, Intermediate (Horse and Pony)

| | |
|-----------------------|---|
| BAER, ELIZABETH M | B |
| CANT, MIKAYLA M | B |
| COEHLO, MOLLY J | B |
| COOPER, SAMANTHA J | B |
| CRABTREE, MORGAN N | B |
| CRAMER, KATIE J | B |
| DILLIN, JESSICA D | B |
| GRIPPIN, AMANDA | B |
| GROSSMAN, JOY A | B |
| HENRY, ABBY R | B |
| HEYWOOD, JUSTINE | B |
| HOLEMAN, HILLARY M | B |
| HOOD, MADISON J | B |
| MARKHAM, KARLEE C | B |
| MOON, EMILY A | B |
| OLIPHANT, BRIT R | B |
| PAGE, KASSI J | B |
| PALACIO, MARI T | B |
| PERRY, LINDY A | B |
| SHOFFNER, ANNA M | B |
| SMITH, MADISON L | B |
| WRIGHT, KATIE L | B |
| KOCH, TARAN S | B |
| BATES, CHARISA C | B |
| HOLLINGER, SAMANTHA L | B |
| DIAL, NATE | B |
| HOPPER, MEGEN A | B |
| JOHNSON, ASHLEY N | B |
| SMITH, KAITLIN N | B |
| GARLITZ, CODIE M | B |
| SIMPSON, NAUTIQUE D | B |
| DURFEE, BRANDICE W | R |
| TIMM, CIARA M | R |
| MITCHELL, TEFNA R | R |
| MACWHORTER, LAURIE M | W |
| THOMAS, COURTNEY C | W |
| COOPER, HANA L | W |

Class 751800023) Gaming, Barrels, Senior (Horse and Pony)

| | |
|--------------------|---|
| GEORGE, COURTNEY A | B |
| HENRY, SHELBY S | B |
| LOVISON, KYMALA M | B |

| | |
|----------------------|---|
| MOON, ASHLEY M | B |
| NIPPER, MORGAN E | B |
| PERRY, SHAY | B |
| SLOTTER, HENNESSEY M | B |
| SMALLENBERG, AMANDA | B |
| PICKERING, EMILY A | B |
| RUSSELL, KRISTEN J | B |
| SITTEL, HEATHER B | B |
| LONG, CASEY L | B |
| PILON, DANIELLE F | B |
| GATES, TARYN L | B |
| FRAKER, BRITTNEY L | B |
| HAYDEN, RANSOM M | B |
| GANT, MICHELLE L | R |
| HARDING, SHELBY Q | R |
| DRISKELL, JULIE M | W |
| BATES, CHRYSAL K | W |
| JONES, BRADLEY D | W |

Class 751800031) Gaming, Key Race, Junior (Horse and Pony)

| | |
|------------------------|---|
| APPLEGARTH, COURTNEY | B |
| BENSON, CAMMI J | B |
| HOOD, DELANEY J | B |
| KELLY, JAMIE A | B |
| LARSEN, SERRON L | B |
| MORTON, ABBEY M | B |
| MURPHY, JESSLYN P | B |
| NORDBY, RACHEAL N | B |
| VANDER HOEK, EDEN N | B |
| VANDER HOEK, ZOE K | B |
| WHEELER, CASSIDY JO | B |
| COX, TRISTAN M | B |
| STINSON, JOSHUA G | B |
| ALLEN, TUCKER W | B |
| IRVIN, KELBI L | B |
| ROHRICH, CIARA R | B |
| ACHERTERHOF, KRISTEN N | B |
| DIAL, DEBORAH B | B |
| DUGGAN, KELLEY L | B |
| TOBIN, KELSEY N | B |
| RICHARDSON, BILLIE R | B |
| KOCH, TRINTON W | R |
| HAYDEN, REGION M | R |
| CREW, ASPEN H | W |

Class 751800033) Gaming, Key Race, Senior (Horse and Pony)

| | |
|-----------------------|---|
| GANT, MICHELLE L | B |
| GEORGE, COURTNEY A | B |
| HARDING, SHELBY Q | B |
| HENRY, SHELBY S | B |
| MOON, ASHLEY M | B |
| PERRY, SHAY | B |
| SLOTTER, HENNESSEY M | B |
| SMALLENBERG, AMANDA M | B |
| BATES, CHRYSAL K | B |
| RUSSELL, KRISTEN J | B |
| SITTEL, HEATHER B | B |
| BILYEU, LINLEY M | B |
| GATES, TARYN L | B |
| FRAKER, BRITTNEY L | B |
| JONES, BRADLEY D | B |
| HAYDEN, RANSOM M | R |
| LOVISON, KYMALA M | W |
| PICKERING, EMILY A | W |
| LONG, CASEY L | W |
| PILON, DANIELLE F | W |

HORSE FAIR RESULTS 2008

Class 751800032) Gaming, Key Race, Intermediate (Horse and Pony)

| | |
|-----------------------|---|
| BAER, ELIZABETH M | B |
| CANT, MIKAYLA M | B |
| COEHLO, MOLLY J | B |
| COOPER, SAMANTHA J | B |
| CRABTREE, MORGAN N | B |
| CRAMER, KATIE J | B |
| DILLIN, JESSICA D | B |
| DURFEE, BRANDICE W | B |
| GRIPPIN, AMANDA | B |
| GROSSMAN, JOY A | B |
| HENRY, ABBY R | B |
| HEYWOOD, JUSTINE | B |
| MOON, EMILY A | B |
| OLIPHANT, BRIT R | B |
| PAGE, KASSI J | B |
| SHOFFNER, ANNA M | B |
| THOMAS, COURTNEY C | B |
| WRIGHT, KATIE L | B |
| KOCH, TARAN S | B |
| BATES, CHARISA C | B |
| COOPER, HANA L | B |
| DIAL, NATE | B |
| HOPPER, MEGEN A | B |
| JOHNSON, ASHLEY N | B |
| MITCHELL, TEFNA R | B |
| SMITH, KAITLIN N | B |
| GARLITZ, CODIE M | B |
| SIMPSON, NAUTIQUE D | B |
| AGUILAR, NICOLE R | W |
| HOLEMAN, HILLARY M | W |
| HOOD, MADISON J | W |
| MARKHAM, KARLEE C | W |
| PALACIO, MARI T | W |
| STRAMIELLO, AARON A | W |
| TIMM, CIARA M | W |
| HOLLINGER, SAMANTHA L | W |
| SCHNEIDER, DANIELLE C | W |

Class 751800041) Gaming, Pole Bending, Junior (Horse and Pony)

| | |
|----------------------|---|
| BENSON, CAMMI J | B |
| CREW, ASPEN H | B |
| KELLY, JAMIE A | B |
| LARSEN, SERRON L | B |
| MORTON, ABBEY M | B |
| NORDBY, RACHEAL N | B |
| VANDER HOEK, EDEN N | B |
| KOCH, TRINTON W | B |
| ALLEN, TUCKER W | B |
| ROHRICH, CIARA R | B |
| ACHTERHOF, KRISTEN N | B |
| DIAL, DEBORAH B | B |
| DUGGAN, KELLEY L | B |
| TOBIN, KELSEY N | B |
| RICHARDSON, BILLIE R | B |
| VANDER HOEK, ZOE K | R |
| HAYDEN, REGION M | R |
| HOOD, DELANEY J | W |
| MURPHY, JESSLYN P | W |
| WHEELER, CASSIDY JO | W |
| COX, TRISTAN M | W |

Class 751800042) Gaming, Pole Bending, Intermediate (Horse and Pony)

| | |
|-----------------------|---|
| BAER, ELIZABETH M | B |
| CANT, MIKAYLA M | B |
| COEHLO, MOLLY J | B |
| COOPER, SAMANTHA J | B |
| CRAMER, KATIE J | B |
| DILLIN, JESSICA D | B |
| GRIPPIN, AMANDA | B |
| GROSSMAN, JOY A | B |
| HENRY, ABBY R | B |
| HEYWOOD, JUSTINE | B |
| HOLEMAN, HILLARY M | B |
| HOOD, MADISON J | B |
| MARKHAM, KARLEE C | B |
| MOON, EMILY A | B |
| OLIPHANT, BRIT R | B |
| PERRY, LINDY A | B |
| SHOFFNER, ANNA M | B |
| THOMAS, COURTNEY C | B |
| TIMM, CIARA M | B |
| WRIGHT, KATIE L | B |
| KOCH, TARAN S | B |
| BATES, CHARISA C | B |
| HOLLINGER, SAMANTHA L | B |
| COOPER, HANA L | B |
| DIAL, NATE | B |
| HOPPER, MEGEN A | B |
| JOHNSON, ASHLEY N | B |
| MITCHELL, TEFNA R | B |
| GARLITZ, CODIE M | B |
| SIMPSON, NAUTIQUE D | B |
| CRABTREE, MORGAN N | R |
| AGUILAR, NICOLE R | W |
| PAGE, KASSI J | W |
| PALACIO, MARI T | W |
| RAMSTHEL, ANNALISE D | W |
| STRAMIELLO, AARON A | W |
| SMITH, KAITLIN N | W |

Class 751800043) Gaming, Pole Bending, Senior (Horse and Pony)

| | |
|----------------------|---|
| GANT, MICHELLE L | B |
| GEORGE, COURTNEY A | B |
| HARDING, SHELBY Q | B |
| HENRY, SHELBY S | B |
| SLOTTER, HENNESSEY M | B |
| BATES, CRYSTAL K | B |
| PICKERING, EMILY A | B |
| SITTEL, HEATHER B | B |
| LONG, CASEY L | B |
| PILON, DANIELLE F | B |
| GATES, TARYN L | B |
| FRAKER, BRITTNEY L | B |
| HAYDEN, RANSOM M | B |
| JONES, BRADLEY D | B |
| LOVISONNE, KYMALA M | R |
| RUSSELL, KRISTEN J | R |
| MOON, ASHLEY M | W |
| PERRY, SHAY | W |
| SMALLENBERG, AMANDA | W |
| BILYEU, LINLEY M | W |

Class 751800051) Gaming, Flag Race, Junior (Horse and Pony)

| | |
|------------------|---|
| BENSON, CAMMI J | B |
| KELLY, JAMIE A | B |
| LARSEN, SERRON L | B |

| | |
|----------------------|---|
| MORTON, ABBEY M | B |
| MURPHY, JESSLYN P | B |
| NORDBY, RACHEAL N | B |
| VANDER HOEK, EDEN N | B |
| VANDER HOEK, ZOE K | B |
| COX, TRISTAN M | B |
| KOCH, TRINTON W | B |
| ALLEN, TUCKER W | B |
| IRVIN, KELBI L | B |
| ROHRICH, CIARA R | B |
| ACHTERHOF, KRISTEN N | B |
| DIAL, DEBORAH B | B |
| TOBIN, KELSEY N | B |
| HAYDEN, REGION M | B |
| RICHARDSON, BILLIE R | B |
| CREW, ASPEN H | W |
| STINSON, JOSHUA G | W |
| DUGGAN, KELLEY L | W |

Class 751800052) Gaming, Flag Race, Intermediate (Horse and Pony)

| | |
|-----------------------|---|
| BAER, ELIZABETH M | B |
| CANT, MIKAYLA M | B |
| COEHLO, MOLLY J | B |
| COOPER, SAMANTHA J | B |
| CRABTREE, MORGAN N | B |
| CRAMER, KATIE J | B |
| DILLIN, JESSICA D | B |
| DURFEE, BRANDICE W | B |
| GRIPPIN, AMANDA | B |
| HENRY, ABBY R | B |
| HOLEMAN, HILLARY M | B |
| HOOD, MADISON J | B |
| MARKHAM, KARLEE C | B |
| MOON, EMILY A | B |
| OLIPHANT, BRIT R | B |
| PAGE, KASSI J | B |
| PALACIO, MARI T | B |
| SHOFFNER, ANNA M | B |
| STRAMIELLO, AARON A | B |
| THOMAS, COURTNEY C | B |
| TIMM, CIARA M | B |
| WRIGHT, KATIE L | B |
| KOCH, TARAN S | B |
| BATES, CHARISA C | B |
| HOLLINGER, SAMANTHA L | B |
| COOPER, HANA L | B |
| HOPPER, MEGEN A | B |
| JOHNSON, ASHLEY N | B |
| MITCHELL, TEFNA R | B |
| SMITH, KAITLIN N | B |

Class 751800053) Gaming, Flag Race, Senior (Horse and Pony)

| | |
|----------------------|---|
| GANT, MICHELLE L | B |
| GEORGE, COURTNEY A | B |
| HENRY, SHELBY S | B |
| LOVISONNE, KYMALA M | B |
| MOON, ASHLEY M | B |
| PERRY, SHAY | B |
| SLOTTER, HENNESSEY M | B |
| SMALLENBERG, AMANDA | B |
| BATES, CRYSTAL K | B |
| PICKERING, EMILY A | B |
| RUSSELL, KRISTEN J | B |
| SITTEL, HEATHER B | B |
| BILYEU, LINLEY M | B |
| LONG, CASEY L | B |
| PILON, DANIELLE F | B |
| GATES, TARYN L | B |

HORSE FAIR RESULTS 2008

Class 75180002) Horse Bowl Contest, Intermediate (Horse and Pony)

| | |
|----------------------|-------|
| SHOFFNER, ANNA M | CH, B |
| SIMPSON, NAUTIQUE D | RC, B |
| PERRY, LINDY A | B |
| RAMSTHEL, ANNALISE D | B |
| DIAL, NATE | B |
| SMITH, KAITLIN N | B |
| MOON, EMILY A | R |
| MITCHELL, TEFNA R | R |
| DINSMOOR, ALICIA A | R |

Class 75180003) Horse Bowl Contest, Senior (Horse and Pony)

| | |
|-----------------------|-------|
| GANT, MICHELLE L | CH, B |
| SMALLENBERG, AMANDA M | RC, B |
| MOON, ASHLEY M | B |
| PERRY, SHAY | B |
| MILLS, MADISON N | B |

Class 751900001) Horse Judging Contest, Junior (Horse and Pony)

| | |
|----------------------|-------|
| RAMSTHEL, AMELIA L | CH, B |
| COX, TRISTAN M | RC, B |
| AGUILAR, MICHELLE M | B |
| HARRANG, RACHAEL B | B |
| HAYDEN, REGION M | B |
| BRINKLEY, SHELBY L | R |
| MORTON, ABBEY M | R |
| WHEELER, CASSIDY JO | R |
| STINSON, JOSHUA G | R |
| ALLEN, TUCKER W | R |
| ACHTERHOF, KRISTEN N | R |
| DIAL, DEBORAH B | R |
| HANKINS, MELISSA L | R |

Class 751900002) Horse Judging Contest, Intermediate (Horse and Pony)

| | |
|----------------------|-------|
| PERRY, LINDY A | CH, B |
| RAMSTHEL, ANNALISE D | RC, B |
| AGUILAR, NICOLE R | B |
| CRAMER, KATIE J | B |
| MACWHORTER, LAURIE M | B |
| MOON, EMILY A | B |
| SHOFFNER, ANNA M | B |
| BATES, CHARISA C | B |
| MITCHELL, TEFNA R | B |
| SMITH, KAITLIN N | B |
| COOPER, SAMANTHA J | R |
| SIMPSON, NAUTIQUE D | R |
| MOORE, PARKER B | W |
| JOHNSON, ASHLEY N | W |

Class 751900003) Horse Judging Contest, Senior (Horse and Pony)

| | |
|---------------------------|-------|
| SCHTEIDEN, ELIZABETH DIAL | CH, B |
| GANT, MICHELLE L | C, B |
| BIGBY, WHITNEY L | B |
| MACWHORTER, SARAH M | B |
| MOON, ASHLEY M | B |
| PERRY, SHAY | B |
| SMALLENBERG, AMANDA M | B |

| | |
|--------------------|---|
| BATES, CHRYSTAL K | B |
| HAYDEN, RANSOM M | B |
| GISLER, JANA C | W |
| GATES, TARYN L | W |
| FRAKER, BRITTNEY L | W |

Class 751900011) Horse, Hippology, Junior (Horse and Pony)

| | |
|----------------------|-------|
| RAMSTHEL, AMELIA L | CH, B |
| HAYDEN, REGION M | RC, B |
| BRINKLEY, SHELBY L | B |
| MORTON, ABBEY M | B |
| COX, TRISTAN M | B |
| ALLEN, TUCKER W | B |
| ACHTERHOF, KRISTEN N | B |
| DIAL, DEBORAH B | B |
| HANKINS, MELISSA L | B |
| HARRANG, RACHAEL B | B |
| AGUILAR, MICHELLE M | R |
| WHEELER, CASSIDY JO | R |
| STINSON, JOSHUA G | R |

Class 751900012) Horse, Hippology, Intermediate (Horse and Pony)

| | |
|----------------------|-------|
| PERRY, LINDY A | CH, B |
| SHOFFNER, ANNA M | RC, B |
| AGUILAR, NICOLE R | B |
| CRAMER, KATIE J | B |
| MACWHORTER, LAURIE M | B |
| MITCHELL, TEFNA R | B |
| SMITH, KAITLIN N | B |
| SIMPSON, NAUTIQUE D | B |
| COOPER, SAMANTHA J | R |
| MOON, EMILY A | R |
| RAMSTHEL, ANNALISE D | R |
| BATES, CHARISA C | R |
| MOORE, PARKER B | W |
| JOHNSON, ASHLEY N | W |

Class 751900013) Horse, Hippology, Senior (Horse and Pony)

| | |
|---------------------------|-------|
| GANT, MICHELLE L | CH, B |
| PERRY, SHAY | RC, B |
| MACWHORTER, SARAH M | B |
| MOON, ASHLEY M | B |
| SMALLENBERG, AMANDA M | B |
| BATES, CHRYSTAL K | B |
| SCHTEIDEN, ELIZABETH DIAL | B |
| FRAKER, BRITTNEY L | B |
| HAYDEN, RANSOM M | B |
| BIGBY, WHITNEY L | R |
| GISLER, JANA C | R |
| GATES, TARYN L | R |

Ranger and Rhino Make Light Work

The Ranger and Rhino you saw Candi and Houston driving during fair came from some very supportive local vendors. Pro Caliber and Cascade Motor Sports, both of Bend, loaned the 4-H program the use of these motorized work horses for the duration of the fair. When I asked the owners and managers of these businesses if 4-H could use their equipment, the answer was an enthusiastic Yes!. The next time you think about purchasing an ATV, dirt bike, or utility vehicle; give our friends at Pro Caliber and Cascade Motor Sports a visit. I am sure they will treat you just as they treated 4-H. Thanks Pro Caliber and Cascade Motor Sports for your support. djw



CHARACTER COUNTS!

CHARACTER COUNTS! in Deschutes County 4-H

The Six Pillars (Trustworthiness, Respect, Responsibility, Fairness, Caring, and Citizenship; and the colors blue, yellow, green, orange, red, and purple) are representative of the culture of character within the Deschutes County 4-H program.

Trustworthiness

Be honest • Don't deceive, cheat or steal • Be reliable — do what you say you'll do • Have the courage to do the right thing • Build a good reputation • Be loyal — stand by your family, friends and country

Respect

Treat others with respect; follow the Golden Rule • Be tolerant of differences • Use good manners, not bad language • Be considerate of the feelings of others • Don't threaten, hit or hurt anyone • Deal peacefully with anger, insults and disagreements

Responsibility

Do what you are supposed to do • Persevere: keep on trying! • Always do your best • Use self-control • Be self-disciplined • Think before you act — consider the consequences • Be accountable for your choices

Fairness

Play by the rules • Take turns and share • Be open-minded; listen to others • Don't take advantage of others • Don't blame others carelessly

Caring

Be kind • Be compassionate and show you care • Express gratitude • Forgive others • Help people in need

Citizenship

Do your share to make your school and community better • Cooperate • Get involved in community affairs • Stay informed; vote • Be a good neighbor • Obey laws and rules • Respect authority • Protect the environment

The Six Pillars of Character are not a part of the 4-H program curricula as much as they form the foundation on which the 4-H program rests. The Deschutes County 4-H program has been a part of the CHARACTER COUNTS! coalition since 2005.

HIGH DESERT CHALLENGE COURSE

High Desert Challenge Course



When and where are gender and age not a barrier to communication? It is when men and women of all ages are 30 feet above the ground on the High Desert Challenge Course located on the northeast side of the fairgrounds.

Since its opening, the HDCC has proven itself to be a challenge and great equalizer for youth and adults in breaking down certain strongly held stereotypes. Apparently, the vertical distance above terra firma has a way of making people see eye to eye for the first time.

The group is diverse for a couple of reasons.

First, it provides a good source of volunteers to help out when 4-H clubs, schools, and other youth

development programs want to access the course.

Two, when schools and organizations have their own staff trained to facilitate the HDCC they are able to access the course on their own time frame and more importantly without any cost.

Starting in the fall, the HDCC will start taking reservation from 4-H clubs to get up on the course. This is a perfect club activity for groups wanting to get a jump on the new 4-H year.

The HDCC stands ready with an invitation to schools and positive youth development

organizations to access the course as an integral part of each school or organization's education or youth development plan.

My thanks to Bill Conklin, Chelsea Conklin, Eric Steensen, Toni Stephan, Rocky Bessette, Mandy Schmidt, and John Kailey for answering the call to volunteer their time and expertise on the HDCC. You are appreciated in innumerable ways.

You can email your questions to

info@hdcchome.com or call 541-548-6088 to speak with the HDCC faculty. djw



New Leader Training

New leader applicants will be required to attend new leader training and an orientation with a mentor to reach 'provisional' status. A follow up of three hours additional educational clinics/classes/programs (not advisory meetings) in the following 12 months are required in order to reach official 'leader' status.

Here are some minimum expectations of a 4-H leader.

- ⇒ Demonstrate good character, sportsmanship, and integrity.
- ⇒ Enjoy the youth.
- ⇒ Know and follow the rules.
- ⇒ **Participate!**
 - Attend or be represented at advisory committee meetings specific to your project area. (This responsibility can be delegated – but it's in your best interest and your club's to attend)
 - Hold a minimum of 8 meetings a year. (Belonging is an important part of the 4-H program)
 - Plan on being at the fair as much as possible. (We know you have a job, family, etc. AND we know your presence at the fair is an important part of your club's success. This responsibility can be delegated, but it's important.
- ⇒ Educate yourself and/or other leaders (youth/adult) in your club so you have information about record books, presentations, or other events that may or may not be specific to your project area. Attend offered trainings.
- ⇒ Ask questions! Never hesitate to contact your mentor leader, a superintendent, or the office to help answer any questions or to work with you to problem solve, no matter what the issue.
- ⇒ Submit a quarterly calendar.
- ⇒ Meet appropriate deadlines.



New Leader Trainings will be held on the following dates 6:30—8:30 pm at the Extension Office in Redmond:

- Thursday, 9/18/08
- Thursday, 1/22/09
- Tuesday, 3/17/09
- Thursday, 4/9/09

On a similar note...

Mentor Leader Trainings. These are trainings for those volunteers who are mentoring new leaders. You need only attend one. Please try and attend at your earliest convenience. Trainings are held at the Extension Office in Redmond, 6:30—8:00 pm.

- Tuesday, 9/9/08
- Thursday, 2/5/09

It is all too easy to speed through life with our eyes focused only on the road ahead. The challenge is scanning the horizon from time to time to determine where we are headed.

Christopher Gergen and Gregg Vanourek

2008/2009 Advisory Committee Schedule

ALL AREAS: Horse, Dog, Small Animal, Livestock, Natural Resources, & Home Ec/ Expressive Arts

All meetings are Tuesday and begin at 6 pm with a short educational topic, followed by a general session, followed by project area meetings.

| | |
|-------------------|-------------------|
| Tue, Oct 14, 2008 | Tue, May 12, 2009 |
| Tue, Jan 13, 2009 | Tue, Jul 14, 2009 |
| Tue, Mar 10, 2009 | Tue, Sep 8, 2009 |
| | Tue, Oct 13, 2009 |

All clubs are expected to have a representative at their related meeting. Thanks for your participation. ccb

Teen Staff News!!

End of the Year Teen Staff & Family Potluck Picnic!



When: September 13th, noon to 4 pm
Where: McKay Park, Bend
(Below the Colorado bridge)
Who: All Teen Staff members and their families



It's time to kick up our heels and celebrate the end of a great 4-H year!! Bring a potluck dish to share, Frisbees, water toys, footballs, etc. and be prepared to have a lot

of fun! You have all worked hard this year, and you deserve a day off! If last year is any indication, a good time will be had by all! See you on the 13th!



New Teen Staff Applications

This year our applications for new Teen Staff members will be due **OCTOBER 31st!!** This is much sooner than they have been due in the past, so please spread the word!! Also new applicants must have a letter of recommendation from a 4-H leader, teacher, employer or other adult mentor. This is also a new and important part of the Teen Staff application process.

Tina



Teen Staff Happenings!



Happy August Birthdays!!!

Nathan Donahue, Jenna Byrne, Clinton Lytle, Cody Smith, Skyler Laughlin, Sadie Knowles, David La France

Happy September Birthdays!!!

Christy Mosier, McKenzie Bell, McKenzie Gillespie, Kim Shanahan, Kaitlin Smith

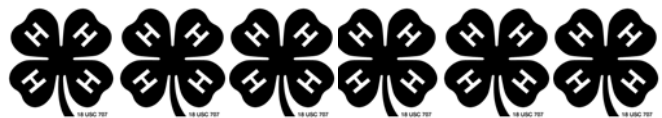
If you, or another Teen Staff member is celebrating a "happening", please let me know!!

Post Fair Thoughts

Well... we made it through another fair! I was once again amazed and astounded by the way the Teen Staff stepped up to the plate! So many times I needed help or coverage in a certain area, and almost always received an enthusiastic response! I can't tell you how much that means to me. Especially with all the new "ventures" we took on this year (RockBand, Tie Dye, OTC Café, etc., etc.)! I learned a lot this year, and I appreciate all the adult volunteers and Teen Staff who helped make this fair a success!

Put on your thinking caps for next year. Write notes about things that could have been done in a more effective way, things that did and didn't work, and any other suggestions you may have.

Thanks so much again to our wonderful Teen Staff! You really are the back bone of Deschutes County 4-H!



Help Needed!

We will be selling tie dye shirts and building and working a children's maze at the Fall Festival, Oct. 4-5 in Bend. Please let me know if you are able to help with this event!

Tina



Tentative Teen Staff Meeting Schedule

Tuesday, November 4th, 2008
Thursday, January 8th, 2009
Monday, March 9th, 2009
Tuesday, May 5th, 2009

Keep your eyes on the newsletter or your e-mail for further details.

Tina

Teen Staff News!!

DESCHUTES COUNTY 2008-09 VOLUNTEER TEEN STAFF APPLICATION

There are many aspects to being on the Teen Staff.

Please consider these requirements & expectations before filling out this application:

*You are in 7th – 12th grade.

NEW You have a letter of recommendation from a 4-H leader. A letter of recommendation will be required for all new Teen Staff members. If they are not a current 4-H member, a letter from a teacher, employer or other adult mentor will be accepted. May be e-mailed to: tina.hohman@oregonstate.edu

*You will be a leader to other 4-H members. Teen Staff members are expected to be examples of what 4-H strives for; to make the best better. It is your job to encourage other 4-H members to be the best they can be by your words and actions, as well as through teaching specific project skills to younger members.

*Planning and working at 4-H events. You are an important part of what makes Deschutes County 4-H successful. I want to have 4-H Teen Staff members take on the responsibility for planning and executing many of our public events, such as Gala, Larkspur Festival, Redmond Coffee Clatter, serving at the Central Oregon Symphony, and other events where you will be 4-H ambassadors while learning leadership skills!

*You will be a part of the Teen Staff “Family”. One of the definitions of family is “*People who share goals and values, have long-term commitments to one another, and reside usually in the same dwelling place.*” I want those who apply to Teen Staff to share the goals and values of 4-H, and to be committed to one another. And while we don’t actually live together, once you’ve spent a week at fair, you’ll feel like we all live “in the same dwelling place”!

*You will be a part of a 4-H Leadership project. This simply means keeping track of what you will learn and experience for your record book. (*There will be no project fee.*)

*You are willing to attend Teen Staff meetings and work at least two 4-H events between now and Sept. 30, 2009.

| | | |
|---|-------------------|--------------------|
| Name _____ | Birth date: _____ | Grade _____ |
| Address _____ | | City/Zip _____ |
| Home Phone: _____ | Cell Phone: _____ | Other: _____ |
| E-Mail (print carefully) _____ | | |
| 4-H Project(s) _____ | | Years in 4-H _____ |
| Parent/Guardian name(s)? _____ | | |
| Parent/Guardian e-mail address? _____ | | |
| T-shirt size: Adult - Sm _____ Med _____ Large _____ XL _____ | | |

Please remove the bottom part of this form and return it to:

Tina Hohman

Deschutes County Extension

3893 SW Airport Way

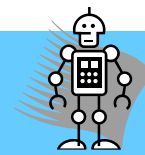
Redmond, OR 97756

Registration Deadline:

****Friday, October 31st, 2008****

4-H BIT

(Business, Information & Technology)



ORTOP WORKSHOP IN BEND



ORTOP will conduct an Extended Workshop for 4-H Leaders, Staff, and Volunteers interested in coaching, mentoring, or helping a FIRST LEGO League team this fall. This all-day workshop covers all three ORTOP workshops in one day. Attendance at this workshop meets the ORTOP scholarship requirement training requirement.

DATE: Saturday, September 13, 2008

TIME: 8:00 am—5:00 pm

WERE: Marshall High School, 1291 NE 5th St
Bend, OR 97701

FOR WHO: Any adult wanting to coach or mentor a FIRST LEGO League team this fall 2008

AGENDA: Introduction to FIRST LEGO League
and LEGO Robotics, Coaching & Mentoring
Techniques and Robotic Techniques

COST: FREE and lunch will be served at no cost to participants

REGISTRATION: Send an email to
Cathy_Swider@ous.edu with your Name, Email, Day
Phone, Evening Phone, and affiliation (4H and
County)

NOTE: This workshop is not listed on the ORTOP webpage. Registration will be open to the 4-H Community first. If any slots remain after 8/20 it will be posted on the webpage to be filled by other interested participants up to 20 slots. Early Registration is encourage!

Other Links you might find helpful.:

[http://www.ortop.org/documents/
news_programflyer2008.pdf](http://www.ortop.org/documents/news_programflyer2008.pdf)

[http://www.ortop.org/documents/
news_howtostartateam.pdf](http://www.ortop.org/documents/news_howtostartateam.pdf)

http://www.ortop.org/documents/res_fllatglance.pdf
Workshop Descriptions: [http://www.ortop.org/
res.htm#des](http://www.ortop.org/res.htm#des)

Workshop Materials: [http://www.ortop.org/
res.htm#mat](http://www.ortop.org/res.htm#mat)

ORTOP FLL Scholarships: [http://www.ortop.org/
res.htm#grant](http://www.ortop.org/res.htm#grant)

Digital Connectors A New Club Start Up

Digital Connectors is a non-profit youth development program facilitated by the Oregon State University Extension Service/4-H Youth Development program in Deschutes County. It is brought to the Central Oregon area by One Economy Corporation. The purpose of the program is to recycle outdated and broken-down computers, refurbish the older computers, and then place them back into the hands of underserved and low income families, and the elderly in the Sisters community. The program will function through the volunteer efforts of local youth interested in technology, as an after school youth development opportunity.

The education and refurbishing program launches Fall of 2008 and will expand to provide low-cost technical support to the community over the coming year.

One Economy Corporation is a global nonprofit that leverages the power of technology and information to connect low-income people the economic mainstream. Originally founded in Washington D.C., One Economy Corporation is a technology based non-profit organization, and the Sisters affiliate is headed up by Todd Williver and Morgan Mansker.

Morgan Mansker is currently a student of Communications at Oregon State University, and Todd Williver has facilitated the Oregon State University Extension Service BIT Mobile project for the past four years.

The partnership between OSU Extension Service/4-H Youth Development program and One Economy share the same community minded goals of serving and educating the community.

High school students, as well as adult leaders, interested in the assembly of computers, as well as enhancing their resume through community work, should contact Morgan Mansker at manskerm@gmail.com

Digital Connectors is also accepting donations of everything computer related, excluding printers. Please contact Morgan Mansker as well.

To learn more about this exciting program please visit <http://digiconn.sixpixelsapart.com>

Noodles, Needles & Stuff

2008-09 Home Ec./Expressive Arts Dates to Add to Your Calendar!!

| | | | |
|------|-------|------------|--|
| Sept | 9 | Tue | Mentor Training (Invitation only) |
| | 18 | Thur | New Leader Training, 6:30 , Extension Office |
| | 23 | Tue | Home Ec/Ex. Arts Committee Meeting 6:00 pm |
| | 27 | Sat | COOKIE CAMP! North Sister, 9-6 |
| Oct | 3 | Fri | Record and scrap books due for record book competition in Extension office by 3 pm |
| | 11 | Sat | 4-H Leader's Forum. |
| | 14 | Tue | Project Advisory Meeting (Home Ec/Ex Arts Committee Meeting) |
| | 16 | Thur | Record book Training 6-8, Extension office |
| | 25-27 | | COSA! |
| Nov | 1 | Sat | Leaders & Members Recognition Night! 6:30 pm, North Sister Building |
| Jan | 2 | Fri | Warm Up America! (Location to be decided) |
| | 13 | Tue | Project Advisory Meeting (Home Ec/Ex Arts Committee Meeting) |
| | 22 | Thur | New Leader Training, 6:30, Extension Office |
| Feb | 5 | Thur | Mentor Training (Invitation only) |
| | 14 | Sat | COOKIE CAMP! North Sister, 9-6 |
| | 21-23 | | COSA! |
| Mar | 10 | Tue | Project Advisory Meeting (Home Ec/Ex Arts Committee Meeting) |
| | 17 | Tue | New Leader Training, 6:30 , Extension Office |
| Apr | 9 | Thur | New Leader Training, 6:30 , Extension Office |
| May | 1 | Fri | Skills Contest, Redmond High |
| | 2 | Sat | Skills Contest, La Pine Middle School |
| | 12 | Tue | Project Advisory Meeting (Home Ec/Ex Arts Committee Meeting) |

Home Ec/ Expressive Arts Committee Meeting September 23rd!!

Where: Extension Office

When: 6:00 pm, Tuesday Sept. 23rd

Why: To plan for the coming year and discuss our post fair thoughts.

Who: *Any leader, member or parent!*

Our next meeting is an important one! We will be discussing both county and state fair, and planning for the year to come. Please plan to attend if you are a leader, member or parent in the Home Ec/Expressive Arts project area!

Topics of discussion:

*County & State Fair

*Cookie Camp (and some other new fundraising opportunities)

*Upcoming events

*Question & Answers for new members/leaders



Home-Ec./Expressive Arts Committee Changes Coming!!!

Starting in October, we will be having all advisory committee meetings on the same night in the N. Sister building. This will help keep the number of nights you have to come out for meetings down, and give all 4-H members/leaders/parents a chance to meet together.

Here is what a Tentative meeting schedule will look like:

6 pm - 6:30 pm ~ an educational component

6:30 - 7:00 pm ~ a general meeting, all areas together

7:00 - 8:00/8:30 pm ~ specific project areas meet.

Noodles, Needles & Stuff

4-H Leader's Forum



This year you don't need to travel far for this great training opportunity for 4-H volunteers! Why? Because we will be hosting one of 4 forums right here in Redmond!

October 11th, for only \$10 you can get 6 hours of training with any one of the following tracks:

1. Focus on Food & Nutrition
2. Get SET for Learning Technology
3. 4-H: Business, Fun, Learning & Leadership!

Plan to get in on this training time! It will count toward the new leader's 4 hrs. of continuing training, and it will be a great boost and refresher for seasoned leaders!

See the registration form in this newsletter.

"I Have What it Takes to be Your Teen Babysitter"

New curriculum available. Contact Tina.



New Art Club!

Do you enjoy drawing, painting or even just doodling? Kelley Salber will be starting a new 4-H art club this fall! Keep an eye on the newsletter for the latest information! I'll update you as soon as plans are finalized!

Cookie Camp Dates



This is a great pre-fair requirement! These dates will all be in the North Sister Building from 9 am to 6 pm.

September 27th

February 14th

Serving at COSA (Central Oregon Symphony)

Here are the dates for the Symphony this year. This is a great activity for your whole club. Call now to reserve your spot to serve at the symphony.



The only requirements are black pants/skirt, a white shirt, and a smile!

Sat, Oct. 25th 7:00 pm

Sun, Oct. 26th 1:30 pm

Mon, Oct. 27th 7:00 pm

Sat, Feb. 21st 7:00 pm

Sun, Feb. 22nd 1:30 pm

Mon, Feb. 23rd 7:00 pm

There may be another Cookie camp and symphony opportunity in the spring. Look for details in your newsletter!

For more information, or to reserve a spot for COSA, contact Tina: 548-6088, ext. 7952
Tina.hohman@oregonstate.edu

Warm Up America!

Does anyone have a large(ish) facility in the Bend area we can use to piece our afghans together on Friday, Jan. 2nd? Please let me know as soon as possible if you have any ideas!

Tina

Sew Cool in School!

You can still get Butterick & McCall's patterns for only .95c each!

But the process has changed!

Go to: http://www.mccallpattern.com/list/sew_cool_in_school/page-1



This is where you can view all the patterns available at the sale price. Browse the collection of patterns and products, and make a note of what you would like to purchase. Then come to a committee meeting and give me your order, along with cash or check (made payable to DCLA) for the total amount of your order. Or you can mail me the information and the check. (3893 SW Airport Way, Redmond, OR 97756) The order will be placed November 14th. *No late orders will be accepted.* I hope you can all take advantage of this great deal!

Tina

Lee Side

(including ATV & Dirt Bike Info)

ATV and Dirt Bike Safety First Campaign

The first ATV safety awareness workshops for the middle schools were a tremendous success. More than 1,200 students participated in 45 minute lessons consisting of Power Point presentations and tour through the Oregon Parks and Recreation Department's ATV and Dirt Bike mobile education trailer.

Students participating in the program interact with presenters from 4-H, OPRD and the Central Oregon Motorcycle and ATV club. Students learned the least the needed to know to be safe while riding the ATV's and dirt bikes on public lands.

The program is being offered throughout the school year. Call Dave at 541-548-6088 if you would like to help deliver this very important program to youth in your community. djw

Are You Under the age of Sixteen and Own an ATV?

Without doubt too many youth are injured in Deschutes County due to a lack of competence related to the recreational use of ATV. ATVs can be a fun and exciting source of motivation to enjoy the great out doors. However, in the wrong hands and the wrong circumstances, ATVs can be dangerous to the health and well-being of some of our community's youngest citizens.

New laws effective January 1, 2009, will require all ATV riders under the age of sixteen to obtain an Oregon Parks and Recreation Department permit to ride on public lands. There is no such requirement for private lands. In addition to the permit, all youth under the age of sixteen before January 1, 2012 will need to pass an ASI RiderCourse.

Thanks to some newly trained 4-H Volunteer RiderCourse Instructors; youth in Deschutes County will be able to receive FREE RiderCourse training. The training is free, but will require participants to pay a non-refundable administrative fee of \$20 to hold a four hour training slot.

With your help, fewer and fewer youth will need medical attention due to preventable injuries and life threatening accidents.

If you have questions regarding up coming RiderCourse training, contact the Extension office at 541-548-6088 or email to david.white@oregonstate.edu.

2008 Natural Resources Meeting Schedule

The Natural Resources Committee meets on the first Tuesday of even numbered months. If you participate in shooting sports, sport fishing, geology, or Outward Bound you are encouraged to participate in these meetings. Meetings are open to parents, leaders, and members. All meetings start at 6:30 p.m. and are located at the Extension office.

Tues, Oct 14

Leaders & Members Recognition Night DATE CHANGED

Recognition night will now be held on Saturday, November 1, 2008 NOT in December. We're hoping for a large turnout! Lots of fun and dinner too—you don't want to miss this event. ccb

Small Animal

Important Small Animal Dates to Remember

2008

| | | |
|-------------|---------------|---------------------------------------|
| Sat | Sep 13 | CO Rabbit Group & 4-H Fall show; DCFE |
| *Mon | Sep 29 | Auction Committee; 6:30 pm |
| Tue | Oct 14 | Small Animal Committee Meeting; 6 pm |

2009

| | | |
|-----|--------|--|
| Tue | Jan 13 | Small Animal Project Meeting, North Sister Bldng, 6 PM |
| Tue | Mar 10 | Small Animal Project Meeting, North Sister Bldng, 6 PM |
| Tue | May 12 | Small Animal Project Meeting, North Sister Bldng, 6 PM |
| Tue | Jul 14 | Small Animal Project Meeting, North Sister Bldng, 6 PM |
| Tue | Sep 8 | Small Animal Project Meeting, North Sister Bldng, 6 PM |
| Tue | Oct 13 | Small Animal Project Meeting, North Sister Bldng, 6 PM |



*Denotes Changed Date

2008/2009 Advisory Committee Schedule

ALL AREAS: Horse, Dog, Small Animal, Livestock, Natural Resources, & Home Ec/Expressive Arts

All meetings are Tuesday and begin at 6 pm with a short educational topic, followed by a general session, followed by project area meetings.

| | |
|-------------------|-------------------|
| Tue, Oct 14, 2008 | Tue, May 12, 2009 |
| Tue, Jan 13, 2009 | Tue, Jul 14, 2009 |
| Tue, Mar 10, 2009 | Tue, Sep 8, 2009 |
| | Tue, Oct 13, 2009 |

All clubs are expected to have a representative at their related meeting. Thanks for your participation. ccb

Fun Opportunity! And, Community Minded Too!

The Central Oregon Humane Society is putting together the Central Oregon Pet Expo.

The event is held at the fairgrounds on October 17 & 18, all proceeds benefit the Central Oregon Humane Societies.

They need our help. Please contact Amy at 815-3406 or Amy@OregonPetexpo.com

Awards Available

Is your club available for the David & Chris Lawrence Sportsmanship Award?

Consider the Bonnie Holtby Memorial Award for a special 4-Her who goes above and beyond to help others and to make our community a better place.

Also, SENIORS, don't forget to sign up for the Merv & Sally Fleming Non-Market Animal Project, College Scholarship.

Find more information in the premium book, available online or contact the office.

Applications for these prestigious awards are due by 5 pm, September 30. Call the office and ask for information or find it online today. ccb

Auction Committee Meeting Date CHANGED

From Sept 22 to **Mon, September 29**, still at 6:30 PM—I'll have dinner waiting. ccb

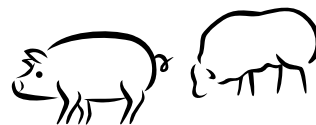


Catch Pen

Important Livestock Dates to Remember

2008

| | | |
|------|--------|--|
| *Mon | Sep 29 | Auction Committee; 6:30 pm |
| Mon | Sep 25 | Livestock Committee Mtg, 6:30 pm; NS |
| Tue | Oct 14 | Livestock Committee Mtg, 6: pm; North Sister Bldng |



2009

| | | |
|-----|--------|---|
| Tue | Jan 13 | Livestock Project Meeting, North Sister Bldng, 6 PM |
| Tue | Mar 10 | Livestock Project Meeting, North Sister Bldng, 6 PM |
| Tue | May 12 | Livestock Project Meeting, North Sister Bldng, 6 PM |
| Tue | Jul 14 | Livestock Project Meeting, North Sister Bldng, 6 PM |
| Tue | Sep 8 | Livestock Project Meeting, North Sister Bldng, 6 PM |
| Tue | Oct 13 | Livestock Project Meeting, North Sister Bldng, 6 PM |



**red denotes changed dates*

Congratulations to the BEEF Sportsmanship Winner

This award is sponsored by David Linton and was created to recognize someone who is always willing to help others, someone who wins and loses well, and someone who is looked up to by their peers as a worth recipient. This award is voted on by the 4-Hers and volunteers in the beef barn. This year's deserving winner is Shelby Pick. Congratulations Shelby and thank you for your exemplary behavior. ccb



Awards Available

Is your club available for the David & Chris Lawrence Sportsmanship Award?

Consider the Bonnie Holtby Memorial Award for a special 4-Her who goes above and beyond to help others and to make our community a better place.

Find more information in the premium book, available online or contact the office.

Applications for these prestigious awards are due by 5 pm, September 30. Call the office and ask for information or find it online today. ccb

Oregon Flock & Fiber Festival September 27 & 28, 2008 Clackamas Co Fairgrounds Canby

For more information:

www.flockandfiberfestival.com

Thank You!

Bob & Shari Marler, Jay & Dawn Morrison, CB Foss, John Stroup, Charleen Lopez, Bernie Becker, Kerri Green, Peggy Crisp and to the MANY who helped these superintendents put on successful shows—THANK YOU! It's only possible because of you. ccb

Auction Committee Meeting Date CHANGED

From Sept 22 to **Mon, September 29**, still at 6:30 PM—I'll have dinner waiting. ccb



These are such a great photos, I had to share. This is Emily Pickering with her new pigs in 2008. Thanks Julee and Emily for sharing!

Classy Camelids & Caprines 4-H Scholarship Program

Classy Camelid & Caprines 4-H group: Scholarship awards Program annually provides \$500, \$400, \$300, \$200, \$100, and \$50 etc., for points accumulated by youth in this 4-H group working with their llamas and alpacas. Call Betty Moe (541-548-4158) or Lesley Hanson (541-548-1670) for more information.

Catch Pen

IMPORTANT!

Short Ethics Workshop

If you were in the pig barn during fair, you NEED to be at this training.

Anyone who exhibited a pig or was involved in any way in the pig project area at this year's fair needs to attend this short workshop. I also welcome other livestock members and their leaders. Leaders, this really is a must attend for you and your club members; please take an hour to come and listen.

Something happened at fair that I don't want anyone to think is OK and we need to talk about it. We will discuss a specific issue as well as the importance of ethics and what it means. Remember, we're always teaching, what we are teaching depends on our actions....Please join me for one hour of good conversation.

Where: North Sister Bldg on the Fairgrounds
When: Tue, Sept 23—6:30 to 7:30 pm
Who: Anyone interested in the quality of our 4-H program

2008/2009 Advisory Committee Schedule

ALL AREAS: Horse, Dog, Small Animal, Livestock, Natural Resources, & Home Ec/ Expressive Arts

All meetings are Tuesday and begin at 6 pm with a short educational topic, followed by a general session, followed by project area meetings.

| | |
|-------------------|-------------------|
| Tue, Oct 14, 2008 | Tue, May 12, 2009 |
| Tue, Jan 13, 2009 | Tue, Jul 14, 2009 |
| Tue, Mar 10, 2009 | Tue, Sep 8, 2009 |
| | Tue, Oct 13, 2009 |

All clubs are expected to have a representative at their related meeting. Thanks for your participation. ccb

Horse'n Around

Horse Calendar ~ 2008

| | | |
|---------|----------|--|
| Sep 11 | Thu | Horse Project Meeting, Extension Office, 6:30 PM |
| Oct 4-5 | Sat -Sun | PNW Western Games, Judges Clinic; Olympia, WA |
| Oct 14 | Tue | Horse Project Meeting, North Sister Bldng, 6 PM |



2009

| | | |
|-------------|-----------|---|
| Jan 13 | Tue | Horse Project Meeting, North Sister Bldng, 6 PM |
| Mar 10 | Tue | Horse Project Meeting, North Sister Bldng, 6 PM |
| May 12 | Tue | Horse Project Meeting, North Sister Bldng, 6 PM |
| May 23 & 24 | Sat & Sun | DCLA Performance & Ranch Horse Show; DCFE |
| Jul 14 | Tue | Horse Project Meeting, North Sister Bldng, 6 PM |
| Sep 8 | Tue | Horse Project Meeting, North Sister Bldng, 6 PM |
| Oct 13 | Tue | Horse Project Meeting, North Sister Bldng, 6 PM |



Congratulations to the Charlie Stiffler Memorial Sportsmanship Award Winner

This award is an honor that continues to recognize young people who give of themselves back to the program, their peers, and their communities. This year is no exception. Katie Linton has graciously given of her time to benefit young people throughout the 4-H horse program. She also is a role-model looked up to and respected by young 4-Hers, her peers and the adults throughout out Deschutes County 4-H. Congratulations Katie, and thank you for your outstanding and exemplary behavior.



Katie is attending Colorado State University this year. ccb

Congratulations to the First Annual Merv & Sally Fleming College Scholarship Award

Congratulations to Emily Pickering who wins this year's \$1,000 college/trade school scholarship. Emily rose to the top of an exceptional field of young people who applied for this scholarship. I was honored to participate in these interviews and it was a terrific reminder of what great kids leave their mark on our program. Emily is no exception. Without a doubt she will succeed at whatever she chooses in life. She's an incredible young lady. Congratulations Emily and remember, you promised to be a future 4-H leader! Ccb



(This is the horse member scholarship, remember, there is another scholarship waiting for your application, that will be awarded in November.)



Criticizing another's garden doesn't keep the weeds out of your own.

Horse'n Around

PNW 4-H

Horse Judges & Interested Others Western Gaming Clinic

A comprehensive training on western gaming for current and prospective 4-H horse judges, leaders and parents.

When: Sat & Sun, October 4-5, 2008
Where: Trails End Arena, Olympia, WA
Fee: \$60 (includes lunch on Sat)

Topics include:

- General Gaming Rules
- Setting up courses
- Tack and Equipment
- Conflict Resolution
- Details on each specific event

Registration materials available at the Extension Office, or at the following website:
http://Oregon.4h.oregonstate.edu/horsejudges/Horse_Judges_Training%20.htm or contact Roberta Lundeberg for more information: 541-737-9295 or roberta.lundeberg@oregonstate.edu



RIM ROCK RIDERS Playdays

Rimrock riders have always been very supportive of 4-H programs. Their playdays are a great place to gain practice and experience for later competitions. Signups are at 8 AM and the games begin at 9 AM. All events are held at Rim Rock Riders arena at Brasada Ranch.

- Jul 12th
- Aug 9th
- Sept 13th

For more information, contact Holly at 771-4837 or Suzy at 389-6008 or hollyRRRsec@bendbroadband.com

Thank You Notes!

Did you win an award at fair? Sell an animal? Receive help from a 4-H leader, family member, or someone else who helped make your 4-H experience special? Then it is time to sit down and write thank you notes.

Not knowing someone's address is NOT an excuse, you can find addresses through our office. It's NOT too late—I don't have mine written either. Let's work on this together, a few each day AND letting someone know how much we appreciate their generosity is very important and it makes us feel good too! Get 'em done! ccb

Thank You!

Just a note to say thank you to the many volunteers who helped at horse fair. Laurie Chatham and Kathy Barrett, you ladies are awesome! Great job. Suzy Page and Cheri Kennedy, another 5-ring circus finished successfully! To Amanda Cyrus & Dennis Gant, thanks for keeping the barn and camping areas in order—No Easy Job, and you guys help everyone feel accommodated! Dixie Brown who keeps track of all the points—WOW and thank you. Also, to the many volunteers who ran gates, clerked, set up dressage arenas and so much more, thank you! Our fair is a great experience to many youth—because of each of you! Thank you. ccb

People are asking about

OHSET dates 2009

- ⇒ Meet #1: **Fri, Feb 13—Sun, Feb 15**
- ⇒ Meet #2: Fri, Mar 27—Sun, Mar 29
- ⇒ Meet #3: Thu, Apr 16—Sat, Apr 18
(awards 4/19)
- ⇒ State: May 14-17, 2009, Central Point



Dog House

2008 Schedule of Events

Wed Sep 3 Dog Committee Meeting, 6:30 pm
 Tue Oct 14 Dog Committee Meeting, 6:00 pm

2009

Tue Jan 13 Dog Committee Meeting, North Sister Bldng, 6 PM
 Tue Mar 10 Dog Committee Meeting, North Sister Bldng, 6 PM
 Tue May 12 Dog Committee Meeting, North Sister Bldng, 6 PM
 Tue Jul 14 Dog Committee Meeting, North Sister Bldng, 6 PM
 Tue Sep 8 Dog Committee Meeting, North Sister Bldng, 6 PM
 Tue Oct 13 Dog Committee Meeting, North Sister Bldng, 6 PM

The real index of civilization is when people are kinder than they need be.

Louis De Bernieres

Fun Opportunity! And, Community Minded Too!

The Central Oregon Humane Society is putting together the Central Oregon Pet Expo.

The event is held at the fairgrounds on October 17 & 18, all proceeds benefit the Central Oregon Humane Societies.

They need our help. Please contact Amy at 815-3406 or Amy@OregonPetexpo.com

Classifieds

AQHA Buckskin Mare, 7 yr old mare. Has done it all! Goes English and western, beautiful conformation, great bloodlines, and is a high point winner. Currently used as a wrangler horse and for show. Has the potential to take you anywhere. Very special horse, will only consider a loving home \$4500. 541-740-7305, Erin

EXTENSION news

Oregon State University
Extension Service • Deschutes County

Non 4-H Extension Staff

Staff Chair

Dana Martin
541/548-6088 x 7957 or
Dana.martin@oregonstate.edu

Other Staff

Stephen Fitzgerald, Silviculture & Wildfire Specialist
 Amy Jo Detweiler, Horticulture Faculty
 Steve Edwards, Horticulture/Forestry Program Assistant
 Glenda Hyde, FCD Faculty & OFNP Program Mgr
 Dana Martin, Central Oregon Small Acreage Faculty
 Gay Demmer, Extension Secretary

Administrative Secretary

Darlene Belden, Administrative
541/548-6088 x 7956 or
Darlene.Belden@oregonstate.edu

EXTENSION calendar

- Making the most of your Small Farm/Small Acreage Workshops—Contact Dana Martin, 548-6088 July 25 ~ Fruit Trees
- Pressure Canning & Smoked Fish, Sep 25—Glenda Hyde, 548-6088
- Flavored Oils/Vinegars/Gift Baskets, Oct 23—Glenda Hyde, 548-6088

Food Safety/Food Preservation Hotline
1-800-354-7310

**Deschutes County
Extension Staff**

3893 SW Airport Way, Redmond, OR 97756
541/548-6088 or Fax: 541/548-8919
<http://extension.oregonstate.edu/deschutes/>

4-H Staff

Dave White, 4-H/Youth Development Faculty
541/548-6088 x 7953 or
David.White@oregonstate.edu

Candi Bothum, 4-H Program Coordinator
541/548-6088 x 7954 or
Candi.Bothum@oregonstate.edu

Tina Hohman, 4-H Program Assistant
541/548-6088 x 7952 or
Tina.Hohman@oregonstate.edu

Houston Chatham, 4-H Program Assistant
541/548-6088 x 7965 or
Houston.Chatham@oregonstate.edu

Sarah Cofer, Central Oregon 4-H BIT
541/548-6088 x 7958 or Sarah.Cofer@oregonstate.edu

Secretarial Staff

Reaza Mansur
541/548-6088 x 7966 or
Reaza.Mansur@oregonstate.edu

Deschutes County 4-H
Leaders Assoc
3893 SW Airport Way
Redmond, OR 97756

NONPROFIT
U.S. POSTAGE
PAID
PERMIT NO. 170
REDMOND OR

Deliver to the family of:

MOVING?

Don't miss a single issue of *Over the Clover*. Fill out the form below and return it to OSU Extension Service, P O Box 1251, Redmond OR 97756 now! If you are a new subscriber, please enclose \$10 payable to DCLA (Deschutes County 4-H Leaders Association).

Name _____

Email _____

Street _____

Phone _____

City _____

State _____ Zip _____



For the Record...

Extension Service, Oregon State University, Corvallis, Scott Reed, Dean & Director. This publication was produced and distributed in furtherance of the Acts of Congress of May 8 and June 30, 1914. Extension work is a cooperative program of Oregon State University, the U.S. Department of Agriculture, and Oregon Counties.

Oregon State University Extension Service offers educational programs, activities, and materials without regard to race, color, religion, sex, sexual orientation, national origin, age, marital status, disability, and disabled veteran or Vietnam era veteran status as required by Title VI of the Civil Rights Act of 1964, Title IX of the Education Amendments of 1972 and Section 504 of the Rehabilitation Act of 1973. Oregon State University Extension Service is an Equal Opportunity Employer.