

Douglas County Weed Tour 2008

Brought to you by...



Yellow Star Thistle: Biology, Impact, and Control

- ✚ Tuesday, June 24, 2008, 8:30 AM – 12:30 PM
- ✚ Location - Ranch south of Roseburg
- ✚ Bring Hat, work boots, and other outdoor wear
- ✚ Refreshments provided by co-sponsors*
- ✚ Re-certification credits pending ODA approval



Agenda

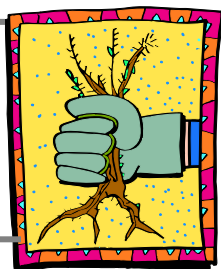
- 8:30 am **Leave from east parking lot (across Fowler St.) of the DC Library in Roseburg (Call to arrange alternate PU points). Travel to tour site.**
- 9:00 – 9:15 am **Resources for Successful Weed Control. Shelby Filley, OSU Extension Service** - Weed ID methods, publications, and people who can help; Douglas County Weed Advisory Board; Noxious Weed Lists; Other educational programs on weeds (Weed Day, Horticulture specific).
- 9:15 – 9:30 am **Cooperative Yellow Star Thistle (YST) Control Programs. Glen Brady, Douglas Soil and Water Conservation District** - Program description and impact of YST on property owners
- 9:30 – 12:00 **Yellow Star Thistle: Biology, Impact, and Control. Ken French, Oregon Dept. of Agriculture, Noxious Weed Program** - Lifecycle, invasiveness, and control of YST (biological, herbicide, grazing, and fire). Inspecting for and capture biological control agents; see a demonstration of ATV mounted sprayer (water demo); evaluate YST spray plots; and discuss impact of fire and grazing.
- 12:00 – 12:30 **Return to town** (library parking lot)

**Co-sponsors: Douglas County Farmers Cooperative
& Helena Chemical Company*

For information contact Shelby Filley at 541-672-4461 or shelby.filley@oregonstate.edu
Call for Reservations for Transportation from Roseburg or other pick-up points

OSU Extension Service of Douglas County
PO Box 1165 Ph: 541-672-4461
Roseburg OR 97470

NON-PROFIT
ORG.
U.S. POSTAGE
PAID
Roseburg OR
Permit No. 12



Douglas County Weed Tour 2008
