

# The Discovery Garden . . .

. . . Is open year round for both self-guided tours and educational tours guided by Master Gardeners. The Garden and Pavilion are used for instruction and demonstrations on various aspects of gardening.

A variety of ecologically sound management practices are displayed, including waterwise (xeric) gardening, mulching, composting, pruning, and recycling.

A detailed compost area with worm bins is used as an outdoor classroom.



For school children and gardeners of any age, this living classroom demonstrates many aspects of home gardening in Douglas County. A playful children's garden with alphabet plants, a sundial and large sculptures encourage children to learn and explore the garden.

The public is invited to our outdoor classes throughout the year. These include hands-on pruning of shrubs, roses, ornamental and fruit trees. The garden is designed to show the benefit of proper irrigation, use of mulch to suppress weeds and control evaporation, and waterwise (xeric) plant selection. We demonstrate use of hedgerows to provide privacy and windbreaks. Our rainwater collection system is a part of our drip irrigation design.

## About the Master Gardeners & OSU Extension Service

The OSU Douglas County Master Gardeners Program is a volunteer organization sponsored by the Oregon State University Extension Service. Master Gardeners are trained in all aspects of home horticulture. Master Gardeners then assist the OSU Extension Service by providing information to the public on topics relating to home gardening.

Established in 1984, the Douglas County Master Gardeners Chapter is a non-profit 501(c)(3) organization that functions to support OSU and the community through educational projects.

The Discovery Garden was established in 1999. The entire garden has been built by volunteer Master Gardeners' labor, work crews from Job Corp and inmate work crews. Supplies and hardscape materials were generously donated by community businesses and funded by the annual Master Gardeners' Plant Sale.

The Discovery Garden gratefully accepts donations of funds or non-cash contributions such as plants, services or materials. Contact 541-672-4461 to make tax deductible donations.

**OSU** Extension Service in Douglas County  
Oregon State University  
1134 SE Douglas Avenue, P. O. Box 1165  
Roseburg, Oregon 97470  
T 541-672-4461 | F 541-672-4453  
<http://extension.oregonstate.edu/douglas>

OSU Extension Service Office Hours:  
8 a.m. - 5 p.m. on Monday thru Friday

Agriculture, 4-H Youth, Family & Community Development, Forestry, and Extension Sea Grant Programs. Oregon State University, United States Department of Agriculture, and Douglas county cooperating. The Extension Service offers its programs and materials equally to all people.

## Discover the Discovery Garden

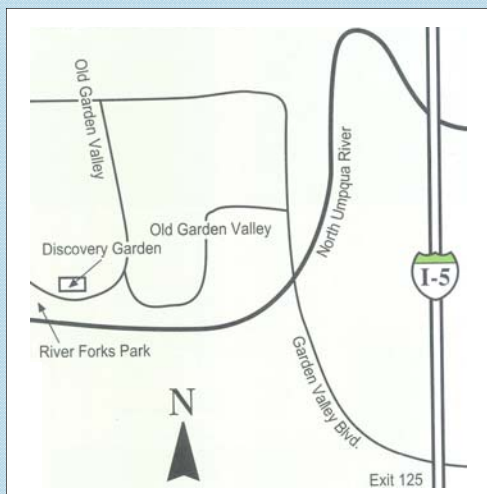


Sponsored by  
OSU Extension Service  
and the  
Douglas County  
Master Gardeners



For information, contact:  
Douglas County  
Master Gardeners  
1134 SE Douglas Ave  
Roseburg, Oregon 97470  
T: 541 672-4461

<http://extension.oregonstate.edu/douglas>

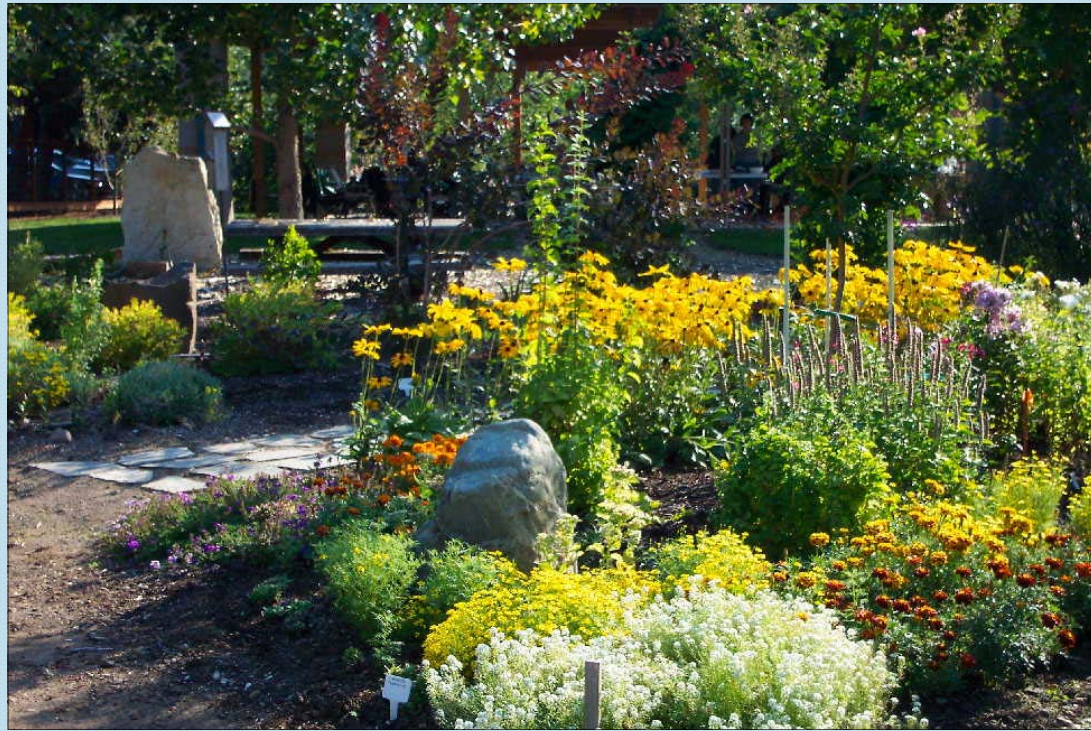


To find The Discovery Garden, go west from I-5, exit 125 on Garden Valley Blvd to Old Garden Valley Road and follow the signs to River Forks Park. The Discovery Garden's entrance is just before the Park's entrance.

# DISCOVERY GARDEN

To interest, inspire, and educate the public.

The Master Gardeners have developed this garden for community use and enjoyment. Our goal is to enhance and preserve the beauty and quality of the environment by using sustainable gardening practices.



Open 7 days a week from dawn to dusk

Please close the gates when entering and exiting

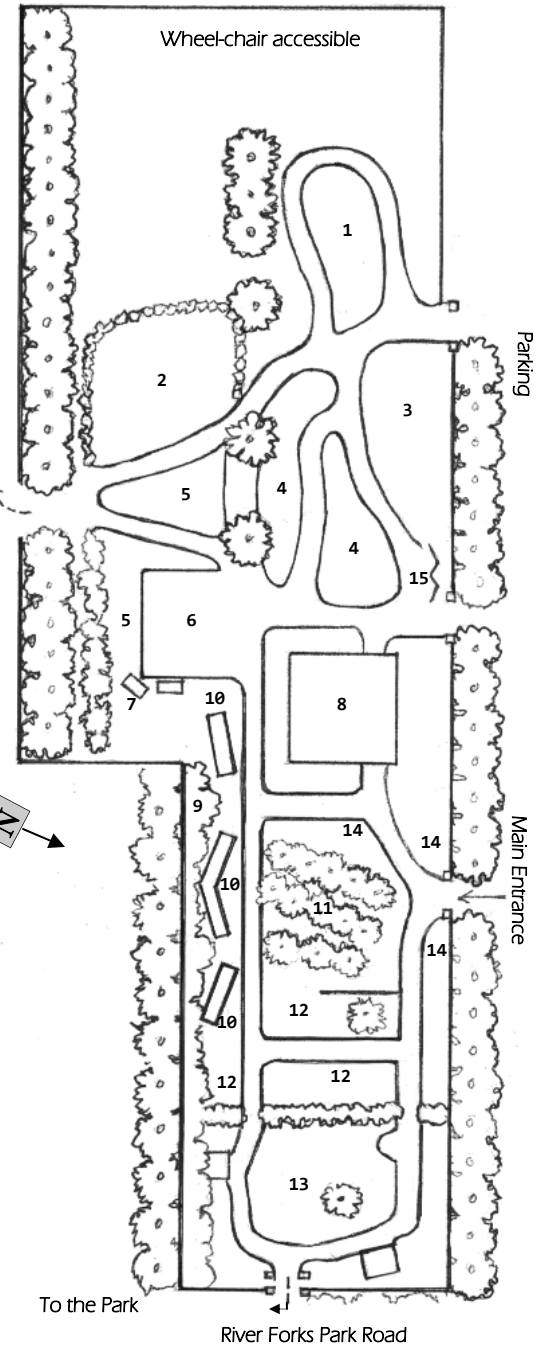
Wheel-chair accessible

For guided tour information, call 541-672-4461.

- ◆ Provides a year-round, educational garden & teaching facility.
- ◆ A garden for the community, for all ages & abilities.
- ◆ A garden to restore & enhance the beauty & quality of the environment.

#### A guide to the Garden's Map:

1. Xeriscape for waterwise gardening
2. Container & Raised Beds. Adaptive garden demonstrating ease of access.
3. Herb Garden
4. Butterfly Garden
5. Ornamental varietals garden
6. Composting demonstration area
7. Worm Bins
8. The Pavilion. A covered open air area for workshops, group functions & educational projects.
9. Hedge Row
10. Lilies, dahlias & day lilies in raised beds
11. Dwarf fruit tree orchard
12. Children's Garden with interactive alphabet garden
13. Japanese Garden & Tea House
14. Formal scented rose entry
15. Donor Recognition Boards



We ask that you please close the gates when entering and exiting to keep the deer out of the garden.



Extension Service  
Agriculture, 4-H Youth, Family & Community Development, Forestry, and Extension Sea Grant Programs. Oregon State University, United States Department of Agriculture, and Douglas county cooperating. The Extension Service offers its programs and materials equally to all people.