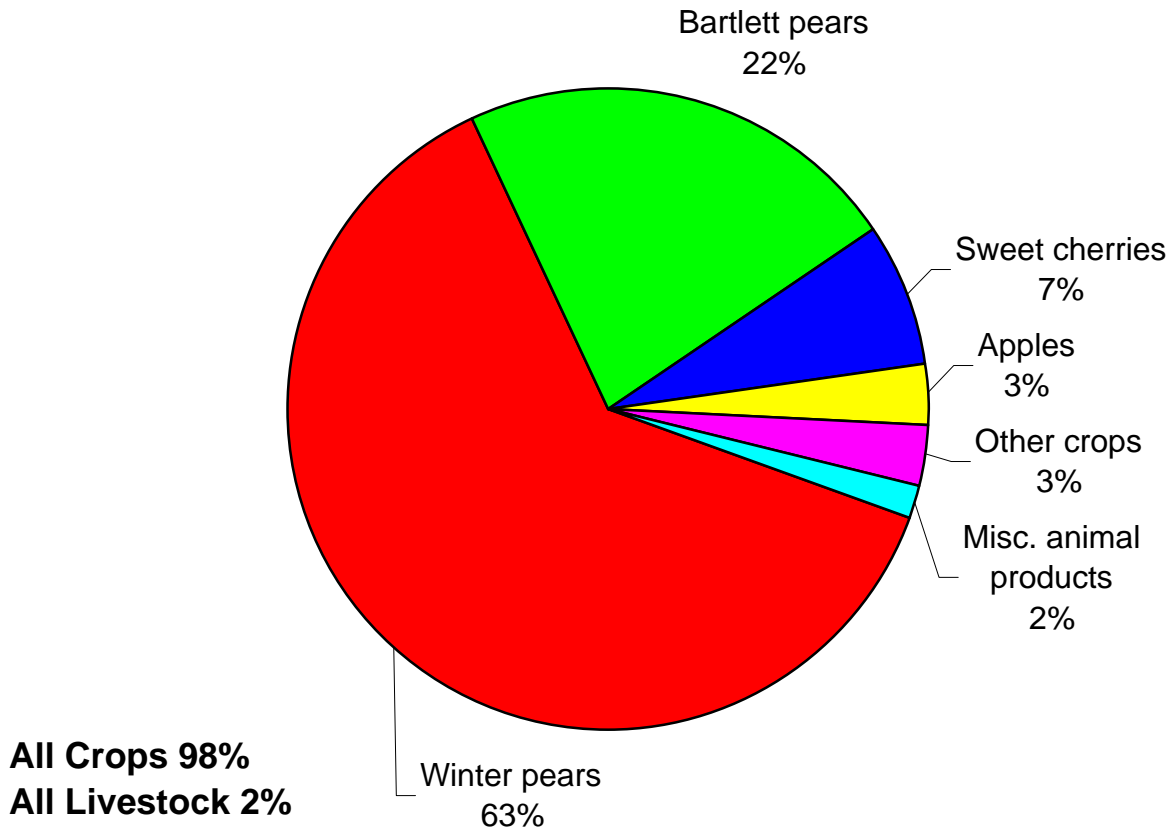


AGRICULTURAL COMMODITY SALES HOOD RIVER COUNTY, 2008p



2008p Sales By Commodity
\$000

Winter pears	46,000
Bartlett pears	16,500
Sweet cherries	5,250
Apples	2,250
Other crops	2,258
ALL CROPS	72,258
Misc. animal products	1,200
ALL LIVESTOCK	1,200
ALL CROPS & LIVESTOCK	73,458

Agricultural Sales by Year
\$ 000

Year	Crops	Livestock	Total
2006r	73,859	1,200	75,059
2007r	76,797	1,200	77,997
2008p	72,258	1,200	73,458

r - revised, p - preliminary

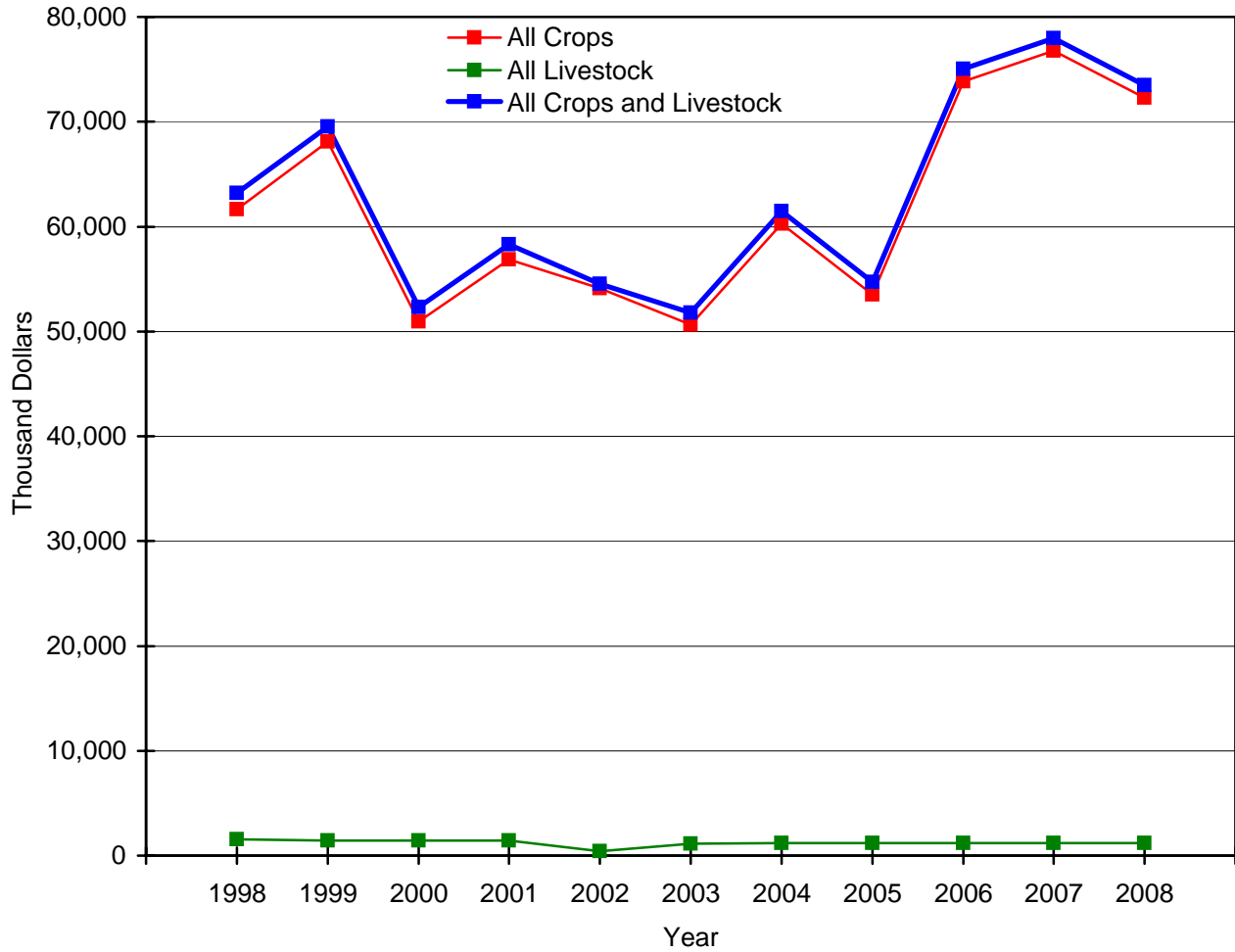
Source: Extension Economic Information Office

Oregon State University

December 23, 2008

Hood River County 1998-2008

Total Gross Farm Sales



Source: Extension Economic Information Office, Oregon State University

December 23, 2008