



The

Garden Gate

Lane County Master Gardeners™

September 2009

President's Message

Marylee is busy enjoying her summer and asked me to do the President's message for September. It has been a busy summer for all of us. I attended the OMGA Mini-college which was an outstanding event. There were some really knowledgeable speakers, several of whom are our own members. Through a concerted effort of the OMGA Board, the volunteers that organized and ran the mini-college, and our own Patty Driscoll, they hit 400 attendees. I encourage you all to try to make one or more days next year. We will remind you when the deadline approaches next spring...

I seem to have spent what time I have at home clearing our winter kill and trying to do the contradictory job of cutting and pulling blackberries with one hand while trying to get other berries to produce, proving the old dictum that "a weed is a plant out of place!"

As President-Elect, and member of the Extension Advisory Council, I would like to take this opportunity to update you all on the Extension budget. As most of you know, federal laws require that Extension be funded by local, state and federal money. If we don't provide local money, the state and federal funding will be limited. Being a county with significant non-taxable federal property and an electorate that is reluctant to pay increased property taxes; the local funding has become a real issue. The county has provided us with a rent-free building the past two years which the state has generously accepted as local funding. The Extension staff and the volunteers have also worked to obtain local funding by increasing fees for services, seeking grants and contracts, and fundraising efforts.

Unfortunately, the state is now also facing dire financial straits and is looking at the Extension Service for savings. We are also uncertain of continued county support as Lane's budget unfolds. Using the successful efforts of Linn and Douglas counties to obtain taxpayer support as a model, a group of Extension supporters is now contemplating an initiative for a local option tax to supplement existing fundraising efforts. These funds would be in direct support of all Extension programs.

If you were unable to attend Extension's community meeting in July and want to join the effort for a local option tax, you can send an email to: teamextension09@gmail.com. Be sure to include your name, address, telephone number and email. If you have an interest in fundraising, volunteer recruitment, community engagement, or publicity, please list your specific area(s) of interest in the email. A volunteer coordinator will help get you in touch with the right people. If

you do not have a preference for any of those areas, you will be classified as a "general volunteer" and will be contacted as specific needs arise.

Another important development is that Extension is planning to conduct a survey in the weeks ahead to learn more about the programming needs of current and potential audiences. This information will be useful to Extension supporters should they choose to move forward with an initiative for a local option tax. In the LCMGA General July meeting (disease diagnostic) the MG members present voted to proceed without the survey. The intent of the members' recommendation was to avoid the cost of the survey and to expedite action on the election. Since then, however, the full rationale and significant funding sources for the survey have been identified. Taking this additional information into account, the LCMGA Board voted to support the survey during our August meeting.

There are still many unknowns surrounding Extension's future in Lane County, but we will keep you informed as we learn more. What is certain is that you can join supporters of a local option tax for Extension and you can do that today. With that, I wish you all a productive fall and hope that your tomatoes ripen!

Your President-Elect,
Tom Kulick



Master Gardener Seminar
September 15, 2009
"Compost Tea"

Join fellow Master Gardeners to hear Lane County Compost Specialists, Michael Alms and Joan Ojerio, share the latest compost tea information & its:

- preparation
- uses
- latest research results

Bring a friend and a snack to share.

Business meeting starts at 7 p.m., program at 7:30 p.m.

Reports

Lane County Master Gardener Board Meeting Highlights

August 10, 2009

Sue Sierralupe, Secretary

Call to Order: The meeting was called to order by President-Elect Tom Kulick at 12:50 a.m.

Present – Tom Kulick, Dorothy Cruickshank, Linda Renslow, Dianne Twete, Jim Giustina, Sue Sierralupe, Catherine Burke, Peter Thurston

Last meeting's minutes were approved and the updated Treasurer's Report for January 1 - July 31 was submitted for review.

Vice President's Report on Fall Festival - Peter has a list of activities that Ross reviewed and approved. They include Winter Garden Demo, Lasagna Garden Demo, Flower Arranging Workshop, Tool Sharpening Demo, Storage of Garden Produce, Fostering Wildlife Workshop, Master Gardener Book Sale, Silent Auction, Herb Workshop, Pruning Workshop, Food for Lane County information, Apple ID workshop (needs a leader), Ask a MG booth, and vendors. Attending these classes counts toward re-certification.

Paying \$5 each for 20 parking spots for the August 18 Seminar so that members can park comfortably was discussed. The Board motioned and seconded approval of funds for these parking places.

Two motions were passed by the membership at the July 21st Diagnostic Clinic. One was to pursue a special county tax measure to support the Extension Service. The other was to skip the survey process and start immediately to organize the placement of a local tax option measure on the county ballot.

Mini-College - The attendance was higher this year than any other. Everything sold at the Silent Auction. The speakers were informative and the food was tasty.

August 22 is the next scheduled Oregon Garden Tour - Dorothy Cruickshank has already bought 15 tickets for this event. Anyone interested in attending this event should contact her directly for a spot on this marvelous adventure.

Oregon Country Fair booth report will be available at September's Board Meeting.

Horticulture Agent - Ross is on vacation until August 24.

Next Seminar: September 15, 2009

Next Board Meeting: September 14, 2009, 12:45 p.m.

Booth Opportunities

Thank you to all the many MGs who have been staffing the many Ask a Master Gardener booths throughout the summer. Lane County Fair week was especially busy for volunteers. Thank you to all who helped staff the MG booth and Compost booths at the Fair. The WOE Fair was staffed in Cottage Grove and many helped with the parking fundraiser that netted over \$4,000 for Extension. Booths are a great way to let the public know what the Extension Service has to offer.

The MGs have been invited to staff an Ask a MG booth at the **Gathering of Gardeners Festival** on September 19-20, Saturday 9 a.m.-5 p.m. and Sunday 10 a.m.-4 p.m. This event will be held at the Village Green Resort, 725 Row River Road in Cottage Grove.

There is a sign up sheet on the MG bulletin board. If you have any questions call the MG booth coordinator Barbara Wallace at 933-3337.

Table of Contents

President's Message.....	1
Reports.....	2
Hort Happenings.....	3
Reports from Our Readers.....	4-5
Visit Pat Patterson's Garden.....	6
Committee Reports.....	7-9
Between the Rows.....	10-11

Meet the Master.....	12
September Calendar	13

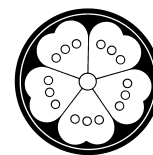
For Garden Tips, newest research and Gleanings go to web site <http://extension.oregonstate.edu/lane/gardens>

User Name: ext_mg

Password: Lmg_01

Oregon State University Extension Service offers educational programs, activities, and materials without discrimination based on race, color, religion, sex, sexual orientation, national origin, age, marital status, disability, or disabled veteran or Vietnam-era status. Oregon State University Extension Service is an Equal Opportunity Employer.

Garden Gate Staff: Linda Renslow, Ellen Lacey, Wendy Gardner and Gail Karlsen editors and typesetters.



Hort Happenings

September 2009

- 3 **Fall Festival Meeting, 2 – 4 p.m. Conference Room**
- 3 **Compost Specialists Meeting, 11:30 a.m. Extension Auditorium**
- 3 Eugene Bonsai Society, 7 p.m. 1645 High St., Eugene
- 8 Hardy Plant Group, 7 p.m. Agate Hall, 1787 Agate St.
- 10 Rhododendron Society, 7 p.m. Celeste Campbell Center, 155 High Street, Eugene
- 12 **Compost Demo 10 a.m. – noon, River House Compost Education site**
- 14 **LCMGA Board Meeting, 12:45 p.m. Extension Conference Room**
- 15 Video Stream Workshop: Stormwater Management 9 – 11:30 a.m. Extension Auditorium
- 15 **LCMGA Business Meeting: Q&A with Staff Chair Steve Dodrill, 7 p.m. followed by MG Seminar “Compost Tea,” Extension Auditorium**

- 15 Eugene Garden Club, 1 p.m. 1645 High St., Eugene
- 16 **Master Food Preserver Workshop “Homemade Condiments,” 5:30 – 8:30 p.m. Auditorium, \$15**
- 17 **Fall Festival Meeting 2 – 4 p.m. Conference Room**
- 19 Fall Fruits and Foliage with Rhoda Love, 10 a.m. – noon, Mt. Pisgah Visitor Center, \$5
- 19-20 Gathering of Gardeners, Village Green Resort
- 22 Audubon Society, 7 p.m. 1645 High St.
- 26 **Compost Demo, 10 a.m.– noon GrassRoots Garden**

October 2009

- 3 **Fall Festival 9 a.m. – 3 p.m. Extension Service**
- 5 NABA presents Butterflies of Mexico 7 p.m. EWEB Meeting Room

Questions to be Answered at September 15 Meeting

In July the LCMGA membership voted to organize the placement of a local tax option measure on the Lane County ballot, rather than first spending time and money on a survey to gauge voter receptivity, as planned by the Extension staff chair. In its August meeting, the board voted to support the survey.

However, the board cannot vote to override the decision of the membership. Therefore, it is asking the membership to reconsider its July decision at the next chapter meeting, to be held on Tuesday, September 15, at 7 p.m. Voting members of the LCMGA include the current year’s trainees, MGs who have paid 2009 LCMGA dues, and all Lifetime Members of the LCMGA.

Currently, there is a lot of confusion about plans, purposes, and timetables affecting the future of the OSU Extension Service in Lane County. Each volunteer needs to be able to make an informed decision regarding the commitment he or she will make individually, and what commitment the LCMGA should make as a group.

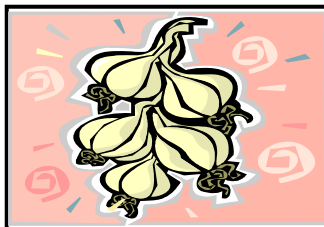
To this end, the board is inviting Steve Dodrill, Extension Staff Chair, to the September 15 Chapter Meeting along with an OSU representative. Individual MGs who so desire may draw up pertinent questions for the chair to address. Please submit your questions to the board president, Marylee Bowman, vortex3@comcast.net, by Tuesday, September 8. These questions will be given to the chair ahead of time to allow thoughtful, clear, and complete answers.

LCMGA members may ask for a copy of the questions from Linda Renslow: linda.renslow@oregonstate.edu or by stopping by the office to pick them up. They will be available by Thursday, September 10. They will also be available at the September 15 meeting.

This may be one of the most important meetings of the LCMGA membership so we can move forward collectively. Please make a special effort to attend.

Thank you.

Wendy Gardner



Garlic Lovers – Take Note!

Anyone interested in putting together a celebration of garlic for the Fall Festival should contact Pat Patterson at 998-6920. Ideas might include presentations on garlic, garlic tasting, and garlic recipes. We would love your input and involvement as well!

We Hear From Our Members

Gardening with Little Ones

John Pierce, MG

No one becomes a Master Gardener without first learning to garden. But how does it start? For me it was my mother and my grandmother. I lived in a three generational home of grandparents, parents, and my brother and me. There was a small vegetable garden in the backyard in addition to flowers and figs. All of these were tended lovingly by my grandmother. I got to help plant seeds, water and pull weeds. This little piece of ground became a special place. It was a “spiritual” kind of space where it was okay to get dirty. I connected to it. It took someone who thrilled to see things grow to plant the seeds of gardening in me. It had an effect on my becoming a Master Gardener, even though that took years to germinate and bloom.

This spring, as we finished the MG course, I happened to attend a meeting of First Place to better acquaint donors with the work Extension does. First Place serves homeless families with a place to shower and wash clothes. They receive counseling in finding work, or going to school, or searching for job training and are aided in finding a place to live. Along with this assistance First Place provides child care for preschoolers while serving them breakfast, a snack, lunch and yet another snack before being picked up by a parent.

As I listened, it dawned on me that these kids are ripe for learning to garden. They can learn as I did. They can experience where food comes from (it doesn't grow in grocery stores or originate in a can), and that the earth provides this bounty when cared for properly. Plus, it's great fun to plant, tend, water, nurture and see things grow.

That's how the project started, this gardening adventure with young ones. After approaching the staff with a proposal that we teach the children to grow and enjoy a garden, they wholeheartedly agreed. There were real possibilities here. I recruited volunteers to construct

raised beds while the staff approached local businesses to provide soil, lumber and supplies. One Saturday morning in early April three raised beds were constructed alongside the playyard by four friends with know-how and a desire to help.

Hence, “Gardener John,” as I was dubbed by the staff, now appears on Wednesday afternoons to herd anywhere from seven to fifteen little ones out to the garden to plan, learn and explore the wonders of seeds, roots, leaves and flowers that seem to appear on plants “magically.” But the most magical lesson for them turned out to be the wonders of compost – that mysterious dark stuff where the most marvelous creatures lived – skinny red worms, sow bugs, snails and slimy slugs that crawl up your arms and between your fingers. Giggles and gales of laughter punctuated their new knowledge of what makes good soil – worm and bug poop!

There was the day the lettuce matured and the children got to present their families with “dinner” they had grown which also included radishes and cucumbers, all from their garden. When the snapdragons and the cosmos bloomed, each child got to pick a favorite flower to give to a special person. Some gave it to their moms, some to their dads, and one to an aide in the day care at First Place. (And did you know that snapdragon flowers make great puppets if you hold them just right to make a mouth that opens and shuts?) Delightful fun!

The whole enterprise was not something I planned, but something by the grace of God I walked into.

I found that Master Gardening can be even more fun if you include kids. Give it a try sometime. It's a terrific way to teach not only the planting of seeds and the stewardship of the land, but to enjoy little kids who are ripe to learn. You can be that role model that plants seeds for gardeners of the future.

Garden Books ... and Magazines!

Nancy Sorensen, MG

Look for our next book sale during the Fall Festival on October 3. Please consider donating those no longer used, duplicate, or outgrown gardening-related, craft, and hobby books, cookbooks, and *recent* (2005-2009 only) magazines.



Books may be left in the “Book Box” in the Master Gardener hotline room, but please call first before donating large (heavy) magazines: 302-5938. (Sorry, we have too many *Sunset* issues.)

We Hear From Our Members

Lessons From the Northeast

Wendy Gardner, MG

The NY Times Op-Ed piece, "You Say Tomato, I Say Agricultural Disaster," printed August 9, 2009, is great reading for all gardeners. The precipitating factor was an "explosion of late blight" in the Northeast this summer.

A few points stand out for me:

- The blight appeared early and the spread was precipitous.
- Organic copper sprays were much less effective this year.
- The blight spread first through many small gardens via starter plants purchased from large retailers with industrial breeding operations in the South.

You can read for yourself the author's reminders that the home gardener is a part of the agricultural web that includes the "tomato plant on the windowsill, the backyard garden, and the industrial tomato farm." You can read his recommendations, which stress to buy starts locally, to encourage a mix of heirlooms with university-developed blight resistant plants, and to "look to a system of food and agriculture which values and mimics natural diversity." (Monocultures) "sacrifice the ecological insurance that comes with diversity."

Now here is what is particularly pertinent to our local chapter, and trends sneaking into the Extension and



Master Gardener programs here in Oregon:

"For all the new growers out there, what's missing is not the inspiration, it's the expertise, the agricultural wisdom, and technical knowledge passed on from generation to generation. Congress recognized the need for this kind of support almost 100 years ago when it passed the Smith-Lever Act, creating a network of cooperative extension services in partnership with land-grant universities...budget cuts have left (the Extension Service) ill equipped to deal with a new generation of farmers. *The emphasis is now on reaching farmers through mass e-mail messages and Web-based dialogues, with less hands-on observation. That's like getting a doctor's check-up over the phone...early detection of any disease requires a number of trained eyes*"

Is this what we want? Closing the OSU Extension Service in Lane County would not only take trained eyes from the county's farms, it would take our trained Master Gardener eyes from the community we serve. It was Master Gardener Hotliners who alerted Ross, who then alerted farmers and gardeners through a media blitz, which averted a similar late tomato blight here in Lane County a few years ago.



Winter Critter Shelters

Nancy Sorensen, MG

As part of the Fall Festival's Wildlife section, we'd like to offer for sale or a workshop, bird houses and bat roosting shelters. We need: (1) untreated wood suitable for birdhouses (old cedar fencing or similar would be great) (and screws), (2) handy folks to cut this wood to size from a pattern, and (3) folks to help assemble the shelters and/or package the pre-cut, pre-drilled pieces for purchaser assembly. If you can help with any of these items or steps, please contact Brian Stoner at 935-8925 or Nancy Sorensen at 302-5938 as soon as possible.



Recipe for Balsamic Figs

Charlotte Barnhart, MG



1. Cut fresh figs in half and soak in enough balsamic vinegar to cover them, along with 1/8-1/4 tsp. rosemary, for 1-2 hours.
2. Place figs cut side up under the broiler and broil until they are bubbly and golden brown.
3. Remove them from the heat and let cool until they are easy to work with.
4. Stuff the figs with a little Gorgonzola cheese and top with a thin slice of prosciutto.
5. Drizzle pomegranate molasses over all. *Yum!*

Come Visit Pat Patterson's Garden!

Mark your calendar for Sunday, September 13, noon to whenever! Potluck and kick back at Bob and Pat Patterson's place at 91735 Poodle Creek Road in Noti.

You will be able to feel superior about your own garden as there is a lot of everything in these gardens, including weeds and some chaos. See the Japanese Garden, the Memorial Garden, the raised bed straw bale garden, the everything-all-mixed-up garden. There are water features and greenhouses also.

I hope many of you can come visit us at our place. It will be a potluck and generally relaxed day. Bring your own utensils (plates, cups etc.). We have plenty of seating unless you have a super-favorite chair. We are all looking forward to seeing you. We usually start about noon and try to eat by 1 p.m. so the food does not spoil. We are located at the intersection of Hwy 36 and Poodle Creek Rd. on the Long Tom River. The phone is 998-6920 in case you get lost despite the map.

My garden, like most, has had a most interesting year with lots of changes. It changes from season to season and year to year as if it were its own designer. Perhaps that is because it has a lazy gardener! Many volunteer plants cheer and surprise each year and this one is no different.

The flowers are waging an all-out turf war with the vegetables and seem to be gaining ground. There

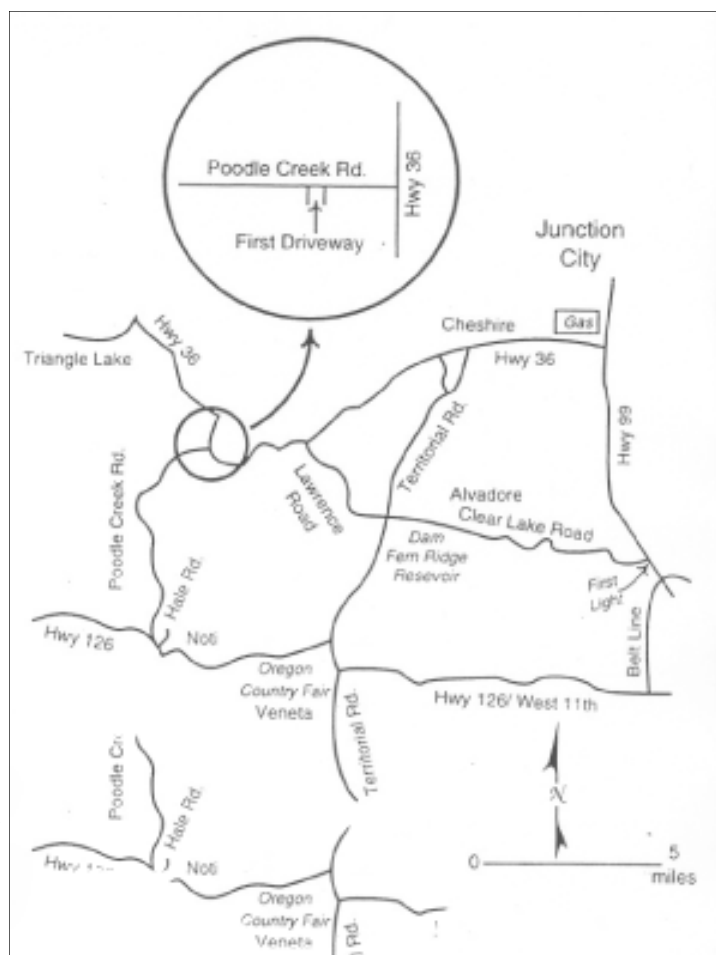
are major areas of renovation in the upper garden, by the house and in the Japanese garden, which is determined to turn into a woodland wild garden. Like life, the place seems always in flux.

Since this is a farm, good sturdy shoes are a good idea – lots to step on or in. If you have children, watch them closely. We have a river at the bottom of the property and a large pond. The livestock areas are off-limits to prevent any possible accidents. The animals are tame, but sometimes a little pushy.

There will be seeds to gather, some cuttings may be made, a few plants are looking for diggers and new homes. We have shade to lounge in and an indoor area if Nature decides to be prankish. Also, you can visit and then go home well

satisfied with your own efforts, as perfection is not even striven for at our place. We'll settle for being able to get through the aisles occasionally.

Looking forward to seeing you!



Volunteer Opportunities



In preparation for the Class of 2009 Awards potluck to be held on Tuesday, October 20 at 6:30 p.m. we would like to remind this year's class that 40 hours of volunteer time are required by October 20 to receive a certificate. The full 60 hours can be finished by next April unless other arrangements are made.

As you can see on the MG hotline calendar on page 13 of this newsletter, fewer volunteers are signing up to take hotline shifts. The MG hotline is open year-round.

Now is a great time to sign up because there are lots of great questions coming in on the telephone and through the front door. The hotline is a great learning opportunity. You also stay in touch with what is going on at the Extension office. Hope to see you soon.

Linda and Ross

Committee Reports (cont.)

Fall Festival Update

Peter Thurston, MG

Listed below are the key points from the August 13 Festival Committee meeting. Master Gardeners can help with the Silent Auction, garlic sales, and distribution of information to the public in September about the October Festival. Please contact me at thurstop@gmail.com or call 688-4664 to assist with the Fall Gardening Festival. A copy of the current Festival schedule can be obtained by email, or at the Extension office when you are on the Hotline. Please let me know if you can help with Festival set up, or on the day of the event.

A bake sale will be added to the Fall Gardening Festival schedule. Ona will coordinate MG bake sale activities with Master Food Preserver food sales, and they will be held near the entrance area to the Festival, at the west end of the building. If it can be arranged, hot cider will be included and a coffee vendor will be invited. There is the possibility of a bicycle-powered smoothie maker that will be added.

Cindy suggested that compost specialist's canopies be used if activities move to the parking lot.

Various workshop presenters will send description of their presentation, including a title and the preferred times for the workshops, and the estimated time of each. Jared from the school garden project will facilitate several activities for kids, such as making a seed ball and providing winter seed starts, and recipes for winter plants, such as kale. Angela, with NW Youth Corps, will work on a bulb

exchange. We also will include garlic sales, if possible.

Cindy described the composting and winter gardening demonstrations that will take place on the east end of the Extension building. There will be on-going presentations on how to compost, lasagna compost, and plant cover crops.

Pat, sitting in for Donna, described the Master Food Preserver activities to include: drying apples, pressure canner testing, pickling demonstration, and other food preservation techniques. MFPs will also have an Ask-A-Master Food Preserver along with the Ask-A-Master-Gardener booth.

Wildlife workshops will focus on bird house construction and pollinator nests (such as mason bees). One of the primary purposes of the workshops is to raise awareness about the Sustainable Landscapes Program.

The silent auction will focus on new groups of donors in arts and services. We will explore how to reach local artists and others at the meeting planned for August 17 at noon. Promotion will include creating a book mark and asking MGs and MFPs to distribute them in September.

The next regular meeting of the Festival Committee will be on September 3 at 2 p.m.



Compost Specialist Committee

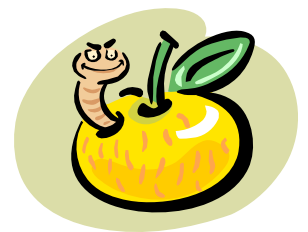
Cindy Wise, MG, CS Program Coordinator

Thanks to everyone who volunteered at the Lane County fair. Attendance was down but the heat wasn't! A special thanks to all those who showed up and shared their expertise despite the weather.

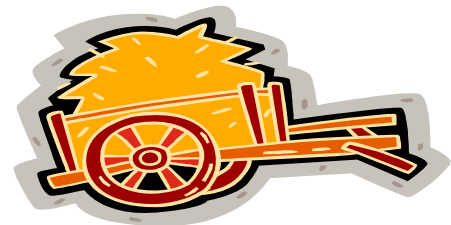
The Compost Specialists composting trial this fall will be coordinated by Joan Ojerio. Trial bins are planned for the rose garden area. Part of the Fall Festival October 3 will be demonstrations of sheet mulch composting.

Thanks to Dave Kayfes for demonstrations of lasagna composting at Nearby Nature's grand opening August 23.

The September meeting will be Thursday, September 3 from 11:30 a.m.-1:30 p.m. The great tomato taste off is scheduled. Bring samples of your tastiest, biggest, most unusual tomato to share. We'll have prizes for the growers of those voted best tasting and biggest by weight.



Committee Reports



Adaptive Gardening Committee

Pat Patterson, MG

Members of the Adaptive Gardening Committee are going to take turns telling you what we do in our own gardens or special tips for Gardening Smarter, Not Harder each month.

I got a chance to really apply what I have learned in this group last year. Because of a nasty disc problem, even my low raised beds were almost impossible for me to manage starting in April 2008. The thought of letting the garden go or having others do all the work was very depressing.

Thanks to the help of David Hoffman, MG, and Patty Ferguson, MG, I was able to continue to garden in a limited manner. They pretty much took over all the bend, stoop and pull work in the main garden, but the winner was developing a garden I could actually work by myself if needed.

Under my guidance they created a straw bale garden from our stored livestock straw. It is an elongated box bed, 2 feet x 30 feet, filled 2/3 with unfinished compost and topped with Earth Rich soil from Lane Forest Products. I was very good at pointing and bossing at this stage of the project. We were ready to plant just about May, so I missed the setbacks the earlier plants suffered that year.

There were no weeds, nice loose soil from the start and a reservoir of nutrients and moisture at the bottom. I could kneel by the bed, drape my upper body over it and easily do planting, fertilizing and petting of the baby plants. The plants responded incredibly. Not only were they warmed from the bottom by the unfinished compost, but the straw bales also decomposed, slowly releasing heat. The beds got smashed down pretty well by the end of harvest, but still had a depth of at least 15”.

I had the best harvest of warm season crops in years from this bed. My first ever 2 pound, 6 ounce tomato and many well over 1 pound, and cucumbers, squash, pumpkins, and peppers in abundance. Interestingly, the cool season crops also did well inter-planted with the warmth lovers. The garden now consists of an L-shaped extension off the original bed and is a joy to work in. I can also work in the regular garden this year. Life is good.

For a renter I could see this as a very good method for an instant garden with no permanent involvement. It is 100 % no-till. Repair is simple. The old bales are tossed on top of the bed and a new bale maneuvered into place. If you wish, this great soil could also be contained by boards, concrete blocks or the like.

Beautification Committee

Extension Beautification...or...Battification?

Wendy Gardner, MG

Hm-m-m. I wonder whether one can ask for double hours for hazard duty?! Gwendolyn Scott was off taking care of her mom in California, so Pat, my husband, and I were in charge of the August Extension Beautification work session. Pat, Tom Cherrytree, JoAnn Napier, Linda Martin, and I were weeding and deadheading when suddenly there was a shriek and a mad commotion coming from one of the middle beds. Linda rose up batting at her head in the midst of a cloud of yellow jackets. I was the closest, so we both went running off down the parking lot with the others looking after us with glazed eyes as though we were junior high girls on the school playground at lunchtime.

Poor Linda. Rather belatedly, I forgot my own panicked need for self-preservation enough to come to her



aid. By then the insect on her head was dead and the rest had subsided, but not before she had gotten two bites on her head and one on her arm. We went inside for water and a bag of ice. I sent Linda home where she had a very bad afternoon, but did finally recover.

The nest? Wrong place at the wrong time. Now eradicated by a brave Pat Gardner. Well, I think it's brave to sneak up on one of those nests. So, if you dare...please join us next time, which will be on Wednesday, September 9, from 9:30 to 11:30 a.m. We want to have everything looking spiffy for the Fall Festival on October 3. In the meantime, check out the two new trellises, both made by Tom Cherrytree. The Recycled Garden Art Committee donated the one at the west end and Tom donated the one at the east. Thank you, Tom.

Committee Reports (cont.)



GrassRoots Garden Committee

Merry Bradley, MG

In the middle of the heat wave, with temperatures in the triple digits, water became a precious commodity at GrassRoots Garden. We had been experiencing low water pressure for several months. Fearing our pump was malfunctioning, we scheduled an expert from Willamette Valley Pump to review the pump operation. It was determined that it wasn't the pump giving the trouble; it was our well. It was running out of water. From Tuesday to Friday, in one hundred degree weather, we scrambled to save our 100 + beds of thirsty vegetables.

Our shallow well had been in use since 2001 when it started drawing from standing water at about 24 ft. below the surface. This July, we found the water pressure greatly diminished and our expert's review indicated that we were only drawing from about 10 ft of water and even that was not always available. The middle of the night was the best time to water, when the Aquifer was at its highest and there was less demand from other city wells that used ground water. During those water-scarce days in late July, Merry Bradley could be found (with flash light in hand) out at the Garden watering at 1:00 a.m.

Things got desperate. Thousands of dollars in crops were at stake. We knew we had to do something and the word went out---thanks to the efforts of FOOD for Lane County staff and Garden volunteers. Soon, aid began to arrive. JTI Supply donated a 5,000 gallon water holding tank and Wildish Companies filled that tank with water daily. Jim Rundall lent us a pump to redirect this water directly into irrigation lines and Mac Williams loaned us a water pressure tank to control the flow. This all helped but only allowed us to water about eight beds before the tank was depleted. St. Thomas Church helped by allowing us to use their city tap water for those beds nearest to

the church.

We did the best we could to shade the young fall crop of vegetable starts that had just been planted and needed shade and plenty of water. In the end, we did lose some crops or their production was diminished. These included losing some tomato plants as well as some flowers in the stone-walled flower cove, and severely water stressing some fruit trees in the orchard. It remains to be seen how some of the fall crops like cabbage, cauliflower and broccoli plants will do heading up after wilting down a couple of times.

After surviving a week and a half of make-shift attempts to keep things watered, Casey James Drilling Co. arrived Friday to dig us a new and deeper well, about 60' away from the old well. It was set to draw water from 95 feet below the surface. The following Monday, Rainbow Plumbing Co. installed a new 1½ horsepower pump, hooked up water lines and electricity to the pump, and installed a more efficient pressure tank. This new well and pump provides us with a generous 33 gallons per minute.

It was a hectic two weeks for the Garden Coordinator and for all those who chipped in to help. ***Now we must find a way to pay for the new well and pump. FOOD for Lane County is planning to hold a fundraiser event in September and October to generate the needed funds. All help is welcomed.***

Summer Garden Hours (Tues. through Sat. 9 a.m. to 2 p.m.) The GrassRoots Garden is located at 1465 Coburg Rd., across from Safeway, behind St. Thomas Episcopal Church. For more information *contact: Merry Bradley at merrybradley@yahoo.com or 484-7144. Thank you for your caring and support!*

September Propagation

Karen Bodner, MG

Divide: *Amelanchier* (Serviceberry), *Gaultheria* (Salal), *Paeonia* (peony), *Raoulia*, *Tiarella* (Foamflower)

Basal Cutting: *Achillea* (yarrow), *Androsace* (rock jasmine), *Artemisia* (wormwood, tarragon), *Geranium*, *Lobelia*, *Verbena*, *Viola*

Bulbs: *Camassia*, *Chionodoxa* (Glory-of-the-Snow), *Crocus*, *Narcissus* (daffodil), *Ranunculus*, *Rhodohypoxis*, *Trillium*, *Tulipa*

Layering: *Arbutus* (Strawberry Tree, Madrone), *Cercidiphyllum* (Katsura tree), *Corylus* (Filbert), *Elaeagnus* (Russian Olive, Silverberry, Goumi), *Fothergilla*, *Kalmia* (Mtn Laurel), *Laurus* (Sweet Bay), *Nyssa* (Tupelo/

SourGum), *Paeonia*, *Pieris*, *Rhododendron*, *Salix* (willow), *Ulmus* (Elm), *Vaccinium* (blueberry, huckleberry), *Viburnum*

Start Seeds: *Acer*, *Allium**, *Anthriscus**, *Astrantia**, *Calendula*, *Camassia*, *Cimicifuga**, *Corydalis**, *Cotinus*, *Daphne**, *Erythronium**(Fawn lily), *Ginkgo*, *Gypsophila*, *Hemerocallis**, *Iris**, *Lewisia**, *Lilium**, *Lonicera* (honeysuckle), *Magnolia**, *Nandina* (Heavenly bamboo), *Ophiopogon/Liriope**, *Papaver* (poppy), *Parthenocissus* (Virginia creeper)*, *Peonia**, *Saponaria* (soapwort), *Skimmia*, *Trollius**, *Viburnum*

* = move to cooler conditions after 6-8 weeks

MGs Between the Rows

Swap and Shop

The Place for Master Gardeners to share, swap, sell, and shop

Roseanna McArthur, MG



Shop

Items for sale at the Extension Office include:

- Badge magnets, \$1.00
- Magnifying lens, only \$11 to properly diagnose insects and diseases.
- T-shirts, long and short sleeved.
- New MG Sweatshirts.

Swap Meet

- **Wanted:** Iris rhizomes (if you have too many and are thinning out). Also looking for seeds or starts of *Salvia Uliginosa* (lost mine last winter). Nancy Sorensen, 302-5938, naturespirit1@hotmail.com.
- **For Sale:** Skylight. Velux, 4' x 4', FS606 Tempered, EDL factory flashing kit for composition shingle roofs, good condition, price of new \$480. Asking \$240. Roseanna McArthur, rmmcarthur97405@yahoo.com.
- **For Sale:** Four burner electric stove, built-in style. Very good condition. \$50. Call Linda at 343-1066.

Submit items via email to rmmcarthur97405@yahoo.com or by mail to Roseanna McArthur, 2640 E. 43rd Ave., Eugene, OR 97405 by 5:00 pm the Friday before the MG meeting (held 3rd Tues).

Extension Participation in Eugene Celebration Parade Cancelled

The OSU Extension Service will not be walking in the Eugene Celebration parade. Not enough people signed up to make an entry viable. Thank you to everyone who did sign up to participate.



Eileen Brixey, MG

Thanks to everyone who volunteered at the Oregon Country Fair this year. The booth was beautiful thanks to Barb Bohn, David Hoffman and Stephen Ramey. This was my first year co-coordinating with Stephen and I learned a lot. It was great to meet all the people I talked to on the phone.

Friday and Saturday were beautiful and gardeners, both local and from far away, stopped by with questions or just to chat gardening. Sunday was an entirely different day. Poor Shirley Eastman came to her first fair. What a trooper she was, talking gardening even as water dumped down from above.

I have a few thoughts and thank yous to share. Marylee, I hope you wear your beautiful clothes next year again. It probably won't rain for another 25 years, but I'll bring extra black plastic bags just in case. Special thanks to Sue Sierralupe and Laura Hoover who were there because "they said they would be." They helped pack things up in very muddy, wet conditions. Thanks to everyone who came. Next year I'll make sure to have clear directions to the Village. For Justin, Morgan and Shirley, thank you for filling in at the last moment. Also, thank you to Lois Inman for wearing two hats at the same time.

Hope to see you all next year, same Community Village.



Planning
for the



MG Class of 2010

Calling all MGs that want to help with the training of the 2010 class of MGs. If you are available to help with interviews in October or Mentoring, please contact Gail Sandgathe at 988-0289 or gsandgathe@clearwire.net. Gigi DeRoin has agreed to set up the interview schedule for the applicants. We are still looking for a more comfortable site in which to hold class. Will keep you posted.

MGs Between the Rows (cont.)

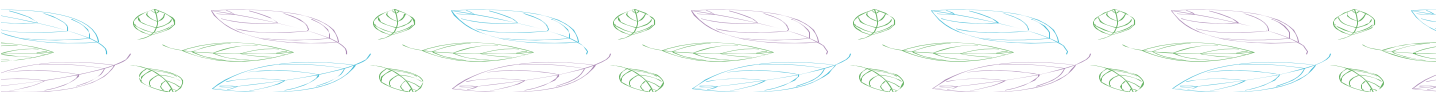
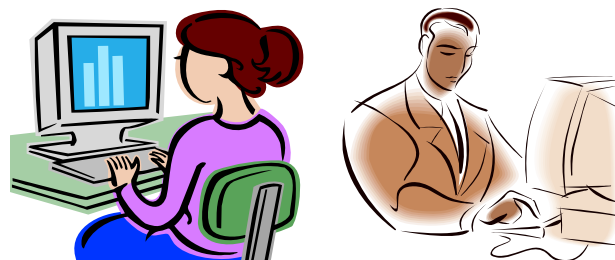
On-line

- The Cooperative Extension System has launched a new website, <http://www.extension.org/>, to complement the various university websites. The site has research-based information on a variety of topics, including Farms, Pest Management and Youth.
- Here is a link to the Invasive Species 101 from Mini College: <http://www.slideshare.net/secret/gKYO5Q6KN9YpmG>
- Mini-College class notes for the "Herbal Teas from Your Backyard to Your Teapot" workshop are now available on-line. Look in the Reference Section under the heading "Workshops and Classes." <http://www.thepracticalherbalist.com>
- On August 9th the *New York Times* published an article called "You Say Tomato, I Say Agricultural Disaster." <http://www.nytimes.com>. See summary p. 5
- This year you can request leaves from the City of Eugene online. Go to <http://www.eugene-or.gov> and type "leaves" into the web site search box. Choose "Public Works maintenance leaf program" then click on "Leaf Delivery Online Form."
- A law passed in 2006 allows Russians to receive land from the government at no charge for gardening. Go to <http://thebovine.wordpress.com/> and search for "Private Garden Plot Act."
- OSU has a website "Finding Help in Tough Times" http://extension.oregonstate.edu/emergency/tough_times.php

- **Online Certificate of Home Horticulture Class**— Registration for the Master Gardener Online basic training course is now open for "Option 1: Online Course Only." Students who successfully complete this course earn a Certificate of Home Horticulture. The online course, which runs from Sept. 7 - Dec. 14, 2009, does not require on-site volunteer hours and can be completed conveniently from your own home.

Please note that space in this online class is limited to 75 individuals, and nearly half of these 75 spots have been filled.

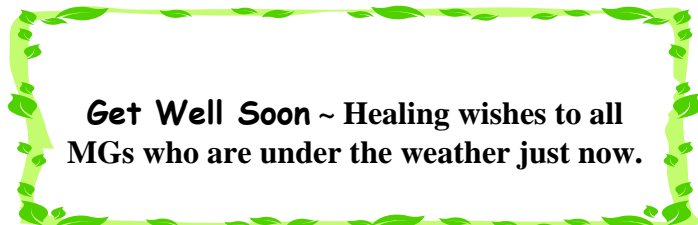
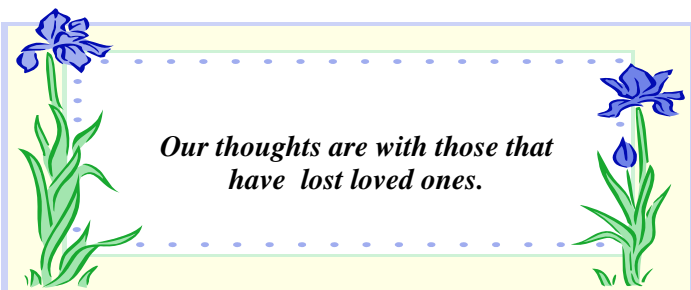
Those interested in earning a Master Gardener badge, will want to explore "Option 2: Online Course and Volunteering." This option includes the online Master Gardener basic training course and will require participants to complete volunteer hours at their local OSU Extension office in order to become a certified OSU Master Gardener. This course will begin in January 2010.



In Sympathy

Our hearts go out to Wendy and Brian Stoner. Wendy's mother passed away.

Our condolences also to Tom Kulick and family. Tom's sister passed on recently.



Meet the Master - Diane Lane

Interview by Sophia McDonald, MG

There is no doubt that Diane Lane is a master gardener. Her yard teems with tall sunflowers, groupings of plants with similar needs for water or sun, and flowers that attract beneficial insects. She dispenses gardening advice generously on a tour of her property. Among them: pay attention to the health of the soil, and avoid spraying by including plants that attract beneficial insects in your garden.

However, to many Master Gardeners, Diane is known for something else: her baking. Her Chocolate-Covered Macarons and Chocolate Toffee Cookies are legendary at the spring Plant Sale. "Every year I see Master Gardeners sneaking back to their cars in the morning, their arms laden with goodies," she says with a smile. She is used to such praise. At the care facility where her mother-in-law lived, Diane was known as "The Pie Lady." Gardening and baking are her two favorite hobbies. She finds both "soothing. They are the two things that sustain me when I'm stressed." When she rebuilt her kitchen several years ago she designed the indoor space to look out on her backyard so she could enjoy both her passions at the same time.

Diane is originally from Douglas County and "basically grew up outdoors." She taught computer application classes at the University of Oregon and Lane Community College until she retired in 1995 to care for her ailing in-laws. She's been a gardener her whole life and frequently used Extension to answer questions and find resources. She took the Master Gardener class in 2003, followed quickly by the Master Food Preserver, Pruning Specialist and Compost Specialist classes. She has taught the plant diagnostic class and the pruning class for the Master Gardener training course, and served as a mentor for new trainees.

Diane currently serves at the Chair of the Pruning Committee. Her duties entail coordinating groups to put together handouts, arranging for volunteers to teach pruning classes, and making sure everyone gets the materials they need. "Being a Pruning Specialist is a good way to keep your yard looking good," she says. "It's also a good way to get yourself outside in the winter."



Each year Pruning Specialists meet in October to organize pruning sessions for the following year. Watch the Garden Gate for training dates.

"I love picking my dinner within the hour before I eat it," Diane says. She grows peppers, tomatoes, lettuce and a variety of other vegetables. Her true passion, though, is ornamentals. Some of her favorite flowers include lilies, *Alstroemerias*, columbines, *Crocosmia*, rhododendrons, and azaleas. She does not recommend the invasive species of butterfly bushes. She planted one in her hummingbird garden a couple years ago. Not only is it monstrously tall, she now has four other bushes in the same area and two in a separate part of the yard.

In her spare time Diane enjoys traveling to new places to scuba dive. She is hoping future trips might include an opportunity to teach people about gardening. She has been an active volunteer in local schools and with the Eugene Celebration, where she served as the parade committee chairperson for many years.

Even when she's not technically volunteering for Extension, Diane is still reaching out to gardeners whenever possible. "I really like passing on whatever knowledge I might have," she says. Diane is currently coaching both next-door neighbors on how to grow vegetable gardens. People interested in becoming Pruning Specialists can look forward to learning about trees, berries and a whole lot more when they work with Diane next year.

September 2009

Sun	Mon	Tue	Wed	Thu	Fri	Sat
	Substitute Hotliners: Cris Zilka 870-0683 Brian Stoner 935-8925 Michele MacDowell 484-5617	1 10 am-1 pm Susan Mincks Cynthia Knight 2-5 pm	2 10 am-1 pm Tanya McNelly Cynthia Knight 2-5 pm Connie Mobley	3 10 am-1 pm Gigi DeRoin Ona Chambers 2-5 pm Mary Leontovich Phyllis Weare	4	5
6	7 Closed Labor Day	8 10 am-1 pm Gigi DeRoin 2-5 pm James Stewart	9 10 am-1 pm Kaye Johns, Laura Hoover 2-5 pm Jennifer Levin	10 10 am-1 pm Gretl Gauthier Tree Knowlton 2-5 pm Mary Leontovich, Tim Foelker, Phyllis Weare, John Pierce	11	12
13	14 10 am-1 pm Gary Parent 2-5 pm Rosana Costello, Nancy Holloman	15 10 am-1 pm Tanya McNelly Cynthia Knight 2-5 pm Sophia McDonald Karen Wilson Susan Mincks	16 10 am-1 pm Laura Hoover Cynthia Knight, B. Dumesnil 2-5 pm Joanne Carlson Kaye Johns, Cindy Ambrose	17 10 am-1 pm Tree Knowlton Ona Chambers 2-5 pm Mary Leontovich Phyllis Weare, Carol Ipsen	18	19
20	21 10 am-1 pm C. Barnhart Gary Parent 2-5 pm James Stewart Rosana Costello	22 10 am-1 pm Gigi DeRoin Gretl Gauthier, Penny Jennings 2-5 pm Carol Ambrose, Chris Murphy	23 10 am-1 pm Steve & Barbara Wallace, Laura Hoover 2-5 pm Connie Mobley	24 10 am-1 pm Tree Knowlton 2-5 pm Mary Leontovich Phyllis Weare, John Pierce	25	26
27	28 10 am-1 pm C. Barnhart Gary Parent 2-5 pm Rosana Costello, Nancy Holloman	29 10 am-1 pm Gigi DeRoin Penny Jennings 2-5 pm Susan Mincks	30 10 am-1 pm Barbara Dumesnil, Laura Hoover 2-5 pm Joanne Carlson, Cindy Ambrose	More Substitute Hotliners: Joanne Carlson 912-2867 Thomas Finney TH 729-6663 Tim Foelker 689-8897 Tommye Martinez 344-7971		

Oregon State University
Lane County Extension Service
950 West 13th Avenue
Eugene, OR 97402-3913

NONPROFIT ORG
US POSTAGE
PAID
EUGENE, OR
PERMIT NO. 426

Return Service Requested


Oregon State
UNIVERSITY

We are pleased to send this material to you as a part of the educational activities of the OSU/Lane County Extension Service Master Gardener™ Program.

Extension Service
Lane County



Ross Penhallegon
Extension Educator, Horticulture



MG Seminar: Compost Tea
Tuesday, September 15, 2009
7-8:30 p.m.

Bring a friend, and snack to share!

We will endeavor to provide public accessibility to services, programs, and activities for people with disabilities. If accommodation is needed to participate at any meeting, please contact the ADA Coordinator at the Lane County office of OSU Extension Service at 682-4243 at least two weeks prior to the scheduled meeting time.