



# CEREAL Newsletter

Vol. MMIX No. 3

[www.cerealcentral.com](http://www.cerealcentral.com)

May 2009

## 2009 Umatilla County Weed and Crop Tour

The 24<sup>th</sup> Annual OSU Umatilla County Extension Service Weed and Crop Tour will take place Thursday, May 21, 2009. The tour will focus on providing a better understanding of different fallow systems and how the system used impacts soil moisture, weeds and soil conservation. Research conducted by various scientists from OSU and WSU will be featured. Different management options such as mulch tillage fallow, reduced tillage fallow with an undercutter and chemical fallow will be presented. Precision weed control using WeedSeeker technology will be presented, along with the impact on weed populations by tillage practices and timing. The effects of peas as a green manure crop will also be presented as a part of the tour.

Anyone interested in local farming practices, soil conservation, and improving the environment through sustainable farming techniques is invited to attend. Participants will meet at 8:00 a.m. in the Umatilla County, OSU Extension Conference Room located at 2411 NW Carden Ave, Umatilla Hall on the BMCC Campus in Pendleton for registration,



*OSU Fallow Systems Research project joins together OSU researchers, OSU Extension and local farmers in on-farm trial. From left to right, researchers, Larry Bennett, and Dan Ball work with growers, Jeff Newton and Bob Newton, to prepare equipment for spring tillage treatments on Newton Farms.*

coffee & refreshments. Tour members will climb on a bus at 8:45 a.m and travel north of Pendleton about 25 miles into the Juniper Canyon area of northern Umatilla County. The tour includes a hosted lunch, and will return to the BMCC Campus about 3 pm. The tour is sponsored by OSU Umatilla County Extension Service, Oregon Wheat

Growers League, Umatilla County Weed Control and Umatilla County Soil and Water Conservation District. RSVP's are requested by Monday, May 18 for the Weed and Crop Tour.

Please call (541) 278-5403 or email Shevon at [shevon.hatcher@oregonstate.edu](mailto:shevon.hatcher@oregonstate.edu) to reserve a place on the tour.

# 2009 Umatilla County Weed and Crop Tour

Thursday, May 21, 2009

8:00-8:45 am Registration and refreshments, OSU Conference Room 100,  
Umatilla Hall, BMCC, Pendleton

8:45 am Depart BMCC campus, Umatilla Hall

9:30-10:00 am Fallow systems comparison study, Newtonson Farms,

- Undercutters and their use in local production practices, Mary Corp, OSU Extension & local growers

10:00-11:45 am Round Robin

- Seed-zone moisture after different summer fallow practices, Stewart Wuest, USDA-ARS
- Soil profile moisture after different summer fallow practices, Mary Corp, OSU Extension
- Fallow weed control with WeedSeeker™ technology, Dan Ball, OSU
- Weed population responses to fallow system, weed impacts to soil moisture, Dilpreet Riar, WSU
- Potential soil compaction layers differences, water content levels, Don Wysocki, OSU

12:00-12:30 pm BBQ lunch, Terjeson Shop, Juniper Canyon

12:30-1:10 pm Weed Identification, Dan Durfey, Umatilla County Weed Control Program

2:00-2:20 pm Green manure trial results, Jim & Sally Duff, Hwy 11, Don Wysocki, OSU

3:00 pm Approximate arrival back at BMCC

2.5 CCA Credits  
available!

Sponsored by:

2 Pesticide  
Recertification  
Credits  
available!

OSU Umatilla County Extension Service

Oregon Wheat Growers League

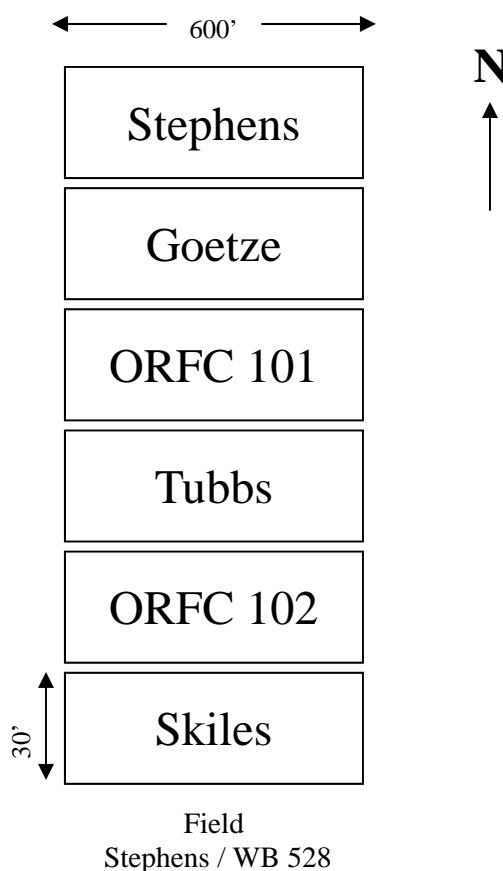
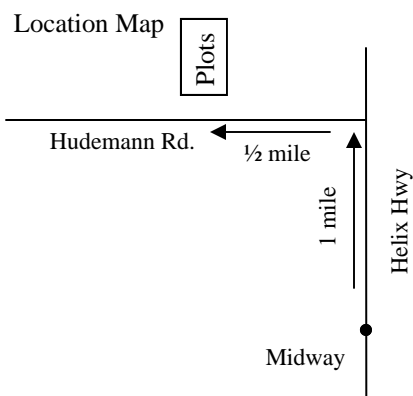
Umatilla County Weed Control

Umatilla County Soil & Water Conservation District

Stop by and visit the 2009 Umatilla County Drill Strip Variety in your local neighborhood.

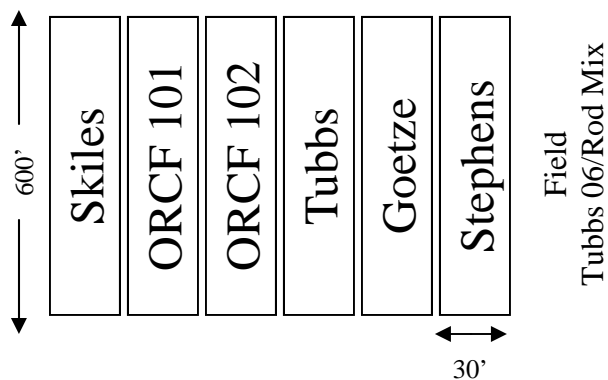
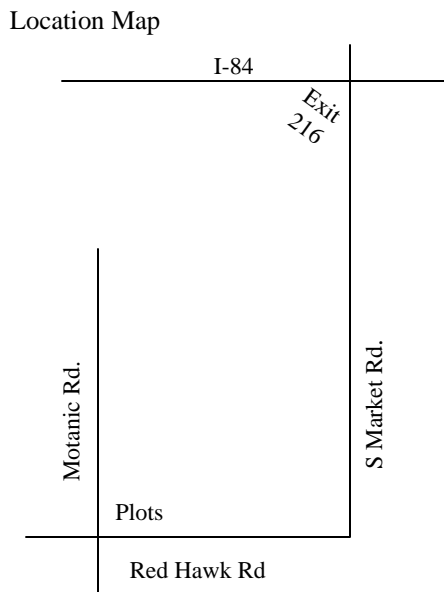
### Mark Hales

- ⇒ Seeding Date - 10/12/08
- ⇒ Case IH Double disk 510
- ⇒ Seeding rate ~ 100#/ac
- ⇒ Seed Depth 2"
- ⇒ Seed Zone Moisture - poor (dry)



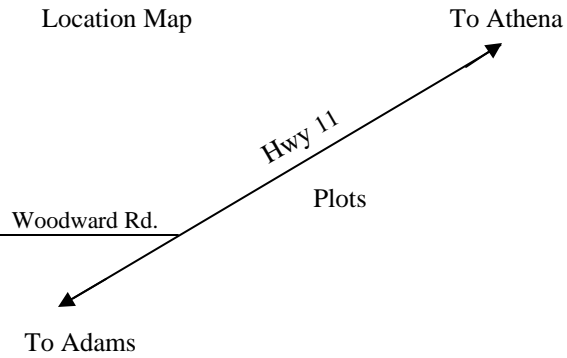
### CTUIR Tribal Farms

- ⇒ Seeding Date - 10/01/08
- ⇒ 3010 Great Plains no-till double disk w/coulter
- ⇒ Seeding Depth 1 1/2"
- ⇒ Seeding Zone Moisture ~ poor (dry)
- ⇒ 2 pass system / chem.-fallow

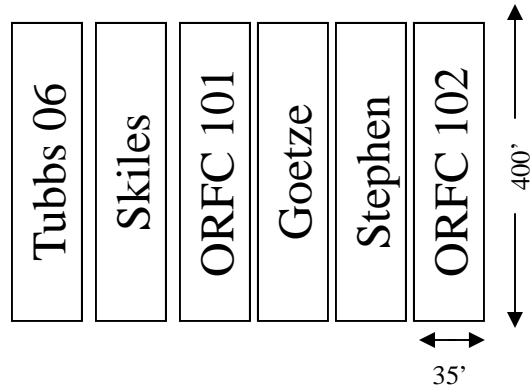


## Jim Straughan

- ⇒ Seeding Date - 10/12/08
- ⇒ JD 1820 No-till drill w/Anderson type opener
- ⇒ Seeding rate ~ 100#/ac
- ⇒ Seeding Depth 2"
- ⇒ Seed Zone Moisture - poor (dry)
- ⇒ "dusted" in plus liquid N + NH<sub>3</sub>

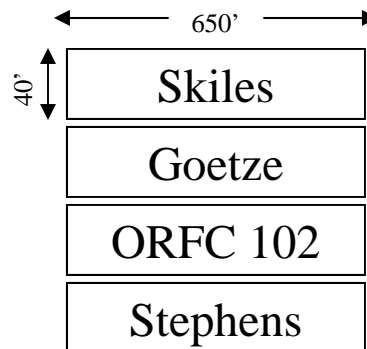
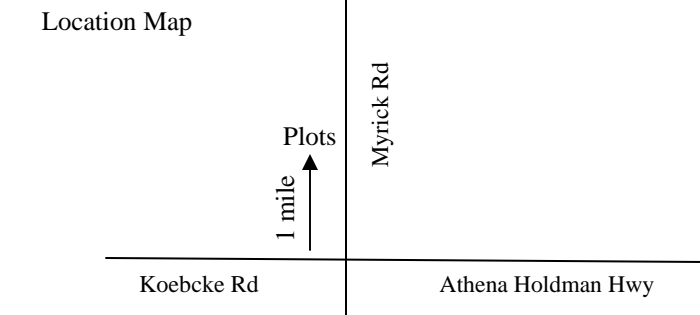


Field  
Stephens/WB 528



## Don Woodard Farms

- ⇒ Seeding Date - 10/20/08
- ⇒ Great Plain Double Disk Drill
- ⇒ 80#/ac Seeding Rate
- ⇒ Seeding Depth 2"
- ⇒ Seed Zone Moisture- poor (dry)



Field - Tubbs 06

## Direct Seed Farm Tour

The Umatilla County Soil and Water Conservation District (SWCD) is planning a FREE tour to John Aeschliman's farm in Colfax, WA. John has been a direct seeder since the mid-1970's and has given presentations in Pendleton at our direct seed breakfast discussion groups and at our annual Sustainable Ag Seminar in December 2007. John has also been involved with the WSU Cook Agronomy Farm and serves on the Advisory Board.

The tentative date is May 29<sup>th</sup>. The SWCD would rent a bus and we would spend the day touring his farm. John has a lot of stories to share of his direct seed successes and pitfalls; this would be a fun, entertaining, and great learning experience for long-time direct seeders and those who are new to no-till farming.

If you are interested in attending or know someone who may be; please contact Heidi Hartman at 541-276-8131 or [nrs@my180.net](mailto:nrs@my180.net). We would like to have a minimum of 25 people to sign-up to make this tour happen, so please RSVP if you would like to go.



## ACRE Analysis Tools Available on Web



Umatilla County USDA FSA held their first workshop, Thursday, May 7, to provide information on the Average Crop Revenue Election (ARCE) Program. They may present another workshop in June, if needed.

The ACRE Program is an option available to producers that is an alternative revenue-based safety net to the price-based safety net that has been available in recent years. The decision to elect ACRE may be made in any of the crop years 2009-2012; however, once the ACRE election is made, it is irrevocable and cannot be changed from the time it is elected through the 2012 crop year. There are several moving parts to the analysis for each individual farm. Listed below are resources available on the web, some are calculators, others are presentations by ag economists at land grant universities.

The University of Illinois has posted a free presentation on the ACRE program. The slide set and recorded voice "lecture" is located at:

<http://www.farmdoc.uiuc.edu/presentations/2009%20items/ACRE-farmdoc/player.html>

Texas A&M has released a calculator for estimating ACRE payments. You will need to scroll down to the bottom of the page and hit the "I agree" button to start the program. The online calculator is located at:

<http://www.afpc.tamu.edu/models/acre/index.php>

Remember, any ACRE calculator is basing results on a 2009 yield forecast and a 2009/10 price forecast (and later years). The A&M calculator gives growers suggested numbers but the user is allowed to enter their own forecast. The University of Illinois also has a free ACRE calculator located at:

<http://www.farmdoc.uiuc.edu/fasttools/index.asp>

The A&M calculator runs on their site so there is no need to download the program. You may have a problem downloading the Illinois model because of your security code setting on your internet browser.

Doing your homework is important for these decisions—so sharpen your pencils...

OSU/Umatilla County Extension Service  
2411 NW Carden, Umatilla Hall, PO Box 100  
Pendleton, OR 97801

-----  
*Address Service Requested*

**NON PROFIT**  
U.S. Postage  
**PAID**  
Pendleton, Oregon  
Permit # 28



Visit us at  
[www.cerealcentral.com](http://www.cerealcentral.com)

## CALENDAR

### May 2009

**May 21 Umatilla County Weed & Crop Tour**  
**Touring:** Helix, Juniper Canyon Area  
  
8:00am Registration ~ Coffee & Donuts  
**Location:** OSU Umatilla County Extension  
**Contact:** Extension 541-278-5403

### June 2009

**June 4 Grass Seed Field Day**  
8:30am Registration  
**Location:** HAREC  
Hermiston, OR  
**Contact:** 541-567-8321

### June 2009 (cont.)

**June 8 Cereal Field Day**  
6:30am **Location:** HAREC  
Hermiston, OR  
**Contact:** 541-567-8321

**June 9 CBARC Field Day**  
**Location:** Pendleton, OR  
**Contact:** 541-278-4186

**June 10 CBARC Field Day**  
**Location:** Moro, OR  
**Contact:** 541-278-4186

**June 30 HAREC 100th Year Celebration**  
**Location:** Hermiston, OR  
**Contact:** 541-567-8321

Oregon State University Extension Service offers education programs, activities, and materials *without regard to race, color, religion, sex, sexual orientation, national origin, age, marital status, disability, and disabled veteran or Vietnam-era veteran status* as required by Title VI of the Civil Rights Act of 1964, Title IX of the Education Amendments of 1972, and Section 504 of the Rehabilitation Act of 1973. Oregon State University Extension Service is an Equal Opportunity Employer.

**OSU**  
Oregon State  
UNIVERSITY