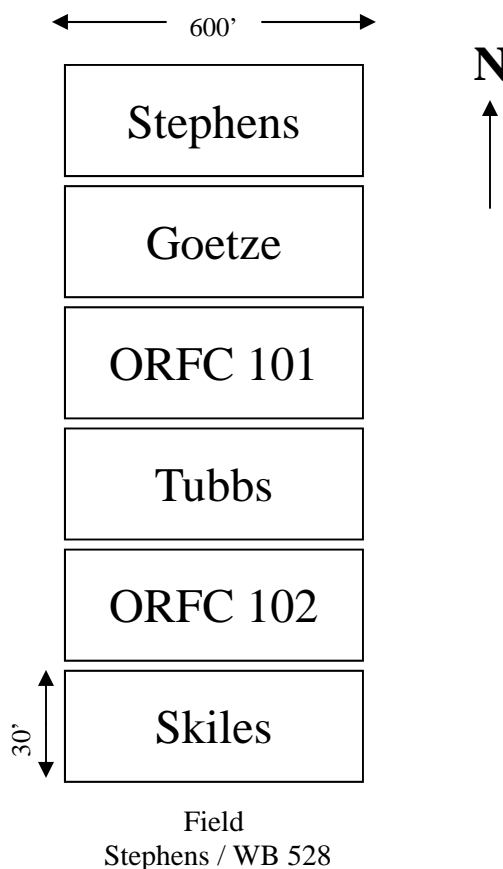
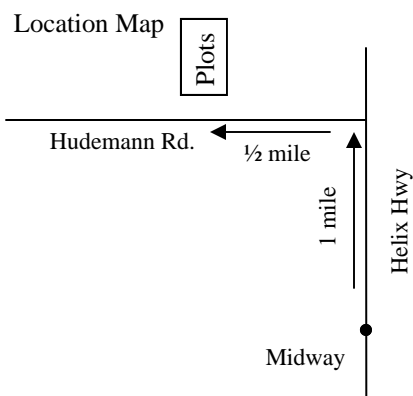


Stop by and visit the 2009 Umatilla County Drill Strip Variety in your local neighborhood.

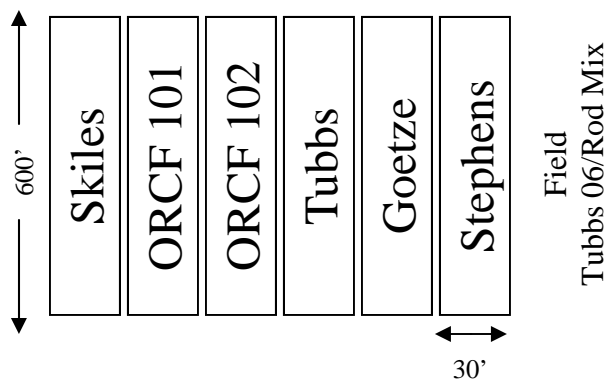
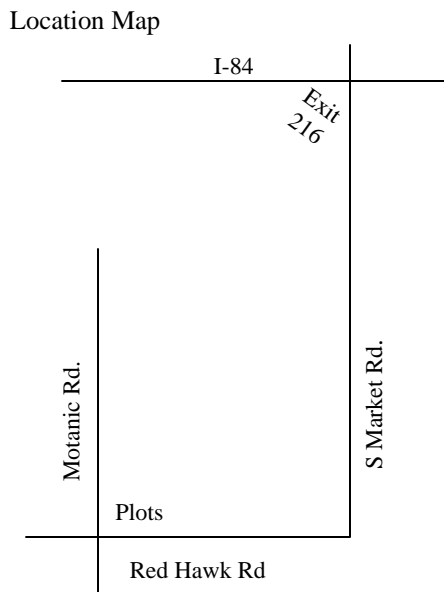
### Mark Hales

- ⇒ Seeding Date - 10/12/08
- ⇒ Case IH Double disk 510
- ⇒ Seeding rate ~ 100#/ac
- ⇒ Seed Depth 2"
- ⇒ Seed Zone Moisture - poor (dry)



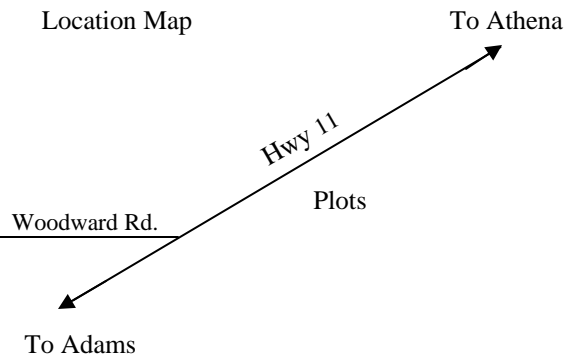
### CTUIR Tribal Farms

- ⇒ Seeding Date - 10/01/08
- ⇒ 3010 Great Plains no-till double disk w/coulter
- ⇒ Seeding Depth 1 1/2"
- ⇒ Seeding Zone Moisture ~ poor (dry)
- ⇒ 2 pass system / chem.-fallow

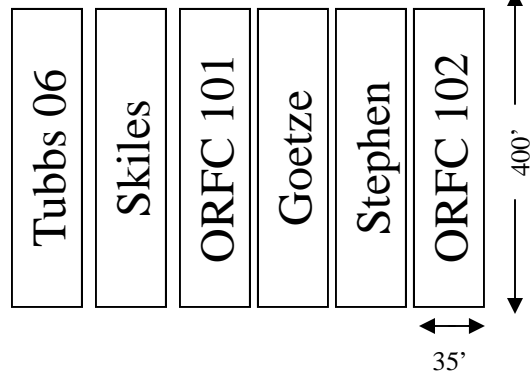


## Jim Straughan

- ⇒ Seeding Date - 10/12/08
- ⇒ JD 1820 No-till drill w/Anderson type opener
- ⇒ Seeding rate ~ 100#/ac
- ⇒ Seeding Depth 2"
- ⇒ Seed Zone Moisture - poor (dry)
- ⇒ "dusted" in plus liquid N + NH<sub>3</sub>

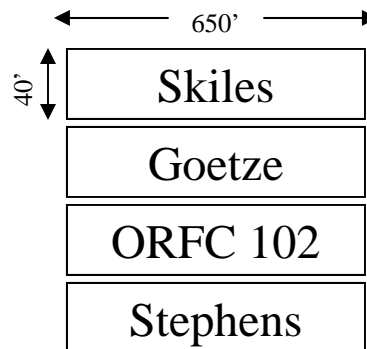
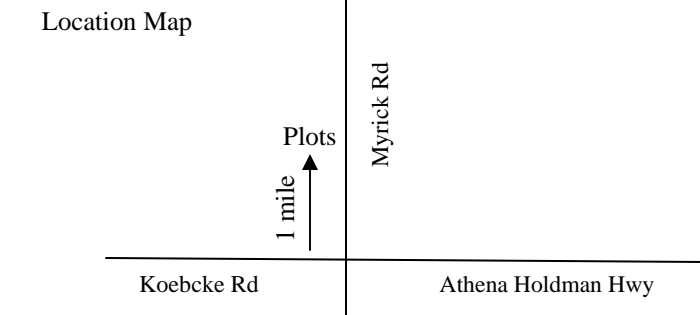


Field  
Stephens/WB 528



## Don Woodard Farms

- ⇒ Seeding Date - 10/20/08
- ⇒ Great Plain Double Disk Drill
- ⇒ 80#/ac Seeding Rate
- ⇒ Seeding Depth 2"
- ⇒ Seed Zone Moisture- poor (dry)



Field - Tubbs 06