

Oregon State University

Umatilla County Extension Service

4-H IN THE SPOTLIGHT

June 2012

TO: 4-H Members & Leaders
FROM: Patricia Dawson, Extension Agent, 4-H & Youth Programs
 Claire Sponseller, Extension Agent, 4-H

CALENDAR OF EVENTS

-----May-----

29 Summer Conference Registration due **5:00 pm** Pendleton 4-H Office
 30 Registrations for June 2nd Record Book Workshop due at **5:00 pm** Pendleton 4-H Office

-----June-----

2 Weigh-in for UCF Swine/Lambs/Goats **8 - 9 am** Pendleton & MF areas local weigh-in locations
 2 Record Book Workshop **10-11:30 am** Pendleton Extension Service Office
 3 Weigh-in for UCF Swine/Lambs/Goats **7 am - 1 pm** Hermiston area UC Fairgrounds
6 am - Finish Athena Area W/M Land Lab
 4-9 Eastern Oregon Livestock Show Union, OR
 8 Registrations for June 12th Record Book Workshops due at **5 pm** Pendleton 4-H Office
 12 Record Book Workshop **1:30-3:30 & 7-8:30 pm** Pendleton Extension Service Office
 14 Registrations for June 16th Record Book Workshop due at **5 pm** Pendleton 4-H Office
 16 NW Jackpot Steer Show **7:00 am** weigh-in Northwest Farm Supply, Hermiston
 16 Record Book Workshop **10-11:30 am** Pendleton Extension Service Office
 25 Registrations for the June 26th Record Book Workshop due at **5 pm** Pendleton 4-H Office
 26 Record Book Workshop **7-8:30 pm** Pendleton Extension Service Office
 27-30 Summer Conference at OSU

-----July-----

2 Entry forms and Record Books for UCF due at 5 pm (M F Office closes at noon) County Wide
4 All County Extension Service Offices are closed in observance of Independence Day
 7 Desert Classic Jackpot Steer & Heifer Show **9 am** weigh-in UC Fairgrounds
 27 Camping Space Registration for UCF due **5 pm** Fairgrounds Office
 28 County Fair Work Party **8 am - noon** Thompson Hall - UC Fairgrounds
 31 Style Revue **7:30 pm** Pendleton Convention Center

-----August-----

1 4-H Dog Show **8:30 am** Registration - 9:00 am Start UC Fairgrounds
 3-4 4-H Horse Show **7:00 am** Registration both days UC Fairgrounds
 5 Receive 4-H entries **3 - 6 pm** Thompson Hall - UC Fairgrounds
 6 Receive all Livestock & Small Animals & Market Animal weigh-in
7 am to noon and 3-8 pm UC Fairgrounds
 7-11 Umatilla County Fair
 11 **8:30 am** 4-H Awards Program **10:00 am** Youth Livestock Auction
 12 **7-10:00 am** Livestock Exhibits released **8-11:00 am** 4-H Exhibits released



Don't forget to friend us on Facebook: Umatilla County 4-H Oregon! We post updates and photos regularly. Stay up to date as our busy spring and summer season pick up!



Farewell Bonnie

Our Milton Freewater Office Assistant, Bonnie Roemer, has recently resigned from her position. We hope to have the position filled as soon as possible; however, we anticipate it will take several weeks to complete the hiring process. We appreciate Bonnie's service to our 4-H program and wish her much success in her endeavors.

Attention!!

Milton Freewater Office Hours Changed!

Due to our recent staff vacancy, the Milton Freewater Office is open to the public on an extremely limited basis. We advise you to call the office in advance at 541-938-5597, before you make a special trip, to confirm that someone will be available to assist you. We will have a staff member present on Monday, July 2nd from 8:30 to Noon to assist with entry forms and collect record books. Entry forms and the fair premium book may be downloaded from the 4-H website.



Record Book Workshops Scheduled

Do you have questions about the content and order for your record book? If so, a record book workshop is for you. It's a great idea to attend a workshop to get your records complete before the July 7th Umatilla County Fair deadline. The record book workshops will be held at the Pendleton Extension office on:

June 2 - 10 - 11:30 am

★Register by 5 pm. on May 30th

June 12 - 1:30 to 3:30 pm & 7 - 8:30 pm

★Register by 5 pm. on June 8

June 16 - 10 - 11:30 am

★Register by 5 pm. June 14

June 26 - 7 - 8:30 pm

★Register by 5 pm. June 25

Please pre-register to guarantee a seat and handouts by calling Patricia at 541-278-5404 or email: patricia.dawson@oregonstate.edu.

Rotating Trophies

If you were the recipient of a rotating trophy at last years' County Fair, those trophies need to be returned to the nearest Extension Office by July 13th. If you have not had your name engraved on it, please do so prior to returning it. Thank you!

4-H Material On-Line!

In addition to being able to pick up 4-H materials from your local OSU Extension Service office, you can now download many directly from the Web. In fact, many materials soon will be available only from the Web. On-line publications are in Adobe Acrobat PDF format.



4-H Support Materials:

<http://oregon.4h.oregonstate.edu/projects>

This is the 4-H state website. This will take you to a page will all projects listed. Click on your project and you will find forms for it and for fairs, too.

4-H Curriculum Materials:

<http://extension.oregonstate.edu/catalog/>

This is the OSU Extension Communications "Publications & Multimedia Catalog" website. Click on "4-H Youth" at the bottom of the page and you will find Leader and Member publications including General 4-H Publications and 4-H Project information by subject.

Umatilla County OSU Extension Website:

<http://extension.oregonstate.edu/umatilla/>

The 4-H Youth Program page includes 4-H enrollment forms, registration forms for various 4-H events, current and back issues of the 4-H Spotlight, upcoming events and a lot more information. 2012 UCF Entry Forms are available on the Umatilla County website under Fairs & Activities: <http://extension.oregonstate.edu/umatilla/fairs-and-activities>.

Please note that we are not able to accept online entries. You must complete the 4-H Fair Entry Sheets and return signed copies with your Record Book on Monday, July 2nd.

Fair Time Reminder

As fair time approaches members, parents, and leaders need to review County Fair & 4-H Program rules and regulations carefully. All too often, disagreements occur at County Fair because someone is unaware of a rule. Please read the premium book, horse show rules, etc., very carefully. Please give Patricia a call if you have a question or need a copy of specific rules.



2012 County Fair Theme Contest



Please help support the 2012 County Fair Theme, "From Wagon Wheels to Ferris Wheels" as your club plans decorations for the barn. 4-H'ers are eligible to

participate in the County Fair theme contest. Members may make a poster or display which uses the theme. Refer to the contest guidelines under 4-H Fair Theme Poster Contest in the County Fair Premium Book. Entries are due in Thompson Hall between 3:00 p.m. and 6:00 p.m. on Sunday, August 5. Special cash awards will be presented to the top three exhibitors—\$15 for 1st place, \$10 for 2nd place and \$5 for 3rd place.

Umatilla County Fair Entry Forms & Record Book Deadlines

All 4-H'ers planning to enter exhibits in the Umatilla County Fair 4-H Division must submit an entry form and up-to-date record book to the Extension Office by close of business on Monday, July 2nd. The Pendleton and Hermiston offices are open from 8 am to noon and 1 pm to 5 pm, the Milton-Freewater office is open on a limited time only due to staff vacancies. Please call ahead of time to make sure the office will have someone available to collect your material. Premium books and entry forms are available at each of our County Extension offices, or you can go to our website: <http://extension.oregonstate.edu/umatilla/fairs-and-activities> and download entry forms and the 4-H portion of the premium book. Entry forms can be filled in your computer, **however, you must print the entry forms, get all necessary signatures, and turn them in with your Record Book. Entry forms cannot be entered on-line.**

4-H Educational Displays Fair Class Updated!

There are new fair classes for Educational Displays. The new fair classes are for Juniors, Intermediates, Seniors and Club Entries. You can find them on page 42 of the Premium Book, just under the Videography section. Please call the 4-H Office at 541-278-5404 if you have any questions.

County Fair Work Party

Plan now to join us **Saturday, July 28**, at the fair grounds to help set-up Thompson Hall and the Livestock Barns. All 4-H'ers, parents, siblings and leaders are encouraged to assist. We will set-up Thompson Hall from **8:00 a.m. to Noon**. Bring buckets, cleaning rags and cleaning products, hammers, shovels, pliers, wheel-barrows, etc. Lunch will be provided at 11:30 a.m. Hope to see you there!



Public Style Show

The public is invited to attend the annual 4-H Style Revue scheduled for Tuesday, July 31, 7:30 p.m., at the Pendleton Convention Center. Admission is \$3.00 per person.



Special Contests For All 4-H'ers

4-H'ers are reminded that the Poster Contest, Presentations, Educational Displays, Banner and Flag Contest, Computer Project Display and Conservation Exhibits at County Fair are open to all 4-H'ers regardless of which project (s) they are enrolled in. Sign up for one of these special contests. They are a lot of fun. Entries are due Sunday, August 5 at Thompson Hall between 3:00 and 6:00 p.m.

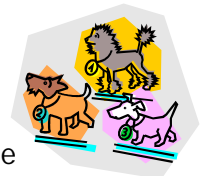
"What 4-H Means to Me"

4-H County Fair Poster Contest

All 4-H'ers are eligible to participate in a special poster contest at County Fair using the theme, "What 4-H Means to Me." Posters must not exceed 22x28 inches for individuals as well as club or team posters. Ribbons will be awarded. Posters may include art work, clippings from magazines or photographs - be creative! Posters are due Sunday, August 5. The Grand Champion poster will also receive a cash award of \$15.00.

Umatilla County Fair Dog Show

The 4-H Dog Show will be held on Wednesday, August 1, at the Umatilla County Fairgrounds. Registration begins at 8:30 a.m. and the show is scheduled to start at 9:00 a.m.





State Horse Classis Results

Congratulations go to the following Intermediate and Senior 4-H Horse club members who represented Umatilla County at the State Horse Classic in Baker City, Oregon, April 27–29. The

Intermediate Horse Bowl Team: Jordan Crane, Emmaline Irvine, Mallory Walters and Stephanie Windham placed 3rd overall. **Senior Horse Bowl Team:** Crystal Mitchell, Shonee Turner and Helen Windham of Umatilla County and Hannah Brandsma of Grant County, placed 4th overall. **Senior Horse Bowl Individual:** Crystal Mitchell placed 3rd.

Intermediate Hippology Team: Jordan Crane, Emmaline Irvine, Tyler Ruth and Mallory Walters, placed 8th overall. **Intermediate Individual Hippology:** Emmaline Irvine placed 15th; Tyler Ruth, 25th; Jordan Crane, 26th; and Mallory Walters, 28th. **Senior Hippology Team:** Crystal Mitchell, Shonee Turner and Helen Windham placed 3rd overall. **Senior Individual Hippology:** Crystal Mitchell placed 3rd, Shonee Turner, 4th; and Helen Windham, 22nd. **Intermediate Horse Judging Team:** Jordan Crane, Emmaline Irvine, Tyler Ruth and Laci Wiggins placed 11th overall.

Intermediate Individual Horse Judging: Laci Wiggins placed 22nd; Jordan Crane, 26th; Tyler Ruth, 40th; and Emmaline Irvine 55th. **Public Speaking:** Emmaline Irvine placed 3rd in the



Intermediate Division, and Crystal Mitchell placed 1st in the Senior Division, plus Crystal will be representing Oregon State at the Eastern National Roundup in Louisville, Kentucky this November. Congratulations, Crystal! Special thanks to Intermediate Coach, Cathy Walters and Senior Coach, Dr. Christine Mitchell. We

couldn't have done this without your help.



2012 UCF Horse Show

The Umatilla County Horse Show will take place at the Umatilla County Fairgrounds on Friday & Saturday, August 3rd & 4th with registration on both days at 7 am; Exhibitor meeting at 7:45 and the show starting at 8 am.

Desert Classic Jackpot Steer & Heifer Show by UCCA

When: Saturday, July 7, 2012
Where: Umatilla County Fairgrounds
Entry Fee: \$25 per head

Steer Show:
Champion Steer \$300
Res. Champ. Steer \$200
Third Place Steer \$100

Heifer Show:
Jackpot will depend on number of entries.
Champion Heifer 50% of Entry Fees
Res. Champ. Heifer 33% of Entry Fees
Third Place Heifer 17% of Entry Fees

Buckles for Champion Showman in each division!

- Junior (4th - 6th grade)
- Intermediate (7th - 9th grade)
- Senior (10th - 12th grade)

Registration deadline is Monday, June 18th. For more information call Marie Linnell at 541-561-6563 or email: mlinnell@charter.net or visit the Umatilla County website: <http://extension.oregonstate.edu/umatilla/cattlemen-association>.

Fair Camping

Limited space for Fair Camping is available with reservations and \$85 fee due July 27 at the Fair Office.



Visit the Fair website: www.co.umatilla.or.us/fair or see Page 88 in the Premium Book for details.

Upcoming 4-H Events

2nd annual 4-H Dog Fun Match, June 12th, starting at 8 am. at the Union County Fairgrounds, La Grande, OR. \$5 per class entry fee or \$4 per class if preregistered by June 10. Contact Stacy Johnson at zina@eoni.com or call 541-437-1701. Open to youth and adults.

4-H Horse Camp, June 20-23, 4-H Center, Salem, OR

\$150 per person entry fee. Registrations available online at <http://extension.oregonstate.edu/deschutes/announcements/4-h-members-horse-camp>.

Congratulations to all 4-H'ers who participated at the 2012 Milton Freewater Junior Show!



Assembling Your 4-H Record Book

Your 4-H Records are to be submitted within an official "My 4-H Records" folder available from the Extension Office. The manila folders are available at no charge while the green hard cover folder is \$2.75. **Other types of binders or folders are not acceptable for entry.** Please organize your 4-H records in the following order:

1. Permanent 4-H Record
2. Divider Tab
3. A. Project Record
B. Breeding and Feed & Growth Forms for that project
C. Advancement Record (Not all projects have advancements)
D. Advancement Certificates for specific project
4. Divider Tab
5. Repeat (A-D above) for each project
6. 4-H Notes (At least one page in length. May combine all project information into one story or diary format. May type if desired.)
7. 2-3 pages of photos per project. (Photos are optional. Should be no older than two years.)
8. Record Placing Sheet for Milton-Freewater Junior Show and County Fair.

Many of the record book forms may be downloaded from the State 4-H website or you may develop your own forms using a computer. Records may be hand-written or typed. 4-H 033R "My Permanent Record" is posted on the State 4-H website at: <http://oregon.4h.oregonstate.edu/general-4h-publications> as an MS Word file that you can use to fill in information using your computer.

On the Umatilla County Extension Service website at: <http://extension.oregonstate.edu/umatilla/4h/forms> you can find a fillable PDF version of "My Permanent Record". You can also find "Assembling Your 4-H Record Book" document on the website.

Please contact Patricia at 541-278-5404 or 1-800-871-1313 if you have any questions regarding assembling of your record book.

Helpful Hints Writing Your 4-H "Notes/Story/Diary"

My 4-H Notes (story) serves as a report or history of all that you have done, achieved, learned and experienced in connection with your 4-H membership for the past year. All of your projects should be combined into one story. Be sure to include if you're a Junior or Teen Leader, on the Teen Council, or Ambassador, these are 4-H projects too.

Be sure to write your story so that the reader remains interested enough to read all of it. The reader not only wants to know what you did or accomplished in the past year, but also how you felt about your experiences.

You should use vocabulary or words that are appropriate for your age and always be sure spelling and grammar are correct. Neatness and readability count, so you may use pencil, pen, typewriter or computer to achieve neatness. The work should always be all yours, no one else's. It is suggested that you include the following categories in your story. They don't have to be in the order listed, in fact, you may want to begin your story with an interesting highlight of the year or even a question to get the reader's attention. Information from the categories may also be woven together, in other words you don't have to have a separate paragraph about each topic listed below.

1 Introduction: Include your age, family, where you live, school, interest, when and why you joined 4-H. Make sure it is interesting and concise.

2. Project/Activity Information: Why project(s) was/were chosen, goals set and attained, how has project grown, successes and failures, profits and losses.

3. Learning: From project itself, leadership, citizenship, cooperation, working with others, offices and committees, etc.

4. Activities: What did you do as a club and as an individual do or accomplish this year? How have you helped or taught others? Be sure to include community service.

5. Personal Growth: How has 4-H helped you become a better leader and citizen? What have you learned about yourself, about making decisions and setting goals, winning and losing, etc.?

6. Future Plans: What do you plan to do next year and beyond? How will you use things learned and experienced in 4-H in other areas of your life?

7. Have a concise (to the point) summary.

8. Have Fun!

Adapted from Karen Lang, 6/94

Source: Dana Martin, Crook County Extension



NW Farm Supply 6th Annual Jackpot Steer Show

When: Saturday, June 16, 2012

Where: Northwest Farm Supply
80411 Hwy 395 N, Hermiston, OR 97838

Schedule:

7:00 - 9:00 am. Weigh-in

9:00 am. Conformation followed by Showmanship
Senior Showmanship followed by Junior and
"Rookies".

Entry fee: \$25 per steer before June 1, \$50 after.
For more information please call Nathan Crowler at
541-567-5650.

Soremouth Disease: What is it and how do I treat it?

Also called contagious ecthyma and orf, soremouth is a highly contagious disease that is caused by a virus which can survive in the environment for an undetermined number of years. The disease is introduced into a clean flock by contact with infected sheep. Infected carriers may not show clinical signs of infection. This disease is zoonotic, meaning it can be passed to humans. Soremouth begins with the formation of vesicles, which become pustules and then scabs on the lips, inside the mouth, on the nostrils, eyelids, and on the feet. The lesions may become fairly large having the appearance of a growth. Ewes may have similar lesions on the teats and udder. An outbreak of soremouth should be dealt with immediately. Vaccinate all sheep, including those with soremouth as soon as possible. Severe lesions can and should be treated topically, please check with your veterinarian for treatment methods. Severely affected sheep are reluctant to eat and therefore should be given soft, palatable, nutritious feed. DO NOT vaccinate a flock of sheep until the disease has occurred in the flock. The vaccine contains live, virulent virus that can start the disease in a clean flock. Vaccinate all sheep at the beginning of an outbreak. *From A Practical Guide to Sheep Disease Management by Norman Gates, DVM, MPH.*

Animal Health Care Reminders

Check and follow all drug withdrawal requirements for all products you use with your animals; Make sure everything you administered is properly recorded on the Market Animal Health Form; Monitor and control parasites; this includes lice, fleas, worms, etc.

Attention Livestock Exhibitors

Weigh times at fair have changed - Scale will be open Monday, August 6, 7:00 am to Noon and 3:00 to 8:00 p.m. Scales will be **closed** from Noon - 3 p.m. **★C.O.O.L. and Clean Animal Health forms must** be turned in at the Umatilla County Fair weigh-in on August 6, **PRIOR TO UNLOADING YOUR ANIMAL.** Be sure your form was signed by the person you purchased your animal from. **No animals will be weighed without these forms.**

★Market lambs and goats will not be allowed across the scales without a SCRAPIE tag/and or tattoo.

★All lambs must be slick shorn prior to weigh-in.

★All Animals must be cleaned prior to arrival.

Dirty animals will not be weighed.

★Ear tags must be clean and readable. If you can't read it, we can't read it!

If you have questions about these forms, contact Claire Sponseller at 541-278-5404. Forms are available at the OSU Extension offices as well as the OSU Umatilla County Extension website: extension.oregonstate.edu/umatilla/4h/forms.

UCF Donation Animal

The Umatilla County Fair Sale Committee is looking for a club or individual who might be willing to donate an animal to the UCF Auction. This donation will be used to help the committee in many different ways. In the past they used funds for a hog watering system, curbing in the sheep and beef barn, panels and concrete in the beef barn, improvements to the scale area and the new misting system in Rankin Pavilion and the hog barn. Please contact Marie Linnell at 541-561-6563 if you are interested.

PJS Sheep/Swine Weigh-In

Pendleton Junior Show Sheep/Swine weigh-in will be on Saturday, July 14, 2012. To be eligible for the Pendleton Junior Show exhibitors **MUST** bring their livestock to the designated weigh-in location at the designated time to be officially tagged. Entry forms for the show are due August 31. Forms can be downloaded from the website: <http://extension.oregonstate.edu/umatilla/fairs-and-activities>. Scroll down to the Pendleton Junior Show information.



2012 - 2013
Umatilla County 4-H
Ambassador Application
Due Friday, June 15, 2012

Name _____

Address _____

Home Phone Number _____ Cell Number _____

4-H Age (as of Jan. 2, 2012) _____ Grade for 2012-13 _____

E-mail Address _____

Parent/Guardian Name (s) _____

4-H Club _____

Number of years in 4-H _____ Year in School _____ T-Shirt Size _____

School Attending _____

To become an Ambassador:

1. You must be an active Umatilla County 4-H member is who in grade 7 or above.
 2. You must be interested in learning more about 4-H and promoting 4-H.
 3. You must represent 4-H in an appropriate manner or attire.
 4. You must sign the Ambassador Agreement once you have attended the training.
- By becoming a Umatilla County 4-H Ambassador, you will be helping to spread the news about all the cool things 4-H can do for other young people like you!
 - You become a messenger of 4-H Goodwill!
 - You represent 4-H at community, county, state and club events!
 - **Requirements:**
 - Participate in one (1) County Event
 - Participate in one (1) Countywide Community Service Project
 - Assist one (1) County 4-H Ambassador with his/her workshop
 - Attend a 4-H Ambassador Training.



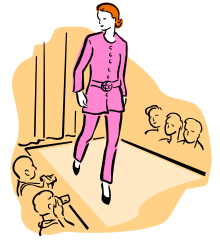
4-H County Style Revue

The 4-H Style Revue will be held Tuesday, July 31, at the Pendleton Convention Center. **The daytime judging schedule is to be announced.** The public evening show begins at 7:30 p.m. All clothing and needlework members may participate in this event.

This event is not funded by County Fair. We will be responsible for all expenses for the event, including: judge's salaries, ribbons, premiums and site rental. As a result, \$3 admission will be charged at the door and we are seeking donors to assist with the event. Please contact Patricia if you would be willing to assist or help sponsor the event.

Yes, I would like to assist with the 2012 4-H Style Revue.

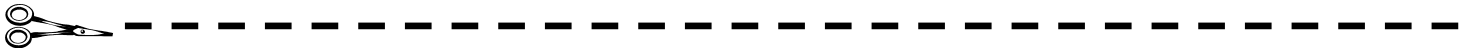
- _____ I can assist in writing narrations
- _____ I would like to be a narrator (must be in grades 8-12)
- _____ I can help stuff ribbon envelopes
- _____ I can help with stage decorations
- _____ I can assist at the check-in desk
- _____ I would like to contribute financial assistance. Enclosed is my donation of \$_____.



(Sponsors will be listed in the Style Revue Program and on the Donor Board at County Fair.)

Name _____ Address _____

Phone _____ E-mail _____



4-H County Fair Help Needed

We are seeking volunteers to serve as Superintendents for the following areas at County Fair: Building Set-up, Historic Displays, Flower Arrangement Contest.

We need several people to help check-in exhibits on Sunday afternoon, August 5. We'll also need assistance in displaying 4-H project exhibits on Monday afternoon, August 6, in Thompson Hall. These positions are open to parents, 4-H members and leaders that are willing to donate a few hours of assistance. Contact Patricia for information about any of the positions listed above. Please sign up today! We need your assistance if fair is to be a success!

Yes, I would like to help at County Fair by doing the following:

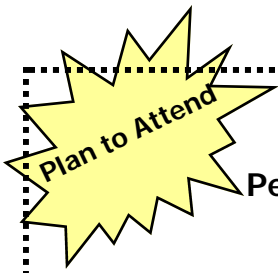
- _____ Help with check-in of exhibits on Sunday, August 5, from 3:00 - 6:00 p.m.
- _____ Set up exhibits on Monday, August 6.
- _____ Assist in displaying clothing exhibits on Monday August 6 from 1:00 - 5:00 p.m.
- _____ Serve as a Superintendent for the following area:

_____ Building Set-up _____ Miscellaneous Exhibits _____ Flower Arrangement Contest (One Day)

Name _____ Address _____

Phone _____ E-Mail _____

Please return to Patricia Dawson, 4-H Department, PO Box 100, Pendleton, OR 97801
or fax to: 541-278-5436, or email: Patricia.dawson@oregonstate.edu



4-H Home Economics Pre-Fair Clinic

July 12, 2012, from 10:00 am. - 2:15 pm.

Pendleton Extension Office - BMCC—Umatilla Hall - Room 100

Open to 4-H'ers, Leaders, Parents

Are you wondering what the judge will be looking for at County Fair? Would you like to get a few pointers to help prepare for a Home Ec. Contest and have some practice time in your contest area? If so, plan to join us July 12, for a day dedicated to 4-H Home Economics project areas. Please register for the classes you will attend so adequate supplies will be available.



Name: _____ Phone: _____

Years in Foods : _____ Year in Sewing: _____

Please register me for the following classes: (Place an **X** in classes you will attend)

- Measuring Skills Basics 10:00 - 10:30 a.m.** Learn about the Measuring Skills Contest. Practice your techniques ~ Learn what the Judge will be expecting
 - Food Preparation Contest Guidelines 10:30 - 11:30 a.m.** Tips to prepare for the contest. • Recipe ideas • What to take to the event • How to prepare. Observe a contest in action.
 - Table Setting Contest Guidelines 11:30 - 12:30 p.m.** Learn about contest guidelines. Examine appropriate table settings, Napkin Folding techniques, and more!
- Lunch** - 12:30 - 1:00 p.m. Please bring a sack lunch.
- Fashion Revue Contest Practice 1:00 - 2:15 p.m.** Learn Basic Modeling Format
• What to expect at the Contest • Practice Proper Turns and Modeling Techniques.

Mail, Fax or Email by July 2, 2012 Attention: Patricia Dawson, 4-H Department
PO Box 100, Umatilla Hall Room 100
Pendleton, OR 97801

Patricia.dawson@oregonstate.edu Phone: 541-278-5404 Fax: 541-278-5436

OSU/Umatilla County
Extension Service
2411 NW Carden
Umatilla Hall, Room 100
PO Box 100
Pendleton, OR 97801

PRESORTED STANDARD
U.S. POSTAGE
PAID
Pendleton, Oregon
Permit #28

Address Service Requested



Reminder



Record Books and Entry Forms for County Fair
are due Monday, July 2nd at 5:00 p.m. in the
Pendleton and Hermiston Offices, and at
12:00 p.m. in the Milton-Freewater Office.

Entry forms are available by going to the 4-H Fairs and Activities page on the Umatilla County Extension Service website: <http://extension.oregonstate.edu/umatilla/>. You can fill your entry form out using a computer, however, **entry forms are not accepted on-line**. Once you have your entry form filled out, you need to print it, sign it, get all required signatures, and turn it in with your 4-H Record Book on July 2.



If you have any questions please call the 4-H Office at 541-278-5404.



Oregon State University Extension Service offers educational programs, activities, and materials - *without regard to race, color, religion, sex, sexual orientation, national origin, age, marital status, disability, and disabled veteran or Vietnam-era veteran status* - as required by Title VI of the Civil Rights Act of 1964, Title IX of the Education Amendments of 1972, and Section 504 of the Rehabilitation Act of 1973. Oregon State University Extension Service is an Equal Opportunity Employer. The Extension Service offers its programs and materials equally to all people. Reasonable accommodations will be provided to those with physical or mental disabilities in order to attend Extension programs. Please contact the Extension office in advance to make arrangements. Agriculture, Family and Community Development, 4-H Youth, Forestry, and Extension Sea Grant Programs. Oregon State University, United States Department of Agriculture, and Umatilla County cooperating.