

WSU Goat Production Team Members

**Jan Busboom**, PhD, Extension Meat Scientist  
Clark 123  
Washington State University  
Pullman, WA 99164-6310  
Phone: 509-335-2880  
e-mail: [busboom@wsu.edu](mailto:busboom@wsu.edu)

**Gary Fredericks**, Area Extension Dairy Specialist  
WSU-Clark County Extension  
Building G, Suite 100  
Brush Prairie, WA 98606-9565  
Phone: 360-254-8436  
e-mail: [garyf@wsu.edu](mailto:garyf@wsu.edu)

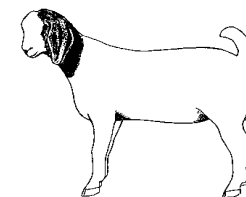
**Susan Kerr**, DVM, PhD, Klickitat County Extension  
Educator  
228 W. Main St., MS-CH-12  
Goldendale, WA 98620-9597  
Phone: 509-773-5817 FAX: 509-773-5707  
e-mail: [kerrs@wsu.edu](mailto:kerrs@wsu.edu)

**Frank Hendrix**, MS, Yakima County Animal Science  
128 N. 2<sup>nd</sup> St. Room 233  
Yakima County Courthouse  
Yakima, WA 98901-2631  
Phone: 509-574-1600 FAX: 509-574-1601  
e-mail: [hendrixf@wsu.edu](mailto:hendrixf@wsu.edu)

**Sarah Smith**, Safe Food Initiative Extension Faculty,  
Animal Sciences  
PO Box 37  
Ephrata, WA 98823-0037  
Phone: 509-754-2011 FAX: 509-754-0163  
e-mail: [smithsm@wsu.edu](mailto:smithsm@wsu.edu)

**David Youmans**, PhD, Extension Rural Development  
Specialist  
24106 N. Bunn Rd.  
Prosser, WA 99350-9687  
Phone: 509-786-2226 FAX: 509-786-9370  
e-mail: [youmans@wsu.edu](mailto:youmans@wsu.edu)

2005  
DIRECTORY  
OF  
PACIFIC NORTHWEST  
MEAT GOAT  
PRODUCERS



Published by the WSU Goat Production Team



The WSU Extension Goat Production Team hopes you find this directory of PNW meat goat producers helpful. Our mission is to meet the educational needs of meat goat producers and help their farms become a profitable and sustainable source of high-quality food for the public.

We have many resources available, including publications, books and newsletters. Team members are available to conduct educational workshops, give presentations, answer questions, or help however we can to meet your educational needs. Refer to the inside back page of this directory for a list of team members.

A bi-lingual, bi-monthly newsletter called *The Kidding Pen* is available at no charge to interested goat producers. To subscribe and receive a hard copy or electronic version, contact:

Dr. Susan R. Kerr  
WSU-Klickitat County Extension  
228 West Main Street, MS-CH-12  
Goldendale, WA 98620  
(509) 773-5817 FAX (509) 773-5707  
[kerrs@wsu.edu](mailto:kerrs@wsu.edu)

Issues of *The Kidding Pen* are also available on-line at:  
<http://extension.oregonstate.edu/wasco/smallfarms/Kidding%20Pen/index.html>

WSU Extension programs and policies are consistent with federal and state laws and regulations on nondiscrimination regarding race, color, gender, national origin, religion, age, disability, and sexual orientation. Evidence of noncompliance may be reported through your local WSU Extension office.

## RESOURCES

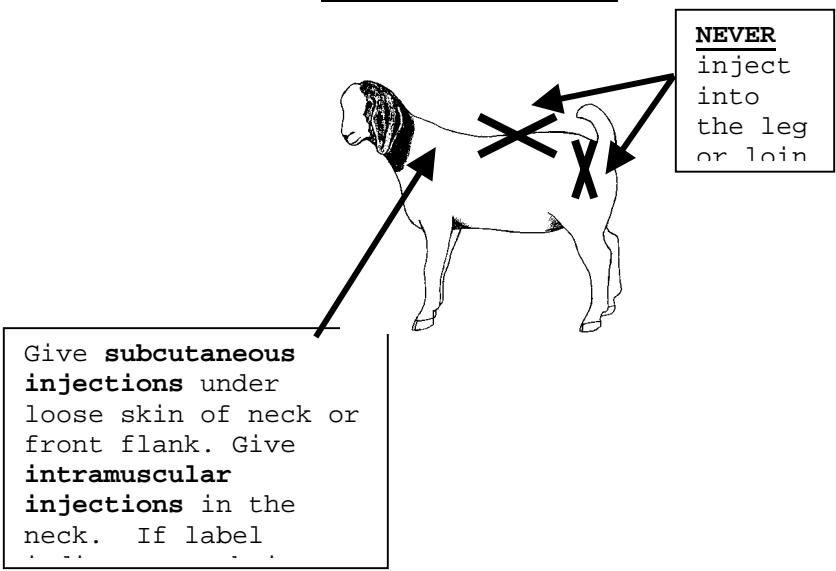
- **Goat Health Handbook**, by Thomas R. Thedford, DVM. Published in 1983 by Winrock International Institute for Agricultural Development, Technical and Informational Services, Route 3, Morrilton, AR 72110. ISBN 1-57360-001-6
- **Raising Meat Goats for Profit**, by Gail Bowman. Published in 1999 by Bowman Communications Press, PO Box 1626, Twin Falls, ID 83303. ISBN 0-9670381-0-3
- **Meat Goats**, by Sara Edmond. Published in 1994 by Alberta Agriculture, Food and Rural Development, Publishing Branch, 7000-113 Street, Edmonton, Alberta, Canada T6H 5T6. ISBN 0-7732-6119-2.
- **Raising Goats for Milk and Meat**, by Rosalee Sinn. Published by Heifer Project International, 1015 Louisiana Street, Little Rock, AR 72202.
- **Goat Medicine**, by Mary Smith and David Sherman. Published in 1994 by Williams and Wilkins, 351 West Camden Street, Baltimore, MD 21201-2436. ISBN 0-8121-1478-7
- **National 4-H CCS Meat Goat Curriculum**, available from [www.n4hccs.org](http://www.n4hccs.org)

## Web Sites

\*\*Not all information approved by WSU Extension

- [www.sheepandgoat.com](http://www.sheepandgoat.com)
- [www.boergoats.com](http://www.boergoats.com)
- [www.jackmauldin.com](http://www.jackmauldin.com)
- [www.goatworld.com](http://www.goatworld.com)
- [www.meatgoats.com](http://www.meatgoats.com)
- [www.abga.org](http://www.abga.org)
- [www.theibga.org](http://www.theibga.org)
- [www.inform.umd.edu/EdRes/Topic/AgrEnv/ndd/goat/](http://www.inform.umd.edu/EdRes/Topic/AgrEnv/ndd/goat/)
- [www.cals.ncsu.edu:8050/an\\_sci/extension/animal/meat/goat/ahgoats\\_index.html](http://www.cals.ncsu.edu:8050/an_sci/extension/animal/meat/goat/ahgoats_index.html)

**Quality Assurance**  
**Is**  
**Everyone's Business!**



**Fae M. Adams**  
 Wild Goose Boer Goat Farm  
 245604 East 672 PR S.E.  
 Kennewick, WA 99337  
 509-586-3720  
[magoose@iglide.net](mailto:magoose@iglide.net)  
 ❖ Breeding stock, cabrito kids, live meat animals, manure

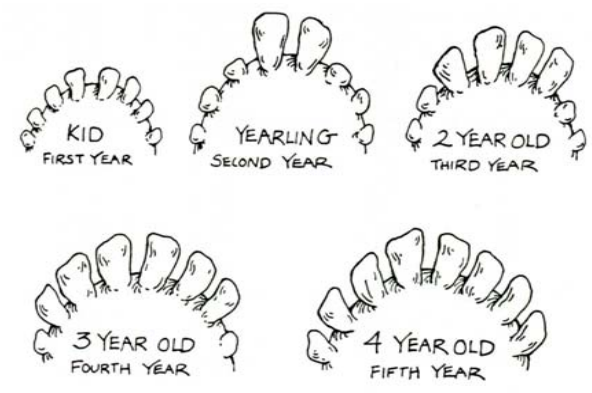
**Ray and Patricia Adams**  
 \*Starry\* Nights Farm  
 246006 East 672 PR S.E.  
 Kennewick, WA 99337  
 509-582-0970  
[rpadams1@aol.com](mailto:rpadams1@aol.com)  
[www./geocities.com/starry-nights-farm](http://www./geocities.com/starry-nights-farm)  
 ❖ Breeding stock, meat, buck service, milk, show, DHIR

**Gary and "So" Yi Deuk Angell**  
 Rocky Ridge Ranch  
 36196 Oehlschlaeyer Road North  
 PO Box 175  
 Reardan, WA 99029  
 509-796-3988  
 ❖ Boer meat goats, live meat animals, unregistered bucks for sale, cabrito/chevron, USDA-inspected retail half and whole carcasses

**Guy and Bernice Baker**  
 Bee Bee Nubians  
 4525 South Columbus Avenue  
 Goldendale, WA 98620  
 509-773-5619  
[BeeBeenubian@gorge.net](mailto:BeeBeenubian@gorge.net)  
 ❖ Breeding stock, live meat animals, 4-H kids, manure, Nubian and Boer buck service, pack and harness animals

=====

**Judging the Age of Goats by Their Teeth**  
 (Figure illustrated by Barbara Carter from "Raising Goats for Milk and Meat" by Rosalee Sinn, published by Heifer Project International and used with permission).



**Zoe J. Barr**

Barr "Z" Boers  
3483 Selah Loop Road  
Selah, WA 98942  
509-697-8481

[Barrzboers@aol.com](mailto:Barrzboers@aol.com)

❖ Boer breeding stock, live meat animals, buck service; 4-H discount

**Whitney Brown**

El Rancho Costa Plenty  
4050 Shellen Road  
Sunnyside, WA 98944  
509-837-7935

[ivy@bentonrea.com](mailto:ivy@bentonrea.com)

❖ Breeding stock, cabrito kids, live meat animals, brush control

**Sarah Budde**

5520 Southwest Daisy Road  
Port Orchard, WA 98367  
360-895-0175

[vqfarm@wavecable.com](mailto:vqfarm@wavecable.com)

[www.vqfarm.com](http://www.vqfarm.com)

❖ Registered breeding stock, show stock, breeding service, live meat kids available occasionally

**Kassy and Kelly Call**

Ewe Kids 4-H Club  
70 Mott Road  
Lyle, WA 98635  
509-365-2068

[loric@gorge.net](mailto:loric@gorge.net)

❖ Boers, Fainting goats, Kikos; breeding stock, buck service, live meat animals

**Jeff and Jolene Stewart**

Sandy Ridge Ranch  
214 South Center Valley Road  
Sand Point, ID 83864  
208-255-1390 (home)  
208-263-5310 (work)

[jstewart@coldream.com](mailto:jstewart@coldream.com)

❖ Boer x Spanish meat goats, live meat animals breeding stock, brush control, pets

**Karen and Stephen Thomas**

Thomas Farms  
17641 Southeast Lake Moneysmith Road  
Auburn, WA 98092  
253-333-0901

❖ Show-quality full blood and percentage Boer breeding stock, breeding services, pets, live meat animals, composted manure

**Donald and Susan Puz**

Talking Horse Ranch  
22440 SR 28 East  
Lamona, WA 99144  
509-982-2650

[puz@odessaoffice.com](mailto:puz@odessaoffice.com)

[www.geocities.com/talkinghorseranch/](http://www.geocities.com/talkinghorseranch/)

❖ Breeding stock, live meat animals

**Michelle Sayer**

BRC Mountain Goats  
PO Box 104  
Appleton, WA 98602  
509-493-4419

[brcmtn@yahoo.com](mailto:brcmtn@yahoo.com)

❖ Traditional and black, red and paint Boers,  
registered and unregistered percentages, meat  
wethers

**Brian and Sue Siebert**

Siebert Springs Farm  
240 Siebert Springs Road  
PO Box 1583  
Newport, WA 99156  
509-671-0140

❖ Animals available in 2004

**Tom and Darlene Silliman**

Meadowwood Farm  
20228 Southeast 400<sup>th</sup> Street  
Enumclaw, WA 98022  
360-802-3845

[tomdarsavy@cs.com](mailto:tomdarsavy@cs.com)

❖ Breeding stock, cabrito kids, live meat animals,  
brush control, buck service

**Roy Collier**

Collier's Boer Goats  
2871 Thompson Road  
Cowiche, WA 98923  
509-678-4836

[hobbsrwc@prodigy.net](mailto:hobbsrwc@prodigy.net)

**Robert and Cheryl Cosner**

Cosner Star Livestock Company  
54746 Upper Dry Creek Road  
Weston, OR 97886  
541-938-6262

[cosner@bmi.net](mailto:cosner@bmi.net)

❖ Meat goat kids and cabrito kids, 4-H project  
does and wethers

**Dan DiCicco and Lynda Kofford-DiCicco**

Toboton Creek Farm  
17847 Bald Hills Road Southeast  
Yelm, WA 98597  
360-894-5691

[lyndants@ywave.com](mailto:lyndants@ywave.com)

[www.nwboergoats.com](http://www.nwboergoats.com)

❖ Breeding stock, cabrito kids, live meat animals,  
composted manure, brush control, buck service

**Sharon Harris**

Willow Wisp Ranch  
5290 Lyons Road  
Ellensburg, WA 98926  
509-925-7111

❖ Cabrito kids, live meat animals

**Roberta Hoctor**

4H Farms  
36 Hoctor Road  
Goldendale, WA 98620  
509-773-4034

[robertahoctor@hotmail.com](mailto:robertahoctor@hotmail.com)

❖ Boer-Nubian cross meat goats, 4-H project animals, farm gate sales

**Craig Madsen**

Healing Hooves  
PO Box 148, 49332 Sobek Road  
Edwall, WA 99008

[shepherd@healinghooves.com](mailto:shepherd@healinghooves.com)

[www.healinghooves.com](http://www.healinghooves.com)

❖ Vegetation management using goats and sheep, consulting services to help clients develop a plan for their land; percentage Boer goats and St. Croix hair sheep for live meat animals, breeding stock and 4-H projects; full blood and percentage Boer buck service

**Douglas Maier**

Breezy Meadow Cashmere Farm  
810 Van Wyck Road  
Bellingham, WA 98226  
360-733-6742

[fibergoat@earthlink.net](mailto:fibergoat@earthlink.net)

<http://home.earthlink.net/~fibergoat>

❖ Cashmere and Boer-cross goats, live meat animals, breeding stock, buck service, Maremma livestock guardian dogs

**Scott and Mary Mattox**

SMM Farms  
1781 North Bellevue Road  
Eltopia, WA 99330  
509-266-4325

❖ Buck service, live meat animals

**Tina Meyette**

Meyette Farms  
8999 Kulm Road  
Othello, WA 99344  
509-346-2461

[dmeyette@atnet.net](mailto:dmeyette@atnet.net)

❖ Full and percentage Boer breeding stock, live cabrito kids, live meat animals

**Mickey Nielsen**

Liberty Farm  
5252 Highway 12  
Yakima, WA 98908  
509-964-3708

[mnielsen7@aol.com](mailto:mnielsen7@aol.com)

❖ Live meat animals, pelts, brush control, buck service, limited breeding stock, cabrito kids, composted manure

**Diana D. Pafford**

Lazy D's Menagerie  
1280 Ownby Road  
Goldendale, WA 98620  
509-773-6630 (home)  
360-430-9116 (cell)

[dede@gorge.net](mailto:dede@gorge.net)

❖ Breeding stock, live meat animals, brush control, buck service

**Theresa and Perry Parker**

Parker's Boer Goats and Tennessee Walkers  
4762 Mae Valley Road Northeast  
Moses Lake, WA 98837  
509-766-8186

[tparker@nwi.net](mailto:tparker@nwi.net)

[www.parkerswalkers.com](http://www.parkerswalkers.com)

❖ Breeding stock, meat animals