



# Mid-Columbia Small Farms & Acreage Newsletter

## Washington State University

**Klickitat Co. Ext.**  
228 W. Main St.  
Goldendale, WA 98620  
(509) 773-5817  
Ce6620@coopext.cahe.wsu.edu

**Skamania Co. Ext.**  
P.O. Box 790  
Stevenson, WA 98648  
(509) 427-9427

<http://skamania.wsu.edu/>

## Oregon State University

**Hood River Co. Ext.**  
2990 Experiment Sta. Dr.  
Hood River, OR 97031  
(541) 386-3343

**Sherman Co. Ext**  
409 Hood Street  
PO Box 385  
(541) 565-3230

**Wasco Co. Ext.**  
400 E. Scenic Dr.  
Suite 2.278  
(541) 296-5494

<http://extension.oregonstate.edu/hoodriver>

<http://extension.oregonstate.edu/wasco>

<http://extension.oregonstate.edu/sherman>

Volume 5, Issue 1

January—February 2005

Inside this issue:

<i>Calendar</i>	2
<i>Coming Events</i>	4
<i>Resources</i>	5
<i>Publications</i>	
<i>Web Pages</i>	6
<i>Newsletters</i>	6
<i>Grants</i>	6
<i>Agency Notes</i>	7
<i>Smoke Management</i>	7
<i>Woodland Activities</i>	8



### Extension Service

Oregon State University and Washington State University Extension Services offer educational programs, activities, and materials—without regard to race, color, religion, sex, sexual orientation, national origin, age, marital status, disability, and disabled veteran or Vietnam-era veteran status—as required by Title VI of the Civil Rights Act of 1964, Title IX of the Education Amendments of 1972, and Section 504 of the Rehabilitation Act of 1973. OSU and WSU Extension Services are Equal Opportunity Employer.

Dear Small Farmer and Landowner,

Welcome to the January/February issue of the Small Farms and Acreage Newsletter. In this issue we have two short articles that will be of interest. The first article is by Ole Helgerson, WSU Skamania County Forestry Agent, concerning things you can do this fall and winter in your woodlands to help your trees prepare for spring growth.

The second article is one that I wrote to address smoke management issues in the Mid-Columbia. As all are aware, burning can be a very useful tool. To keep that tool available in the future, we need to use it wisely and understand that there are a number of factors including topography, weather and the material to be burned that all impact the ability to disperse smoke and not turn it into a health hazard for others. In addition to the article, there will also be a Smoke Management Workshop that will be held January 20<sup>th</sup> from 1-4 pm at The Dalles Discovery Center. This workshop will focus on those factors that influence smoke management in the Mid-Columbia and is open to all, irregardless of whether they are interested in burning crop residue or just leaves in their backyard.

Also do not forget, the Wasco County Soil and Water Conservation District Tree and Shrub sale order signup will close on January 28<sup>th</sup>. The material

they have available is selected for suitability for this region, so is well adapted to our dryer conditions in the Mid-Columbia. For more information please contact the Wasco County Soil and Water Conservation District at 541-298-8559.

As you review this issue, if you should have any questions about any of the information found in the newsletter or questions about small farming, please give us a call. You can contact your local county extension office at the numbers found on the top of this page. Again, please let us know how we can be of help to you.

Also as a reminder, if you receive this newsletter electronically, please make sure you let us know whenever you change your e-mail address so we can make sure you remain on the mailing list.

Sincerely,

Brian V. Tuck  
Mid-Columbia Extension Agent  
Oregon State University  
Wasco County

# Calendar of Events

## 2005

### January



- 4 SAIF Corp. Ag Safety Seminar, Monarch Hotel and Conference Center, 12566 S.E. 93rd Ave., Clackamas, 9:30 a.m.- 2 p.m. Early registration required. Information: Sunny Vancil, (503) 373-8406 or (1-800) 285-8525.
- 5 SAIF Corp. Ag Safety Seminar, Oregon State University North Willamette Extension office, 15210 N.E. Miley Road, Aurora, 9:30 a.m.- 2 p.m. Early registration required. Information: Sunny Vancil, (503) 373-8406 or (1-800) 285-8525.
- 7 Oregon Blueberry Commission annual Research and Public Relations Roundup, North Willamette Research and Extension Center, Aurora, 8 a.m. Information: (503) 364-2944.
- 11-12 Small Fruit Pest Conference will be held at Timberline Lodge, OR. Call North Willamette Research & Extension Center at 503-678-1264 for more information.
- 12 Light microscopy class, Soil Foodweb Inc., Corvallis. For growers, composters, compost tea makers wanting to learn to assess biological quality of soils and amendments. Information: (541) 752-5066.
- 11-13 Western Washington Horticultural Association Conference, Radisson Hotel Seattle Airport, 17001 Pacific Highway S., Information: Linda Sanford, (253) 445-4575.
- 11-13 Climate Friendly Farming, Bioenergy and Bioproducts Presentation, Spokane Ag Expo, Spokane, WA. For more information contact cekruger@tfrec.wsu.edu, 509-663-8181 ext. 235
- 13 North Willamette Horticultural meetings (berry day) will be held at the Airport Ramada Inn, Portland, OR. Details soon. Call North Willamette Research & Extension Center at 503-678-1264 for more information.
- 13-14 2005 Northwest Direct Seed Cropping Systems Conference and Trade Show, Maribeu Park Hotel, 1100 N. Sullivan, Spokane. Registration \$90, or \$100 after Jan. 5. Registration available by late November at <http://pnwsteep.wsu.edu/directseed>. Additional information: (509) 783-4676 or e-mail Heather Filbin, [heather@mauergroup.com](mailto:heather@mauergroup.com).
- 16-19 91st Annual Northwest Food Manufacturing and Packaging Exposition, Oregon Convention Center, Portland. Register online: [www.nwfpa.org](http://www.nwfpa.org).
- 18 SAIF Corp. Ag Safety Seminar, Tuality Health Education Center, 334 S.E. 8th Ave., Hillsboro, 9:30 a.m.- 2 p.m. Early registration required. Information: Sunny Vancil, (503) 373-8406 or (1-800) 285-8525.
- 19 Relationships between Forestry, Deer and Elk in Western Oregon, conference at Oregon State University, Corvallis. Information: visit conference website at <http://outreach.cof.orst.edu/ForestryDeerElk/>.
- 20 Smoke Management Seminar, Discovery Center, The Dalles from 1-4:30 pm. See the Coming Events section in this newsletter for more details.
- 26-27 Oregon Association of Nurseries seminars at Columbia River DoubleTree during Northwest Ag Show Topics such as Erosion Control, Propagation and IPM will be covered. There will be three pesticide recertification credits available. To register, download the form from [www.oan.org](http://www.oan.org) or call the OAN office. The member cost is \$25 per day (\$50 for non-members) and \$15 for full-time students only. Preregistration is preferred, but on-site registration will be accepted. There will be free shuttles running to the trade show at the Expo Center. See the Northwest Ag Show website for more details <http://www.nwagshow.com/>
- 26-29 Oregon Horticulture Society Meetings, Jantzen Beach Red Lion, Portland. Meetings to cover most of the crops grown in the Willamette Valley, such as blueberries, small fruits, hazelnuts, apples, cherries and nursery crops. See the Northwest Ag Show website for more details: <http://www.nwagshow.com/>

# Calendar...continued

## February



- 1 SAIF Corp. Ag Safety Seminar, Red Lion Hotel, 3301 Market St. N.E., Salem, 9:30 a.m.- 2 p.m. Early registration required. Information: Sunny Vancil, (503) 373-8406 or (1-800) 285-8525.
- 4 SAIF Corp. Ag Safety Seminar, Oregon State University North Willamette Extension office, 15210 N.E. Miley Road, Aurora, 9:30 a.m.- 2 p.m. Early registration required. Information: Sunny Vancil, (503) 373-8406 or (1-800) 285-8525.
- 8 SAIF Corp. Ag Safety Seminar, (Spanish), Red Lion Hotel, 3301 Market St. N.E., Salem, 8 a.m.-noon. Early registration required. Information: Sunny Vancil, (503) 373-8406 or (1-800) 285-8525.
- 10 2005 Agriculture, Family and Consumer Sciences, and Natural Resources Career Fair, Ensminger Pavilion (across from Alumnae Centre), Washington State University, Pullman, 10 a.m.-3 p.m. To register online: <http://academic.cahnrs.wsu.edu/employers.html>.
- 16 SAIF Corp. Ag Safety Seminar, Discovery Center, Wasco County Historical Museum, 5000 Discovery Drive, The Dalles, 9:30 a.m.-2 p.m. Early registration required. Information: Sunny Vancil, (503) 373-8406 or (1-800) 285-8525.
- 17 SAIF Corp. Ag Safety Seminar, (Spanish), Discovery Center, Wasco County Historical Museum, 5000 Discovery Drive, The Dalles, 8 a.m.-noon. Early registration required. Information: Sunny Vancil, (503) 373-8406 or (1-800) 285-8525.
- 18-20 The Oregon Association of Nurserymen's 2005 Yard, Garden & Patio Show, presented by ProGrass, will feature 10 display gardens, more than 50 hours of educational seminars, Northwest wines, and more than 275 exhibitors. Hours are 10 a.m. to 9 p.m. Friday and Saturday and 10 a.m. to 6 p.m. on Sunday at the Oregon Convention Center in Portland. For more information visit [www.ygppshow.com](http://www.ygppshow.com).
- 19 Field demonstration of pruning techniques by Home Orchard Society members for variety of fruit trees and shrubs 9 am to 12 pm. Bring your pruning tools & appropriate outdoor wear. To be held at the Home Orchard Society Arboretum, Clackamas Community College. Directions to the arboretum are found at <http://www.homeorchardsociety.org/arboretum/directions/> \$10 Pre-registration through Clackamas Community College For more information and registration materials call Loretta at 503-657-6958, ext. 2246.
- 22 SAIF Corp. Ag Safety Seminar, (Spanish), Tuality Health Education Center, 334 S.E. 8th Ave., Hillsboro, 8 a.m.-noon. Early registration required. Information: Sunny Vancil, (503) 373-8406 or (1-800) 285-8525.
- 24-26 67th Annual Oregon Logging Conference, Lane County Fairgrounds and Eugene Hilton, Eugene. Information: [www.oregonloggingconf.com](http://www.oregonloggingconf.com) or call (541) 686-9191.
- 26 Fruit Tree Grafting: Beginning & Intermediate, Saturday, February 26, 9am-2:15pm, 9am -10:30am Beginning, 10:45am - 12:15pm Beginning, 12:45pm - 2:15pm Intermediate to be held at Clairmont Hall, Clackamas Community College. Cost is \$15 per session. Pre-registration through Clackamas Community College by calling Loretta at 503-657-6958, ext. 2246.
- 26 OR Farm Direct Marketing Conference, OSU <http://smallfarms.oregonstate.edu>, 800-365-0201

## March



- 5 Home Orchard Society Annual Scion Exchange and Rootstock Sale from 10am - 4pm. 100's of fruit tree scion wood available, rootstock for sale, valuable written information about fruit trees available, fruit tree supplies for sale, talk with experienced fruit growers. To be held at the Main Pavilion, Clackamas County Fairgrounds, Canby Oregon. \$5 admission fee at gate.
- 7-10 WSU 20th Annual Cheesemaking Shortcourse, Pullman, WA. Designed for experienced cheese makers, supervisory, management, quality control and marketing personnel from commercial/ industrial plants.
- 19 Clackamas County Tree School. Contact the Clackamas Co. Extension Office at 503-655-8631 for more information.

## Calendar...continued

22-24 Farmstead/Artisan Cheesemaking Course  
Mt. Vernon, WA. Designed for farmstead and small business operators interested in learning or improving cheesemaking procedures and processes.

### April

1-2 The New Food Entrepreneur: Value-Added Processing for Farm Profitability and Sustainable Food Systems, Green River Community College, Auburn, WA. Additional information will be available the next issue of the Small Farms Newsletter.

26 Dairy Farm and Specialty Cheese Processing Risk Management Seminar, Yakima, 8am-5:30pm,  
For more information: <http://agr.wa.gov/FoodAnimal/Dairy/DairyCheeseSeminar.htm>

28 Dairy Farm and Specialty Cheese Processing Risk Management Seminar, Arlington, WA , 8am-5:30pm. For more information: <http://agr.wa.gov/FoodAnimal/Dairy/airyCheeseSeminar.htm>

## Coming Events

### Smoke Management Seminar Fits Ag's Stewardship Model

Farmers, ranchers and orchardists in the Mid-Columbia region have long been recognized for their leadership in preserving their natural resources. The upcoming Smoke Management Seminar in January fits right into their stewardship practices. The seminar will be Thursday, January 20, at The Dalles Discovery Center, from 1 to 4:30 pm.

The Smoke Management Seminar will provide a basic understanding of the delicate interrelationships between smoke, the weather and geological features in the region and how producers can manage their burning to when it is needed and what conditions are best for smoke dispersal with a minimum of impact on air quality.

Burning is still a valuable tool for orchardists, woodland managers, grain farmers and ranchers to manage certain diseases and invasive weeds in their production systems. It helps contribute to product quality and quantity and the economics of ag production. Producers are also keenly aware of regulatory demands and the need to respect others. They will want to attend to learn how to better manage this tool. Improving smoke management skills reduces the risk of burdensome regulatory rules for burning in the future.

The workshop is sponsored by the Wasco and Sherman County offices of the OSU Extension, Natural Resource Conservation Service, DEQ, Soil and Water Conservation Districts and the Wasco County Wheat Growers and is open to all regardless of whether you are farming or just interested in gaining a better understanding of smoke management.

### WSU Small Farm Course Offered

Beginning in January, the Cultivating Success partnership is offering its popular course on starting and sustaining a profitable small farm. Community members in the 8 locations in are invited to sign up for this intensive, hands-on learning opportunity.

The 12-week course is based on NxLevel's award-winning curriculum "Agricultural Entrepreneurship - Tilling the Soil of Opportunity." The course features a full line-up of local guest speakers: bankers, accountants, attorneys, and successful farm entrepreneurs.

Participants will gain skills in business planning, direct marketing and record-keeping. They'll also receive information on federal and state programs targeted to the needs of small producers, including resources to improve risk management and conservation practices. The courses are typically co-led by a university Extension faculty member and an instructor from the Small Business Development Center.

The Cultivating Success partnership includes Washington State University's Small Farms Program, the University of Idaho, and the non-profit Rural Roots. The course fee ranges from \$120 to \$200, depending on the community. Scholarship funds, and university or continuing education credit, are available in all locations.

More information: Theresa Beaver, WSU-UI Program Coordinator, (208) 885-7787 or [tbeaver@uidaho.edu](mailto:tbeaver@uidaho.edu). Spring 2005 Course Locations in Washington include: Colfax, Mount Vernon, Okanogan, Port Orchard, Port Townsend, Renton, Spokane and Wenatchee.

# Resources

## Publications



### OSU Extension Publications

The following are new publications from Oregon State University. Please see the OSU Web Site at for more information on these and other publications at: <http://eesc.oregonstate.edu>

**EC 1569**, Pacific Chorus Frog, new November 2004  
<http://eesc.oregonstate.edu/agcomwebfile/edmat/ec1569.pdf>

**EC 1570**, Hummingbird, new November 2004  
<http://eesc.oregonstate.edu/agcomwebfile/edmat/ec1570.pdf>

**EM 8879-E**, Nutrient Management Guide: Hybrid Seed Carrot (Central Oregon), new November 2004 (available only online) <http://eesc.oregonstate.edu/agcomwebfile/edmat/em8879-E.pdf>

**EM 8880-E**, Management Guide for Drip Irrigation on Seed Carrots in Central Oregon, new November 2004 (available only online) <http://eesc.oregonstate.edu/agcomwebfile/edmat/em8880-E.pdf>

**EC 1568**, American Robin, October 2004  
<http://eesc.oregonstate.edu/agcomwebfile/edmat/ec1568.pdf>

**PNW 576**, Tree Growth, Forest Management, and Their Implications for Wood Quality, September 2004  
<http://eesc.oregonstate.edu/agcomwebfile/edmat/pnw576.pdf>

**Please note:** If you have a link to E-answers, an online resource to more than 50 Land Grant university Extension Service and Agricultural Experiment Station websites, please update your links to:  
<http://e-answers.adec.edu/>

## Publications from other sources

The 2005 Farming Sourcebook is now available for download at [http://www.sijournal.com/docs/2005\\_farming\\_sourcebook\\_final.pdf](http://www.sijournal.com/docs/2005_farming_sourcebook_final.pdf). (PDF document)  
The Sourcebook features regional information and resources on: Certification and labeling, Soil management, Seeds, Pest, Disease and Weed Management, Sales and Marketing, Recycling, Renewable Energy, and More The focus of the publication is on sustainable and certified production.

**Spelt for Human Health and Nutrition (EB1977).** Spelt is very closely related to wheat, and spelt flour is used to make bread, pasta, cold and hot cereals, and baking mixes. This new publication, EB1977, answers common questions that consumers may have regarding whether or not spelt can be used as alternative to wheat, especially for those people who suffer from wheat allergies or gluten intolerance. This publication also provides nutritional and cooking information for spelt. 8 pages. Available through WSU Publications, <http://pubs.wsu.edu/>.

**Conducting a Successful Timber Sale**  
<http://clean-water.uwex.edu/pubs/timbersale/>

**Harvesting and Marketing Noble Fir Boughs from Christmas Tree Plantations**  
<http://eesc.orst.edu/agcomwebfile/EdMat/html/EC/EC1500/EC1500.html>

**A Directory of Value Added Wood Products Producers in Washington State**  
<http://cru84.cahe.wsu.edu/cgi-bin/pubs/MISC0477.html>

**The Center for Integrated Agricultural Systems** at the University of Wisconsin-Madison has published a new report that provides background information for farmers who are considering selling their products through retail stores. Based on dozens of interviews with retail buyers, the report gives advice on preparing yourself and your products for market, determining whether retail is your best option, and selecting the right store for your products. The report also discusses the needs of retail buyers and the advantages and challenges of selling locally produced goods. The report, **Working with Retail Buyers**, is available online (PDF / 214 kb).  
**URL:** <http://www.cias.wisc.edu/>

## Resources....continued

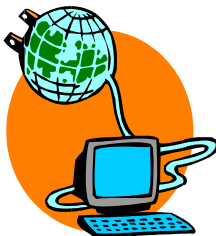
### **Contracts, Markets, and Prices: Organizing the Production and Use of Agricultural Commodities.**

This report assesses what we know about agricultural contracting's effects on risk, productivity, market power, and price discovery. The report can be found at: [www.ers.usda.gov/publications/aer837](http://www.ers.usda.gov/publications/aer837)

### **Web Pages**

#### **The Organic Information website**

was developed by the Organic Agriculture Consortium/Scientific Congress on Organic Agricultural Research was funded by USDA. The site offers information on production practices, research, economics etc. The site is located at [www.organicinfo.org](http://www.organicinfo.org).



**The New Farm website** by Rodale Institute is designed with a focus on farmer outreach and education and exchange of farmer to farmer know-how. The website can be found at [www.newfarm.org](http://www.newfarm.org)

**The Living with Bugs website** mission is to provide you with accurate, up-to-date and *unbiased* information about solving everyday bug problems around your home, business and landscape using *least toxic methods*. We specialize in yellowjackets (yellow jackets), carpenter ants, head lice (headlice), fleas, boxelder bugs, powderpost beetles, mosquitoes, dust mites, termites, aphids, spider mites, slugs, and other everyday pest problems. We also consult with commercial nursery (including bamboo), greenhouse and Christmas tree growers <http://www.livingwithbugs.com/>

**Oregon State University** has developed a one-stop shop for the latest research and information in a new organization called Vine and Wine Intelligence Network, or VVIN for Oregon's rapidly growing wine industry. About 50 OSU researchers and staff are taking part in this information network, which will serve the 250 existing Oregon wineries. With experts in everything from growing grapes to marketing and consumer research, OSU faculty and staff are on hand to help Oregon's wine industry. The OSU Vine and Wine Intelligence Network can be visited on line at: <http://vvin.oregonstate.edu/>.

### **The following are several very good woodland websites.**



Forest Stewardship Coached Planning Course Streaming Video  
<http://ext.nrs.wsu.edu/Video/index.htm>

Far West Specialty Woods <http://www.fsw.com/>

The Overstory: Agroforestry e-Journal <http://www.agroforestry.net/overstory/>

Small Forest Landowner Office  
<http://www.dnr.wa.gov/sflo/>

Consulting Foresters Directory <http://ext.nrs.wsu.edu/publications/forestry/consultingdirectory.htm>

Secondary Wood Products Directory  
<http://150.131.32.168/WA/>

U.S. Non-timber Forest Product Species Database [www.ifcae.org/ntfp/](http://www.ifcae.org/ntfp/)

### **Newsletters**

The December issue of OSU Extension's Northwest Gardeners' eNews is full of ideas for the garden, and the gardener, this holiday season. It is available at <http://eesc.orst.edu/agcomwebfile/garden/enews/>. You can also subscribe and view past issues of the newsletter by visiting this site.

### **Grants**

#### **Wasco County Soil and Water Conservation District Grants - \$\$ Available**

Wasco County Soil and Water Conservation District continues to have funds available for grants of up to **\$10,000** for conservation projects that save soil or water or improve wildlife habitat. Cost-share rates vary from 50% to 75%, depending on the amount requested. Grants are competitive and are considered by a local panel every month and require a minimal of paper work for the applicator. Interested parties should contact Jennifer Clark at Wasco County SWCD, (541) 296-6178 x119.

## Resources..... continued

### Family Forest Fish Passage Program

provides 75%-100% of the cost of replacing, repairing or removing fish barriers such as culverts, weirs, dams, spillways and other artificial instream structures. To qualify, you must be a small forest landowner (harvest less than 2 million board feet of timber per year) and have a fish barrier that is on forestland. Application Deadline: June 30, 2005  
<http://www.dnr.wa.gov/sflo/fffp/>

**Wildlife Habitat Incentives Program** provides up to 75% cost-sharing for such wildlife habitat enhancement projects as: forage enhancement for threatened wildlife species, reestablishment of threatened habitat types, wetland and riparian enhancement and others. Application Deadline: Open enrollment  
<http://www.wa.nrcs.usda.gov/programs/whip/whip.html>

## Keeping in Touch

### Wasco County Soil & Water Conservation District



#### 2005 Tree Sale

The annual Wasco County Tree and Shrub Sale is in full swing and orders are being taken now until January 28. You can obtain order blanks by either calling the Wasco County Soil and Water Conservation District at 541-298-8559 ext 3, or by requesting an electronic copy from Ron Graves at [ron.graves@oacd.org](mailto:ron.graves@oacd.org)

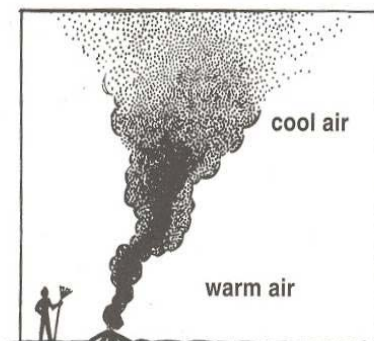
## Feature Articles

### Is Smoke Getting Into Your Eyes?

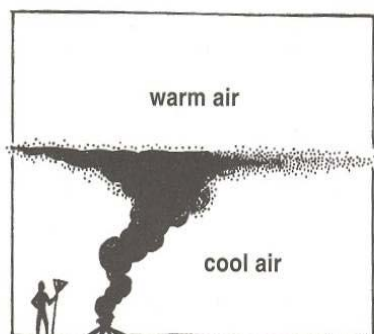
Airshed management in the region is becoming more and more of an issue as we look to maintaining and improving the quality of air we breathe. One very important part of this issue is managing smoke on agricultural, forestry and non-agricultural lands in a way that reduces impact on health and safety issues.

Good smoke management is contingent on a strong understanding of the interrelationships between smoke, the weather and geological features in the area. The need for a better understanding of these relationships has been aptly demonstrated during these last few weeks in The Dalles area with the strong inversion that has settled over the Gorge.

Inversions, which occur during calm, cool periods when the air near the soil surface is cooler than the air above it. The warm air on top blocks the air



Normal conditions: Smoke rises and disperses.



Inversion condition: Smoke concentrates.

near the soil from moving up. The result has been that smoke from fires including backyard leaf fires instead of going up into the atmosphere and dispersing hangs thick in the gorge close to the ground. Inversions are common in the gorge particularly in the fall and winter months. Folks who are planning to burn should understand that when inversions occur you should not burn on those days. You should wait until there is some air movement to help dilute and disperse the smoke. There is a simple test that folks can use to check for inversion conditions. Conduct a small test burn, and watch the smoke rise. If it rises not more than 15-20 feet before it spreads out, you most likely have an inversion condition, which means you should not burn that day.

There is now good information concerning current wind conditions that is available on the web that will be very helpful as you make your

## Smoke Management ... continued

decision to burn. Sites include: <http://www.agriculture.com/agweather/maps/windsp.html>, or, six hourly wind forecasts for your area at "Weather Underground" (<http://wunderground.com>).

To help folks both those in farming and those who just want to burn a pile of brush better understand good burning practices, Wasco and Sherman County offices of OSU Extension, Natural Resource Conservation Service, DEQ, Soil and Water Conservation Districts

and the Wasco County Wheat Growers will be sponsoring a workshop on Smoke Management. This workshop is open to all in the Mid-Columbia and will be held January 20<sup>th</sup> at The Dalles Discovery Center from 1 to 4:30 pm. There is no charge for this workshop. For further information, please contact the Wasco County Extension Office at 541-296-5494 or the Sherman County Extension Office at 541-565-3230 or the Wasco Soil and Water Conservation District at 541-298-8559 ext 3 for more information.

### FALL AND WINTER WOODLAND ACTIVITIES

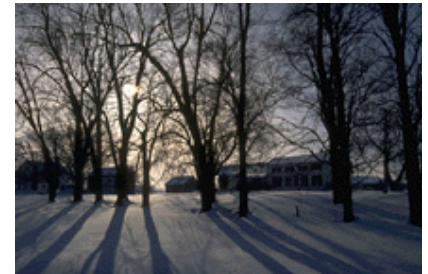
*By Ole Helgerson,  
Skamania County Extension Forestry Agent*

Although trees and other woody plants have mostly stopped active growth, conifers are still capturing sunlight as photosynthesis and storing it in reserve for their burst of spring growth. Similarly, there is much that can be done at this time of year by woodland owners to improve their forests' growth during the next year.

Fall and winter is a good time to release seedlings from competing woody vegetation either by mechanical release with power saws or directed herbicide applications to stems. The cooler weather and lack of foliage make it easier to cut brush, pre-commercially thin stands or direct a spray of herbicide. In both situations, work carefully. Chainsaw injuries can require medical attention and be life threatening. Herbicides applied to brush stems, though typically moderate to low in toxicity, must be applied according to label instructions to be effective while protecting the operator and surrounding environment.

If it is just too cold or wet to work outdoors, inspect equipment and accomplish any needed repairs. Next on the list is record keeping. Let's see, just where are those load tickets from this year's timber sale? Whether you store your receipts in a shoe box or on a computer, recording the "four D's" .... date, dollars, details, and direction (cross reference) for expenses, income and any time that you spend in managing your property can have important estate and income tax ramifications. Yes, record keeping counts in demonstrating active woodland management.

If you harvested timber last year in a regeneration harvest (clearcutting or shelterwood), make sure that you have scoped out the planting site for root



disease, weed or animal problems, ordered seedlings that match the site and have lined up reputable planters and identified post-planting seedling maintenance. These are all easier to figure out before planting than after the fact. The sooner seedlings are planted after timber harvest, the faster they will start to grow. Letting brush and grass get a head start slows seedling growth.

Getting ahead on these and other tasks will get your trees off to a better start next year and reduce your future workload. For questions contact Ole Helgerson, WSU Extension Forester, [helgerso@wsu.edu](mailto:helgerso@wsu.edu), 509-427-9427. WSU programs and employment are open to all without discrimination.

#### Subscribe Now!

Small Farms & Acreage Newsletter  
To receive a paper copy of the newsletter, please send your address and a check for **\$6.00** to **Sherman County Extension** for 1 year's subscription (6 issues).

Mail to: **OSU Sherman County Extension  
P.O. Box 385  
Moro, OR 97039**

The electronic version of the newsletter is FREE!  
Contact: [kim.mccullough@oregonstate.edu](mailto:kim.mccullough@oregonstate.edu)