

# ◆ CPO #4K NEWSLETTER ◆

Citizen Participation Organization #4K

Serving: King City and vicinity

CPO Newsletters available on the web at <http://extension.oregonstate.edu/washington/cpo-4k-king-city-and-vicinity>

CPO 4K Map: [http://extension.oregonstate.edu/washington/sites/default/files/CPO4K\\_0.pdf](http://extension.oregonstate.edu/washington/sites/default/files/CPO4K_0.pdf)

Washington County

November 2009



## Extension Service

Oregon State University Extension Service supports CPOs through an intergovernmental agreement with Washington County, the sole funder of the CPO program. Extension CPO coordinators provide information on land use and livability issues, resource referrals, and work with CPO members to increase understanding of public policy and decision-making processes.

This newsletter material was developed by representatives of your local CPO and is forwarded to you as part of the Extension Service's support to citizen involvement in local government. Washington County administration, departments, and/or officials claim no responsibility, expressed or implied, for the content of this document.

### CPO 4K EXECUTIVE COMMITTEE

*Chair* Kathy Stallkamp, 503-639-3274

*Secretary* Carol Bolton

*CCI Rep* Mike Meyer

*Members-at-large:* Rita Loberger, Jack

Miller, Art Rutkin, Chuck Fessler

### CPO COORDINATOR

Margot Barnett, OSU Faculty

Phone: 503-821-1114

Fax: 503-690-3142

Email: [margot.barnett@oregonstate.edu](mailto:margot.barnett@oregonstate.edu)

OSU Washington County Office

18640 NW Walker Road, #1400

Beaverton, OR 97006-8927

To review the Bull Mountain Community Plan (see Southern Lowlands area for CPO 4K), go to:

<http://www.co.washington.or.us/deptmts/lut/planning/publicat.htm>

## Citizen Participation Organization 4K

Monday, November 16, 2009

7:00 p.m.

**Highlands Club House**  
**12930 SW Peachvale**

### AGENDA

#### Welcome and Announcements

**Presentation** **Conflict Mediation Services.** Jim Brooks from the Beaverton Dispute Resolution Center will provide information about assistance available for Washington County citizens. The Dispute Resolution Center offers help to resolve neighborhood and community issues. Mediators are professionally trained staff and community volunteers who are skilled in communication and conflict resolution. Mediation is free, confidential, voluntary and a good alternative to going to court.

**Discussion** **CPO Special Project Fund.** Vote on a community project our CPO will sponsor. Ideas include:

- Traffic control device for Fischer Road
- Fischer Road Beautification Equipment and Supplies
- Tualatin Valley Fire Flagpole

Additional ideas are welcome. Approximately \$325 is available thru the CPO Special Project Fund. Funds can support one or more projects and should benefit our community.

**Discussion** **CPO Restructuring.** Discussion will continue on the possible restructuring of area CPO's. Topics of discussion include:

- How does the Tigard letter requesting the formation of a new CPO impact CPO 4K?
- How might the letter impact other CPO's and what concerns or issues have these CPO's expressed?
- Should CPO 4K consider a boundary change?
- What characteristics make our CPO unique or effective?

**Open Forum** An opportunity to bring up neighborhood issues, concerns or ideas for future CPO meetings.

#### Adjournment

## County Boards Seek Candidates

*The following boards are currently seeking applications for new members*

### **Cultural Coalition of Washington County** (7 terms to expire 12/31/09)

Description: CCWC administers distribution of any state funds distributed to Washington County from the Community Cultural Participation Grant Program of the Oregon Cultural Trust. The CCWC distributes funds through a competitive process to Washington County based organizations and artists to address priorities identified in the Washington County Cultural Plan.

No. of Members: 15

Membership: Between nine and fifteen members who reside in Washington County or are members of a business or organization significantly involved in arts, heritage or humanities activities in Washington County. Members may only serve a maximum of two (2) terms consecutively.

Time Commitment: 6-8 meetings per year

Meeting Times: TBD

Term Length: 3 years

### **Fair Board** (1 vacancy, District 1; 3 terms ending: (2) At-Large and District 4 positions to expire 12/31/09)

Description: The Fair Board is comprised of seven members appointed by the Board of County Commissioners. The Fair operation, a division of the County, produces the annual County Fair & Rodeo and manages year-round facilities rented for consumer shows, public expositions and special gathering. The Fair Board meets monthly, develops the Fair Complex's annual operating budget, and provides overall policy direction for the management of Fair Complex activities and facilities. The Fair Complex's day-to-day activities are the responsibility of the Complex Executive Director, who serves at the pleasure of the Fair Board.

No. of Members: 7

Membership: Seven members who reside in the county. County Commissioners from Districts 1, 2, and 3 each appoint one member, the At-Large and District 4 Commissioners each appoint 2 members. Time Commitment: One meeting per month plus additional as necessary

Meeting Times: First Wednesday of every month, 4:30 pm

Term Length: 3 years

### **Public Safety Coordinating Council (PSCC)** (5 terms to expire on 1/1/10)

Description: Coordinates local criminal justice and juvenile justice policy. Makes recommendations for the use of state resources for public safety purposes.

Membership: Twenty-five members including the presiding Circuit Court Judge, various elected officials from the County and cities, state and local law enforcement, the County Administrator and other County managers, lay citizens representing each Commissioner's district, and lay citizens representing minorities (at-large appointment).

Time Commitment: 4 hours or less per month

Meeting Times: Third Friday of every month, 1:30

Term Length: 2 years

### **Rainbow Lane Special Road District Board** (3 terms to expire 12/31/09)

Description: This Board monitors road conditions, contracts with the County to perform maintenance items, manages financial obligations to the County and files an audit report with the State.

Membership: Three members who are residents of the Rainbow Lane Special Road District.

Length of Term: 3 years

**The application deadline is December 1, 2009** or when all vacancies are filled. Applications may be obtained by visiting the website or by calling (503) 846-8685. Descriptions of all the boards can also be found on the Boards and Commissions web site. Boards, committees, and commissions advise the Board of Commissioners on matters of interest to people who live and work in Washington County. Committees themselves do not pass ordinances or establish policy; their purpose is to study issues and make recommendations. Commission members are volunteers appointed by the County Board of Commissioners. Members must be residents of Washington County. Serving on an appointed board or commission is a great way for Washington County residents to participate in decisions that affect them and to learn more about how local government works.

## Caregiving in Tough Times

*Caring for yourself as you care for others*

November is National Family Caregiver Month. Observe this in a special way by enjoying time with other caregivers and learning from professionals dedicated to serving you at the 2009 Washington County Family Caregiver Conference.

**Friday, November 20<sup>th</sup>**, 9AM to 2PM at the Tuality Health Education Center, 334 SE 8<sup>th</sup> Ave, Hillsboro  
**FREE**, including a catered lunch.

The keynote speaker will be the Rev. Larry Hansen, Chaplain and Volunteer Coordinator, Legacy Hopewell House Hospice. Information in panel discussions and breakout sessions include:

- Protect your health
- Prepare your home
- Manage medications safely
- Secure your finances
- Find in-home and community help
- Communicate effectively with others
- Find time for yourself



For more information and to reserve your space, please call 503-615-4676.

---

## 'Green Living Tips'

Changing your behavior to become less demanding on our natural resources can start with simple, small changes in your daily life. Help to save energy and natural resources by putting into action a few more of these tips than you are already doing. Small changes will really add up!

1. Unplug electronics when not in use (phone chargers, coffee makers, treadmills, etc.)
2. Turn off the water when brushing your teeth
3. Recycle and use recycled products
4. Install a programmable thermostat
5. Plant a tree or support [www.americanforests.org](http://www.americanforests.org)
6. Reduce junk mail.
7. Wash clothes in cold water and clean your lint screen
8. Buy in bulk and buy minimally packaged goods
9. Install a low-flow showerhead
10. Buy organic and buy local.



*Washington County Cooperative Recycling Program.*

---

## Thanksgiving Food Safety Hotline

*Guidance and advice to ensure a safe and healthy holiday*



The Oregon State University Extension Service will answer holiday food handling, preparation, serving and storage questions. **Call toll free 1-800-354-7319**

November 16-19 and 23-25  
9:00AM to 4:00PM

## Washington County Animal Services Offers New Shelter Hours

Effective October 17, Washington County Animal Services & Bonnie L. Hays Small Animal Shelter has the following new shelter hours.

### Business and Pet Lost & Found Hours

9 a.m.—6 p.m. Mondays, Tuesdays, and Thursdays—Saturdays  
12 noon—6 p.m. on Wednesdays

### Pet Adoption Hours

11 a.m.—5:30 p.m. Mondays, Tuesdays, and Thursdays—Saturdays  
12 noon—5:30 p.m. Wednesdays



"We're opening our pet lost and found and business operations one hour earlier so it's more convenient for our customers," says Deborah Wood, Animal Services manager.

For more information, stop by and visit Animal Services & the Bonnie L. Hays Small Animal Shelter in Hillsboro, call 503-846-7041 or see our Web site at [www.co.washington.or.us/pets](http://www.co.washington.or.us/pets).

---

## Holiday Safety Tips

Safety is a result of preparedness, not chance. Crime prevention should be practiced throughout the year.

### Crime Prevention Tips When Shopping...

- Shop early to avoid darkness.
- Leave valuable items at home or locked in your trunk. Items left in plain sight tempt would-be thieves to target your vehicle.
- Shop with a friend whenever possible.
- Walk briskly, confidently and directly to your vehicle. Use the main aisles and do not cut between vehicles.
- Watch for anyone who may be following you. This can occur inside as well as outside the store.

### Crime Prevention Tips @ Home...

- After the holidays, don't advertise gifts by the boxes you leave curbside for garbage recycling collection. Flatten and invert the boxes to make the plain sides visible.
- Traveling during the holidays? Consider using a timer to activate your TV/radio and lighting to make it look like you're home.
- Report any suspicious activity to police. The non-emergency telephone number is 503-629-0111.

*Tigard Cityscape, November 2009*

---

## Dollar Works 2

*A financial literacy curriculum*

This financial education course offered in English and Spanish is a four to six week course tailored to client needs. Come learn about:

- Making a spending plan
- Techniques to save \$\$
- Managing credit
- Consumer protection



For more information call 503-821-1118 or email [financialliteracy@oregonstate.edu](mailto:financialliteracy@oregonstate.edu)

## Metro Nature in Neighborhoods Restoration and Enhancement Grants Available

Have an idea that will improve water quality in local rivers and streams? Want to work with your community to improve fish and wildlife habitat? Know kids that like to get their hands dirty? Need money to make it happen? Apply to Metro for a Nature in Neighborhoods restoration and enhancement grant.

Metro's Restoration and Enhancement grant program supports hands-on activities and environmental education programs that protect and contribute to watershed health in the region. The program connects community-minded people to their neighborhoods, natural areas, backyards and beyond.

Proposals are accepted from nonprofit organizations including, but not limited to, an individual, citizen or business group, schools, government agency, or charitable organization with 501(c)(3) status. This requirement can be fulfilled through an agreement with a fiscal agent. Applicants are required to have at least three partners on their team. All projects must take place within Metro's jurisdictional boundary.

Pre-application deadline:

4 p.m. Tuesday, Jan. 19, 2010

Invited full applications will be due 4 p.m. Wednesday, March 10, 2010

Want more information? Need help with your application? Find tips, samples and details at Metro's free grant-writing workshop – 9 a.m. Saturday, Dec. 5. Find out the details at <http://www.oregonmetro.gov/index.cfm/go/by.web/id=24982> or contact Kristin Blyler at 503-797-1834 or [Kristin.Blyler@oregonmetro.gov](mailto:Kristin.Blyler@oregonmetro.gov).

---

## Composting Can Be Simple and Inexpensive

You can start a recycling factory in your own backyard by re-thinking the leaves at your feet and withered tomato plants in the garden as valuable organic materials.

You can put stalks and stems left after harvest, sod, hay, straw and grass clippings to good use (if they haven't been treated with weed killers). Gather them in a pile, add vegetable scraps from the kitchen and you're on your way to making compost that can become fertilizer, soil conditioner and excellent mulch.

Composting does require more work than that, but it doesn't have to be complicated or expensive.

Organic materials will decompose whether you have a fancy bin, container or just a pile on the ground, according to Dan Sullivan, soil scientist with the Oregon State University Extension Service. "Simple piles work well," he said. "Some people prefer containers because they look neater or because it's easier to shield them from marauding pests or pets."

A composting station can be made from old lumber or pallets, mesh fencing or cinder blocks. Some disposal companies offer composting containers free of charge to encourage composting rather than land filling.

For hot (fast) compost, minimum bin size should be at least about half a cubic yard, or about two to three feet wide, two to three feet tall, and three feet deep to retain heat. Sullivan recommends combining two parts bulking agents such as autumn leaves, wood chips, sawdust, hay, wheat straw or corn stalks with one part energy sources such as grass clippings, fruit and vegetable waste or non-woody garden trimmings.

Other hints for a hot compost pile:

- For faster composting, keep the size of the raw materials put into compost to no greater than an inch in diameter.
- Mix the types of raw materials, rather than layering them.
- A large pile holds heat better than a small pile. For hot compost, make the initial pile at least a half cubic yard in volume.
- Keep the pile moist, but not wet.
- Cover the pile in wet winter weather or dry, hot summer weather.
- Turn the pile once a week to aerate it, if you wish.
- Compost ingredients are covered with microorganisms. There is no need to add starters or soil, although some people prefer to use them.

"If you cannot get the pile to heat, it's okay," Sullivan said. "The pile will still break down, but more slowly than hot compost and weed seeds may not all be killed"

## Mark Your Calendar: Free Leaf Disposal & Food Drive

Area residents are encouraged to drop off leaves and donate non-perishable food items for local residents in need from 9 a.m. to 3 p.m. on the following dates:

**Saturday, November 7**  
**Saturday, November 21**

**Saturday, December 5**  
**Saturday, December 12**

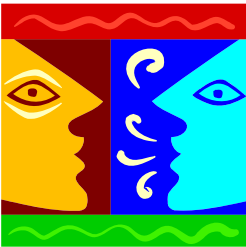
The event will be held in the parking lot of the Public Works Building, 8777 SW Burnham Street, Tigard. Public Works crews prefer that leaves be loose or bagged in paper.

A donation of two non-perishable food items is recommended. Donations will be forwarded to needy Tigard area residents through Tigard's St. Vincent de Paul food distribution facility. For more information, contact Rob Block at 503-718-2607 or [rob@tigard-or.gov](mailto:rob@tigard-or.gov).

### Remember...

Public Works has a small supply of biodegradable plastic leaf bags that can be yours in exchange for three non-perishable food items. Stop by the Public Works Building located at 8777 SW Burnham Street, Tigard. Offer good while supplies last.

*Tigard Cityscape, November 2009*



## CPO Email News and Discussion Group

*CPOTalk*, an email news and discussion group for CPO members, focuses on land-use and livability issues in Washington County. Sign up to receive the latest information on land use and livability in Washington County. Regular postings include articles from local newspapers, state legislative updates, and local/regional/state reports relating to land use and livability.

To sign up for *CPOTalk*, send an email to [cpo.wash.co@oregonstate.edu](mailto:cpo.wash.co@oregonstate.edu) with your name, street address, zipcode and email address. We'll do the rest!

To keep email messages to a minimum, you can elect to receive messages in digest form (one email a day with all messages received within a 24-hour period). For more information, contact Margot Barnett, CPO Coordinator, 503-821-1114 or [margot.barnett@oregonstate.edu](mailto:margot.barnett@oregonstate.edu).

## Climate Change Seminar Series

OSU Extension Service is sponsoring a **free**, public seminar series focusing on aspects of climate change at the Charles D. Cameron Public Service Building, Shirley Huffman Auditorium, 155 N. 1<sup>st</sup> Ave, Hillsboro (**please use the rear entrance**).



- Tuesday, November 10, 2009, 7:00 – 8:30pm  
**Climate Models and Predicting the Future**  
Karen Shell, Ph.D. OSU College of Atmospheric Sciences
- Tuesday, November 17, 2009, 7:00-8:30pm  
**Humidity and the Seasonality of Influenza**  
Jeffrey Shaman, OSU college of Oceanic and Atmospheric Sciences

Please join us for these presentations and discussion.

For more information, contact OSU Extension Service at 503-821-1150, 18640 NW Walker Rd. #1411, Beaverton, OR 97006 or <http://extension.oregonstate.edu/washington/>.

## Use Caution with Fresh Apple Juice or Cider

Apples ready to harvest in the fall make for tasty juice and robust cider, popular treats this time of year. If you plan to squeeze your own apples, however, precautions might be in order.

Windfall apples could be contaminated with bacteria. Raw juice or cider has been linked with E.coli O157:H7. Outbreaks usually happen when fallen fruit comes in contact with domestic or wild animals that frequent an orchard, according to Carolyn Raab, food and nutrition specialist with Oregon State University Extension Service.



An easy way to minimize the risk of illness is to pasteurize raw apple juice before drinking it by heating the juice to a safe 160 degrees. This is a wise precaution for both home-squeezed juice and unpasteurized juice purchased from fruit stands.

"If you don't have a thermometer, heat the juice to simmering (just below the boiling point when bubbles appear)," Raab advised.

"Pasteurization is particularly important if pregnant women, young children, older adults and people with cancer, AIDS and other illnesses that affect the immune system are going to drink the apple juice or cider," Raab said.

For long-term storage, apple juice may be canned in a boiling water canner. Heat the liquid to boiling, put into pint or quart jars and process in the canner for five minutes. (Longer times are needed at altitudes over 1,000 feet.) The juice also can be frozen. Be sure to leave adequate headspace if the juice is frozen in jars.

The OSU Extension publication "Preserving Fruit Juices and Apple Cider" (SP50-455) is available online at: <http://bit.ly/sNNBo>

For more information about safe canning and preserving other foods from apples, such as applesauce, dried apples, pie filling or apple butter, download OSU Extension's fact sheet on preserving apple products at: <http://bit.ly/lqVrbQ>



### **Bonnie L. Hays Small Animal Shelter Thanks Community** *Shelter received some 3,800 pounds of pet food*

The Bonnie L. Hays Small Animal Shelter in Hillsboro recently asked for the community's support. The shelter announced a request for pet food, especially for the kittens and cats.

"The community really responded!" says Deborah Wood, Animal Services manager.

"We want to say thank you! We are so grateful for the outpouring of support. Residents from as far away as Camas in Washington and throughout the Portland metropolitan area donated nearly 3,800 pounds of pet food during the last two weeks.

"Their giving spirit is truly remarkable considering the current economic climate. This just goes to show you how much our community cares for companion animals and values the work that we do," Wood said.

This year the animal shelter will receive about 3,000 cats and kittens. The numbers of kittens admitted to the animal shelter are always highest during the kitten season, which generally runs from May through November.

Almost 100 percent of the food the shelter serves to the pets is donated. Items that the animals also need include topical flea treatment, such as Frontline or Advantage. And, cash is always welcomed. Donations may be brought to the Bonnie L. Hays Small Animal Shelter at 1901 SE 24th Avenue, Hillsboro during regular business hours. (Saturdays 10:00 AM to 5:00 PM; Mondays, Tuesdays, Wednesdays and Fridays 10:00 AM to 6:00 PM; Thursdays noon to 6:00 PM; closed Sundays).

Donations are tax-deductible. For more information on the Bonnie L. Hays Small Animal Shelter's services, adoptable pets and donations, see [www.co.washington.or.us/pets](http://www.co.washington.or.us/pets).

For more information contact: Deborah Wood, Animal Services Manager, 503-846-7148,  
[Deborah\\_Wood@co.washington.or.us](mailto:Deborah_Wood@co.washington.or.us)



Oregon State University Extension Service  
Washington County  
18640 NW Walker Road, Suite 1400  
Beaverton, OR 97006-8927

NONPROFIT ORG.  
US POSTAGE  
PAID  
BEAVERTON OR  
PERMIT NO. 404

**CPO 4K NEWSLETTER  
TIME SENSITIVE**

RETURN SERVICE REQUESTED

## Public Affairs Forum Topics for November 2009

### **Special note: forum is meeting in a new location.**

The meeting location for the forum is at the Tanasbourne Old Spaghetti Factory, 18925 NW Tanasbourne Drive, Hillsboro, OR 97124, 503-617-7614.

For a map go to: <http://washingtoncountyforum.org/time-place>



### **November 16, 2009**

Topic: Water resources and future plans for Washington County.

Speaker: Kevin Hanway, Superintendent of Water for the City of Hillsboro and the Joint Water Commission.

### **November 23, 2009**

Topic: Health Care Reform from a Doctor's point of view.

Speaker: Dr. Evan Saulino, Oregon Academy of Family Physicians.

### **November 30, 2009**

Topic: Oregon College of Art and Craft, a Treasure in the Hills.

Speaker: Bonnie Laing-Malcolmson, President.

---

**Time:** Mondays 11:15 am - 1 pm except on major holidays.

**Location:** Tanasbourne Old Spaghetti Factory, 18925 NW Tanasbourne Drive, Hillsboro, OR 97124, 503-617-7614

**For last minute updates and additional information about the forum, visit:** [www.washingtoncountyforum.org](http://www.washingtoncountyforum.org)

---