

◆ CPO #3 NEWSLETTER ◆

Citizen Participation Organization #3
Serving: West Slope, Raleigh Hills, Garden Home
CPO Newsletters available online at <http://extension.oregonstate.edu/washington/cpo-3-west-sloperaleigh-hillsgarden-home>

Washington County
September 2009



Oregon State University Extension Service supports CPOs through an intergovernmental agreement with Washington County, the sole funder of the CPO program. Extension CPO coordinators provide information on land use and livability issues, resource referrals, and work with CPO members to increase understanding of public policy and decision-making processes.

This newsletter material was developed by representatives of your local CPO and is forwarded to you as part of the Extension Service's support to citizen involvement in local government. Washington County administration, departments, and/or officials claim no responsibility, expressed or implied, for the content of this document.

QUESTIONS? COMMENTS?
Cpo3chair@yahoo.com
503-292-0920

CPO 3 EXECUTIVE COMMITTEE

BJ & Ken Cone	<i>Co-chairs</i>
Bill Frank	<i>Vice Chair</i>
Elena Frank	<i>Secretary</i>
Ben Marcotte	<i>CCI rep.</i>
Charlie Conrad	<i>CCI alternate</i>
Jack Bertell	<i>Past chair</i>
Ben Marcotte	<i>Members at Large</i>
Ruth Robinson	

CPO COORDINATOR

Patt Opdyke, OSU Faculty
Phone: 503-821-1124
Fax: 503-690-3142
Email: patt.opdyke@oregonstate.edu
OSU Washington County Office
18640 NW Walker Road, #1400
Beaverton, OR 97006-8927

To review copies of the **Raleigh Hills-Garden Home Community Plan**, go to www.co.washington.or.us/deptmts/lut/planning/publicat.htm

Citizen Participation Organization 3

Thursday, September 17, 2009
7:00PM

Garden Home Recreation Center
7475 SW Oleson Road

Agenda

- 7:00 Welcome and Introductions**
Approval of June Minutes
Public Safety Update
TVF & R Report
Sheriff's Report
CCI Report
- 7:30 Neighborhood Watch** – Darlene Schnoor, Crime Prevention Specialist from the Washington County Sheriff's Office, will be here to discuss the Neighborhood Watch Program. This program empowers citizens to take a role in making their neighborhoods more secure and to reduce the risk of being victimized by crime. Since our police are unable to watch all areas closely at all times, we must do our part by joining with our neighbors to recognize and report any suspicious activities. By setting up a Neighborhood Watch group in your neighborhood, you will have the opportunity to get to know your neighbors better and thus recognize when something is amiss.
- 8:30 Unfinished Business, Announcements & Neighborhood Meetings-New Business**
- 9:00 Adjourn**

BROTHER, CAN YOU SPARE...A NEWSLETTER?

The CPO program coordinators are looking at ways to reduce printing and postage costs and to make the program more sustainable. To do that we need your help by signing up to receive the newsletter electronically. We call this the **CPO NewsAlert**.

It's simple, just send an email to Sally Yackley cpo.wash.co@oregonstate.edu with your name, street address, zipcode and email address to make the necessary changes. You will receive an email with a link to the CPO website with your current newsletter. Thank you for helping out!



Metro Councilors Launch New Web Page

Beginning September 2009, your Metro Councilor will launch a new web-based page that will take the place of his or her monthly newsletter. When the new page is live, you'll get an e-mail inviting you to check it out. After that you'll be able to choose from a variety of ways to stay in touch, including regular e-mail updates or an RSS feed. (Don't worry if you don't know what an RSS feed is—we'll explain it and help you set it up.)

The new and improved Council news pages will bring you more timely and relevant information. Your Councilor will be able to let you know what's going on at Metro as it's happening. You'll find out about events and activities in your neck of the woods and be invited to participate in the decisions that shape the future of the region.

We're also excited to reduce our use of paper – one more step towards meeting Metro's waste reduction goals. That said, if you would prefer to receive print mailings from your Councilor, please contact us to let us know your interests and we will work to accommodate you.

As we develop and implement these changes, there will be no August newsletter. Thank you for your patience and understanding as we make this transition. Any and all feedback is welcome; please contact Milena Hermansky at 503-797-1540 or milena.hermansky@oregonmetro.gov with questions or comments.

Do Not Flush Medications

Safe Handling of Old/Unwanted Medicine and Pharmaceuticals

Do you know what to do with your unwanted or out-of-date pharmaceuticals and medications? Flushing medication down the toilet or drain is not the answer. This can cause water quality issues. Wastewater treatment plants and septic systems usually do not treat or only partially treat pharmaceuticals, so chemical compounds pass through treatment plants or septic systems to our rivers or groundwater.



First – Hold on to the expired medication until a pharmaceutical take-back program is developed and implemented in Washington County.

Second – Place the medication in your trash which will be sent to the landfill. Landfills in our area have many protective measures in place to prevent chemical seepage into the soil, such as a composite liner and a leachate collection and removal system.

Third – Follow the Oregon Department of Environmental Quality (DEQ) suggested guidelines for disposal outlined below.

DEQ suggests unused medicines be disposed of in the garbage.

- Keep waste pharmaceuticals in their original containers with their labels (remove/conceal any patient information if you have privacy concerns.)
- Tape the lid on the container if it is not childproof and there are children in the home.
- Place waste pharmaceuticals in a plastic, sealable bag, especially if liquid.
- Place waste pharmaceuticals in durable packaging that masks the content, such as a brown cardboard box.
- Place waste pharmaceuticals in the trash as close to garbage pick-up time as possible.

Contact the DEQ hazardous waste duty officer at (503) 229-5263 for more information. Learn more at DEQ's Household Pharmaceutical Waste Disposal fact sheet:

<http://www.deq.state.or.us/lq/pubs/factsheets/sw/HouseholdPharmaceuticalWasteDisposal.pdf>

LAND USE AND DEVELOPMENT APPLICATIONS

CASE FILE TYPE	APPLICANT/LOCATION	PROPOSED ACTION	STATUS
09-149 Type II R5	Terry LaBrosse 6555 SW 86 th Ave	Extension request for a two-parcel partition, "LaBrosse Partition", (casefile no. 07-057-P).	Application received. Status is pending.
09-155 Type II CG	NW Jeep 10555 SW Canyon Rd	Development review for an automobile sales lot.	Approved.
09-174 Type II R5	Kurt and Amy Pearl Alameda 7706 SW Florence Ln.	Determination of a non-conforming use (two dwellings).	Approved.

No public hearing is held unless decision is appealed.

All Type III land use hearings are held at the Charles D. Cameron Public Services Building.

Mailing Address: Washington Co. DLUT, 155 N. First Ave Hillsboro, OR 97124.

<http://washtech.co.washington.or.us/LDS/index.cfm?id=4> Tel: 503-846-8761 Fax: 503-846-2908

Sign up for the Sheriff's Citizen Academy

Learn the inner workings of your Sheriff's Office by attending the 23rd Citizen Academy. Citizen-students receive more than 50 hours of training that consists of classroom and hands-on instruction, interaction with deputies, demonstrations of police equipment, presentations by special response teams, and participation in jail activities. You'll learn the responsibilities and duties of Sheriff's Office personnel, tour criminal justice facilities, including the jail, and much more. New topics this year include presentations by the Robbery/Homicide Unit and our new robot team. Academies are limited to 40 students, so apply online: <http://www.co.washington.or.us/sheriff/citizens/academy.htm> today



Contact darlene_schnoor@co.washington.or.us, extension 2774 for more information

Vol 6 Issue 8 – August 2009



Survey Seeks Information on Tualatin Basin Projects

Metro, Riverkeepers Update Low Impact Development Map and List

Tualatin Riverkeepers and Metro are working together to update a Tualatin Basin map showing projects built using Low Impact Development (LID) best management practices and design.

The "Connect the Drops" survey http://www.surveymonkey.com/s.aspx?sm=cct0Of9gPzvMALcZ5SG_2bHg_3d_3d seeks to collect information about local LID projects in the metropolitan region. The projects will be included in a region-wide map and online national interactive map. As innovators leading implementation of LID practices in the nation, the intent is to showcase projects and facilitate knowledge-sharing among professionals in the field.

Examples of LID projects already identified can be found at the Tualatin Riverkeepers "Connect the Drops" webpage at http://www.tualatinriverkeepers.org/connect_the_drops.html#. Additional regional information about LID practices can be found on Metro's Nature Friendly Development webpage at <http://www.oregonmetro.gov/index.cfm/go/by.web/id=24592>.

Clean Water Services also provides up to three hours of on-site technical assistance to help homeowners create a sustainable stormwater landscape that will reduce polluted runoff from property and maintain the health of local waterways. Information about the program, Clean Water Heroes, can be found at <http://www.cleanwaterservices.org/Residents/ToolsAndTips/CWHProgram.aspx>.

Individuals, businesses and organizations are also invited to include the Connect the Drops Survey link on websites, newsletters, e-zines, tweets and other social media. For more information, contact Brian Wegener, Watershed Watch Coordinator, Tualatin Riverkeepers, at 503-620-7507 or brian@tualatinriverkeepers.org.

Public Affairs Forum Topics for September 2009



Special note: forum is meeting in a new location.

The meeting location for the forum is at the Tanasbourne Old Spaghetti Factory, 18925 NW Tanasbourne Drive, Hillsboro, OR 97124, 503-617-7614.

For a map go to: <http://washingtoncountyforum.org/time-place>

September 14, 2009

Topic: Tualatin Valley Fire and Rescue: Providing Strategic Emergency Response to a Changing Community.

Speaker: Deputy Chief Mike Duyck.

September 21, 2009

Topic: Oregon's 2009 Legislature – How did they do?

Speaker: Jim Moore, Instructor, Department of Politics and Government, Pacific University.

September 28, 2009

Topic: New Seasons: A Northwest Natural Success story.

Speaker: Brian Rohter, CEO.

Time: Mondays 11:15 am - 1 pm except on major holidays.

Location: Tanasbourne Old Spaghetti Factory, 18925 NW Tanasbourne Drive, Hillsboro, OR 97124, 503-617-7614

For last minute updates and additional information about the forum, visit: www.washingtoncountyforum.org

County Boards Seek Candidates

The following boards are currently seeking applications for new members:

Developmental Disabilities Council

Description: The Council functions in an advisory capacity to the Department of Health and Human Services and the Board of Commissioners on program development, planning, monitoring and funding issues.

Membership: Comprised of fifteen members including recipients of service, advocates, and professionals in the field, key referral sources, provider representatives, and lay citizens. Members are residents of the county or have work interests in the county.

Time Commitment: 2-3 hours per month

Term Length: 3 years

Commission on Children and Families (CCF)

Description: The Commission's charge is to help every child reach their full potential and to support families and the community in achieving that goal. Working with many partners, the Commission looks at conditions in the community that affect children and families and recommends planned strategies and funding to improve those conditions.

Members: Fifteen members who represent the geographic and cultural diversity of the county, and bring expertise and knowledge about the developmental stages of childhood and adolescence, and issues facing children and families. At least eight of the members must be lay citizens who do not derive income from children & family services.

Time Commitment: Second Thursday of each month, 7 p.m.

Length of Term: 4 years

The application deadline is **October 6, 2009** or when all vacancies are filled. Applications may be obtained by visiting the website or by calling (503) 846-8685. Descriptions of all the boards can also be found at

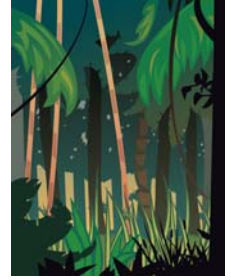
<http://www.co.washington.or.us/CAO/BoardsCommissions/index.cfm> web site.

Boards, committees, and commissions advise the Board of Commissioners on matters of interest to people who live and work in Washington County. Committees themselves do not pass ordinances or establish policy; their purpose is to study issues and make recommendations. Commission members are volunteers appointed by the County Board of Commissioners. Members must be residents of Washington County. Serving on an appointed board or commission is a great way for Washington County residents to participate in decisions that affect them and to learn more about how local government works

Forest Neighbors Field Day & BBQ

Saturday, September 26, 2009 9:00am—2:00pm at the home of Kate & John Eskew, 15604 NW Rock Creek Road.

For first-time and long-time small woodland and property owners who are looking for technical advice and assistance on how to manage their land. OSU Extension Master Gardeners will be on hand to answer any gardening and landscaping questions you have!



Talks & Hands-on Demonstrations:

- Wildlife on your land
- Fire danger during summer
- Basic tree/forestry information
- Invasive weeds
- Reforestation
- Forest Health
- Backyard forest landscapes
- Mapping your property
- Markets & carbon credits
- Inheritance issues
- Conservation easements
- Getting technical assistance

Register at registration@wmswcd.org , Event cost -\$10 per person, \$15 per family (children may attend free)

For more information, contact Scott Gall at scott@wmswcd.org . Special appearance by Forest Dan!

Sponsored by: Oregon Department of Forestry with financial assistance from the USDA Forest Service, OSU Extension Service, Oregon Forest Resources Institute, Oregon Small Woodlands Association, West Multnomah SWCD

You've Been Asking - How To Report a Road Problem or Code Violation

"Who you gonna call? Code Enforcer"

What frequent complaints are dealt with by county agencies?

- **Hazards in the road right-of-way** – Land Use and Transportation Operations, (503) 846-ROAD (846-7623)
<http://www.co.washington.or.us/LUT/Divisions/Operations/request-service.cfm>
- **Violations of Community Development Code** – Land Use and Transportation Current Planning, (503) 846-8761
<http://washtech.co.washington.or.us/LDS/formDocs/CodeViolation.pdf>
- **Inoperable vehicles in the public right-of-way** – Sheriff's Office (503) 846-2524
http://www.co.washington.or.us/sheriff/service/veh_faq.htm
- **Noise or public health issues such as tall weeds, accumulated trash or lack of proper sanitation** – Health and Human Services, Solid Waste (503) 846-8609 <http://www.co.washington.or.us/HHS/SWR/Regulatory/feedback-form.cfm>
- **Animal issues** – Bonnie Hays Small Animal Shelter (503) 846-7041
<http://www.co.washington.or.us/HHS/AnimalServices/AnimalControl/Complaints/index.cfm>

If your complaint is with your neighbor, we suggest you try talking with them first. Sometimes, the problem is solved with a simple discussion. If talking directly doesn't work, consider mediation. The Beaverton Dispute Resolution Center and the Hillsboro Mediation Program are both successful at helping people resolve their differences. The Beaverton Dispute Resolution Center serves Washington County residents who live east of 185th Avenue, including Tigard, Tualatin, and Sherwood. The Hillsboro Mediation Program serves the county west of 185th Avenue, including Cornelius, Forest Grove, North Plains, and Banks.

Tips to Save Money on Groceries

Read labels. The first three ingredients on the label tell you what you are buying. Do you see healthy ingredients listed first, or sugars and fat?

Think before you buy. Don't buy something near the check-out line. Those items cost more. Don't buy something just because you have a coupon. Use coupons only for food you really need.

To learn more about best buys, see the OSU Extension Service fact sheet "Tips for Healthy, Thrifty Meals" at <http://extension.oregonstate.edu/nep/osu-edmaterials#SFD> .

OSU to Launch Web-Based 'Aging Well' Course

"Mastery of Aging Well: A Program for Healthy Living" is a new online course developed by Oregon State University's Division of Outreach and Engagement. It goes live Aug. 25 and is available free of charge at <http://outreach.oregonstate.edu/aging-well>.

Created for aging adults and those who care for them, the five-part series is co-sponsored by AARP Oregon and supported by a U.S. Department of Agriculture grant. The target audience is all Oregonians, particularly those in rural areas. As the course is Web-based, it will also be available worldwide.

"We believe this is the first program of its kind," said Sharon Johnson, OSU Extension Service associate professor in family and community health, and project leader for content development. "The goal was to build an integrated, easy-to-access online series designed specifically with the older learner in mind."

The Mastery program consists of self-paced learning modules narrated by Johnson. Each segment offers practical, research-based information relevant to the challenges many older adults face every day:

- *Memory Difficulties: Should I be Worried?* Covers how memory works, with special focus on how to improve memory and recall.
- *Depression in Later Life.* Offers an overview of depression and aging, and information on what predisposes aging adults to the risk of depression.
- *Medication Jeopardy.* Outlines the risks attached to taking medications and how age influences risk.
- *Food As Medicine?* Is a compelling presentation about eating and aging, with nutritional recommendations for the aging adult.
- *Physical Activity and Exercise in Later Life.* Shows how exercise/activity programs can help aging adults stay independent and physically able.

"AARP is pleased to partner with OSU on this ground-breaking effort," said Joyce DeMonnin, director of public outreach for the group's Oregon office. "Older adults need this type of credible information they can trust and it's great they can get it online wherever and whenever they choose."

All course content is based on material Johnson has presented in face-to-face workshops and refined over the past decade in her role as a field faculty member in the Jackson County OSU Extension Service in Central Point.

A second Mastery program, known as Option 2, will launch in early 2010. It is a greatly expanded version led by an online instructor, with extensive opportunity for student-faculty interaction. Option 2 includes additional learning materials and will be fee-based. The final program, Option 3, is also fee-based and will include instructor interaction, all course materials on DVD and the opportunity to earn a certificate of completion.

The OSU Extension Service and OSU Extended Campus, partner organizations in OSU's Division of Outreach and Engagement, developed the Mastery course collaboratively. It is the first major grant-funded extended learning project created by Outreach and Engagement.

Are You Prepared?

Emergency Preparedness **Tuesday, October 13, 2009**, 6:30 p.m. - 8:00 p.m. See <http://www.co.washington.or.us/cgi/neighbor/watch.pl?searchstring=aug09idx> for more information.

Where: Washington County Sheriff's Office, Law Enforcement Center, Training Rooms B/C. For further information or to register for this class, please call 503-846-2774 or email Darlene_schnoor@co.washington.or.us

Registration deadline is Monday, October 5, 2009.

Neighborhood Watch News, 23 issue_8-August, 2009

Organize a Neighborhood Walk Today

Building a stronger sense of community helps overcome many community barriers to walking. One way to bring neighbors together and expose residents to the experience of walking in their neighborhood is to organize a neighborhood walk. Some examples include:

- A walk to visit a new park or pathway
- A walk to an event (neighborhood fair, local coffee shop)
- A nighttime holiday walk to view decorations
- A fitness walk or walking just for the sake of walking



The simplest way to improve walking in your neighborhood is to get more people walking! There is safety (and comfort) in numbers. As more people start walking:

- You'll get to meet more of your neighbors and thus start building a stronger community
- More people will notice barriers to walking and may add their voice to yours
- Motorists will be more aware of pedestrians and may change their behavior
- There will be more "eyes on the street" to discourage crime and graffiti

While lack of pedestrian facilities may certainly deter people from walking, lack of knowledge about walking routes or how close some popular destinations are may be a large reason why people don't think to walk. Following are some ideas on how to encourage your neighbors to walk.

Safety Tips for Pedestrians:

- Be safe and be seen: make yourself visible to drivers
 - Wear bright/light colored clothing and reflective materials.
 - Carry a flashlight when walking at night.
 - Cross in a well-lit area at night.
 - Stand clear of buses, hedges, parked cars or other obstacles before crossing so drivers can see you.
- Be smart and alert: avoid dangerous behaviors
 - Always walk on the sidewalk; if there is no sidewalk, walk facing traffic.
 - Stay sober; walking while impaired increases your chance of being struck.
 - Don't assume vehicles will stop; make eye contact with drivers; don't just look at the vehicle. If a driver is on a cell phone, they may not be paying enough attention to drive safely.
 - Don't rely solely on pedestrian signals; look before you cross the road.
 - Be alert to engine noise or backup lights on cars when in parking lots and near on-street parking spaces.

For more information, please visit: www.walkinginfo.org

Neighborhood Watch News (Vol_23 issue_8-August, 2009)

Metro Council Approves 30-Year High Capacity Transit Plan

The Metro Council voted 5-to-0 on July 9 to approve the Regional High Capacity Transit System Plan, a 30-year plan to guide investments in light rail, commuter rail, bus rapid transit and rapid streetcar in the Portland metro region. The plan ranks 16 potential high capacity transit corridors in four regional priority tiers, creates a framework for future system expansion prioritization and proposes amendments to the Regional Transportation Plan.

The Regional High Capacity Transit System Plan will now fold into Metro's Regional Transportation Plan being updated through the summer. The Regional Transportation Plan update will determine how much of the region's transportation funding will be allocated to high capacity transit and other types of regional transportation like roads, freight and trails. On Sept. 15, 2009, the updated policies, projects and funding strategies will be released for a 30-day public comment period that will include open houses and hearings.

For more information about the Regional High Capacity Transit System Plan, visit <http://www.oregonmetro.gov/index.cfm/go/by.web/id=137>



Oregon State University Extension Service
Washington County
18640 NW Walker Road, Suite 1400
Beaverton, OR 97006-8927

NONPROFIT ORG.
US POSTAGE
PAID
PORTLAND OR
PERMIT NO 1

**CPO 3 NEWSLETTER
TIME SENSITIVE**

RETURN SERVICE REOUESTED

Stormwater Management: One Backyard at a Time

What if each of us implemented just one of the ideas from this workshop

A **FREE** video-stream workshop will be held **Tuesday, September 15, 9:00am to 11:30 am** at OSU Extension Service, Room 1411E, 18640 NW Walker Road (corner of 185th and Walker). Enter at door marked D1.

This presentation will also be hosted at two other locations:

Tigard Water Building
8777 SW Burnham St., Tigard
Host: Tualatin Riverkeepers
503-620-7507

2701 NW Vaughn St. Ste450, Portland
Host: West Multnomah Soil & Water
Conservation District
Please pre-register at 503-238-4775

Learn how home and business owners, developers, city engineers and mayors are trying green solutions to manage the pollution running to surface and ground waters. See ideas from Whidbey Island, Washington; Bend, Oregon; and Ketchum/Sun Valley Idaho that you may implement in your backyard or town.

Some of the questions we will answer on September 15 include:

- What is a rain garden?
- How big does it need to be?
- What plants should I include?
- Why does that house have plants growing on the roof?
- Does rainwater run off your property into the street?
- Does your neighbor's rainwater run onto your property?



This workshop should interest all gardeners, natural resource educators and students, developers, landscape companies, watershed groups, city and county engineers, planning staff, watershed groups, and caring and interested individuals.

This free workshop comes to us from the video team of Washington State University. Please call or email Sally Yackley (503.821.1128 or email: sally.yackley@oregonstate.edu) to reserve a space at the OSU-hosted workshop (Walker Road location) so that we may plan for handout materials and refreshments.