





### Metro Councilors Launch New Web Page

Beginning September 2009, your Metro Councilor will launch a new web-based page that will take the place of his or her monthly newsletter. When the new page is live, you'll get an e-mail inviting you to check it out. After that you'll be able to choose from a variety of ways to stay in touch, including regular e-mail updates or an RSS feed. (Don't worry if you don't know what an RSS feed is—we'll explain it and help you set it up.)

The new and improved Council news pages will bring you more timely and relevant information. Your Councilor will be able to let you know what's going on at Metro as it's happening. You'll find out about events and activities in your neck of the woods and be invited to participate in the decisions that shape the future of the region.

We're also excited to reduce our use of paper – one more step towards meeting Metro's waste reduction goals. That said, if you would prefer to receive print mailings from your Councilor, please contact us to let us know your interests and we will work to accommodate you.

As we develop and implement these changes, there will be no August newsletter. Thank you for your patience and understanding as we make this transition. Any and all feedback is welcome; please contact Milena Hermansky at 503-797-1540 or [milena.hermansky@oregonmetro.gov](mailto:milena.hermansky@oregonmetro.gov) with questions or comments.

---

### Tigard City Council Passes Request to Withdraw from CPO4B and 4M

Tigard City Council passed a resolution at its August 11 meeting requesting changes to CPO boundaries that would exclude all lands within the Tigard city limits. The Washington County CPO (Citizen Participation Organization) program operates throughout the county, including within incorporated areas.

The resolution requested three actions:

1. All areas within the city limits be removed from the boundaries of CPOs 4B and 4M,
2. Parcels annexed into the city at a future date also be withdrawn from the respective CPOs, and
3. Washington County consider creating a CPO 4T, the boundaries of which would cover all lands within the city limits.

**To review the resolution and related documents in full, go to the City of Tigard website: [http://www.tigard-or.gov/city\\_hall/city\\_council/docs/packets/090811Packet.pdf](http://www.tigard-or.gov/city_hall/city_council/docs/packets/090811Packet.pdf), pages 171-177.**

By way of background, the issue was raised this year in April at a Tigard City Council meeting, at which time the council requested staff to draft a resolution and gather information on the process for CPO boundary changes. In July, the council briefly discussed the proposed draft resolution. Initially the proposed resolution was scheduled to return to the Tigard City Council on July 14<sup>th</sup> as a Consent Agenda item. Councilor Marland Henderson requested that it be pulled from the Consent Agenda and placed on the Business Agenda for discussion; as a result, the resolution was considered at the August 11<sup>th</sup> City Council meeting.

If you would like further information on the council's decision, you can contact Cathy Wheatley, City Recorder, (503-639-4171 [cathy@tigard-or.gov](mailto:cathy@tigard-or.gov)) or Liz Newton, Assistant City Manager, (503-718-2412 [liz@tigard-or.gov](mailto:liz@tigard-or.gov)).

---

### Metro GreenScene, Your Guide to Great Places and Green Living

GreenScene provides a comprehensive calendar of nature activities, gardening workshops and volunteer ventures offered by Metro and more than 100 other organizations. Click here to view the calendar:

<http://calendar.oregonmetro.gov/events/?l=4>.

To sign up to receive the Metro GreenScene by email go to <http://www.oregonmetro.gov/index.cfm/go/by.web/id=29030>

## LAND USE AND DEVELOPMENT APPLICATIONS

CASE FILE TYPE	APPLICANT/LOCATION	PROPOSED ACTION	STATUS
09-100 Type II R18-24	Laurie Huskey 9505 SW Hall Blvd.	Extension of Casefile 06-584-S/D (R)	Application received. Status is pending.
09-265 Type II R5	Jason Gillies 9715 SW 90 <sup>th</sup> Ave	Preliminary plat review for a 2-parcel partition, "Gillies Partition".	Application received. Public comment period 9/2/09 – 9/16/09.
09-288 Type II R5	David White 8008 SW Pine St	Review for a temporary health hardship dwelling.	Application received. Public comment 9/4/09 – 9/18/09.

**Type II land use applications have a 14-day public comment period. No public hearing is held unless the decision is appealed. All Type III land-use hearings are held at the Charles D. Cameron Public Services Building.**

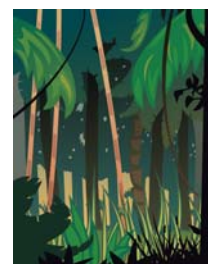
Mailing Address: Washington Co., DLUT, 155 N. First Ave Hillsboro, OR 97124.

<http://washtech.co.washington.or.us/LDS/index.cfm?id=4> Tel: 503-846-8761 Fax: 503-846-2908.

### Forest Neighbors Field Day & BBQ

Saturday, September 26, 2009 9:00am—2:00pm at the home of Kate & John Eskew, 15604 NW Rock Creek Road.

For first-time and long-time small woodland and property owners who are looking for technical advice and assistance on how to manage their land. OSU Extension Master Gardeners will be on hand to answer any gardening and landscaping questions you have!



#### Talks & Hands-on Demonstrations:

- Wildlife on your land
- Fire danger during summer
- Basic tree/forestry information
- Invasive weeds
- Reforestation
- Forest Health
- Backyard forest landscapes
- Mapping your property
- Markets & carbon credits
- Inheritance issues
- Conservation easements
- Getting technical assistance

**Register at [registration@wmswcd.org](mailto:registration@wmswcd.org) , Event cost -\$10 per person, \$15 per family (children may attend free)**

For more information, contact Scott Gall at [scott@wmswcd.org](mailto:scott@wmswcd.org)

Special appearance by Forest Dan!

Sponsored by: Oregon Department of Forestry with financial assistance from the USDA Forest Service, OSU Extension Service, Oregon Forest Resources Institute, Oregon Small Woodlands Association, West Multnomah SWCD.

### Are You Prepared?

Emergency Preparedness **Tuesday, October 13, 2009**, 6:30 p.m. - 8:00 p.m. See

<http://www.co.washington.or.us/cgi/neighbor/watch.pl?searchstring=aug09idx> for more information.

**Where:** Washington County Sheriff's Office, Law Enforcement Center, Training Rooms B/C. For further information or to register for this class, please call 503-846-2774 or email [Darlene\\_schnoor@co.washington.or.us](mailto:Darlene_schnoor@co.washington.or.us)

**Registration deadline** is Monday, October 5, 2009.

*Neighborhood Watch News, 23 issue\_8-August, 2009*

## County to Consider Temporary Discount of Transportation Development Tax

The Washington County Board of Commissioners will soon consider adopting a temporary discount for the Transportation Development tax. This methodology adjustment could affect development on all properties within Washington County, including urban unincorporated, within cities, and rural areas. The purpose of the proposed temporary discount is to provide a temporary reduction in the transportation Development Tax within Washington County due to the current economic situation.

The Board will consider the proposed methodology adjustment at their regularly scheduled public hearing on October 20, 2009. Public testimony about the proposed Transportation Tax Temporary Discount may be submitted in writing prior to or at the hearing. Oral testimony may also be provided at the hearing. Written testimony may be mailed to the Board in advance of the hearing in care of the Long Range Planning Division, 155 N. First Ave, Suite 350-14, Hillsboro, OR 97124, or faxed to 503-846-4412. **They are unable to accept e-mail as public testimony.**

If you have any questions about the proposed Transportation Development Tax temporary discount, please contact Steve L. Kelley at 503-846-3519. A memorandum explaining the proposed reduction and a copy of the methodology are available on-line at:

[www.co.washington.or.us/LUT/Divisions/LongRangePlanning/PlanningPrograms/TransportationPlanning/transportation-development-tax.cfm](http://www.co.washington.or.us/LUT/Divisions/LongRangePlanning/PlanningPrograms/TransportationPlanning/transportation-development-tax.cfm).

---

## Registration Opens for Master Gardener Online Training

A limited number of places are open for the Oregon State University Master Gardener online course (Option One) that runs 12 weeks, from Sept. 7 to Dec. 14. Participants can earn a Certificate of Home Horticulture in the online course and are not required to volunteer.

"Participants become actively engaged in the course," said Gail Langellotto, OSU Extension urban and community horticulture specialist and statewide coordinator of the Master Gardener Program. Cost is \$490, and space is limited to 75 individuals.

"By completing assignments and interacting with instructors and peers in an online environment, students learn about proper gardening techniques and sustainable gardening practices at a time and in a format that suits their schedule."

Option Two offers training to become a certified Master Gardener and to earn the Master Gardener badge. In addition to the basic training course, participants are required to put in 40–70 hours of volunteer work at their local OSU Extension office. The course begins January 2010 and costs \$390. Registration for Option Two will open in late fall for the course that begins in January 2010.

"Certified OSU Master Gardeners are highly trained volunteers who share the art and science of sustainable gardening and OSU resources in home horticulture with the citizens of Oregon," Langellotto said. More than 3,500 people across the state have become Master Gardeners through the OSU program.

Topics included in the Master Gardener basic training course include botany and entomology; integrated pest management and pesticide safety; soils, fertilizers and composting; ornamental, herbaceous plants and woody plants; vegetable, indoor and container gardening; sustainable landscaping; and plant pathology.

Registration for either Option One or Option Two can be made online at: <http://ecampus.oregonstate.edu/mastergardener>

The Master Gardener online course is offered by the OSU Extended Campus (Ecampus) and Extension Service.

---

## 2009 Propagation Workshop

*Washington County Master Gardeners Association*

**Saturday, September 26<sup>th</sup>**, 9:30 Am – Noon, Washington County Fair Complex, Cloverleaf Entrance , 28th Street, Hillsboro.

Join us for a free, fun, hands on program that will teach you the basics of plant propagation. Take home plant starts and a mini greenhouse made from recycled materials. Workshop is great for gardeners of all ages and experience levels. See [www.wcmga.info](http://www.wcmga.info) – events for more details

## OSU to Launch Web-Based 'Aging Well' Course

"Mastery of Aging Well: A Program for Healthy Living" is a new online course developed by Oregon State University's Division of Outreach and Engagement. It goes live Aug. 25 and is available free of charge at <http://outreach.oregonstate.edu/aging-well>.

Created for aging adults and those who care for them, the five-part series is co-sponsored by AARP Oregon and supported by a U.S. Department of Agriculture grant. The target audience is all Oregonians, particularly those in rural areas. As the course is Web-based, it will also be available worldwide.

"We believe this is the first program of its kind," said Sharon Johnson, OSU Extension Service associate professor in family and community health, and project leader for content development. "The goal was to build an integrated, easy-to-access online series designed specifically with the older learner in mind."

The Mastery program consists of self-paced learning modules narrated by Johnson. Each segment offers practical, research-based information relevant to the challenges many older adults face every day:

- *Memory Difficulties: Should I be Worried?* Covers how memory works, with special focus on how to improve memory and recall.
- *Depression in Later Life.* Offers an overview of depression and aging, and information on what predisposes aging adults to the risk of depression.
- *Medication Jeopardy.* Outlines the risks attached to taking medications and how age influences risk.
- *Food As Medicine?* Is a compelling presentation about eating and aging, with nutritional recommendations for the aging adult.
- *Physical Activity and Exercise in Later Life.* Shows how exercise/activity programs can help aging adults stay independent and physically able.

"AARP is pleased to partner with OSU on this ground-breaking effort," said Joyce DeMonnin, director of public outreach for the group's Oregon office. "Older adults need this type of credible information they can trust and it's great they can get it online wherever and whenever they choose."

All course content is based on material Johnson has presented in face-to-face workshops and refined over the past decade in her role as a field faculty member in the Jackson County OSU Extension Service in Central Point.

A second Mastery program, known as Option 2, will launch in early 2010. It is a greatly expanded version led by an online instructor, with extensive opportunity for student-faculty interaction. Option 2 includes additional learning materials and will be fee-based. The final program, Option 3, is also fee-based and will include instructor interaction, all course materials on DVD and the opportunity to earn a certificate of completion.

The OSU Extension Service and OSU Extended Campus, partner organizations in OSU's Division of Outreach and Engagement, developed the Mastery course collaboratively. It is the first major grant-funded extended learning project created by Outreach and Engagement.

---

## Tips to Save Money on Groceries

Read labels. The first three ingredients on the label tell you what you are buying. Do you see healthy ingredients listed first, or sugars and fat?

Think before you buy. Don't buy something near the check-out line. Those items cost more. Don't buy something just because you have a coupon. Use coupons only for food you really need.

To learn more about best buys, see the OSU Extension Service fact sheet "Tips for Healthy, Thrifty Meals" at <http://extension.oregonstate.edu/nep/osu-edmaterials#SFD>.

## **Safe Handling of Old/Unwanted Medicine and Pharmaceuticals**

Do you know what to do with your unwanted or out-of-date pharmaceuticals and medications? Flushing medication down the toilet or drain is not the answer. This can cause water quality issues. Wastewater treatment plants and septic systems usually do not treat or only partially treat pharmaceuticals, so chemical compounds pass through treatment plants or septic systems to our rivers or groundwater.



**First** – Hold on to the expired medication until a pharmaceutical take-back program is developed and implemented in Washington County.

**Second** – Place the medication in your trash which will be sent to the landfill. Landfills in our area have many protective measures in place to prevent chemical seepage into the soil, such as a composite liner and a leachate collection and removal system.

**Third** – Follow the Oregon Department of Environmental Quality (DEQ) suggested guidelines for disposal outlined below.

**DEQ suggests unused medicines be disposed of in the garbage.**

- Keep waste pharmaceuticals in their original containers with their labels (remove/conceal any patient information if you have privacy concerns.)
- Tape the lid on the container if it is not childproof and there are children in the home.
- Place waste pharmaceuticals in a plastic, sealable bag, especially if liquid.
- Place waste pharmaceuticals in durable packaging that masks the content, such as a brown cardboard box.
- Place waste pharmaceuticals in the trash as close to garbage pick-up time as possible.

Contact the DEQ hazardous waste duty officer at (503) 229-5263 for more information. Learn more at DEQ's Household Pharmaceutical Waste Disposal fact sheet:

<http://www.deq.state.or.us/lq/pubs/factsheets/sw/HouseholdPharmaceuticalWasteDisposal.pdf>

*Washington County Cooperative Recycling Program*

---

## **A Message from the Sheriff**



On behalf of the Washington County Sheriff's Office, please accept my appreciation of each neighborhood that participated in this year's National Night Out events around Washington County. I am certain that there were many friendships made, partnerships and alliances forged, and commitments rekindled, all because of three or four hours spent getting to know our neighbors and local law enforcement personnel.

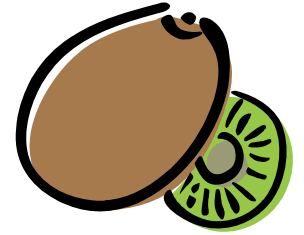
This is also an excellent opportunity for our Deputies and Sheriff's Office staff to become more familiar with our neighborhoods and be better acquainted with the people we have been entrusted to serve and protect.

Again, thank you to all who participated, for helping to foster these relationships, and supporting our mission to act as Conservators of the Peace in Washington County.

*Neighborhood Watch News (Vol\_23 issue\_9-September, 2009)*

## New Kiwifruit Variety Grows Well in Oregon

A new breed of hardy kiwifruit is becoming popular in Oregon as it becomes a commodity for commercial growers and delight for home gardeners.



The relatively new kiwifruit has a smooth skin and is about one inch long, according to Oregon State University Extension berry crops professor Bernadine Strik.

"It's smaller and rather different looking than the traditional 'fuzzy' kiwifruit, but it looks the same on the inside, has a nice tropical flavor and is high in vitamin C," Strik said. "More important for the Oregon growing season is that the new variety produces fruit in mid- to late-September, whereas fuzzy kiwifruit will not ripen on the vine in Oregon."

Drawbacks exist, however, and Strik recommends that growers and home gardeners protect newly emerging shoots from frost in late winter. "Growers need to use overhead irrigation to protect plants after buds appear, perhaps as soon as early March," she said.

Hardy kiwifruit is well-suited to the home garden, Strik said, adding that Oregonians may want to download more information from the OSU Extension publication, "Growing Kiwifruit," which is available online at <http://extension.oregonstate.edu/catalog/pdf/pnw/pnw507.pdf>

The publication is based on hardy kiwifruit field trials conducted at OSU's North Willamette Research and Extension Center in Aurora. It provides descriptions of kiwifruit varieties, their performance and characteristics such as ripening date, fruit weight and how well they grew in Oregon. The 26-page publication was written for both commercial growers and home gardeners.

Commercial growers will be interested in chapters on establishing and maintaining a kiwifruit orchard. They include sections on site selection and preparation, vineyard planning, irrigation, fertilization and trellising, as well harvest, handling and storage.

"New acres of hardy kiwifruit are growing commercially in Oregon," Strik said. "We have between 80 and 100 acres of this crop, most of which is marketed fresh." She notes that hardy kiwifruit requires male plant(s) as well as fruit-producing female plant(s). Check out the publication for more information.

---

## You've Been Asking - How To Report a Road Problem or Code Violation

*"Who you gonna call? Code Enforcer"*

What frequent complaints are dealt with by county agencies?

- **Hazards in the road right-of-way** – Land Use and Transportation Operations, (503) 846-ROAD (846-7623) <http://www.co.washington.or.us/LUT/Divisions/Operations/request-service.cfm>
- **Violations of Community Development Code** – Land Use and Transportation Current Planning, (503) 846-8761 <http://washtech.co.washington.or.us/LDS/formDocs/CodeViolation.pdf>
- **Inoperable vehicles in the public right-of-way** – Sheriff's Office (503) 846-2524 [http://www.co.washington.or.us/sheriff/service/veh\\_faq.htm](http://www.co.washington.or.us/sheriff/service/veh_faq.htm)
- **Noise or public health issues such as tall weeds, accumulated trash or lack of proper sanitation** – Health and Human Services, Solid Waste (503) 846-8609 <http://www.co.washington.or.us/HHS/SWR/Regulatory/feedback-form.cfm>
- **Animal issues** – Bonnie Hays Small Animal Shelter (503) 846-7041 <http://www.co.washington.or.us/HHS/AnimalServices/AnimalControl/Complaints/index.cfm>

If your complaint is with your neighbor, we suggest you try talking with them first. Sometimes, the problem is solved with a simple discussion. If talking directly doesn't work, consider mediation. The Beaverton Dispute Resolution Center and the Hillsboro Mediation Program are both successful at helping people resolve their differences. The Beaverton Dispute Resolution Center serves Washington County residents who live east of 185th Avenue, including Tigard, Tualatin, and Sherwood. The Hillsboro Mediation Program serves the county west of 185th Avenue, including Cornelius, Forest Grove, North Plains, and Banks.



Oregon State University Extension Service  
Washington County  
18640 NW Walker Road, Suite 1400  
Beaverton, OR 97006-8927

NONPROFIT ORG.  
US POSTAGE  
PAID  
BEAVERTON OR  
PERMIT NO 404

**CPO 4M NEWSLETTER  
TIME SENSITIVE**

RETURN SERVICE REQUESTED

## Public Affairs Forum Topics for September 2009

### Special note: forum is meeting in a new location.

The meeting location for the forum is at the Tanasbourne Old Spaghetti Factory, 18925 NW Tanasbourne Drive, Hillsboro, OR 97124, 503-617-7614.

For a map go to: <http://washingtoncountyforum.org/time-place>



### September 21, 2009

Topic: Oregon's 2009 Legislature – How did they do?

Speaker: Jim Moore, Instructor, Department of Politics and Government, Pacific University.

### September 28, 2009

Topic: New Seasons: A Northwest Natural Success story.

Speaker: Brian Rohter, CEO.

---

**Time:** Mondays 11:15 am - 1 pm except on major holidays.

**Location:** Tanasbourne Old Spaghetti Factory, 18925 NW Tanasbourne Drive, Hillsboro, OR 97124, 503-617-7614

**For last minute updates and additional information about the forum, visit:** [www.washingtoncountyforum.org](http://www.washingtoncountyforum.org)

---