

◆ CPO #7 NEWSLETTER ◆

Citizen Participation Organization #7

Serving: Rock Creek ◆ Bethany ◆ West Union ◆ Neighborhoods south to Baseline Rd.

CPO Newsletters available on the web at <http://extension.oregonstate.edu/washington/cpo-7-sunset-westrock-creekbethany>

Washington County

March 2009



Oregon State University Extension Service supports CPOs through an intergovernmental agreement with Washington County, the sole funder of the CPO program. Extension CPO coordinators provide information on land use and livability issues, resource referrals, and work with CPO members to increase understanding of public policy and decision-making processes.

This newsletter material was developed by representatives of your local CPO and is forwarded to you as part of the Extension Service's support to citizen involvement in local government. Washington County administration, departments, and/or officials claim no responsibility, expressed or implied, for the content of this document.

CPO 7 STEERING COMMITTEE

Andy Miller *Chair*
Cpo7chair@gmail.com

Marty Moyer *V. Chair, CCI*
Mary Beth Cottle *CCI Rep*
Barb Sonniksen *V. Chair, Bethany*
Lee Going *Recording Secty*
Dawn Bonder *Corresponding Secty*
Mary Manseau *Past Chair*
Andy Miller, Mary Manseau *CCI Alts*

CPO COORDINATOR

Margot Barnett, OSU Faculty
Phone: 503-821-1114
Fax: 503-690-3142
Email: margot.barnett@oregonstate.edu
OSU Washington County Office
18640 NW Walker Road, #1400
Beaverton, OR 97006-8927

To review the Bethany and Sunset West Community Plans go to <http://www.co.washington.or.us/deptmts/lut/planning/publicat.htm>

Citizen Participation Organization 7

Monday, March 2, 2009
7:00 p.m.

OSU Extension Office
18640 NW Walker Road, Beaverton
Entrance D1 Room # 1411 East
(Enter parking lot from 1st light south of Walker on 185th)

AGENDA

- 7:00 PM** **Welcome**
- 7:10 PM** **Alwin Turiel, the Long Range Planning Supervisor for the City of Hillsboro** will brief CPO 7 on Hillsboro's Aspirations presented to the Washington County Reserves Coordinating Committee (WCRCC).
- 7:40 PM** **Henry Reimann, a Lieutenant with the City of Hillsboro Police Department** will brief CPO 7 on the Photo Red Light project, which includes the intersection of 185th and Evergreen.
- 8:10 PM** **Don Odermott, the Transportation Planning Engineer for the City of Hillsboro** will provide an update on future High Capacity Transit routes in this area, possible re-zoning of the OHSU/Amber Glen area, and answer any other questions you may have about transit issues in the area.
- 8:40 PM** **Land Use Updates**
- 8:50 PM** **Announcements and Poll on Future Topics**
- 9:00 PM** **Adjourn**



Our Economic Interests, Our Quality of Life

Metro's responsibility for urban growth management includes forecasting future needs for jobs and housing. I have previously described how Metro is working closely with our local city and county governments as well as business, environmental, land use and social issue interest groups on our next round of urban growth management decisions, a program we call 'Making the Greatest Place'¹. In this program, Metro is utilizing new tools and the latest techniques to perform analysis and understand trends, including employment and economic trends. This involves national and regional research, plus focus groups and roundtables of businesses in our region, to collect, review and understand new information and perspectives. I believe this analysis is very significant for all of us.

Our quality of life here is the envy of many in the U.S.A., and to me a job is the anchor for a great quality of life. Despite the current challenging economic times, we are doing better than many. We all want good homes, and good jobs to support our interests and those of our families. But what does the future hold? How will we ensure good jobs for our children and their children?

Over the last thirty years, many industries including high technology/electronics, athletic apparel and equipment industries helped transform the economic landscape of the Portland metropolitan area. Here in Washington County, particularly in Hillsboro, there is great hope that the solar industry will help forge a bright and prosperous future over the next few decades. For example, SolarWorld² (located in Hillsboro on Evergreen Road, with a 480,000-square-foot manufacturing plant on a 94 acre property) will produce solar photovoltaic (PV) silicon products, helping to establish the newest cluster in our traded sector ecosystem, providing products to our nation as well as to the global market.

But jobs benefit more than our families. The money employees and employers make also helps run our beautiful State of Oregon. Personal income tax paid by employees, sometimes called the "individual" income tax, is the state of Oregon's largest source of revenue. For 2007-09 (the current 2 year state budget), this revenue is estimated to be \$11.1 billion, or 86 percent of General Fund revenues³. The corporation income tax is the second largest source of revenue for the state General Fund. For 2007-09, this revenue is estimated to be \$857 million, or 6.7 percent of General Fund revenues³.

Here in Washington County, we have many fine businesses, and our employees generate 16% of the state income tax revenue for the state³, over 13% of the state general fund. The top three counties (Multnomah, Washington and Clackamas) together provide 49% of the state income tax revenue⁴. Thank you to our employers and employees for creating products for the world markets, valuable family wage jobs, and tax income to help run the important services of our state, contributing to the quality of life that we each experience and enjoy here!

As we look ahead in the coming decades, what employers will provide for our future? The lands currently inside the urban growth boundary are expected to accommodate housing plus employment industry growth for the next 20 years⁵. The urban and rural reserve program is looking 20-30 years beyond that. My colleagues and I on the Metro Council are working collaboratively with the local elected officials at the city government and county government levels to estimate what the future might hold for our urban growth needs, including businesses and industry. What jobs might your children and grandchildren hold for the benefits of themselves and their families? There are no certainties, rather ranges of possibilities. Together we will be choosing what potential future we are willing to plan for and work towards.

Source notes:

1 – www.oregonmetro.gov/greatestplace

2 – www.solarworld-usa.com

3 - www.oregon.gov/DOR/STATS/exp09-11-toc.shtml

4 - www.oregon.gov/DOR/STATS/101-406-08-toc.shtml

5 – Most recent decisions of 2002-2004. www.oregonmetro.gov/index.cfm/go/by.web/id=277 (or search 'Urban Growth Boundary' at www.oregonmetro.gov)

-Kathryn Harrington

Kathryn Harrington represents District 4 includes Northern Washington County, Cornelius, Hillsboro, Forest Grove, Northwest Beaverton, Bethany, Aloha, Bonny Slope, Raleigh Hills, West Slope, Cedar Mill and Cedar Hills. Councilor Harrington can be reached at 503-797-1553 or send e-mail to Kathryn.harrington@oregonmetro.gov.

SBA Offers Disaster Assistance to Oregon Small Businesses Economically Impacted by Severe Winter Storms

Darryl Hairston, Acting Administrator of the U. S. Small Business Administration (SBA), today announced that the SBA is making low-interest Economic Injury Disaster Loans available to small businesses economically impacted by severe winter storms in Oregon that occurred from December 14, 2008 through January 4, 2009.

SBA is offering working capital loans of up to \$2 million at an interest rate of 4 percent with terms up to 30 years. "These loans may be used to pay fixed debts, payroll, accounts payable and other bills that can't be paid because of the disaster's impact. These loans can provide vital economic assistance to small businesses affected by the severe winter storms to help overcome the temporary financial impacts they are experiencing," Judd said.

SBA will provide information on working capital loans at the Gateway Children's Center Service Building, 10317 E. Burnside Street, through Wednesday, March 4th. Office hours are 9:00am – 6:00pm.

Applicants may also apply online using the Electronic Loan Application (ELA) via SBA's secure Web site at <https://disasterloan.sba.gov/ela>.

Disaster loan information and application forms may also be obtained from SBA's Customer Service Center by calling toll-free (800) 659-2955, emailing disastercustomerservice@sba.gov, or visiting SBA's website at www.sba.gov/services/disasterassistance. Hearing impaired individuals may call (800) 877-8339.

The deadline to apply for these loans is **November 12, 2009**.

Please see the entire article on the OSU Extension Service website: <http://extension.oregonstate.edu/washington/breaking-news>



OSU Web Site Helps People Find Help When Recession Hits Home

Oregonians who are finding it hard to make ends meet during these tough economic times have a new resource at their fingertips that quickly links them to key assistance programs with the click of a mouse.

In an effort to compile useful resources in one easy-to-access place, the Oregon State University Extension Service has created a Web site, "Finding Help in Tough Times," containing links to agencies like the Federal Trade Commission and Oregon's Employment, Education and Human Services departments. These sites help people find information about filing for unemployment, finding a job, avoiding foreclosure, staying mentally and physically healthy, and applying for food stamps, nutrition programs and free or lower-priced school meals.

"The Web site highlights health and social service resources available to people in need," said Sally Bowman, a specialist with OSU Extension who was involved with creating the Web site. "It's aimed at individuals and families who need help, such as people who've had the rug pulled out from under them in bankruptcy, foreclosure or layoffs."

The site is at: http://extension.oregonstate.edu/emergency/tough_times.php .

This new Web site also links to a site provided by the Cooperative Extension System, a nationwide, noncredit educational network, that contains advice on how to weather the economic storm financially and psychologically. Articles on that site offer tips on topics that include how to manage debt, avoid eviction and foreclosure, determine one's net worth, engage in family activities on a budget, and cope with the stress and anger that may follow a job loss.

LAND USE AND DEVELOPMENT APPLICATIONS

CASE FILE TYPE	APPLICANT/LOCATION	PROPOSED ACTION	STATUS
08-296 Type II To: R18-24	Divot Development SW 204 th Terrace	Development review for “Veridian Ridge Apartments,” 144 attached units in 6 buildings and for recreation Bldg all in a transit-oriented district.	Appealed. Status is pending.
08-336 Type II R6	West Hills Development 13525 NW Thompson Rd	Preliminary review of a 12-lot subdivision, “Cascadian Heights No. 6”	Hold.
08-414 OC Type II	Bama Design 15402 NW Cornell Rd.	Development review approval for a new 3-story, approximately 10,000 sq. foot medical office building and 2 hardship relief variance requests: a 20% reduction in the side yard setback and front yard setback.	Application received. Status is pending.
08-418 R6 Type II	Tomas Yoo 14655 NW West Union Rd.	Home occupation permit renewal request for a tutoring business, “Oregon Academy”.	Approved.
09-027 Type II R6	KB Trees, Inc. 4550 NW Kaiser Rd	Preliminary review for a 7-lot subdivision, “Bethany Ridge Subdivision” and development review for a single duplex unit on 2 of the lots.	Application received. Awaiting public notice.

Type II land use applications have a 14 day public comment period. No public hearing is held unless decision is appealed. All Type III land use hearings are held at the Washington County Public Services Building.
Mailing Address: Washington Co. DLUT, 155 N. First Ave Hillsboro, OR 97124.

Want to Know What’s Happening in Your Community?

Are you interested in receiving regular emails from CPO 7 on

- Late-breaking land development applications?
- Neighborhood review meetings?
- Notices received from Washington County and the cities of Beaverton and Hillsboro?



If so, email CPO 7 past chair Mary Manseau at pastcpo7chair@gmail.com and she will make sure you receive the updates.

Washington County Master Gardeners™ 2009 Speakers

Capital Center, 18640 NW Walker Road, #1400, Beaverton, OR 97006

Telephone: 503-821-1151, Presentations from 7:15 – 8:15PM

<http://extension.oregonstate.edu/washington/washington-county-oregon-master-gardener%25E2%2584%25A2-association-home-0>

March 5, 2009

Art in the Garden

Nancy Goldman

Hardy Plant Society of Oregon

April 2, 2009

Peonies

Therese Sprauer

Brooks Gardens

May 7, 2009

Heirloom Vegetables

Michael Stucky

Millennium Farms

June 4, 2009

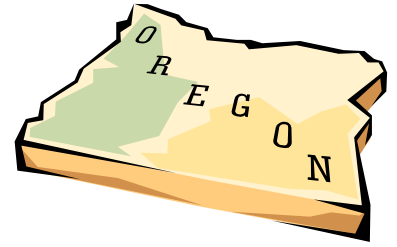
New Plants for 2009

Mary Ludlum

Farmington Gardens



Libraries in Washington County Celebrate Oregon's Sesquicentennial with Oregon Reads 2009



What if 50,000 Oregonians read the same book in Oregon's 150th Birthday year?

The Washington County Cooperative Library Services wants to find out! Oregon Reads 2009 is a community reads program that is taking place in nearly every public library and in every county in Oregon during the state's sesquicentennial (150th year of statehood), through April of 2009.

All three selected titles are books with a uniquely Oregon focus - written by Oregon authors: stories conveying an Oregon experience, approachable by readers throughout the state, as well as by those with varying reading levels. Several of the libraries in Washington County will host the three authors: Lauren Kessler (*Stubborn Twig*), Virginia Euwer Wolff (*Bat 6*) and Deborah Hopkinson (*Apples to Oregon*). We invite you to mark your calendar for one or more of the entertaining and educational Oregon Reads events. Following is a listing of the details for the next three weeks of events in Washington County libraries: February 13 - March 8.

For additional background on the selected books, key participants and celebrations planned in your community during our 150th year of statehood to be held in Washington County we invite you to visit the Oregon Reads web site at.

<http://www.wccls.org>. The 14 WCCLS member libraries are offering over 90 local events throughout Washington County - so by participating in this exciting Oregon Reads program focusing on the Oregon experience you will become a part of Oregon's history.

Fri, Feb. 27 at 10:30 a.m. Cedar Mill Library

Owl Book Group *Stubborn Twig* Discussion Group for adults

Sat., March 7 at 1 p.m. Cornelius Library

Origami* (All ages). Learn to create a beautiful and intricate work of art through the traditional Japanese art of paper folding.

Sun., March 8, 2 p.m. Hillsboro Main Library

Portland Japanese Garden Presentation (All ages). Learn about the wonders of the Portland Japanese Garden. Admission tickets to the Garden will be given away as door prizes.

For a calendar of additional Oregon Reads events taking place in Washington County libraries through April 18th - visit www.wccls.org/oregon_reads.

The **Washington County Cooperative Library Services (WCCLS)** includes: Banks Public Library, Beaverton City Library, Cedar Mill Community Library, Cedar Mill Community Library @ Bethany, Cornelius Public Library, Forest Grove City Library, Garden Home Community Library, Hillsboro Public Libraries (Main and Shute Park), North Plains Public Library, Sherwood Public Library, Tigard Public Library, Tualatin Public Library, and West Slope Community Library.

TriMet Open House

Share your comments on proposed service cuts and Fareless Square changes

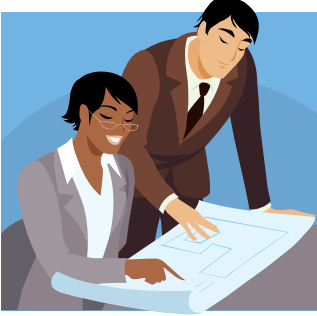
TriMet is currently seeking public comments on several important transit issues, including proposed service cuts and possible changes to Fareless Square.

Open House meeting time and location:

Beaverton City Hall/Council Chambers, 4755 SW Griffith Dr.
March 3rd, 4-7 p.m.

If you can't attend, you can learn more about the proposed changes online and share your comments by email, phone or mail: TriMet-MK2, 4012 SE 17th Ave., Portland, OR 97202, I comments@trimet.org, 503-962-5806, Fax 503-962-6469 TTY 503-238-5811 (7:30 a.m. to 5:30 p.m. weekdays)

For more information see: <http://trimet.org/openhouse/index.htm>



Project Update

Urban and Rural Reserves Planning in Washington County

The ultimate goal of urban and rural reserves planning is finding an efficient approach to manage substantial future growth in our region. It also will provide a level of certainty regarding where growth will occur and what areas will be protected from urbanization for the next 40 – 50 years. County commissioners and staff, working in concert with our cities, stakeholder groups, and our regional partners (Metro, Clackamas and Multnomah Counties), are on track to designate urban and rural reserves by late fall 2009.

Near Term Goals

Cities within Washington County will present their growth aspirations for the next 20 – 50 years to the Washington County Reserves Coordinating Committee (RCC.) Requested by Metro as part of the *Making the Greatest Place* planning effort, these aspirations will assist the RCC in their discussions. By March it is anticipated that “candidate” reserve areas will be identified, which will then receive increased analysis.

Community Involvement

Community awareness and engagement are crucial for these discussions. The public is invited to the RCC meetings and to Metro’s Reserves Steering Committee meetings. Multiple community-wide events will be held from late March to June. *Please check the website for agendas, locations and times.*

Project information is kept current at www.co.washington.or.us/reserves and <http://www.oregonmetro.gov/index.cfm/go/by.web/id=26257>

You are invited to provide comments at any time: reserves@co.washington.or.us. You may also arrange for a speaker to meet with your organization or request additional information. More interactivity on the website is coming soon.

Urban and Rural Reserve Candidates

In September 2008 a Reserves Study Area map was agreed to by the regional Reserves Steering Committee. Since then staff has been developing approaches to identify urban and rural reserve candidate areas. The approaches are based on criteria provided by Oregon’s Department of Land Conservation and Development (DLCD). Metro and the three counties are working to ensure we are coordinating efforts along the way.

As a basis for rural evaluation, staff is using a state Department of Agriculture study showing various farm land classifications, and applying those classifications to the Reserves Study Area in Washington County. Information from the state Department of Forestry and Metro’s Natural Landscape Features Inventory is also being used.

Urban reserves candidate analysis includes input from the business community regarding industrial and commercial lands, discussions with public service providers regarding the relative costs of providing infrastructure, and integration of the cities’ growth aspirations.

Ongoing Discussions and Refinements

Key stakeholders are providing on-going review and comment as criteria are applied. Evolving ideas are discussed with our cities’ planning directors and with elected officials at public meetings (the RCC.) Regional public events will soon offer the greater community opportunity to review the process and provide comment. We are trying to ensure that a broad spectrum of the public has many ways to be informed and engaged.

Upcoming steps

Population and employment projections are being evaluated to better estimate the number of people who may live and work here in 25, 40 or 50 years. Cities are providing growth aspirations and the cities and county also are determining existing capacity for growth within the current Urban Growth Boundary.

Another significant consideration is how *services* will be provided and funded for future growth areas. Identification of future service provision through the county, a city, or a special service district (or some combination) and the cost effectiveness of service delivery is part of the considerations.

Additional background information and upcoming meeting and public event schedules are available at www.co.washington.or.us/reserve.

Transportation Tax Continues to Enhance Livability in Washington County

Tualatin Valley Community Television (TVCTV) and the Washington County Land Use & Transportation Department (LUT) are pleased to release “MSTIP 2008: Building the Future for Washington County,” a program highlighting the county’s most significant road improvement projects over the past twenty- two years.

The first Main Streets Transportation Improvement Program (MSTIP) tax originated in 1986 as a short term levy put forth by Washington County to fund various construction projects throughout the area. Once this tax was approved, the LUT joined forces with local elected officials to form the Washington County Coordinating Committee (WCCC). This committee was designed to evaluate and determine the area’s greatest needs and priorities regarding road efficiency, safety and livability. As voters continued to approve various MSTIP levies over the years this temporary tax eventually became part of the permanent Washington County property tax rate.

Projects selected and featured in the video include the Highway 47 Bypass, Brookwood Parkway in Hillsboro and 170th Ave in Aloha. Each of these projects required the involvement of various cities, businesses, consultants and interest groups working together to ensure that the most eco-friendly and efficient transportation method was implemented every step of the way.

To learn more about the MSTIP program, go online at http://www.co.washington.or.us/deptmts/lut/cap_proj/mstiphis.htm

“MSTIP 2008: Building the Future for Washington County” can be viewed on TVCTV Channels 28 & 30 through the month of March. For more information or to obtain a complete playback schedule please contact Mary Weisensee at 503-629-8534 or mary@tvctv.org.

Public Affairs Forum Topics for March 2009

March 2, 2009

Topic: Renewable Energy.

Speaker: Desari Strader, Executive Director, Oregon Solar Energy Industries Association.



March 9, 2009

Topic: Urban/Rural Reserves and the Future Urban Growth Boundary.

Speaker: Mike Dahlstrom, Washington County Planning Division Program Educator.

March 16, 2009

Topic: How is the Nursery Industry doing in Oregon?

Speaker: John Aguirre, Executive Director of the Oregon Association of Nurseries.

Time: Mondays 11:15 am - 1 pm except on major holidays.

Location: Beaverton Elks Club, 3500 SW 104th Ave, Beaverton. 503-646-6116 (North of Canyon Rd. Enter through back of building)

For last minute updates and additional information about the forum, visit: www.washingtoncountyforum.org

BROTHER, CAN YOU SPARE...A NEWSLETTER?



The CPO program coordinators are looking at ways to reduce printing and postage costs and to make the program more sustainable. To do that we need your help by signing up to receive the newsletter electronically. We call this the *CPO NewsAlert*.

It’s simple, just send an email to Sally Yackley cpo.wash.co@oregonstate.edu with your name, street address, zipcode and email address to make the necessary changes. You will receive an email with a link to the CPO website with your current newsletter. Thank you for helping out!



Oregon State University Extension Service
Washington County
18640 NW Walker Road, Suite 1400
Beaverton, OR 97006-8927

NONPROFIT ORG.
US POSTAGE
PAID
PORTLAND OR
PERMIT NO 1

RETURN SERVICE REQUESTED

**CPO 7 NEWSLETTER
TIME SENSITIVE**

The Mitch Message - An Invitation from Representative Mitch Greenlick

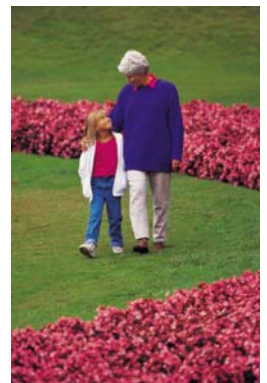
The next two town hall meetings will be jointly hosted with Senator Suzanne Bonamici at the Good Samaritan Hospital Auditorium (NW. 22nd bet. NW. Lovejoy and Marshall), **Saturday, March 7th, 11 am**, and at the St. Vincent Hospital classroom in the East Pavilion **Tuesday, March 17th, 7:00 pm** with Rep. Chris Harker.

Grandparents Raising Grandchildren: A Day for You

**Thursday, April 2, 2009
9:30 a.m. - 2:30 p.m.
Beaverton Foursquare Church
13565 SW Walker Rd. Beaverton OR 97005**

Share a day of fun with other grandparents. There will be community resources, interesting presentations, free lunch, prizes and complimentary massages.

There is no charge for this event but pre-registration is required. Call 503-615-4676 to save your space! Sponsored by: Washington Co. Disability, Aging & Veteran Services –Family Caregiver Support Program



If you would like a copy of *A Resource Guide for Grandparents and Other Relatives Raising Children in Oregon 2008* or *Oregon's Legal Guide for Grandparents and Other Relatives Raising Children 2008*, please call 503-821-1150.