

◆ CPO #1 NEWSLETTER ◆

Citizen Participation Organization #1

Serving: Cedar Mill/Cedar Hills

CPO Newsletters available on the web at <http://extension.oregonstate.edu/washington/cpo-1>

CPO 1 Map: <http://extension.oregonstate.edu/washington/sites/default/files/CPO1.pdf>

Washington County

October 2011



Oregon State University Extension Service supports CPOs through an intergovernmental agreement with Washington County, the sole funder of the CPO program. Extension CPO coordinators provide information on land use and livability issues, resource referrals, and work with CPO members to increase understanding of public policy and decision-making processes.

This newsletter material was developed by representatives of your local CPO and is forwarded to you as part of the Extension Service's support to citizen involvement in local government. Washington County administration, departments, and/or officials claim no responsibility, expressed or implied, for the content of this document.

CPO 1 OFFICERS www.cpo1friends.org

Chair, CCI Rep: Bruce Bartlett
503-645-4683
bruce@actisdesign.com

V Chair & CCI Alt.: Virginia Bruce
Secretary & CCI Rep: Pat Van Dyke
Members at Large: James Trumper
Lloyd Meyer

CPO COORDINATOR
Linda Gray, OSU Faculty
Phone: 503-821-1123
Fax: 503-690-3142
Email: linda.gray@oregonstate.edu
OSU Washington County Office
155 N. First Ave
Suite #200
Hillsboro, OR 97124-3072

To review copies of the Cedar Mill-Cedar Hills Community Plan, go to
<http://www.co.washington.or.us/LUT/Divisions/LongRangePlanning/Publications/ch-cm-cp.cfm>

Citizen Participation Organization 1

Tuesday, October 4, 2011

7:00 p.m.

***St. Vincent Medical Center
Souther Auditorium***

AGENDA

7:00 Welcome
Tualatin Valley Fire & Rescue Report
CPO Announcements and Discussion (neighborhood meetings and development status)
Community Announcements
"It's Your CPO" Open Mic

7:30 CPO 1 Election of Officers
CPO 1 By-laws state that we have elections in October for the coming year. The election this month offers the following slate of officers:

Chair: Bruce Bartlett
Vice-Chair: Virginia Bruce
Secretary: Pat Van Dyke
CCI Rep: Bruce Bartlett
CCI Rep: Pat Van Dyke

CPO 1 Motto - "The world is run by those who show up."

7:45 Overview of the Washington County Budget
We will have a visit by Don Bohn, Washington County's Assistant County Administrator (www.co.washington.or.us/CAO/), who will present the county's current budget, describing the sources of revenue and how that money is distributed to the various county departments. When Don last visited us in 2009, he gave a great presentation on the budget. However, while finances were then in good shape, there was concern that an economic downturn could cause us to start consuming the "reserve" portion of the budget, causing a cascading series of difficulties. That day has arrived and we will find out just what that means. Like any modern corporation, Washington County's finances are complex and inter-related and, given the growing needs for county services and shrinking revenues, an understanding of the budget is crucial to citizens in providing meaningful input and critique. Questions about details are welcome.

This newsletter is printed on 30% recycled paper with soy ink.

Oregon State University Extension Service offers educational programs, activities, and materials—without regard to race, color, religion, sex, sexual orientation, national origin, age, marital status, disability, and disabled veteran or Vietnam-era veteran status—as required by Title VI of the Civil Rights Act of 1964, and Title IX of the Education Amendments of 1972 and Section 504 of the Rehabilitation Act of 1973. Oregon State University Extension Service is an Equal Opportunity Employer.

Urban Growth Boundary Expansion: Be prudent, modest, or go to the maximum extent?

Later this month, my colleagues and I on the Metro Council will decide whether to expand the urban growth boundary (UGB) and, if so, where. This decision will affect how the region's communities develop and thrive, with good jobs and safe vibrant neighborhoods. A proposal was released in July followed by an open house held in Hillsboro. The proposal can be found online at www.oregonmetro.gov/greatplaces. The proposal identifies different areas for potentially expanding the UGB, to accommodate anticipated population growth, providing homes for people and industrial land for businesses to grow or locate over the next 20 years. As you read this, we have a draft ordinance to consider addressing a potential shortage, or need, for 15,400 new households and a need for some large lots for industrial job growth. *While I have heard feedback from some folks, I would like to hear from more.*

First, a little context. Metro staff analyzed approximately 9,799 acres of urban reserves and suggested 7 different areas to consider for potential expansion for housing needs. Taken together, those 7 areas involve approximately 3,400 acres. In addition to considering areas, we are also considering requirements to encourage mixed-use and multi-family development in expansion areas so that they would produce housing that responds to anticipated changes in demographics and housing preferences.

Some of these 7 areas are adjacent to cities which are not interested or prepared to plan these areas for many years, or require further annexation steps, so expanding there may be troublesome. Other areas, such as South Hillsboro and South Cooper Mountain, have some level of community planning complete already with city and property owners engaged and ready to take responsibility. Here in Oregon, before construction starts, community level planning and pre-development work must occur. Community planning for new areas can take 3 to 5 years. Pre-development work can take an additional 2 to 5 years. Developers must also line up all their construction financing as well, so it can take many years before new housing construction starts. Some have pointed out to me that the most recent UGB expansion for residential purposes was 9 years ago, and that even with these recessionary times, housing development has been occurring within the existing UGB, all ripening conditions for some consideration for potential expansion in order to satisfy the forecasted 20 year need. *What do you think?*

Should we be prudent and modest in our decision making, selecting 2-3 areas that seem ready and ripe (to the tune of about 2,000 acres) or should we not be so cautious and choose more, potentially all 3,400 acres in all 7 areas expecting that challenges will be overcome over the 20 year period?

The preliminary analysis also identifies a need for 200 to 1,500 additional acres to supply industrial sites with 50 or more acres (considered large lots), in order to address traded-sector industrial demand, which would support job growth. Of the areas studied, 1 specific area, with 310 acres north of Hillsboro has been recommended for expansion by Metro staff. The policy advisory committee to the Council, MPAC, recommended we choose this area and also consider a 150 acre area north of Forest Grove so that the region might have multiple options for industrial growth. *What do you think?*

Should we be prudent and modest in our choices with 2 areas totaling 460 acres, or should we be more expansive given the need for Oregon, and the USA, to be competitive in the global marketplace?

Your input is valuable and now is the time for you to weigh in. I appreciate hearing from the great people that make up our region. I hope that you will provide me with the benefit of your thoughts on the specific questions which I posed above. Please send your comments to the full Metro Council via email to 2040@oregonmetro.gov, or by letter to the Metro Council 600 NE Grand Ave., Portland, OR 97232. You can also come testify in person at the public hearing on Thursday October 6, beginning at 5 p.m. at the Beaverton Library, located at 12375 SW Fifth St. A final public hearing and Council vote is scheduled to take place Thursday Oct. 20, at the Metro Regional Center in Portland beginning at 2pm.

Thank you in advance for providing your input.

Wishing you an enjoyable Autumn,



- Kathryn Harrington, Metro Councilor District 4

CPO 1 View From the Chair – October 2011

Resiliency is generally defined as the ability to spring back from, and successfully adapt to, adversity. In general terms, humans have "a self-righting tendency" that operates best when people have resiliency-building conditions in their lives. The group **Resiliency in Action** (www.resiliency.com) describes what these conditions are and provides a wealth of information about building resiliency.

Another related effort is the creation of “**Resilience Circles**” (<http://localcircles.org/>) which are small groups of 10-20 people who come together to increase their personal security through three components: learning, mutual aid and social action. The economy and environment are going through a deep transition, leaving many of us feeling anxious and economically insecure. We’re facing unemployment, foreclosure, lost savings, and a rapidly changing environment. Many of us are isolated and face these challenges without the support of a community. Across the country, people are starting Resilience Circles (also called “Common Security Clubs”) in their communities (<http://localcircles.org/organize-a-circle/>) to get to know their neighbors and explore a new kind of security based on mutual aid and community support. Their free, open-source curriculum (<http://bit.ly/nAoFOL>) provides a guide for facilitators to lead groups through seven initial sessions, and after that groups determine their own activities and projects (<http://bit.ly/nY5HJH>).

It is hard to be resilient if you are hungry, so parents with children who qualify to receive Free or Reduced-Price meals must be certain to reapply each year. The Oregon State qualification criteria for this program are: If the child is homeless - (Living doubled up/sharing housing with friends or family OR living in a shelter, a motel, a vehicle, trailer or campground); If the child lives in a household receiving Food Stamps, Temporary Assistance for Needy Families (TANF) or is in Foster Care; If household income is within the limits on the Federal Income Guidelines. Even if they don’t qualify now, parents are encouraged to apply during the school year if their household size goes up, income goes down, or if they start receiving Food Stamps, TANF or other benefits. Also, if a parent/guardian loses their job, a child may be able to get food assistance. A new Free and Reduced-Price Meal Application is required each school year (Unless the parent/guardian has received an Eligibility Notification-Free Meals Letter). Apply on-line for Free and Reduced-Price Meal Benefits at www.beaverton.k12.or.us/home/departments/nutrition-services/. For more information, please contact the Nutrition Services, Meal Benefits Office at 503-591-4569 or 503-591-4567.

The International Walk/Bike to School Day is Wednesday, October 5, 2011. Twenty three Beaverton schools will join the more than 2,064 registered schools in this world-wide event, which includes all 50 states in the U.S. and 42 nations around the world. The Beaverton Schools in CPO 1 participating include Bonny Slope Elementary, Cedar Mill Elementary, Findley Elementary, Jacob Wismer Elementary, Oak Hills Elementary, Terra Linda Elementary, West Tualatin View Elementary and Cedar Park Middle School. The focus of this yearly event is to advance student safety, promote a healthy lifestyle, increase driver awareness of children walking and biking and improve the environment. www.walknbike.org. For more information, contact Ruth Deal at 503-297-0925 or the BSD Communications & Community Involvement at 503-591-4360.

Ruth is a CPO 1 member who has been very involved in all forms of active transportation and led the grant application effort which resulted in Washington County receiving a \$411,000 **2012 Safe Routes To School** (SRTS) project award to focus on pedestrian safety infrastructure enhancements in the area of the West Tualatin View Elementary School on Leahy Road. This project is one of ten statewide projects approved for funding during the current cycle. The national SRTS was enacted in 2005 to provide funding for both infrastructure and non-infrastructure projects to encourage elementary and middle school children to walk and ride bicycles to school in order to promote a healthy lifestyle among school children and reduce congestion, fuel consumption, and air pollution in the vicinity of schools.

- Bruce



Neighborhood Review Meetings

Note: Some of the following meetings may have already occurred. They are listed here because we want you to be aware of potential development on sites within your CPO.

♦The owners of the property located at 10840 NW McDaniel Road and 10775 NW Dumar Lane in the R-6 zoning district wish to discuss their proposal for a two-parcel partition. **The neighborhood meeting will be held Saturday, October 1, 2011, 2:00pm at Cedar Mill Library, 12505 NW Cornell Rd**

CPO #1 LAND USE ITEMS UPDATED			
CASE FILE/TYPE	APPLICANT LOCATION	PROPOSED ACTION	STATUS
1100149 Type II NC	Ginger Properties LLC 11200 NW Thompson Rd Portland 97229	Development review for a mixed use development (office/retail) and an access management plan for access to NW Thompson Rd.	Application received. Status is pending.
1100214 Type II R6	Andre and Claudia Idzari 1200 NW 95 th Ave Portland 97229	Development review for a single-family dwelling on a 13,406 square foot lot of record.	Application received. Status is pending.
1100247 Type II TO:RC	Safeway Inc 13505 NW Cornell Rd Portland 97229	Determination of a non-conforming use for a free-standing sign & alteration of the sign face.	Application received. Status is pending.

Because of space constraints, only Type II and III Development Applications of interest to a majority, are listed in the Newsletter – for Type I Applications or for latest updates, please visit the County’s website at

<http://washims.co.washington.or.us/GIS/index.cfm?id=31>

**All land use hearings are held at the Charles D. Cameron Public Services Bldg.
Mailing Address: Wash. Co DLUT, 155 N. First Ave. #350 Hillsboro, OR 97124
503-846-8761 / fax: 503-846-2908**

Washington County Land Use and Transportation Customer Reception Hours at Public Services Building Changing Effective October 3

Due to additional staffing reductions in our Development Services division, effective Monday, October 3 customer reception hours at the Washington County Department of Land Use and Transportation (LUT) offices on the 3rd floor of the Public Services Building (155 N First Avenue, Suite 350, Hillsboro) will change to the following schedule:

**OPEN MONDAY-THURSDAY, 8:00 a.m. - 4:00 p.m.
CLOSED FRIDAYS**

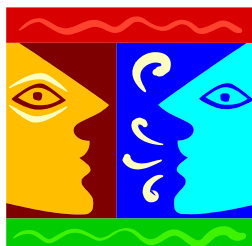
LUT divisions affected by this change are:

**Development Services (Building Services and Current Planning)
Long Range Planning
Survey (Development Review)**

These divisions handle building permits, development applications, long range planning, plats, and other land use services. The schedule above applies only to walk-in customer reception hours in the LUT offices on the 3rd floor of the Public Services Building. Staff in these LUT divisions will be available to respond to phone calls, e-mails and faxes Monday through Friday, 8:00 a.m.—5:00 p.m.

LUT divisions at the Walnut Street Center (1400 SW Walnut St, Hillsboro), which handle road-related services are not affected by this change.

If you have questions, please contact Stephen Roberts, LUT Communications Coordinator, 503-846-4963



CPO Email News and Discussion Group

CPOTalk, an email news and discussion group for CPO members, focuses on land-use and livability issues in Washington County. Sign up to receive the latest information on land use and livability in Washington County. Regular postings include articles from local newspapers, state legislative updates, and local/regional/state reports relating to land use and livability.

To sign up for *CPOTalk*, send an email to cpo.wash.co@oregonstate.edu with your name, street address, zipcode and email address. We'll do the rest!

For more information, contact Margot Barnett, CPO Coordinator, 503-821-1114 or margot.barnett@oregonstate.edu.



Plan to attend!

Hillsboro Airport Family-Friendly Open House

October 29, 2011 from 11:00AM – 3:00PM

3355 NE Cornell Road, Hillsboro

Parking is available as you enter from Cornell Road

The Port of Portland invites you to explore aircraft displays and flight simulators, visit children's activities, and enjoy a tour of the airport.

For additional information, please contact

Emily.geddes@portofportland.com or 503.415.6853

Back to School – Slow Down for the Kids!

Schools are back in session and the Sheriff's Office is reminding people to watch out for kids and allow extra time for your commute. The Sheriff's Office is reminding people to watch out for school zones and slow to 20 miles per hour prior to entering the school zone. Also, this time of year brings a heavy increase in morning traffic so allow extra time for your commute.

The Sheriff's Traffic Safety Unit will be focusing patrols on school zones after Labor Day. Their goal is to be a visible reminder to drivers that school has started, and that drivers need to slow down and watch out for children. In 2006 the rules changed regarding reduced speed limits in school zones. Below is a guide describing situations when you need to slow to 20 MPH in a school zone, and when you need to stop for a school bus.



Slow to 20 MPH at:

- Roadways adjacent to school grounds when signal lights are flashing, or during school days from 7:00 a.m. to 5:00 p.m.
- Crosswalk areas away from school grounds when signal lights are flashing, or when children are present

ORS 811.124 defines "when children are present" as when children are occupying or waiting to cross in the crosswalk or there is a traffic patrol member at the crosswalk. Note that "when children are present" applies only at a crosswalk away from the school grounds.

Stopping for School Buses: School bus drivers turn on flashing amber lights to warn traffic that the bus is preparing to stop on the road to load or unload children. Drivers should get ready to stop. When school bus drivers turn on the red lights, drivers meeting or overtaking the bus from either direction must stop before reaching the bus. Drivers must remain stopped until the bus driver turns off the flashing red lights. The school bus stop law applies on any roadway with two or more lanes of traffic. There is one exception to the law: if you are on a physically divided highway with two roads separated by an unpaved median strip or barrier, you must stop only if you are on the same road as the bus. A painted median strip or a center lane used only for left turns does not create two separate roads.

Washington County Sheriff's Office Press Release

Shorter Internet Links



Our newsletters contain several informative internet links, and some of them are quite long. We provide shortened links in these cases, so that our print readers can easily type them into their internet browsers. These abbreviated links will take you to the same destinations, and you won't have to type as much.

Plant Salad Greens Now For Fall and Winter Harvest

The end of summer is a perfect time to sow salad greens for harvest throughout the fall and winter months.

"If you live in the warmer, wetter regions of the state, you can plant lettuce and other greens now," said Oregon State University vegetable breeder Jim Myers. "In the colder areas of the state, a cold frame or cloche can help lengthen the harvest season into winter."



If you harvest through the winter, protect your greens from late fall and winter downpours. Leafy greens tend to rot.

For salad lovers, plant a row of about five feet of salad greens per week in successive plantings. Seeds of salad greens are sold as mixtures (as "mesclun") or separately as varieties. The mixtures may contain any combination of lettuces, chicories, dandelion greens, cresses, arugulas, chervil, endive, fennel, parsley, oriental greens, mustards, purslane, orach and mache (corn salad). Some are tangy; others are mild or bitter. When the flavors, colors and textures are combined with a zesty dressing, salad becomes a nutritious eating adventure.

Arugula, also called rocket or roquette, is a hardy member of the mustard family. With a toasty, pungent flavor, arugula can be sown as soon as the soil can be worked in the spring and periodically thereafter. Resembling dandelion greens, arugula is rich in beta-carotene and higher in vitamin C than almost any other salad green. Some eastern Mediterranean people consider it an aphrodisiac.

Endive is in the same family as lettuce. With smooth pale elongated heads, endive has more flavor than many types of lettuce. Curly endive, sometimes called chicory, has curly edged green leaves. Escarole, a relative of chicory, has broad, wavy green leaves with a pleasant slightly bitter flavor.

Radicchio, or red chicory, adds wonderful red color and zesty, mildly bitter flavor to salads. It often grows in small heads. Mache, also called corn salad, has velvety leaves and a mild taste and is one of the most cold-hardy of the salad greens. Watercress has pungent sprigs that resemble parsley. Cresses have a peppery flavor, while mustards "bite" the tongue.

Plant salad green seeds a quarter-inch deep in rows four to six inches apart. Harvest the greens when young, with scissors. Cut the young leaves about a half-inch above the soil line and the leaves may re-grow for a second harvest. Or the greens may be cut at ground level for a single harvest.

~ Jim Myers, myersja@hort.oregonstate.edu

Visit The Extension Service Gardening web page at <http://extension.oregonstate.edu/community/gardening>

Rural Living Field Day

West Multnomah Soil & Water Conservation District

Celebrate your rural lifestyle, learn, swap stories with your neighbors and enjoy a catered lunch!

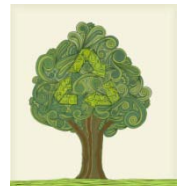
October 1, 2011, 9:00 AM to 2:00 PM at Malinowski Farm, 13450 NW Springville Road

Professionals will provide an exciting day full of interesting & useful information on a variety of topics; forestry, invasive weeds, livestock, small agriculture, wildlife & pollinators, fire protection, marketing your farm and much more!

Cost is only \$10 per person or \$15 for families. Lunch provided! Have fun, enjoy our summer and help your land! Sign up now by clicking "Events" at <http://www.wmswcd.org>

GO GREEN, SAVE A TREE! The CPO program coordinators are looking at ways to reduce printing and postage costs and to make the program more sustainable. To do that we need your help by signing up to receive the newsletter electronically. We call this the *CPO NewsAlert*.

It's simple, just send an email to cpo.wash.co@oregonstate.edu with your name, street address, zipcode and email address to make the necessary changes. You will receive an email with a link to the CPO website with your current newsletter. Thank you for helping out!



Seasonal Hints

During colder weather, heating a non-weatherized home can account for up to 60 percent of your energy costs. Here are some simple things you can do now to help save energy and save money:

- Keep your thermostat at recommended levels.
 - Day: 68° F
 - Night or when no one is home: 55° F
- Air filters on forced air systems should be cleaned or replaced regularly (usually, once at the beginning of the heating season and once in the middle).
- If you have baseboard heaters, wall heaters or other room heaters with individual thermostats, do not heat rooms that are not being used.
- Open south-facing blinds and curtains during the day to allow the sun to help heat your home.
- Close blinds and curtains at night to help keep the heat in.
- Keep your fireplace damper closed when you are not using the fireplace.
- If you have storm windows and storm doors, make sure they're closed.
- If you have window air conditioners, put on winter covers to stop air leaks.
- Caulk or seal air leaks around windows, doors and plumbing or electrical penetrations in walls, ceilings and floors.



Update on the Planned Relocation of Fire Station 68

Following the required land-use process, Washington County approved TVF&R's development application for a fire station with community room at the NW corner of NW Thompson Road (13657 NW Evergreen Street). To see the hearings officer's report and other documents related to this application see <http://bit.ly/o4kudU> and click on the attached documents at the bottom of the page. Having satisfied the land-use process, the Fire District has begun site preparation. By bundling construction activities with another fire station project, the Fire District will save taxpayers' money.

Activities on the site are being conducted during weekdays from 8am-4pm, including:

- Demolition of an existing home on the property.
- Installation of underground utilities such as storm drains, building and site electrical, and plumbing.
- Excavation and prep work for sidewalks, driveways, curbs, footings, and foundation.

The site will then be winterized from November through February, with construction expected to resume in the spring.

In late July, a small number of neighbors filed an appeal with the Land Use Board of Appeals (LUBA). Unless reversed by LUBA, the Washington County Land Use approval will stand. A ruling may take up to six months. Citizens expressed concerns about noise, traffic safety, impacts on property values and whether the proposed project complies with specific code requirements for public buildings within the urban growth boundary to have an access to a collector or arterial level street.

Fire Chief Mike Duyck appreciates that the land-use process is an important means for citizens to be heard, and outreach efforts have been ongoing since the project's inception in 2010. It is Tualatin Valley Fire and Rescue's goal to continue to provide factual information about the reality of living next to a fire station. With over half of their 21 fire stations located in neighborhoods, TVF&R has a longstanding commitment to, and history of, being a good neighbor. (To see a video from neighbors already living next to fire stations, click here: <http://bit.ly/pnhLxw>)

For more information, please visit <http://www.tvfr.com>



Oregon State University Extension Service
 Washington County
 155 N. First Ave.
 Suite #200
 Hillsboro, OR 97124-3072

NONPROFIT ORG.
 US POSTAGE
 PAID
 PORTLAND OR
 PERMIT NO 1

RETURN SERVICE REQUESTED

**CPO 1 NEWSLETTER
 TIME SENSITIVE**

Drug Turn-In Event October 29th
Save the Date!

Prescription drug abuse is increasing at an alarming rate, especially among our youth. We are also seeing a trend among teens to progress from using prescription drugs to using Heroin.

We need your help. Studies show that the majority of abused prescription drugs are taken from medicine cabinets owned by family and friends. Please clean out your medicine cabinet and remove or lock up unused prescription and over-the-counter medications.

It is never appropriate to dispose of medications by flushing them down the toilet or throwing them directly into the trash, so we are offering a free opportunity to turn-in unwanted drugs for disposal.



Please mark your calendar for **our next Drug Turn-In on Saturday, October 29, 2011 at Aloha High School, 10:00AM – 2:00PM.** You can drop off any unwanted prescriptions and over-the-counter medicines at this event. This includes those in pill or syrup form and any unknown tablets and capsules. However, any illegal drugs (such as marijuana or methamphetamine), medical waste, syringes or needles, thermometers, IV solutions, lotions, or creams will not be accepted. Medications from nursing homes, doctor's offices, or any other business will not be accepted.

The service is free and anonymous—no questions will be asked about the medications that are surrendered.

Sheriff's Office News (online)