



CPO #9 NEWSLETTER



Citizen Participation Organization #9

Serving: Hillsboro and Orenco

CPO Newsletters available on the web at <http://extension.oregonstate.edu/washington/cpo-9-hillsboroorenc>

CPO 9 Map: http://extension.oregonstate.edu/washington/sites/default/files/cpo9_0.pdf

Washington County

December 2011



Oregon State University Extension Service supports CPOs through an intergovernmental agreement with Washington County, the sole funder of the CPO program. Extension CPO coordinators provide information on land use and livability issues, resource referrals, and work with CPO members to increase understanding of public policy and decision-making processes.

This newsletter material was developed by representatives of your local CPO and is forwarded to you as part of the Extension Service's support to citizen involvement in local government. Washington County administration, departments, and/or officials claim no responsibility, expressed or implied, for the content of this document.

CPO 9 STEERING COMMITTEE

Chair, CCI Rep: Albert Stanfield

Vice Chair: Tom Black

Secretaries: Heather Robinson

Kimberly Culbertson

Members at Large: Shaun Starr

Glenna Dryden

www.cpo9friends.org

email: info@cpo9friends.org

CPO COORDINATOR

Margot Barnett, OSU Faculty

Phone: 503-821-1114

Fax: 503-648-9931

Email: margot.barnett@oregonstate.edu

OSU Washington County Office

155 N. First Ave.

Suite #200

Hillsboro, OR 97124-3072

To review copies of the East Hillsboro Community Plan, go to

<http://www.co.washington.or.us/LUT/Divisions/LongRangePlanning/Publications/east-hillsborocp.cfm>

Citizen Participation Organization 9

CPO 9 will not meet in December.

CPO 9 meets the second Monday of odd numbered months.

**The next CPO 9 meeting will be
Monday, January 9, 2012**

Plan on coming to hear from Metro Councilor Kathryn Harrington



Inclement Weather and CPO Meetings

CPO meetings will be cancelled in the event of inclement weather when driving conditions may be hazardous. Our decisions will match those of PCC which generally posts cancellations of evening events/classes after 3 pm. to the PCC homepage: www.pcc.edu. An alert will be displayed in red near the top of the page. Depending upon your browser's settings, you may need to refresh the page periodically to see the most up to date information.

If your CPO is scheduled to meet and the weather is bad, check the PCC website. If you see the red alert band at the top of the page, this means your CPO meeting is cancelled. If additional information is available, the alert may include links to other documents. The PCC operator voice recording will be updated to include closure notifications. This recording can be reached at (503) 244-6111, or toll free at 1-866-922-1010. We will also have a recording at the CPO Program telephone number (503) 821-1128.

The CPO 9 Steering Committee usually meets on the second Wednesday of the month, quarterly (January, April, July, and October 2011) at the **Public Services Building, Room 105**, 155 N. First Ave, Hillsboro from 5:30-7:00PM. Meetings are open to all. Contact Margot Barnett at 503-821-1114 with questions or to confirm that the meeting will be held.

This newsletter is printed on 30% recycled paper with soy ink.

Having Fun, Exploring and Planting at a Natural Area

Imagine this... It was an early, chilly, rainy Saturday morning in November. Did I really want to get out of bed this early to join in a natural areas restoration effort in the rain? It took a little mental coaxing to leave the dry warmth of home but I'm sure glad I did!

Two voter approved bond measures have thus far preserved 11,000 acres, ninety miles of river and stream banks, and supported hundreds of community projects in and around our region. Metro and community partners have a variety of done-in-a-day and ongoing restoration projects available at parks and natural areas across the region, suitable for groups of all sizes and ages. Together, we're protecting water quality, wildlife habitat and outdoor recreation opportunities for future generations.

On that early November morning, I joined 15 other adults and children in an effort sponsored by the Tualatin Riverkeepers (www.TualatinRiverKeepers.org). Not far from my Beaverton area home, we worked on a Metro-owned property to help plant a natural area along the Tualatin River. As one of my fellow planting volunteers put it, "I thought I'd participate to just help out, but I've learned so much!" We planted 1000 camas bulbs, a native plant that has a lovely flower when it blooms in the spring. They were small bulbs about the size of your fingernail. Along with my 15 volunteer-mates, we planted those two small lunch-sized sacks of bulbs in no time. We also spread two types of native grasses, seeding two different areas of the property, one open and one wooded. Along the way, we heard from the property manager about the science of the area and how it has changed with restoration efforts over the last few years, providing a healthier flood plain for the Tualatin River, and plant life to sustain bugs, red-legged frogs, birds and more. We got to explore the property, the handsome oak tree, discovered mushrooms, wasp "oak apples" and deer too. All that in less than two hours, plus a little travel time. Fall, winter and wet spring months are the best times for these restoration planting efforts, hence the November project. But it was more than a feel-good, help-nature program.

When I turn on my faucet at home, I receive drinking water that had originally flowed from a reservoir to the treatment plant via the Tualatin River. When I flush my toilet, after that sewage is treated, the clean water flows into the Tualatin River. When it rains, storm water flows from our neighborhoods and sidewalks into creeks throughout Washington County which ultimately flow into the Tualatin River. No doubt about it, the Tualatin River can't get away from feeling the impact of us urban folk. Our livelihood depends on the health of the river; and the health of the river and the wildlife that rely upon it, depend on us. Restoration planting efforts in natural areas help restore floodplains that clean our water, and offer habitat to wildlife that depend on the river. Restoration efforts all over Washington County and are connected to the health of the Tualatin River. I know my efforts that morning helped.

No matter your motivation, why not join in the restoration efforts? It's fun, it's educational and it just plain makes you feel good. The butterflies, bugs, birds and frogs will be happy you did! Check it out at www.oregonmetro.gov/naturalareas and www.oregonmetro.gov/volunteer.

Kathryn Harrington, Metro Councilor, District 4

Metro Council completes urban growth decision. On October 21 the Metro Council voted 6-0 to add 1985 acres to the region's urban growth boundary for future housing and jobs. (Councilor Rex Burkholder was excused.) This represents less than a one-percent expansion of the region's urban footprint to accommodate thousands of additional households and workers over the next 20 years. To find out more visit: <http://news.oregonmetro.gov/5/post.cfm/metro-council-completes-urban-growth-decision>.

Learn more about what your property taxes pay for at Metro. Property taxes support essential services provided by schools, counties, cities, special districts and other local governments, including Metro, but property tax statements don't provide detailed information about what tax money to a particular government gets spent on. To better illustrate how revenues from property taxes are spent at Metro, the agency maintains a website to describe exactly how Metro assesses property taxes and what the money pays for. Learn more here: <http://news.oregonmetro.gov/5/post.cfm/learn-more-about-what-your-property-taxes-pay-for-at-metro>.



December, 2011

- The Hillsboro Police Department is looking for students ages 12 – 17 to serve on the Hillsboro Youth Peer Court. The Hillsboro Peer Court is a diversion program or an alternative to the Juvenile Department for juveniles in Washington County who have been cited by law enforcement authorities. In order to participate, the youth offenders have admitted their guilt; their “sentence,” however, is determined by a jury of their peers. The peer court meets the second, third and fourth Tuesday of every month from 4:30 – 9:00 pm at Municipal Court located on the first floor of the Civic Center. For more information about this program, please call Ben Romero at 503-615-6797 or 503-681-5336 or email at benrom@ci.hillsboro.or.us.
- The holiday season in historic downtown Hillsboro will kick off on December 3rd
- Candle usage has risen in popularity as have fires from candles that have been left unattended. If you will use candles during the holidays, use them safely. Do not use candles in decorations or displays; the open flames from these candles can ignite the materials in those decorations and displays. If you do use candles, be sure to use the following safety tips:
 1. Place candles securely in non-tip candle holders.
 2. Keep candles out of the reach of children.
 3. Keep candles well away from trees, decorations, curtains and other items that burn.
 4. Never put candles near windows or exits.
 5. Always blow candles out before you leave the room or go to sleep.
- **HOLD THE DATE:** The Mayor’s annual State of the City presentation is scheduled for January 19th at the Cultural Arts Center. Everyone is invited.

Clean Water Services Seeks Applicants for Advisory Commission

Clean Water Services’ Board of Directors is seeking applications from individuals to serve a three-year term on its Clean Water Advisory Commission (CWAC). There are currently two vacancies on the Commission. One vacancy is for a representative from Commission District #3 which includes Bull Mountain, portions of Garden Home, Metzger and the cities of Durham, Tigard, Tualatin, King City, Sherwood and a portion of Wilsonville. The other vacancy is for a representative from Commission District #4 which includes much of the rural area of Washington County and the cities of Banks, Cornelius, Forest Grove, Gaston, Hillsboro and North Plains. Applicants for these positions must reside in the respective Commission District to be eligible.

The purpose of the 15-member CWAC is to review and discuss major policy issues and programs related to the management of water resources in the Tualatin River Watershed and make recommendations to the Board of Directors. Clean Water Services’ Board of Directors also serves as the Washington County Commissioners. Meetings are generally held on the evening of the third Wednesday of each month and typically run two hours.

Commission applications are available on Clean Water Services’ website at www.cleanwaterservices.org or at the District’s main office at 2550 SW Hillsboro Highway, Hillsboro. Citizens interested in applying for CWAC are encouraged to contact Mark Jockers at (503) 681-4450. Applications will be accepted through January 15, 2012 or until the positions are filled.

Clean Water Services is a water resource management utility for more than 527,000 people in urban Washington County and small portions of Multnomah County, Clackamas County, Lake Oswego, and Portland. Clean Water Services operates four wastewater treatment facilities, constructs and maintains flood management and water quality projects, and manages flow in the Tualatin River to improve water quality and protect fish habitat. Although Clean Water Services maintains a close working relationship with Washington County government, it is a separately managed and financed public utility.

CITY OF HILLSBORO LAND USE AND DEVELOPMENT APPLICATIONS

CASE #/ZONE	APPLICANT/LOCATION	PROPOSED ACTION	STATUS
DR 19-11 Subway	Thomas Sconzo on behalf of Subway North of SW Walnut St, south of SW Oak St, east of SW 17 th Ave, west of SW Armco Ave.	Proposal to construct a new, stand-alone Subway restaurant with drive-thru and sit-down food service. The proposed building would be about 1800 square feet and would be located within the existing parking lot directly north of 1400 SW Oak St.	Approved 11/18/2011
Downtown core conversion of 1-way grid back to 2-way travel	Main St and Lincoln St from 1 st Ave to 6 th Ave. 2 nd through 5 th Avenues from Lincoln St to Walnut St.	Review a Draft City Council Ordinance regarding the proposed conversion of streets in Downtown Hillsboro from one-way to two-way streets.	Postponed to date uncertain
DR 25-11 Intel Ronler Acres – D1X Central Utility Building (CUB4)	Intel Corp North of NE Butler St, south of NW Evergreen Pkwy, east of NW Shute Rd, west of NW 229 th Ave.	Proposal to construct a new two-level, 99,703 square-foot central utility building (CUB4) intended to support the new D1X fabrication building. The new CUB4 will be constructed within the same building footprint as the RS3 building, which is being demolished. The application also includes interconnecting trestles between the D1X and CUB 4 buildings, and cooling towers.	Approved 11/01/2011
DW 2-11 Withdrawing previously annexed properties from Tualatin Valley Water District	City of Hillsboro	City Council to consider a request to withdraw properties previously annexed into the Hillsboro city limits, from the Tualatin Valley Water District (TVWD).	Final Approval 11/04/2011
ZC 6-11 Island Annexations Area 6	City of Hillsboro Subject properties are located northeast of the Jackson Bottom Wetlands Preserve, and southwest of SE 7 th Ave.	Consider a City-initiated request for approval of a zone change from County IND Industrial to City R-7 Single Family Residential on portions of two properties.	Final Approval 11/15/2011
ZC 7-11 Hillsboro and Rickett Properties	City of Hillsboro Northeast of the Jackson Bottom Wetlands Preserve, and southwest of SE 7 th Ave.	Consider a City-initiated request for approval of a zone change from County IND Industrial to City M-2 Industrial on three properties. The subject properties were previously annexed into the city limits.	Final Approval 11/15/2011
AN 3-11 and ZC 8-11 Thompson	City of Hillsboro Located generally south of SE Witch Hazel Rd, west of SE 45 th Ct, east of SE 48 th Pl.	Consider a request for annexation of one property, about 0.87 acres into the City Limits of Hillsboro. Second hearing to consider a City-initiated request for approval of a zone change from County R-9 Residential to City R-7 Single Family-Residential and from County R-15 Residential to City A-1 Duplex Residential on the same property.	Final Approval 11/10/2011
MLP 3-11 Orenco Woods Crossing	The Trust for Public Land North of NW Quatama Rd and East of NW 225 th Ave	Proposal to divide the property into three smaller parcels for: nature park, future development, historic McDonald House	Pending.

CITY OF HILLSBORO LAND USE AND DEVELOPMENT APPLICATIONS, Continued

CASE #/ZONE	APPLICANT/LOCATION	PROPOSED ACTION	STATUS
DR 36-11 Intel Ronler Acres RS4,5,6 Parking Expansion	Intel Corp. North of NE Butler St, south of NW Evergreen Parkway, east of NW Shute Rd, west of NW 229 th Ave.	Proposal to expand existing surface parking lots within the Ronler Acres Campus, located in the northwestern portion of the overall site. Expanded parking is proposed to support Intel staff and skilled labor force within the RS4, RS5 and RS6 buildings. Existing driveways will be utilized to access Shute Rd. Development of portions of the expansion area with temporary gravel surfacing is proposed prior to final paved build-out to accommodate the current parking needs. The application also includes landscaping and lighting throughout the existing parking lots.	Pending
DR 38-11 CWS Field Yard Storage Lot	Clean Water Services South of NE Cherry Dr, at the SW corner of its intersection with NW Cherry Lane.	Proposal to develop the subject property for use as a storage lot for construction materials, vehicles and equipment. The applicant plans to install a 60-foot long asphalt access, a power operated gate, a person gate, and perimeter landscaping along Cherry Lane and Cherry Drive. A sidewalk will be installed along the frontage of Cherry Lane.	Pending
DR 34-11 Chase Bank – Baseline and Main	1328 Baseline, LLC 2 vacant building, addressed at 1296 and 1328 SW Baseline St.	Proposal to remove the existing vacant buildings to construct a new Chase bank branch building with a three-lane drive through remote teller and canopy. The proposed new building would be about 4254 sq. feet and one story. Associated parking, landscaping and on-site utility work is also proposed with this application.	Pending
DR .39-11 Solarworld SA- 10 Expansion	SolarWorld Industries America SE of the existing SolarWorld campus, west of NE Dawson Creek Drive, north of NE Brookwood Parkway, where NE 49 th Place intersects.	Proposal to expand onto the two southern parcels to reuse an existing manufacturing building for storage with a proposed addition of about 1000 sq. feet to the existing loading dock area. The application also includes a proposed vehicular connection to the existing SolarWorld campus to allow for transfer of materials.	Approved 11/23/2011
DR 40-11 Parks at Laurel Oaks Phase 2 Townhomes	Centex Homes North of SE Lone Oak St, south of SE Alexander St, east of SE Brookwood Ave, west of SE White Oak Ave.	Proposal to construct nine single family residential attached townhome units on nine parcels within the Parks at Laurel Oaks residential development. The proposed townhomes would be located on Lots 78-86 at the second phase of Parks at Laurel Oaks. The proposed townhomes are 3 stories in height with rear-loaded garages accessed by a private alley off of SE Lone Oak St.	Pending

Hillsboro Planning Department, 150 E. Main St. Fourth Floor, Hillsboro, Oregon. 503-681-6153

Planning and Zoning Hearings Board; Planning Commission and City Council meetings are held in the Auditorium,
Hillsboro Civic Center, 150 E. Main St, Hillsboro. www.ci.hillsboro.or.us/Planning

Order of testimony: applicant; other proponents; opponents; applicant's rebuttal. Refer to DR Monthly Report on the City
of Hillsboro website at <http://www.ci.hillsboro.or.us/Planning/DevReviewMonthReport/Default.aspx>

Help County Aging and Veterans Services Prepare for Baby Boomers

There is still time for the community to voice their opinions and have them included in Washington County Disability, Aging and Veteran Services' next strategic plan. The new strategic plan will be for 3 years beginning in 2012 through 2014. DAVS is interested in the opinions of Washington County residents about retirement and what services and activities they need and want as they grow older. A survey is available through December 31, 2011. To access the survey, go to: <http://www.surveymonkey.com/s/CVL58YN>

"Our society has never experienced a time when so many people are living to advanced ages. Right now, more than 25 percent of Washington County residents are over the age of 50. Planning for such a large group of individuals is challenging for agencies like DAVS charged with developing services to meet the needs of older people as well as veterans and those with disabilities. We need the community's help to make sure we are on the right track in planning for current and future needs," states Chris Larson who is serving as the contract facilitator.

The 3-year plan will address the needs and the gaps in services for seniors, veterans and people with disabilities. Anyone interested in taking the survey is invited to complete it online or if you would like a paper copy of the survey, please contact Janet Long at (503-846-3081) or E-mail to: janet_long@co.washington.or.us.

Permanent Drug Drop Box at Your Sheriff's Office

Last month, your Sheriff's Crime Prevention teamed with narcotics investigators and the DEA to bring a Prescription Drug Turn-In Event to Aloha. You responded and we collected 302 pounds of unneeded pills in just one morning - nice work!

Cleaning out unneeded medications, especially prescription painkillers, is one of the easiest ways to help prevent prescription drug abuse among teens who do not realize how addictive opiates and many other drugs can be.

And now we have a year-round solution! Thanks to funding from the High Intensity Drug Trafficking Area (HIDTA) program, your Sheriff's Office has installed a permanent Drug Take Back Drop Box in our lobby in Hillsboro!



Citizens can turn in prescription medications and samples, all over-the-counter medications, vitamins, pet medications, medicated ointments, and liquid medication in leak-proof containers. This part of our lobby is open from 8:00 am to 9:30 pm daily. HIDTA also provided drug drop boxes at the Beaverton and Sherwood Police Departments, so you can visit the site that is most convenient. Thanks for helping to keep our community safe!

Sheriff's Office News, (Vol_7 Issue_11-November, 2011)

Join OSU Master Gardeners at the Following Programs:



Tuesday, December 6, 2011. "Seed Quality" by Chip Bubl, Columbia County Extension Agent will cover genetic, physical & environmental factors affecting seed quality and best practices for assuring good seed quality for home garden use.

Tuesday, January 3, 2012. "Vegetables in Bloom" by Alice Doyle of Log House Plants will present the latest on growing grafted veggies, including the Mighty Mato and hardworking vegetables that don't quit even when the weather won't cooperate.

Meeting location & day: First Baptist Church 5755 SW Erickson Ave., Beaverton, OR 97005, located between Farmington Rd. & Allen Blvd. The first Tuesday of each month beginning at 6:45 pm.

For more information go to the chapter Website: <http://www.washingtoncountymastergardeners.org/>.

Parents Urged to Get Newborn Hearing Screenings

Washington County Department of Health and Human Services- Public Health Division, in partnership with the Oregon Early Hearing Detection and Intervention (EHDI) Program, is offering no-cost infant hearing screening for infants who did not receive a newborn hearing screen. Permanent hearing loss is the most common birth defect, and it is difficult to identify without screening. In Oregon, only large hospitals are required to screen for hearing loss; infants born in smaller hospitals or non-hospital settings may not be regularly screened.

“This is prevention at its best,” said Dr. Jennifer Vines, Deputy Health Officer for Washington County, “because it is simple, non-invasive, and helps to ensure children are identified early as needing extra support.” Before newborn hearing screening programs, children with hearing loss often were identified too late and would graduate from high school with low reading and language levels. Hearing is essential to child development – for language acquisition, speech, social-emotional development and learning. With early detection, children with hearing loss can reach the same milestones as their hearing peers.

Screening takes less than ten minutes to complete. It is the first step to see if a baby may need additional hearing testing. If your infant did not receive a newborn hearing screen, contact Nena Newsom, Washington County Public Health, at 503-846-4872, to schedule an appointment.

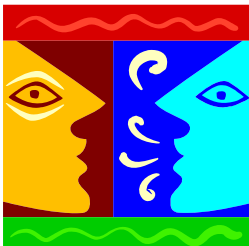
Reduce Waste, Save Natural Resources And Energy, and Prevent Pollution It's Easy! Recycle At Work

The Recycle at Work program provides free, customized assistance to all types of businesses throughout the Portland metro area. Our Business Recycling Specialists can help you:

- Identify items that can be recycled at work
- Find a hauler to provide recycling services
- Form a “green team” to lead recycling efforts
- Train your employees and custodial staff
- Promote sustainability with tips for waste reduction
- Earn recognition for your recycling success
- Get information on sustainable purchasing



To learn more about how to recycle in your workplace, call 503-846-8609 or go to www.WashingtonCountyRecycles.org



CPOTalk Email News and Discussion Group

CPOTalk, an email news and discussion group for CPO members, focuses on land-use and livability issues in Washington County. Sign up to receive the latest information on land use and livability in Washington County. Regular postings include articles from local newspapers, state legislative updates, and local/regional/state reports relating to land use and livability.

To sign up for *CPOTalk*, send an email to cpo.wash.co@oregonstate.edu with your name, street address, zipcode and email address. We'll do the rest!

For more information, contact Margot Barnett, CPO Coordinator, 503-821-1114 or margot.barnett@oregonstate.edu.



Oregon State University Extension Service
 Washington County
 155 N. First Ave
 Suite #200
 Hillsboro, OR 97124-3072

NONPROFIT ORG.
 US POSTAGE
 PAID
 PORTLAND OR
 PERMIT NO 1

RETURN SERVICE REQUESTED

**CPO 9 NEWSLETTER
 TIME SENSITIVE**

Public Affairs Forum

Time: Mondays 11:15 am - 1 pm except on major holidays.

Location: Tanasbourne Old Spaghetti Factory, 18925 NW Tanasbourne Dr, Hillsboro 97124, 503-617-7614

For a map go to: <http://washingtoncountyforum.org/time-place>.

You are welcome and encouraged to attend.



December 5, 2011

Topic: The economic impact of Intel.

Speaker: Bill MacKenzie, Communications Manager for Intel.

December 12, 2011

Topic: Holiday Music.

First singers: Sunset Madrigals, an elite group of 16 mostly seniors singers.

Second singers: The Elmonica Singing Sensations, a group of 12 elementary school students.

For last minute updates and additional information about the forum, visit: www.washingtoncountyforum.org
