



CPO #9 NEWSLETTER



Citizen Participation Organization #9

Washington County

Serving: Hillsboro and Orenco

November 2011

CPO Newsletters available on the web at <http://extension.oregonstate.edu/washington/cpo-9-hillsboroorenc>

CPO 9 Map: http://extension.oregonstate.edu/washington/sites/default/files/cpo9_0.pdf



Oregon State University Extension Service supports CPOs through an intergovernmental agreement with Washington County, the sole funder of the CPO program. Extension CPO coordinators provide information on land use and livability issues, resource referrals, and work with CPO members to increase understanding of public policy and decision-making processes.

This newsletter material was developed by representatives of your local CPO and is forwarded to you as part of the Extension Service's support to citizen involvement in local government. Washington County administration, departments, and/or officials claim no responsibility, expressed or implied, for the content of this document.

CPO 9 STEERING COMMITTEE

Chair	Albert Stanfield
Vice Chair	Shaun Starr
Secretary	Heather Robinson Kimberly Culbertson
Members at Large	Tom Black Glenna Dryden

www.cpo9friends.org
email: cpo9chair@gmail.com

CPO COORDINATOR

Margot Barnett, OSU Faculty
Phone: 503-821-1114
Fax: 503-648-9931
Email: margot.barnett@oregonstate.edu
OSU Washington County Office
155 N. First Ave.
Suite #200
Hillsboro, OR 97124-3072

To review copies of the East Hillsboro Community Plan, go to

<http://www.co.washington.or.us/LUT/Division/s/LongRangePlanning/Publications/east-hillsborocp.cfm>

Citizen Participation Organization 9

Monday, November 14, 7:00PM

Public Services Building, Room 140, 155 N First Ave, Hillsboro

Between Main and Lincoln Streets

Please use the back (west) doors, and park in the lot west of railroad tracks.

AGENDA

7:00 Welcome, introductions and agenda review

7:10 Where are you going with all that dirt? - CPO 8 (North Plains, Helvetia, Mountindale, Dixie Mountain, Pumpkin Ridge) has been exploring concerns about soil fill activities that impact all Washington County residents. Tonight's discussion will continue that conversation and help us understand what policies are currently in place to deal with future land development offhaul spoils within the County, and where all that dirt is eventually going to land.

Speakers will include:

- Dean Moberg, District Conservationist, USDA-Natural Resources Conservation Service (NRCS)
- Jim Johnson, Land Use and Water Planning Coordinator, Oregon Department of Agriculture
- Stephen Roberts, Communications Coordinator, Washington County Department of Land Use and Transportation

8:10 CPO 9 Representation on Hillsboro Airport Issues Roundtable (HAIR) – Kimberly Culbertson

Report on Steering Committee selection of CPO 9 representative to HAIR, brief update on November 2nd meeting of the Hillsboro Airport Issues Roundtable (HAIR) and call for nominees for an alternate representative to the HAIR.

8:30 Committee for Citizen Involvement Update – Albert Stanfield

8:40 Open forum and announcements - A time for community members to bring up issues of concern, ideas for future meeting agendas or announce upcoming events of interest.

This newsletter is printed on 30% recycled paper with soy ink.

Oregon State University Extension Service offers educational programs, activities, and materials—without regard to race, color, religion, sex, sexual orientation, national origin, age, marital status, disability, and disabled veteran or Vietnam-era veteran status—as required by Title VI of the Civil Rights Act of 1964, and Title IX of the Education Amendments of 1972 and Section 504 of the Rehabilitation Act of 1973. Oregon State University Extension Service is an Equal Opportunity Employer.

Brownfields Programs Spark Reinvestment in Beaverton Park

Restoration work will transform a former gas station lot into green space at Beaverton's Eichler Park. The transformation comes through the successful partnership between Metro, the Tualatin Hills Park & Recreation District, Business Oregon and the Oregon Department of Environmental Quality. The brownfield cleanup will add two-thirds of an acre to the park.

To learn more visit: <http://bit.ly/rgEmaT>

Opt In asks: 'How do you get around?'

How important are projects that improve bicycling, walking and public transportation in your community? Metro wants your opinion. Next year, Metro and its partners will be developing a regional plan for active transportation. With an anticipated influx of a million new residents over the next two decades, it is vital to plan ahead so all residents have access to safe, easy and affordable transportation options.

To learn more and participate in the survey visit: <http://bit.ly/qPYVXa>

Residents add ideas for the Southwest Corridor Plan

Great ideas from residents will help inform the scope of the Southwest Corridor Plan – things like the importance of walkable town centers that include space for housing and businesses; preserved greenspace, including parks and natural areas; bicycle access; and ensuring that future growth is planned for on a community level.

Learn more at: <http://bit.ly/nXTXfa>

Help Reduce Air Pollution Near Schools

No one wants children breathing exhaust, and yet a lot of idling takes place at schools, where buses and cars line up to drop off and pick up children. Because a single vehicle dropping off and picking up kids at one school puts three pounds of pollution into the air per month, stopping unnecessary vehicle idling is one way to reduce air pollution.



If you are interested in implementing an idle-reduction program at a school or adapting it for another organization, DEQ can help with advice and consultation. More information is at <http://www.deq.state.or.us/eq/vip/whatyoucando.htm> or contact: Marcia Danab, Communications & Outreach, 503-229-6488.



Oregon Environment Fall 2011

Washington County Disability, Aging & Veteran Services Wants Your Input – Survey on Retirement and Service Needs

Washington County Disability, Aging & Veteran Services (DAVS) is seeking input from the community to include in the development of their three-year strategic plan. The new strategic plan will be for 3 years beginning in 2012 through 2014. The 3-year plan will address the needs and the gaps in services for seniors, veterans and people with disabilities. DAVS is interested in the opinions of Washington County residents about retirement and what services and activities they need and want as they grow older. Anyone interested can also take a short survey by going to

<http://www.surveymonkey.com/s/CVL58YN>.

For more information about the planning process, or if you would like a paper copy of the survey, please contact Janet Long at (503-846-3081) or E-mail to: janet_long@co.washington.or.us.

Opportunity to Comment on Water Quality Pollution Limits and Plans for the Tualatin River Subbasins

The Department of Environmental Quality (DEQ) is seeking comments on draft documents describing pollution limits and plans to improve water quality in the Tualatin River subbasins and ensure streams are healthy for fish and wildlife, and safe for fishing and swimming. DEQ has identified three problems for water quality in stream reaches in the Tualatin River subbasin: temperature, phosphorus and ammonia.



The Federal Clean Water Act requires DEQ to develop plans with goals and pollution control targets for improving water quality in these watersheds. DEQ is doing this by first establishing limits known as Total Maximum Daily Loads, known as TMDLs for each pollutant entering the water system.

DEQ encourages individuals with computer capabilities to view the draft TMDL documents and fact sheets on the DEQ Web page at: <http://bit.ly/qbiR3U>. Draft documents and related materials are available for review at: DEQ Northwest Region Office, 2020 SW 4th Avenue, Suite 400, Portland, OR 97201, Contact: Diana Adams 503-229-5552.

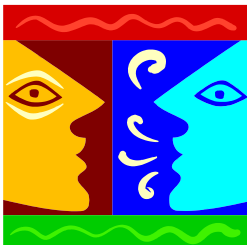
You can provide comments in person at a public hearing, **6:00 - 8:00 p.m., Wednesday, Nov. 16, 2011** at Tualatin Valley Fire and Rescue, North Operating Center, 20665 SW Blanton St, Aloha, OR, 97007. There will be a brief information session starting at 6:00 pm that will precede the formal hearing. Comments are due at 5 p.m., Wednesday, Nov. 30, 2011. Send written comments to: Avis Newell, DEQ Northwest Region Office, 2020 SW 4th Avenue, Suite 400, Portland, OR 97201, by email at Newell.Avis@deq.state.or.us or fax to 503-229-6957.

City of Hillsboro Seeking Volunteers for Boards and Commissions

Do you want to influence the future of Hillsboro and get involved in the community and operations of your local government? The Hillsboro City Council believes the community is best served when diverse representations of volunteers participate on the City's boards and commissions.



The City of Hillsboro is currently accepting applications from residents for positions on the Budget Committee, Hillsboro Arts and Culture Council, Historic Landmarks Advisory Committee, Library Board, Parks and Recreation Commission and Planning and Zoning Hearings Board. **For more information about eligibility, and the roles of the boards, committees and commissions visit www.ci.hillsboro.or.us/CommitteesBoards or call the City Recorder's Office at 503-681-6117. Applications due November 11, 2011.**



CPO Email News and Discussion Group

CPOTalk, an email news and discussion group for CPO members, focuses on land-use and livability issues in Washington County. Sign up to receive the latest information on land use and livability in Washington County. Regular postings include articles from local newspapers, state legislative updates, and local/regional/state reports relating to land use and livability.

To sign up for *CPOTalk*, send an email to cpo.wash.co@oregonstate.edu with your name, street address, zipcode and email address. We'll do the rest!

For more information, contact Margot Barnett, CPO Coordinator, 503-821-1114 or margot.barnett@oregonstate.edu.

CITY OF HILLSBORO LAND USE AND DEVELOPMENT APPLICATIONS

CASE #/ZONE	APPLICANT/LOCATION	PROPOSED ACTION	STATUS
AN 2-11 ZC 5-11 Price	City of Hillsboro Located on the western side of NW 10 th Ave, south of NW Padgett Rd, north of NW Darnielle St.	Request for annexation of one property about 0.35 acres into the City Limits of Hillsboro and a City-initiated request for approval of a zone change from County R-9 to City R-7 Single Family Residential (7000 sq. ft. minimum lot size) on the same property.	Final Approval 9/02/11
DR 19-11 Subway	Thomas Sconzo on behalf of Subway North of SW Walnut St, south of SW Oak St, east of SW 17 th Ave, west of SW Armco Ave.	Proposal to construct a new, stand-alone Subway restaurant with drive-thru and sit-down food service. The proposed building would be about 1800 square feet and would be located within the existing parking lot directly north of 1400 SW Oak St.	Pending
Downtown core conversion of 1-way grid back to 2-way travel	Main St and Lincoln St from 1 st Ave to 6 th Ave. 2 nd through 5 th Avenues from Lincoln St to Walnut St.	Review a Draft City Council Ordinance regarding the proposed conversion of streets in Downtown Hillsboro from one-way to two-way streets.	PC Recommendation forwarded to City Council
DR 25-11 Intel Ronler Acres – D1X Central Utility Building (CUB4)	Intel Corp North of NE Butler St, south of NW Evergreen Pkwy, east of NW Shute Rd, west of NW 229 th Ave.	Proposal to construct a new two-level, 99,703 square-foot central utility building (CUB4) intended to support the new D1X fabrication building. The new CUB4 will be constructed within the same building footprint as the RS3 building, which is being demolished. The application also includes interconnecting trestles between the D1X and CUB 4 buildings, and cooling towers.	Pending
DW 2-11 Withdrawing previously annexed properties from Tualatin Valley Water District	City of Hillsboro	City Council to consider a request to withdraw properties previously annexed into the Hillsboro city limits, from the Tualatin Valley Water District (TVWD).	Tentative Approval 9/20/11. Pending State Acceptance.
ZC 6-11 Island Annexations Area 6	City of Hillsboro Subject properties are located northeast of the Jackson Bottom Wetlands Preserve, and southwest of SE 7 th Ave.	Consider a City-initiated request for approval of a zone change from County IND Industrial to City R-7 Single Family Residential on portions of two properties.	Tentative Approval 10/5/11.
ZC 7-11 Hillsboro and Rickett Properties	City of Hillsboro Northeast of the Jackson Bottom Wetlands Preserve, and southwest of SE 7 th Ave.	Consider a City-initiated request for approval of a zone change from County IND Industrial to City M-2 Industrial on three properties. The subject properties were previously annexed into the city limits.	Tentative Approval 9/7/11. Pending State Acceptance.
AN 3-11 and ZC 8-11 Thompson	City of Hillsboro Located generally south of SE Witch Hazel Rd, west of SE 45 th Ct, east of SE 48 th Pl.	Consider a request for annexation of one property, about 0.87 acres into the City Limits of Hillsboro. Second hearing to consider a City-initiated request for approval of a zone change from County R-9 Residential to City R-7 Single Family-Residential and from County R-15 Residential to City A-1 Duplex Residential on the same property.	Tentative Approval 9/20/11.
DR 33-11 NWRESD Solar Panels	Soderstrom Architects 759 SE Washington Street	Proposal to add several solar panels to the roof of the existing building.	Approved 10/6/11.

continued

CASE #/ZONE	APPLICANT/LOCATION	PROPOSED ACTION	STATUS
MLP 3-11 Orengo Woods Crossing	The Trust for Public Land North of NW Quatama Rd and East of NW 225 th Ave	Proposal to divide the property into three smaller parcels for: nature park, future development, historic McDonald House	Pending.
MLP 2-11 Tokola 4 th and Main	City of Hillsboro and Metro 350 E Main St	Proposal to divide the site into two smaller parcels to maintain the existing bank building on its own lot	Approved 10/11/11.

Hillsboro Planning Department, 150 E. Main St. Fourth Floor, Hillsboro, Oregon. 503-681-6153

Planning and Zoning Hearings Board; Planning Commission and City Council meetings are held in the Auditorium, Hillsboro Civic Center, 150 E. Main St, Hillsboro. www.ci.hillsboro.or.us/Planning

Order of testimony: applicant; other proponents; opponents; applicant's rebuttal. Refer to DR Monthly Report on the City of Hillsboro website at <http://www.ci.hillsboro.or.us/Planning/DevReviewMonthReport/Default.aspx>

Tree for All: Community Stream Planting Challenge

Two million trees will be planted in 20 years within the Tualatin River Watershed as part of the Healthy Streams Plan (<http://bit.ly/qMbQHf>). Streams lined with native vegetation provide cleaner, cooler water, better flood management, and fish and wildlife habitat. It's good for the water and fish, and it's good for people and our community, too!



Tree for All is a partnership of the Cities within the Tualatin River Watershed, Clean Water Services, SOLV, Friends of Trees, the Wetlands Conservancy, Raindrops to Refuge and helpful volunteers.

- Information and Requirements for Cities at <http://bit.ly/pwEiXi>
- Streamside Stewardship Program for Landowners at <http://bit.ly/q37wNa>

Nearby Planting Events

Date/Time	Location	Volunteer
Saturday, November 5, 9 a.m. - 1 p.m.	Valley Memorial Park, Hillsboro	Friends of Trees
Saturday, December 3, 9 a.m. - 1 p.m.	Barrows Meadow, Beaverton	Friends of Trees
Saturday, February 4, 9 a.m. - 1 p.m.	Barrows Meadow, Beaverton	Friends of Trees
Saturday, March 10, 9 a.m. - 1 p.m.	Valley Memorial Park, Hillsboro	Friends of Trees
Saturday, March 24, 9 a.m. - 1 p.m.	Murray Hill, Beaverton	Friends of Trees

Friends of Trees - <http://www.friendsoftrees.org/calendar>

GO GREEN, SAVE A TREE! The CPO program coordinators are looking at ways to reduce printing and postage costs and to make the program more sustainable. To do that we need your help by signing up to receive the newsletter electronically. We call this the *CPO NewsAlert*.

It's simple, just send an email to cpo.wash.co@oregonstate.edu with your name, street address, zipcode and email address to make the necessary changes. You will receive an email with a link to the CPO website with your current newsletter. Thank you for helping out!



County Boards Seek Candidates

Boards, committees and commissions advise the Board of Commissioners on matters of interest to people who live and work in Washington County. Committees themselves do not pass ordinances or establish policy; their purpose is to study issues and make recommendations. Commission members are volunteers appointed by the County Board of Commissioners. Members must be residents of Washington County. Serving on an appointed board or commission is a great way for Washington County residents to participate in decisions that affect them and to learn more about how local government works.

Nominations are being sought for these committees for a six-week period or until filled. Staff will keep the Commissioners informed of applications received and of approaching deadlines. There will be an opportunity for the Board to discuss appointments at a work session before scheduling any formal action. The application deadline is **November 22, 2011, or when all vacancies are filled**. The applications form and additional information can be found on the Boards and Commissions Web site <http://www.co.washington.or.us/CAO/BoardsCommissions/index.cfm>, or by calling or by calling (503) 846-8685.

The following boards are currently seeking applications for new members:

Enhanced Sheriff Patrol District Budget Committee (2 vacancies, not appointed by Commissioner District)

Reviews the proposed budget developed for the Enhanced Sheriff's Patrol District in unincorporated Washington County.

Membership: Board of Commissioners plus five residents of the county. The five residents must live in the ESPD. The Committee meets twice each May. *Term Length:* 3 years

Urban Road Maintenance District Budget Committee (2 vacancies, not appointed by Commissioner District)

Reviews the proposed budget developed for the Urban Roads Maintenance District in unincorporated Washington County.

Membership: Board of Commissioners plus five residents of the county. The five residents must live in the URMD. The Committee meets twice each May. *Term Length:* 3 years

North Bethany County Service District Budget Committee (5 vacancies, not appointed by Commissioner District)

Reviews the proposed budget developed for the North Bethany County Service District in unincorporated Washington County.

Membership: Board of Commissioners plus five residents of the county. The five residents must live in the NBCSD. The Committee meets twice each May. *Term Length:* 3 years

Fair Board (1 term to expire 12/31/11)

The Fair Board's primary function is to oversee the planning, preparation and production of the County Fair. The Fair Board will develop both short and long-term plans for the promotion and production of the County Fair and provide input to the County's Facilities Maintenance Plan of the Fairgrounds. The Fair Board meets monthly.

Membership: The Fair Board is comprised of seven members that are selected from a variety of interests determined by the Board of Commissioners, including: Agriculture, Livestock, Youth/Education, Exhibitors/Vendors, Urban Agriculture. In lieu of a citizen representative, one member may be from the Board of Commissioners. The Committee meets once each month. *Term Length:* 3 years

Fairgrounds Advisory Committee – 4 vacancies

The Fairgrounds Advisory Committee provides input on the priorities and development of the Fairgrounds Master Plan, and other plans including: capital projects, maintenance, non-fair marketing and other strategic initiatives. As advocates, this committee works with local partners and the community at-large to communicate and encourage participation in Fairground developments.

Membership: Nine members who represent the county geographically and in fields of interest or occupation. Two members are ex officio: a member of the Board of Commissioners and the President of the Fair Board (or designee).

Meeting Times: To Be Determined (TBD) *Term Length:* 2 years

Cultural Coalition of Washington County (6 terms to expire 12/31/11)

CCWC administers distribution of any state funds distributed to Washington County from the Community Cultural Participation Grant Program of the Oregon Cultural Trust. The CCWC distributes funds through a competitive process to Washington County based organizations and artists to address priorities identified in the Washington County Cultural Plan.

County Boards Seek Candidates (*continued*)

Membership: Between nine and fifteen members who reside in Washington County or are members of a business or organization significantly involved in arts, heritage or humanities activities in Washington County. *Term Length:* 3 years

Homeless Plan Advisory Committee (1 vacancy, 5 terms to expire 12/31/11)

The Homeless Plan Advisory Committee will be comprised of members who have authority within their agency/jurisdiction to make policy and budget decisions that impact the community's housing and supportive service system. The Committee will provide high-level oversight to the implementation of the 10-Year Plan to End Homelessness, encourage collaborative partnership building, provide guidance to the annual work plan, work to create resources and funding, and promote and sustain the vision and leadership of the 10-Year Plan. The committee will be advisory to the county Homeless Program Coordinator, the Director of Housing Services, the County Administrator, and the Board of County Commissioners.

Membership: The 17-member committee includes a representatives from each of the following categories: Washington County Commissioner official, a mayor or city councilor, philanthropy, business, Housing Authority of Washington County, a nonprofit housing provider, a nonprofit service provider, Washington County Sheriff's Office, Washington County Community Corrections, state or federal entitlement/mainstream resource programs, a representative from the two major hospitals, a representative from the faith community, 3 citizens at-large and a homeless/formerly homeless consumer. *Term Length:* 3 years

Rural Roads Operations & Maintenance Advisory Committee (1 vacancy, 5 regular and 1 alternate terms to expire 12/1/11)

RROMAC studies rural road operations and maintenance concerns in Washington County, works with County Staff to develop program and funding alternatives and makes recommendations to the Board of County Commissioners.

Membership: Ten members and two alternates who reside or have business interests in the county. The Board of Commissioners also appoints one of their members to be on the committee although they are not an official member. Members represent different groups that have an interest in rural roads. *Time Commitment:* 2 hours per month *Term Length:* 4 years

Urban Roads Maintenance District Advisory Committee (2 terms to expire 1/1/12, 2 alternate vacancies)

The Urban Road Maintenance Advisory Committee (URMDAC) advises the board and staff on matters related to road maintenance provided by the URMD. This group reviews and makes recommendations regarding service levels and annual work programs, assists in evaluating the cost effectiveness and efficiency of URMD, and advises on continuation of URMD and/or other long-range funding opportunities for road maintenance.

Membership: Board of Commissioners plus five residents of the county. Each County Commissioner appoints one member. The five residents must live in the URMD. *Time Commitment:* 2 hours per month *Term Length:* 3 years

Open House for Aloha-Reedville Study and TV Highway Corridor Plan

Washington County, the Oregon Department of Transportation (ODOT) and the City of Hillsboro invite the community to an open house on **Wednesday, November 2 from 4:00 to 7:00 p.m.** at Aloha High School, 18550 SW Kinnaman Road in Aloha, to learn more about these recently launched projects. There will be short presentations at 4:30 and 6 p.m.

The Open House provides attendees an opportunity to:

- Learn more about the project backgrounds and what can be expected from these studies;
- Review what the project staff is learning about the community and help fill in the gaps; and
- Provide project staff with input regarding what is working in the community, where barriers to achieving the community's vision exist, and how those barriers might be changed to opportunities.

“We need input from our residents to help us better understand the community's dynamics, its aspirations, and how to achieve them,” said Andrew Singelakis, Washington County's Director of Land Use and Transportation. Adolph 'Val' Valfre, Jr., the County's Director of Housing Services, added “We continue to look for ways to engage community members who do not typically participate in these processes—we want to hear from all voices within the community.”

For those who cannot attend the open house, all presentation materials and additional information on both projects are available on the project web sites: www.co.washington.or.us/alohareedville and www.tvhighway.org.



Oregon State University Extension Service
 Washington County
 155 N. First Ave
 Suite #200
 Hillsboro, OR 97124-3072

NONPROFIT ORG.
 US POSTAGE
 PAID
 PORTLAND OR
 PERMIT NO 1

RETURN SERVICE REQUESTED

**CPO 9 NEWSLETTER
 TIME SENSITIVE**

Hillsboro Airport Issues Roundtable Meets Wednesday, November 2

The Hillsboro Airport Issues Roundtable meets Wednesday, Nov 2, 2011 from 6:30 to 7:30 p.m at the Hillsboro Civic Center, Rooms 113 B & C 150 E Main St, in downtown Hillsboro (note that this quarter’s meeting starts an hour later than usual).

The main agenda topics will be a presentation and discussion on air emissions associated with the airport and an update on the recent Ninth Circuit Court ruling on the third runway environmental assessment. Everyone is invited, and public comment is encouraged at the meeting. For the complete meeting agenda, please go to http://www.portofportland.com/hair_agenda.aspx. Free parking is available, or take TriMet MAX Blue Line to the Hatfield Government Center stop. For More Information contact Rachel Wray, environmental outreach manager, 503.415.6047 or Rachel.Wray@portofportland.com.

Public Affairs Forum Topics

Time: Mondays 11:15 am - 1 pm except on major holidays.
Location: Tanasbourne Old Spaghetti Factory, 18925 NW Tanasbourne Dr, Hillsboro 97124, 503-617-7614
 For a map go to: <http://washingtoncountyforum.org/time-place>.
 You are welcome and encouraged to attend.



November 7, 2011

Topic: Cedar Mill/Bethany Library Director, updates on library branches and the needs they fill in our economic climate.
 Speaker #1: Peter Leonard, Executive Director, Cedar Mill Library

For last minute updates and additional information about the forum, visit: www.washingtoncountyforum.org
