

SMALL ANIMALS



CAVIES

Superintendent: Michelle Carlile

SPECIAL CAVY AWARDS

GCH Cavy Showman
By Les Schwab Tire Center, Newberg
GCH 4-H Cavy
By Joe & Leslie McLeod, Yamhill
Cavy Herdsmanship
By Bud & Mercy Garside, Sherwood
LG Animal 4-H Master Showman Participant - Cavy
By Bacon Bits & Friends 4-H Club, Newberg

Read Animal Science Rules and Health Requirements.

Each exhibitor may exhibit two animals per class number but cannot exceed seven animals per department. Permanent identification on cavies is recommended. All cavies must pass health check before being allowed in barn. Cavies less than 8 weeks old will not be permitted in the barn. No animals will be removed before release time except in case of illness. Long sleeves are required for showmanship and breed classes. All exhibitors must bring their own carpet squares or mats for use at the show table. Frozen water bottles are recommended for use in pens while at County Fair.

CAVY SHOWMANSHIP CLASSES:

762 500 001 Junior, Grades 4-6 *County Only*
762 500 002 Intermediate, Grades 7-9
762 500 003 Senior, Grades 10-12

Note: Fill in blank in class number () with one of the following numbers.

1. Junior Sow, born after May 1, 2009, minimum of 12 oz. through 22 oz.
2. Junior Boar, born after May 1, 2009 minimum of 12 oz. through 22 oz.
3. Intermediate Sow, born March 1 to April 30, 2009, over 22 oz., maximum 32 oz.
4. Intermediate Boar, born March 1 to April 30, 2009, over 22 oz., maximum 32 oz.
5. Senior Sow, born before March 1, 2009, over 32 oz
6. Senior Boar, born before March 1, 2009, over 32 oz.

762 101 0_0 Abyssinian
762 102 0_0 Abyssinian Satin
762 103 0_0 American
762 104 0_0 American Satin
762 105 0_0 Coronet
762 106 0_0 Peruvian
762 107 0_0 Peruvian Satin
762 108 0_0 Silkie
762 109 0_0 Silkie Satin
762 110 0_0 Teddy
762 111 0_0 Teddy Satin
762 112 0_0 Texel
762 113 0_0 White Crested
762 114 0_0 Crossbred

POULTRY

Superintendent: Stacey Mayhew, 603-472-1191
Jr. Superintendent: Molly Knutz, Seth Mayhew

SPECIAL POULTRY AWARDS

GCH 4-H Poultry Showman
By Kidding Around 4-H Club, Amity
RGCH 4-H Poultry Showman
By Jim & Vickie Smith, Newberg
CH Senior Poultry Showman
By Homesteaders 4-H Club, Yamhill
RCH Senior Poultry Showmen
By Donna Jensen, Wilsonville
CH Intermediate Poultry Showman
By Bacon Bits & Friends 4-H Club, Newberg
RCH Intermediate Showman
By Donna Jensen, Wilsonville
CH Junior Poultry Showman
By Ron Pittman, McMinnville
RCH Junior Poultry Showman
By Donna Jensen, Wilsonville
GCH 4-H Poultry
By T & E General Store Inc, Yamhill
CH 4-H Market Chicken Pen
By Wilco, Mt. Angel
CH 4-H Market Poultry 4-H/FFA Competing
By Mac City Chickens, McMinnville
RCH 4-H Market Poultry 4-H/FFA Competing
By Mac City Chickens, McMinnville
Poultry Herdsmanship
By Tony & Liz Perez, Newberg
Top Senior Poultry Judging
By Donna Jensen, Wilsonville
Top Intermediate Poultry Judging
By Donna Jensen, Wilsonville
Top Junior Poultry Judging
By Donna Jensen, Wilsonville
Sm Animal Master Showman Participant – Poultry
By Ron Pittman, McMinnville
GCH 4-H Pigeon Showman
By Bacon Bits & Friends 4-H Club, Newberg
GCH 4-H Pigeon
By John & Nancy Nyberg, Newberg
Sm Animal Master Showman Participant-Pigeon
Bacon Bits & Friends 4-H Club, Newberg

Read Animal Science Rules and Health Requirements.

Each exhibitor may exhibit two animals per class number but cannot exceed seven animals per department. All birds must have ID numbers and all birds must pass health check before being allowed in barn.

Breeds entered in the American Poultry Association (APA) classes are based on those birds found exclusively in the APA book titled, Standards of Perfection. The non-APA standard bred large fowl class would include birds found in standards other than APA, like the British or Japanese Standards. The crossbred large fowl class

would include known backyard crosses, sex links and birds associated with OSU Animal Sciences Dept/Oregon Fryer Commission Pen of Fryers Contest.

All pairs and trios will be pen judged, except market chickens. Birds that are de-beaked or have clipped wings will be placed at the judge's discretion. Long sleeves are required for showmanship and breed classes. The new Oregon 4-H Showmanship procedure (4-H 1503) will be used.

CHICKENS

POULTRY SHOWMANSHIP CLASSES:

731 500 001 Junior, Grades 4-6 *County Only*

731 500 002 Intermediate, Grades 7-9

731 500 003 Senior, Grades 10-12

Note: Fill in blank in class number () with one of the following numbers.

1. Pullet, hatched this year
2. Cockerel, hatched this year
3. Hen, prior to this year's hatch
4. Cock, prior to this year's hatch

731 101 0_0 *APA Standard Bred Large Fowl

731 101 1_0 **Non-APA Standard Bred Large Fowl

731 101 2_0 ***Cross-Bred Large Fowl

*Breeds entered in the American Poultry Association (APA) classes are based on those birds found exclusively in the APA book titled Standards of Perfection.

**The non-APA standard bred large fowl class would include birds found in standards other than APA, like the British or Japanese Standards.

***The crossbred large fowl class would include known backyard crosses, sex links and birds associated with the OSU Animal Sciences Dept./Oregon Fryer Commission Pen of Fryers Contest.

731 102 0_0 APA and ABA Standard Bred - Bantam

731 102 1_0 Non-Standard Bred - Bantam

731 102 2_0 Cross-Bred - Bantam

MARKET CHICKEN CLASSES

(See Auction Rules for weight breakdown)

731 300 010 Broiler/Fryer Pen of three, (under 7 weeks)

731 300 020 Roaster Pen of three, (8 to 16 weeks of age)

731 200 010 Pen of Laying Hens three hens in production. Hens should not have been shown in individual classes and count as one entry. To be scored on the following criteria:

Visible signs of production 40 points

Uniformity 30 points

Condition:

Vigor 10 points

Cleanliness 10 points

Feathering 10 points

OTHER FOWL CLASSES:

731 103 0_0 APA Standard Bred Duck

731 103 1_0 Commercial Non-Standard Breed and/or Crossbred Duck

731 104 0_0 APA Standard Bred Goose

731 104 1_0 Commercial Non-Standard Breed and/or Crossbred Goose

731 105 0_0 APA Standard Bred Turkey (Bronze)

731 105 1_0 Commercial Non-Standard Breed and/or Crossbred Turkey (White)

731 106 0_0 Other (no emus or ostriches)

Note: Fill in the blank in the class number () with one of the following numbers:

- 1 Young Female, hatched this year.
- 2 Young Male, hatched this year.
- 3 Old Female, prior to this year's hatch.
- 4 Old Male, prior to this year's hatch.

EGGS

Eggs will be judged on uniformity, cleanliness and freedom from blemishes and abnormalities. Eggs should be delivered during the poultry show.

Note: Fill in blank in class number () with one of the following numbers.

- 1 Chicken
- 2 Duck
- 3 Turkey
- 4 Other Species

731 40_ 010 White Eggs, one dozen

731 40_ 020 Brown Eggs, one dozen

731 40_ 030 Other Eggs, one dozen

OTHER FOWL

Note: Fill in blank in class number () with one of the following numbers.

1. Young Female, hatched this year
2. Young Male, hatched this year
3. Old Female, prior to this year's hatch
4. Old Male, prior to this year's hatch

731 103 0_0 APA Standard Bred Duck

731 103 1_0 Commercial Nonstandard Breed and/or Crossbred Duck

731 104 0_0 APA Standard Bred Goose

731 104 1_0 Commercial Nonstandard Breed and/or Crossbred Goose

731 105 0_0 APA Standard Bred Turkey

731 105 1_0 Commercial Nonstandard Breed and/or Crossbred Turkey

731 106 0_0 Other (no emus or ostriches)

PIGEONS

PIGEON SHOWMANSHIP CLASSES:

732 500 001 Junior, Grades 4-6 *County Only*

732 500 002 Intermediate, Grades 7-9

732 500 003 Senior, Grades 10-12

Note: Fill in blank in class number () with one of the following numbers.

1. Young Hen
2. Young Cock
3. Old Hen
4. Old Cock

- 732 101 0_0 Homer
 732 102 0_0 Performing
 732 103 0_0 Fancy
 732 104 0_0 Utility
 732 105 0_0 Doves

RABBITS

Superintendent: Michelle Carlile

Jr. Superintendent: Andrea Hunter, Andrea Drew

SPECIAL RABBIT AWARDS	
GCH 4-H Rabbit Showman	<i>By Ron Pittman, McMinnville</i>
RGCH 4-H Rabbit Showman	<i>By Marty Carlson, Neotsu</i>
CH Senior Rabbit Showman	<i>By Nyberg Rabbitry, Newberg</i>
CH Intermediate Rabbit Showman	<i>By The Courtney Family, Newberg</i>
CH Junior Rabbit Showman	<i>By Narr Farm, Newberg</i>
GCH 4-H Rabbit	<i>By Nyberg Rabbitry, Newberg</i>
RGCH 4-H Rabbit	<i>By T & E General Store, Yamhill</i>
CH Rabbit Judge	<i>By Moreland Oil Co., McMinnville</i>
CH 4-H Rabbit Fryer Pen	<i>By Nyberg's Rabbitry</i>
CH Bred/Owned 4-H Market Rabbit	<i>By Scott & Tammy Bernards, Carlton</i>
RCH Bred/Owned 4-H Market Rabbit	<i>By Scott & Tammy Bernards, Carlton</i>
SM Animal 4-H Master Showman Participant – Rabbit	<i>By John & Nancy Nyberg, Newberg</i>
Rabbit Herdsmanship	<i>By Tony & Liz Perez, Newberg</i>

Read Animal Science Rules and Health Requirements.

Each exhibitor may exhibit two animals per class number but cannot exceed seven animals per department. Members may exhibit 2 rabbits in the same class or division.

All rabbits must pass health check before being allowed in barn. **Note:** Rabbits need to be entered in the appropriate age class. The age class at State Fair may be different than the age class shown in at the County Fair. Long sleeves are required for showmanship and breed classes. Any animals for sale or trade can be sold only through the Superintendent. A list of rabbits for sale with breed, ear numbers, and price must be given to the Superintendent. No animal may be removed before release time. Crossbreeds will be judged on

conformation and condition only. Rabbit market classes are to be judged on conformation, condition, and uniformity. Rabbits less than 8 weeks of age will not be permitted in the barn area. **All entries must be identified by a permanent tattoo in the left ear. No tattooing will done at fair time.** See Auction Rules for date and time of tattooing.

Frozen water bottles are recommended for use in pens while at the State Fair. Permanent identification is recommended. Members will provide their own carpet square or mat at the show table.

RABBIT SHOWMANSHIP CLASSES:

- 761 500 001 Junior, Grades 4-6 *County Only*
 761 500 002 Intermediate, Grades 7-9
 761 500 003 Senior, Grades 10-12

Note: Fill in blank in class number () with one of the following numbers.

HEAVYWEIGHTS

01 American	02 American Sable
03 Angora (Giant)	04 Beveren
05 Californian	06 Champagne D'Argent
07 Checkered Giant	08 Chinchilla (American)
09 Chinchilla (Giant)	10 Cinnamon
11 Creme D'Argent	12 Flemish Giant
13 Hotot	14 Lop (English)
15 Lop (French)	16 New Zealand
17 Palomino	18 Satin
19 Silver Fox	20 Crossbred

Note: Rabbits need to be entered in the appropriate age class at each county fair. The age class at State Fair may be different than the age class shown in at the county fair.

HEAVYWEIGHTS

- 761 1__ 010 Pre-Junior Doe, born after June 1, 2009
 761 1__ 020 Junior Doe, Born March 1 to May 31, 2009
 761 1__ 030 Intermediate Doe, born January 1 to February 28, 2009
 761 1__ 040 Senior Doe, born before January 1, 2009
 761 1__ 050 Pre-Junior Buck, born after May 31, 2009
 761 1__ 060 Junior Buck, born March 1 to May 31, 2009
 761 1__ 070 Intermediate Buck, born January 1 to February 29, 2009
 761 1__ 080 Senior Buck, born before January 1, 2009

LIGHTWEIGHTS

21 American Fuzzy Lop	22 Angora (English)
23 Angora (French)	24 Angora (Satin)
25 Belgian Hare	26 Britania Petite
27 Chinchilla (Standard)	28 Dutch
29 Dwarf Hotot	30 English Spot
31 Florida White	32 Harlequin
33 Havana	34 Himalayan
35 Jersey Wooley	36 Lilac
37 Lop (Holland)	38 Lop (Mini)
39 Mini Rex	40 Mini Satin
41 Netherland Dwarf	42 Polish
43 Rex	44 Rhinelander

45 Silver	46 Silver Marten
47 Tan	48 Thrianta
49 Other Lightweight Breeds & Light-weight Crossbreeds	

LIGHTWEIGHTS

- 761 1__ 100 Junior Doe, born after January, 2009
 761 1__ 110 Senior Doe, born before January, 2009
 761 1__ 120 Junior Buck, born after January, 2009
 761 1__ 130 Senior Buck, born before January, 2009

MARKET RABBITS

(To be judged on conformation and condition, all breeds competing.)

- 761 300 010 Fryer, born after May 7, 2008
 761 300 020 Pen of Three Fryers, three rabbits
 761 300 030 Roaster
 761 300 040 Pen of Three Roasters, three rabbits

PRODUCTION

- 761 200 000 Doe, with production records, must have kindled
 761 200 100 Buck with 4-H Production Records, must have been bred. (County Only)

RABBIT PELTS AND TANNED PRODUCTS

Each member is limited to a maximum of two pelts. They may be in the same class. They will be divided into subclasses by weight for judging – fryer pelts, 2-1/2 to 4 ounces; baker pelts, 4 to 8 ounces; and mature pelts, over 8 ounces. A champion pelt will be selected.

Freedom from holes, flesh or fat, mildew, hutch stains and general condition of the pelt will be considered as well as the density, texture, and quality of the fur.

Pelts must have been taken from rabbits owned by 4-H member during the current year and must have been skinned, stretched and prepared by the exhibitor.

RABBIT PELT CLASSES:

Note: Fill in the blank in the class number () with one of the following numbers:

- 1 Junior, Grades 4-6
- 2 Intermediate, Grades 7-9
- 3 Senior, Grades 10-12

- 761 400 01_ Raw Pelt, inside out tube stretched and dried
 761 400 02_ Tanned Pelt, split at belly and tanned flat
 761 400 03_ Tanned Rabbit Pelt, Product

Each member is limited to one production which has been tanned and made into a usable product by the member.

See Contest section for information on Rabbit Judging Contest

CAT & PET CLASSES

Superintendent: Wendy Piscitelli, 503-936-5096
Jr. Superintendent: Ariana Piscitelli

SPECIAL CAT AWARDS

- GCH 4-H Cat Showman
Bacon Bits & Friends 4-H Club, Newberg
 GCH 4-H Cat Best of Show
Bacon Bits & Friends 4-H Club, Newberg
 SM Animal Master Showman Participant – Cat
By Commissioner Leslie Lewis, McMinnville

Cats and pets in cages or suitable container must be carried onto the fairgrounds on the day of the show. No vehicles will be allowed to drive on the fairgrounds. **(See schedule for date and time.)** All cats and pets will be excused from the fairgrounds once judging is completed. **Decorated cages and Poster Education Exhibits must remain until the end of fair.**

Limit 2 cats per exhibitor. Proof of current rabies and distemper vaccinations for cats must be shown to the 4-H Superintendent upon registration and health check. Shots must have been given 30 days prior to show date. Cats may be purebred or household pets. Cats do not need to be registered or pedigreed in order to enter the 4-H Cat Show.

Exhibitors may enter one Showmanship class and as many additional classes as their cats qualify for. There will be one Champion Household Pet and one Champion Purebred who will compete for Best in Show. Showmanship will be judged on appearance of member, appearance of cat, knowledge of cat, knowledge of cat care and how the cat is handled.

CAT SHOWMANSHIP CLASSES:

- 765 500 001 Junior, Grades 4-6
 765 500 002 Intermediate, Grades 7-9
 765 500 003 Senior, Grades 10-12

CAT CLASSES:


- 765 100 100 Kittens, 4-8 months
 765 100 110 Adult Short Hair
 765 100 120 Adult Long Hair
 765 100 130 Senior Cat (over 8)
 765 100 140 Purebred Kitten 4-8 months
 765 100 150 Purebred Adult Short Hair
 765 100 160 Purebred Adult Long Hair
 765 100 170 Cat Poster Educational Exhibit
 765 100 180 Action Demo/Talented Cat Trick
 765 100 190 Costume Contest
 765 120 000 Cage decorations – cages will not be provided, decorations will be judged on creativity and comfort for cat.

PET SHOWMANSHIP CLASSES:

- 794 500 001 Junior, Grades 4-6
 794 500 002 Intermediate, Grades 7-9
 794 500 003 Senior, Grades 10-12

PET CLASSES:

- 794 100 010 Goldfish
- 794 100 020 Turtles
- 794 100 030 Frogs
- 794 100 040 Gerbils
- 794 100 050 Hamsters
- 794 100 060 Rats
- 794 100 070 Mice
- 794 100 080 Reptiles
- 794 100 090 Rock



TODD'S COMPLETE EXHAUST

★ ★ ★ ★ ★

"CUSTOMER SERVICE IS OUR GUARANTEE"

503-472-6262

298 SE BOOTH BEND RD.
MCMINNVILLE

HOURS: MON-FRI: 8 - 5:30
OWNER: J TODD KEEVY
FAMILY OWNED & OPERATED SINCE 1989

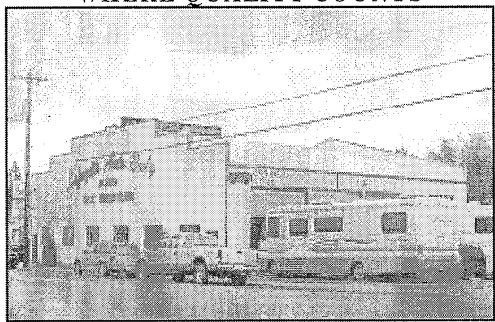
AUTOS • 4x4s • TRUCKS
STOCK & CUSTOM EXHAUST
GEARS: LOCKERS • POSIS
• AXEL SHAFTS • PIPE BENDING
LIFT KITS • WINCHES
DIESEL EXHAUST- 4' & 5' INCH

LAFAYETTE AUTO BODY & RV REPAIR



Complete RV Service & Repair

"WHERE QUALITY COUNTS"



1-800-222-8230

2 LOCATIONS:

204 Third Street
Lafayette, OR 97127
503-864-2344

2225 Cumulus Lane
McMinnville, OR 97128
503-434-6446

WATER LEAK DETECTION & REPAIR

- Mobile Estimating Available
- Computerized Color Matching
- Pick-up & Delivery Available
- Assistance With Insurance Claims
- Spray-in Bedliners
- Towbars, Hitches & Accessories
- Sandblasting & Truck Repair
- Ask About Our Lifetime Guarantee

FACTORY APPROVED WARRANTY CENTER FOR MOST RVS

WWW.LAFAYETTEAUTOBODY.COM • E-MAIL: STEVE@LAFAYETTEAUTOBODY.COM

