

The Tiller



Yamhill County OSU Extension Master Gardener Newsletter

INSIDE THIS ISSUE

- Page 2 From the President
Linda's Corner
Farewell, Bev!

- Page 3 Buggy Bits
Anna Ashby Presentation

- Page 4 OMGA Logo Contest

- Page 5 From the Greenhouse
YCMGA Dues

- Page 6 Golden Trowel Award
More Congrats
Queen Bernice Brown

- Page 7 Call for Volunteers
Editorial Diggings

- Page 8 Committee Clippings
Bare Root Tree Sale

- Page 9 Annual Planning ReCap
YCMGA Board
Educational Gleanings

- Page 10 Plant Profile

- Page 11 Happy Holidays!

Yamhill County Master Gardener™ Association Executive Board

President: Ray VanBlaricom
 Secretary: Doris Cruickshank
 Treasurer: Anna Ashby
 OMGA Rep: Daryll Alt
 OMGA Alt.Rep: Cathy Burdett
 Members at Large:
 Joyce Hammerschmidt
 Kathleen O'Brien-Blair
 Past President: Pam Dowling

Linda R. McMahan, Yamhill County
 Extension Faculty for Community
 Horticulture

This Month's Master Gardener™ Calendar

No Insect Committee Meetings in December!

December 12, Wednesday
 1 pm YCMGA Board meeting followed by a short general membership meeting to elect the 2008 Board and vote on Bylaws. All members encouraged to attend! PW Auditorium

2007 Volunteer Hours are Due!
 Please....the YCMGA needs your support and you deserve credit for all the time you have devoted.

Please turn in your hour sheets to Deb or Linda ASAP



Mark your Calendars!

**Graduation and Awards Night
 Potluck, Friends and Fun
 January 24, Thursday
 5 pm**

December 21, Friday
 Deadline for submissions to the January 2008 Tiller

YCMGA Membership Reminder!

Renew for 2008 and continue to receive the Tiller!
 Give your \$15 check to Deb

**January 10, Thursday
 New 2008 MG Class Begins
 Volunteers needed! See page 7**





From the President *by Ray VanB laricom*



OK ladies and gentlemen, this is the time to impart our “wisdom and skills” to the new class. There are over 20 people prepaid for the 2008 class and six weeks for more to sign up. These eager individuals are well informed as to our public service orientation and the outreach programs we promote. They will be further informed about clinics, and volunteer opportunities as the class progresses throughout the Winter term. YCMGA needs a few more recertified mentors. Think of it this way—if you want to train someone to replace you, the new class is the place to find talent.

December 12th at 2pm we will be voting on new officers and the new bylaws. Many thanks to the committee for spending time getting our organization into full OMGA

compliance. Next year is going to be the easiest year from the President’s perspective as a result of the work that has been done.

My apologies to anyone feeling misled by the Horticultural Pavilion Rehab Project. The overall project is a large group of interested parties including but not limited to: The Fairgrounds Board and Management, YCMGA as represented by me, 4H, Yamhill County Corrections, and a nice list of local businesses and foundations. At the appropriate time all will receive a letter of thanks and gratitude and donors will have their business names engraved on a large cedar sign to be attached to the new building. If anyone has questions about how they can participate please contact me at any time.



Linda’s Corner *by Linda McMahan*



The Holiday Season is always one of my favorite times of year. Not only is there the excitement of visiting family and reconnecting with friends, but it is a time of reflection for the year just passed and making plans for the year to follow.

So this month, my thoughts are turning to our county’s OSU Master Gardener Program in a similar way. We had an abso-

lutely terrific 2007, with so many accomplishments, I find it hard to count them. You as OSU Master Gardeners, often through the YCMGA, have contributed hours of time, dozens of great ideas, and loads of enthusiasm for sharing

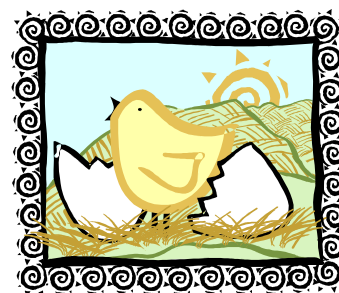
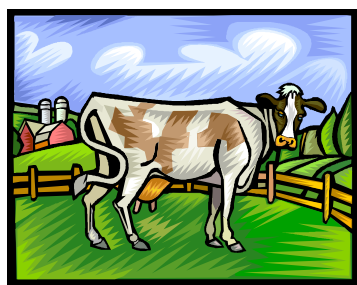
the work we do with our community. You continue to plan for the future in ways that are imaginative, and reflect the continued commitment you have to the program. Perhaps most of all, I appreciate your passion for gardening in all of its forms and your willingness to share that with your colleagues and others.

So, join me in our appreciation event and potluck scheduled for Thursday evening, January 24, 2008. We will recognize special people who excelled in volunteer service in 2007, including those who helped with the training program or provided stellar services to the YCMGA.

Honors will include our graduating class of 2007 and a welcome to the 2008 class trainees. Look for your invitation in the mail soon and plan to come for this annual event.



Farewell, Bev! *by Cathy Burdett*



Beverly Beck-Boersma, the Yamhill County OSU Extension’s Office Manager, has accepted a position at Western Oregon University. Here assistance to YCMGA members has been invaluable. We will miss her!



Winter Wind Down

As the warm weather subsides and winter takes its hold, the number of insect specimens that are submitted by clients has suddenly approached zero. This is normal for this time of year. We do get a few spider specimens that have invaded homes, but even those are seeking shelter to hibernate throughout the cold season.

The Insect Committee had some very full days in October and November, sometimes looking at 10-15 submissions by clients seeking answers to “buggy” questions. One of the more challenging submissions came into the office with a pair of pants stuffed into a plastic ziplock bag. The intake form simply said “please identify”. Well, you can imagine our trepidation about specimens in clothes with no idea of what we would find! We decided to freeze the pants until our next meeting, effectively killing any specimens that were present. After speaking with the client, we discovered that small insects had entered the pants while being stored. After the

freeze we shook the pants into a white plastic bag and found minute specimens (dead, of course) that, when put under the microscope, turned out to be tiny ants. Now, how do you call and tell a client that they have “ants in their pants”??? Especially with a straight face!!

The Insect Committee will take a hiatus from meetings during the holiday seasons and will re-meet in March of ‘08. We certainly appreciate the support that all of you have given to our insect group throughout the year. Your efforts to identify specimens and make recommendations certainly helped us in completing our task of serving our customers. We are hoping to see some experienced MG’s as well as members of the new MG training class interested in joining the Insect Committee next year.

The committee has mulled over the idea of offering an Advanced Insect Identification Training next year in September. This training has not been offered for 2 years, so it is time to do it again. The class consists of two days of training, lab work, and lots of information. We have gotten inquiries from other counties and also from our own MG’s regarding the class and when it will be scheduled again. Watch for announcements during the summer of next year.

We hope you enjoy your holidays and have a safe and prosperous New Year.

Anna Ashby Presentation *by Jake Hurlbert*

Anna Ashby, mother of four, presented herself to the McMinnville Garden club in her formal gardening and pioneer regalia. She spoke on winter gardening. A subject that included a pioneer gardening story, books and helpful hints on winter gardening, and a model demo on how to build a small winter greenhouse. She stressed rotation of crops, how to select plants, and when and where to plant. Anna completed her presentation by giving away plants that the Newberg High students grew as a horticulture project where she is a mentor. Everyone was energized with the confidence that they could be winter gardeners.

For more information about the McMinnville Garden Club, call 503-434-4344.





OMGA Logo Contest

Going Green on Our Silver
2008 OMGA/OSU Extension Mini-College Event
July 23-25, 2008
Corvallis, Oregon

We invite our creative Master Gardeners™ to design a logo that captures the 2008 Mini-College theme of “Going Green On Our Silver”! This event will be a time of celebration, because 2008 is the 25th anniversary of the Oregon Master Gardener Association’s Gardeners Mini-College! This event also presents a wonderful chance to recognize the various activities of local Master Gardener chapters that help to protect our planet and sustain our natural resources.

When is the contest open? The logo contest is open from December 1 to December 31, 2007. The winning design will be announced in January 2008.

How (will the design be used)? The design will be exclusively used for publications and promotions associated with the 2008 Gardeners Mini-College (e.g. registration packet, sponsorship solicitation letters, website, etc.).

What will I receive if I win? The contest winner will receive an OSU T-shirt, a discount coupon towards their Mini-College registration fee, and will be featured on the Mini-College website.

Where should I submit my entry? Please submit image entries to: Tam Martin, tamm@hammondnet.com.

Who should I contact if I have questions? Questions may also be directed to Tam Martin, 2008 Mini-college co-chair, at 503-317-2227 or tamm@hammondnet.com.

All image entries **must** fit the following criteria:

1. Depict a clear and consistent visual identity that strengthens the 2008 theme of ‘Going Green on our Silver’.
2. Be received in electronic format by December 31, 2007.
3. Be able to be reproduced as a black/white, or up to 4 color, logo.
4. Be in JPEG file type.

- No copyrighted images may be used. If photos or original artwork is involved we will need written permission by the image owner to reproduce the design.

- Your design will be judged on creativity, relationship to the theme in an eye-catching way, and how much it is perceived to potentially draw interest to Mini-college.

- Winning artwork will become property of OMGA and will be allowed to be used in print and web for 2008 Mini-college and at our discretion.

- All Master Gardeners™ are encouraged to enter! Family members can also contribute. However, children under age 18 must have a parent or guardian’s permission to enter. Multiple entries are allowed, so please feel free to enter as many times as you like.

- All designs will be judged by the OMGA Board of directors and associates.

*I heard a bird sing
In the dark of December
A magical thing
and sweet to remember*



*‘We are near to Spring
Than we were in September,
I heard a bird sing
In the dark of December.*

Oliver Herford

Last month I was talking about all the rain we had had. The nice sunny fall days seemed few and far between. Since that column and this one we have seen some pretty nice days -- days that have given all of us a chance to get out and put our landscapes to bed for the winter.

I finally got all the annuals pulled up and I have been working at getting the perennials tidied up and cut back for winter. I always enjoy seeing the soil in the flowerbeds again.

This time of year is a good time to move plants around. It still is not too cold and there is a little time for the roots to settle in and get ready for good growth in the spring. This is also a good time to divide some of those plants. I have dug up cannas, hostas, *Crocsmia*, *Schizostylis* (Kaffir Lily), *Dierama* (Angel's Fishing Rod), and *Echinacea*. After dividing them I replanted those pieces that I wanted to keep and took the rest over to my well aged mushroom compost pile. I didn't look forward to potting all the divisions that I had but I did it anyway. All of these pots of plants will go to next spring's plant sale.

(We on the plant committee sure hope you will think of the sale when you are digging dividing your plants. Our need for perennials is huge).

Not only have I moved some perennials around but I also have been editing some of the shrubbery. I took out an arborvitae that was not looking good where I had planted it a few years ago. Have you noticed how nice arborvitae look when they are little but how they can overstay their welcome when they get big?

The arborvitae is now on the burn pile with a huge "dwarf" Alberta spruce. These are the spruce you see at Christmas time in gallon pots as little indoor Christmas trees. They are so cute! I am sure that most of them die from neglect -- lack of water -- but they can be planted in

the yard. They grow very slowly and take a long time to outgrow their spot but with age, this "dwarf" conifer can get 10 ft. tall and quite wide. Mine was crowding a 'Pink Dawn' viburnum and even though I liked the evergreen, I liked seeing the viburnum blooms in the wintertime from my living room windows. Anyway, I have three more of the spruce that haven't yet out grown their spots.

I also dug up three spirea, that I am tired of, and an Exbury azalea (deciduous) I decided that I could live without. Those shrubs will find themselves in the February tree and shrub sale.

I moved a dwarf crape myrtle that didn't seem to like where it was planted. It didn't bloom this fall and I suspect that was my fault. I pruned it for shape last winter and I think I pruned off this years bloom. I sure hope I didn't prune off next year's flowers too!

I plan to move a Japanese dogwood this winter when it is dormant. It is lost between the 'Pink Dawn' viburnum and a fairly tall rhododendron. It was a tree that I bought at

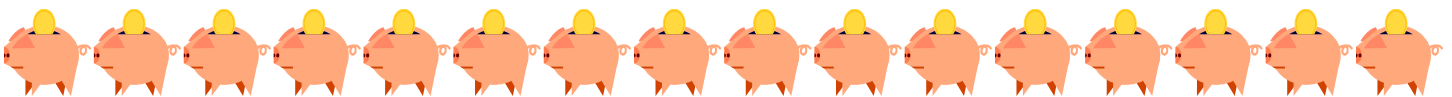
the bare root tree sale a couple of years ago and it is growing very slowly. It bloomed well last spring for the first time. I will move it near our deck and if it reaches the height on the tag -- 20' -30' -- it should provide some shade for the deck and the flowerbed in which it will be planted.

As I look at the yard I still see areas I want to change. They may just have to wait until spring or even next fall. Changing the plantings, adding and subtracting plants keeps gardening interesting for me.

One plant that I don't want to change is the *Callicarpia bodinieri* 'Profusion' Beautyberry, which I can see from the living room window. Its leaves have fallen now and the long-lasting violet berries light up its corner of the border. It too is near an Alberta spruce. Guess which one goes when they crowd each other!



YCMGA Membership Dues



The YCMGA Executive Board has voted to increase membership dues by \$5.00. The due increase is to offset some of the costs involved in funding new outreach programs. The \$15.00 yearly YCMGA dues are due in January. \$5.00 is forwarded to the OMGA and the remaining \$10.00 is retained for YCMGA's projects and activities.





Steven Klass

- 📖 2007 YCMGA Class member
- 📖 Since March 2007, has submitted high quality pictures that are published in the Tiller newsletter
- 📖 The Tiller is sent by mail and email to YCMGA members
- 📖 The Tiller is also accessed by the public via the OSU Master Gardener webpage
- 📖 Steven is the 2007 and 2008 Chair of the Photography Committee

*Congratulations, Steven.
Your artistry is greatly valued by the YCMGA.*

More Congratulations

Congratulations to Daryll Alt, who has accepted the OMGA nomination as **2nd Vice President**.
 Also, Cathy Burdett has been appointed by OMGA to chair the **OSU/OMGA Education Committee**.
 YCMGA is well represented on the OMGA Executive Board.



Queen Bernice Brown by Cathy Burdett

Our own Bernice was “Queen” of the McMinnville Garden Club entry in the downtown McMinnville annual “Santa Claus” parade. Her Royal Majesty was regally attired and looked every inch a queen.
 Queen Bernice Brown is a faithful member of the McMinnville Garden Club, a Yamhill County Master Gardener who is a “perennial expert” and was the first recipient of the YCMGA’s Golden Trowel Award.

Hail Queen Bernice!

Photo by Pam Dowling

Call for Volunteers to help with the 2008 MG Class



The YCMGA Mentoring Committee is looking for more enthusiastic Master Gardeners to help with the 2008 Master Gardener Class (classes begin on Thursday, January 10th). Polly Blum and Alan Wenner are the coordinators for the committee. A training session for all interested MGs will be held on Thursday, January 3rd, at 10 am in the Extension auditorium. To serve as a mentor, you need to be a certified Master Gardener (or expect to be re-certified this year), but you do not need to have prior mentoring experience.

Mentors must be available from 8:30 to 9:30 am on Thursday mornings from January 10 through March 20.

If you are interested in this challenge and opportunity, please contact Polly (503-864-8179) or Alan (503-435-1131) or come to the January 3rd meeting.

Present Mentor volunteers include:

Ray VanBlaricom

Pam Dowling

Polly Blum

Jane Price-Hensley

Cathy Burdett

Kathleen Bennett

Sharon Gunter

Alan Wenner

Editorial Diggings *by Cathy Burdett*

The following information was compiled by Jan McNeilan (OSU Urban and Community Horticulture staff).

In 2006, there were 3206 active Master Gardeners who donated 148,925 hours to the program, resulting in approximately 72 FTE's for OSU Extension. This translates into a dollar value of approximately \$2,397,692. In comparison of past years statistics, these numbers are a significant increase in the past 5 years with an increase of 8 FTE, and \$276,904 in kind value to the university. The OSU Master Gardener program continues to be a vital part of many counties throughout Oregon. It is a great example of how to fulfill the educational outreach mission of the OSU Extension Service.

The Master Gardener program is active in 49 states. Some of the programs that are completed by Oregon Master Gardeners are used as models for chapters in the other states.

A statewide survey was conducted of active Master Gardeners to discover their perceptions of the Master Gardener program and what they learned as a result of completing the training. As an example, of the individuals who completed the MG program, 95% responded that they had significantly improved their horticultural knowledge level and 92% noted they had significantly improved their horticulture skill level. These skills were then passed on to other individuals through the over 159,250 contacts that the MG's made with Oregonians seeking answers to their gardening questions. These contacts come in a variety of formats and include the educational classes offered to the general public.

There is an active Master Gardener program in four Canadian provinces. Some of the programs that are completed by Oregon Master Gardeners are used as models for the Canadian Master Gardener program.

The number of volunteers in Oregon's Master Gardener Program continues to grow. Statistics vary between counties, but the averages are as follows: 70-75% women, 25-30% men. The average age is: 12% over 65, 49% 41-64, 23% 26-40 and 16% under 25. Currently, a larger number of Oregon MGs are working either part- or full-time than are retired. All of our volunteers bring a variety of skills, talents, ideas and energy, to the program as they further their own skills and help others. The length of training varies depending on the needs of each county. After completing the 5-12 week training period, the volunteers are much more aware of Oregon State University, its Extension Service, the College of Agricultural Sciences, and how they all tie together to provide extended education to the citizens of Oregon. Very little advertising is necessary to attract new applicants each year, in fact most counties where the program is ongoing, have a waiting list for next years' classes before they begin.



A thank you to YCMGA members who has accepted positions of leadership as Committee Chairs and Co-Chairs for 2008.

If you are not yet actively engaged in YCMGA projects and activities, this would be an ideal opportunity to join a committee...have fun...and develop some friendships.

2008 YCMGA Committees

Committee	Chair/Co-Chair
Appreciation Luncheon	Alan Wenner/Pam Dowling
Tree & Shrub Sale	Alan Wenner/Pam Dowling
Volunteer Coordination	Patti Gregory—Clinics
	Bev & Dave Norman—
	Community Garden
	Anna Ashby—Education
	Mary Hultgren
Daffodil Festival	Gail Price/Sylvia Connor
Greenhouse & Demo Garden	Joyce Hammerschmith
Historian	Aileen Bono-Smith (tentative)
Hospitality for 2008 Class	**Contact Ray if interested**
Social Events (year long)	Bob Grossmann
Insect	Beth Durr
Library	Ray VanBlaricom
Plant Sale	Alan Wenner/Polly Blum
Mentors	Cathy Burdett/Kathleen Bennett
Mini College Display	Susan Williams
Native Plant Garden	Steven Klass/Joyce Hammerschmith
Photography	Gail Price
Scholarship	Cathy Burdett
Tiller Editor	Alan Wenner/Ray VanBlaricom
Publicity	Jane Price-Hensley/Marian Vale
Calendar of Events	

The Bare Root Tree Sale has Changed!

This year, our February fund-raiser sale, previously known as the Bare Root Tree Sale, will become the **“Tree and Shrub Sale.”** Our offerings will expand beyond bare root trees to include potted trees and shrubs. Another change will be in the scheduling. Instead of holding the sale over two consecutive weekends, the sale will now take place as a **“3-Day Weekend”**. The dates and times for 2008 will be:

- Friday, February 29 9 am—3 pm
- Saturday, March 1 9 am—3 pm
- Sunday, March 2 9 am—3 pm

100% of the net proceeds from this sale go to the YCMGA College Scholarship Fund for Yamhill County residents attending Oregon schools and majoring in any of several Agricultural related disciplines.

If you would like to help out with this sale, please contact Alan Wenner or Pam Dowling. Volunteers will be rewarded with a chance to shop early at the sale.

This is a recap of the highlights of the YCMGA annual planning session held November 3rd, 2007, from 9 am—2 pm at the First Federal Savings conference room in McMinnville.

- ✓ YCMGA Board members and interested members attended
- ✓ Formulated a 2008 budget to be submitted to the membership
- ✓ Proposed candidates for the 2008 YCMGA Board (see below)
- ✓ Suggested many potential plans and activities for 2008
- ✓ Reviewed successful projects and increased financial support to community activities
- ✓ Submitted potential Committee Chairs and Co-Chairs for 2008 (see page 8)
- ✓ Discussed options for training
- ✓ Presented updated information related to the fairgrounds Horticultural Pavilion renovation
- ✓ Continued on-going support:
 - ◆ Community Garden at the Salvation Army site
 - ◆ Newberg High School and City of Newberg
 - ◆ Community Clinics in Yamhill County
 - ◆ Carlton Grade School
 - ◆ Educational Projects

Candidates for the YCMGA Executive Board by Cathy Burdett

The YCMGA nominating committee has submitted to the YCMGA Executive Board the following candidates for consideration, however, there is still time to submit nominations before the vote of the general membership on December 12th (after the 1 pm Board Meeting in the Public Works Auditorium).

Candidates for the 2008 Executive Board



President
Vice President
Secretary
Treasurer
OMGA Rep.
Alt. OMGA Rep.
Member-at-Large
Member-at-Large

Ray VanBlaricom
Alan Wenner
Pam Dowling
Anna Ashby
Cathy Burdett
Kathleen Bennett
David Norman
Al Hanks



Educational Gleanings

WHAT HAPPENS TO YOUR GRASS IN THE WINTER?

Tom Cook, OSU Extension turf grass specialist, offers strategies to minimize cold injuries in your lawn.

http://extension.oregonstate.edu/news/story.php?S_No=1009&storyType=garden

FREEZING WEATHER TAKES TOLL ON LANDSCAPE PLANTS

Large temperature fluctuations between warm and cold may damage plants more than long periods of consistent cold, explains an OSU Extension horticulturist.

http://extension.oregonstate.edu/news/story.php?S_No=860&storyType=garden

FEEDING WILD BIRDS IMPORTANT IN COLD SEASON

After snowfall, wild birds need supplemental food more than ever. Here are some hints from an OSU wildlife biologist on the kinds of food that do birds the most good.

http://extension.oregonstate.edu/news/story.php?S_No=618&storyType=garden

GIFT SUGGESTIONS FOR THE GARDENER IN YOUR LIFE

http://extension.oregonstate.edu/news/story.php?S_No=1012&storyType=garden

Parsley, Sage, Rosemary and Thyme

So of these famous herbs from a popular song (Simon & Garfunkel, *Scarborough Fair*, 1966, just in case you don't recall), only parsley does not qualify as WaterWise. The other three—sage, rosemary, thyme—in addition to many other herbs are more additions to the WaterWise plant palette for much of Oregon. Their forms are varied, from upright, robust forms popular for culinary use, to prostrate, carpet, and other forms favored for ornamental use. All will help make a fine stew, but the cultivars are highly ornamental additions to edible landscapes as well as garden features in their own right.

First, sage. The website at <http://wordnet.princeton.edu/perl/webwn> defines sage in several ways. The first is “a mentor in spiritual and philosophical topics who is renowned for profound wisdom.” Indeed someone with this kind of experience could be helpful in our gardening practices. However, perhaps the more relevant definition is “any of various plants of the genus *Salvia*; a cosmopolitan herb.” The herbal species, *Salvia*, is native to the Mediterranean and has grayish-green leaves. This color is due to whitish hairs on the green leaves. The hairs and the resulting lighter color help reflect light and keep the plant cool in its native environment. The flowers are an attractive bluish purple on short spikes. The genus is quite large, as many as 900 species. Even of the culinary type, many different cultivars add to garden interest, including the tricolor sage (green, yellow, and white), ‘Purpurascens’ with purple leaves, and ‘Alba’ with white flowers (<http://en.wikipedia.org/wiki/Salvia>).

Rosemary, *Rosmarinus officinalis*, is evergreen with dark green, needle-like leaves, and a strong aromatic fragrance. Although rosemary can survive many years in the ground and can be pruned to manage its size, it is perhaps best kept in a pot so it can be brought inside during the coldest part of the winter. The flowers are a medium blue (or pink or white), but unlike sage, these flowers appear

along the entire stem at intervals. Many cultivars of rosemary are available, popular ones being prostrate rather than upright. For more information about cultivars and growing conditions, visit <http://extension.uidaho.edu/idahogardens/tsv/pdfs/Rosemary.pdf>.

Then there is thyme—so many kinds with so many uses. The culinary type or common thyme is *Thymus vulgaris*, native to the Mediterranean. According to the online encyclopedia Wikipedia, this is not the only one used for cooking, <http://en.wikipedia.org/wiki/Thyme>. Others are especially popular for landscaping are the creeping kind, including wooly thyme (*Thymus praecox* ssp. *arcticus* 'Lanuginosus') and creeping thyme (*Thymus serpyllum*). Find out more about the 400 or more species at <http://www.ipm.iastate.edu/ipm/hortnews/1997/4-4-1997/thyme.html>.



This photo is available at : http://en.wikipedia.org/wiki/Image:Salvia_officinalis0.jpg and is freely licensed.

The gardening season officially begins on January 1st and ends on December 31st.

Marie Huston

In drear-nighted December, Too happy, happy tree, Thy branches ne'er remember Their green felicity.

John Keats





*Wishing Everyone
the
Season's Best!*

OSU Yamhill County Extension Office
2050 Lafayette Avenue
McMinnville, OR 97128-9333

From December to March, there are for many of us three gardens—the garden outdoors, the garden of pots and bowls in the house, and the garden of the mind's eye.
Katherine S. White

Yamhill County OSU Extension Office
2050 Lafayette Avenue
McMinnville, OR 97128-9333
Phone: 503-434-7517
Email: yamhillmg@oregonstate.edu

We're on the Web!
<http://extension.oregonstate.edu/yamhill>

THE TILLER

The *Tiller* is published monthly by the Yamhill County OSU Extension Office in cooperation with the Yamhill County Master Gardener™ Association, 2050 Lafayette Avenue, McMinnville, OR 97128-9333. (503) 434-7517. For free subscription by email, send request to: yamhillmg@oregonstate.edu

General meetings of the Yamhill County Master Gardeners™ Association are announced in the *Tiller* and open to the public.

OSU Master Gardener™ Program Director: Linda R. McMahan, Ph.D.
Tiller Editor: Cathy Burdett
Contributors: Ray VanBlaricom, Linda McMahan, Bob Grossmann, Jake Hurlbert, Gail Price, Cathy Burdett, Pam Dowling, Alan Wenner



YAMHILL COUNTY MASTER GARDENERä ASSOCIATION
CONSTITUTION AND BYLAWS

New Material in Blue Italic Tahoma font Deletions in Red Arial font

ARTICLE I. NAME

The name of the organization shall be: Yamhill County Master Gardenerä Association. It shall be an official chapter of the *Oregon Master Gardenerä Association of the State of Oregon* (OMGA), a not for-profit organization.

ARTICLE II. PURPOSES

The purposes of the association shall be:

- a) To promote, assist and supplement the Oregon State University Extension Service Master Gardenerä program through continuing education.
- b) To assume responsibility for performing special tasks related to the program. These may include, but not limited to, home gardening “clinics” or assisting at state or local fairs.
- c) To promote and disseminate gardening information to the community.
- d) To engage in other activities related to gardening that are consistent with the Constitution and Bylaws of the association and the goals and policies of the Oregon State University Master Gardenerä Program.
- e) *To use designated funds for the purpose of awarding college level scholarships to selected students:*
 - 1. Students will be graduates of Yamhill County High Schools or home schooled in Yamhill County.*
 - 2. Students will be majoring in subjects determined by the Executive Board.*
 - 3. Students will be attending Oregon colleges, universities or trade schools.*
 - 4. The amount and number of scholarships will be determined by the Executive Board.*

ARTICLE III. TYPE OF ORGANIZATION

Section A: This is a not-for-profit organization. It shall be supported by dues, donations and fund-raising activities as may be adopted by a majority of the membership present at a regular or special meeting.

Section B: This association shall maintain an affiliation and coordination with the Yamhill County Office of the Oregon State University Extension Service.

ARTICLE IV. MEMBERSHIP

Section A: Regular Member: Regular membership is open to all persons who have successfully completed the Oregon State University Master Gardenerä training program *and remain in good standing with OSU MG program*; including those persons actively engaged in payback time. The Yamhill County Oregon State University Extension Consumer Horticultural Agent shall be a regular member but shall not pay dues, vote, or hold office.

Section B: Honorary Member: Honorary membership may be awarded to any outstanding horticulturist by a majority vote of the membership at any regular meeting. They shall not pay dues, vote, or hold office.

Section C: Lifetime Member: Regular members who have achieved 1000 volunteer hours, or are the recipient of the Yamhill County Master Gardenerä of the Year Award shall be granted lifetime membership. They may vote and hold office but shall not pay dues.

Section D: Only regular members in good standing, whose dues are current, may vote and hold office.

Section E. Termination of Membership.

Membership may be terminated by the Executive Board if:

- (a) 15 Days written notice is given to the member to be terminated, by regular mail or email.*
- (b) Member must be provided an opportunity to be heard by the Board, orally or in writing and not less than 5 days before the effective date of the termination.*
- (c) The reason(s) for the termination must be stated in the letter of termination.*
- (d) The decision of the Board shall be final and shall not be reviewable by any court.*

ARTICLE V. DUES

Section A: Annual membership dues shall be set at the October Board meeting. Dues shall be payable prior to March first. Membership dues must include the annual membership dues of the Oregon Master Gardenerä Association. Fiscal year will be the same as the Oregon Master Gardenerä Association, January 1 to December 31.

OMGA dues are to be paid to the OMGA Treasurer by April 1.

ARTICLE VI. ORGANIZATION AND OFFICERS

Section A: The officers of the chapter shall be:

President

Vice President

Secretary

Treasurer

Representative to the Oregon Master Gardenerä Association

Alternate to the Oregon Master Gardenerä Association

2 Members –at-Large

In addition to the above eight elected officers, the immediate past President and/or Treasurer will assume non-elected Board positions for a one-year period immediately following their term of office. These elected and non-elected officers shall serve as the Executive Board, the governing board of the association.

Section B: The term of office shall be for one year. Any officer may be re-elected to the same or any other office.

Section C: An executive board quorum shall consist of five members. In the event less than a quorum is present at the meeting, the meeting will be conducted, however a poll of the full board membership must be taken and a majority approval obtained before the final adoption of any decisions or motions.

Section D: All officers shall serve without pay, but may have actual out-of-pocket expenses reimbursed if approved by a majority of the Executive Board.

Section E: Duties of Officers:

1. President: The President shall preside at meetings, arrange for the annual financial review, appoint committees, and direct the activities of the association.

2. Vice President: The Vice President shall know and assume the duties of the President in his/her absence, and serve as the program chairperson and handle the speaker gratuities.

3. Secretary: The Secretary shall keep minutes of all Board and General meetings, prepare correspondence and perform other appropriate duties as may be assigned by the President.

4. Treasurer: The Treasurer shall keep financial records, receive and disburse funds, and prepare the annual budget as directed by the Executive Board. A Treasurer's report will be furnished to the Board and the membership. The Treasurer may serve without bond. The financial records shall be reviewed annually or if there is a change of Treasurer.

5. OMGA Representative and Alternate: The OMGA Representative and Alternate shall represent this association and act as liaison to that organization and report activities of interest to the board & general membership.

6. Members-At-Large: The two Members-At-Large shall serve as advisors to the Executive Board and perform other duties as may be assigned by the President.

Section F: Election of Officers:

1. The President shall appoint a nominating committee of at least three regular members at the September Board meeting. The members of the nominating committee will be published in the monthly newsletter. Any regular member may submit a nomination to the committee. The committee shall submit a slate of prospective officers for the following year at the November retreat. Nominations will be accepted from regular members at this retreat and the December membership meeting for inclusion on the slate of prospective officers.

2. Officers shall be elected by the regular members at each December membership meeting to serve for a term of one year. Installation of the officers shall take place at the January membership or Board meeting.

Section G: Any resignation by an elected officer shall be submitted in writing to the President. (Revised)

1. The President shall fill such vacancies through appointment.

2. The Board positions of the past President and /or Treasurer will not be filled by appointment.

3. Should the President resign, he/she will appoint the new President prior to the effective date of the resignation.

Section H: The Executive Board of Yamhill County Master Gardenerä Association shall meet monthly separate from regular membership meetings for the purpose of discussing chapter business.

Section I: The person responsible for the Master Gardenerä Program at the Yamhill County Office of the Oregon State University Extension Service shall sit on the Executive Board as a non-voting advisory member.

Section J: A representative of the current Master Gardener training class shall be selected to sit on the Executive Board as a non-voting member. The tenure shall last until the next training class forms and a new member is selected.

Section K. Removal. *An officer may be removed, with cause, by a vote of ¾'s of the total Executive Board members.*

ARTICLE VII. MEETING

Section A: The Executive Board shall schedule **regular** membership meeting dates *and publish these dates in the Tiller or notify all members by email or regular mail.*

Section B: Special meetings of the membership may be called with written notice *by email or regular mail* to the membership at least ten days prior to the meeting date. Special meetings require a majority vote of the Executive Board.

Section C: An annual planning retreat will be held each November. The purpose of this retreat will be to develop goals and projects for the coming year. A preliminary budget will be developed and the Treasurer will prepare a draft of the proposal for presentation to the regular members at the December meeting. The Executive Board at their December meeting will complete final action and adoption of the annual budget.

Section D: A quorum at a membership meeting shall consist of TEN voting members.

Section E: Roberts Rules of Order (latest revised edition) shall govern the conduct of all meetings.

ARTICLE VIII. COMMUNICATION

Section A: A monthly newsletter (THE TILLER) shall be published in co-operation with the Yamhill County Extension Office. It shall be sent to all members *by regular mail or email* and may also be available on the Internet. The general public may also request copies through the Extension Office.

ARTICLE IX. ADDRESS

The address for the chapter shall be:
Yamhill County Master Gardener™ Association
2050 Lafayette Avenue
McMinnville, OR 97128-9333

yamhillmq@oregonstate.edu

Or, The Yamhill County Oregon State University Extension Office current address

ARTICLE X. AMENDMENT

The Constitution and Bylaws may be amended by a two-thirds vote of the Members present at a regularly *or specially* scheduled membership meeting, provided a quorum of 10 voting members is present.

(a) Amendments must be published in the Tiller 3 times prior to voting.

(b) Robert's Rules of Order (current edition) will be used as the official guide for making changes. http://www.rulesonline.com/start.html#rror_02.htm