

Level 4 Collar

Materials Needed: Fusible interfacing, fabric

1. Choose Fabric
2. Layout pattern on interfacing and cut
3. Layout pattern on fabric and cut
4. Cut $\frac{1}{4}$ " off edges of interfacing all around the collar
5. Using dry heat (no steam), fuse interfacing onto backside of one collar piece.
6. Put right sides of the collar together, matching notches. Sew a $\frac{5}{8}$ " seam around three sides of the collar, leaving the side with notches open. Grade and notch the seam in the appropriate places. (Show the judge)
7. Press (dry heat) the collar and turn right side out. Press (dry heat) again. Baste the open edge closed. Top stitch along the edge of the other three sides.

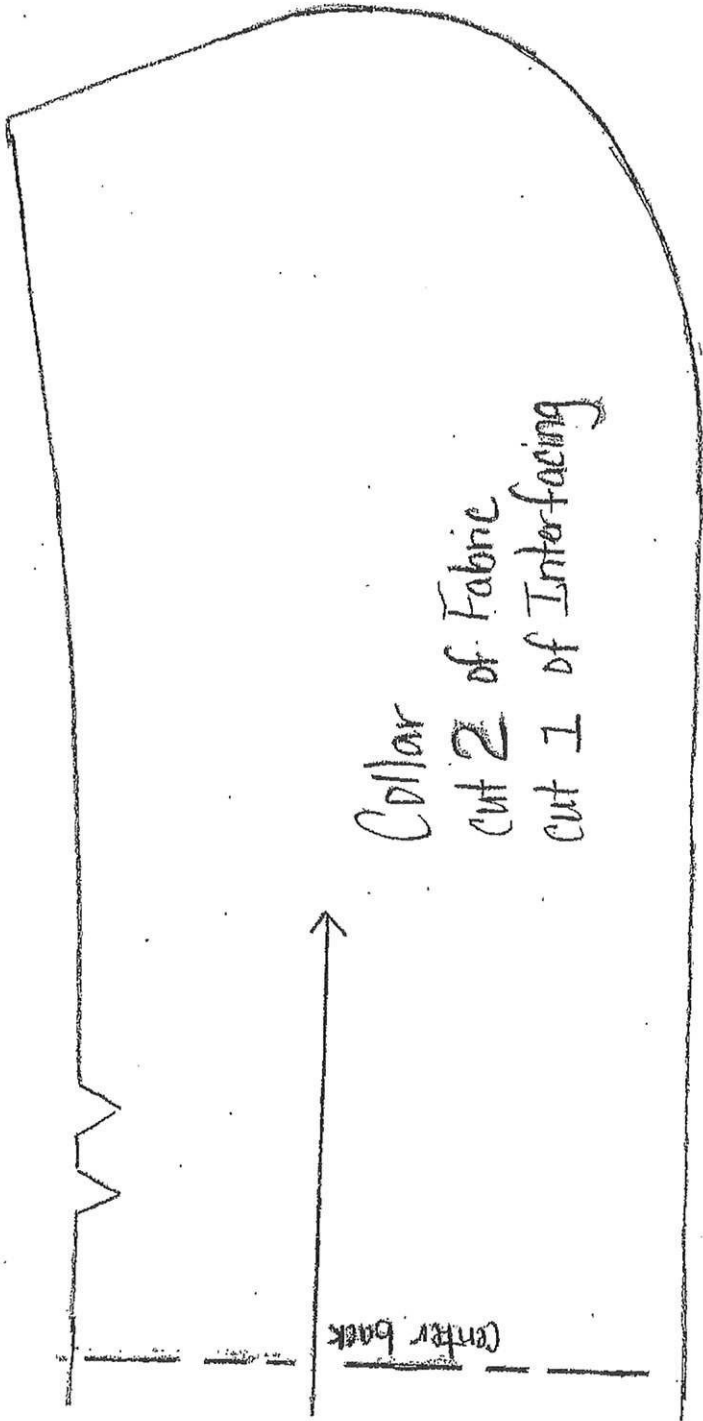
6



7



Tape pattern
together at
center back



Collar
cut 2 of Fabric
cut 1 of Interfacing

